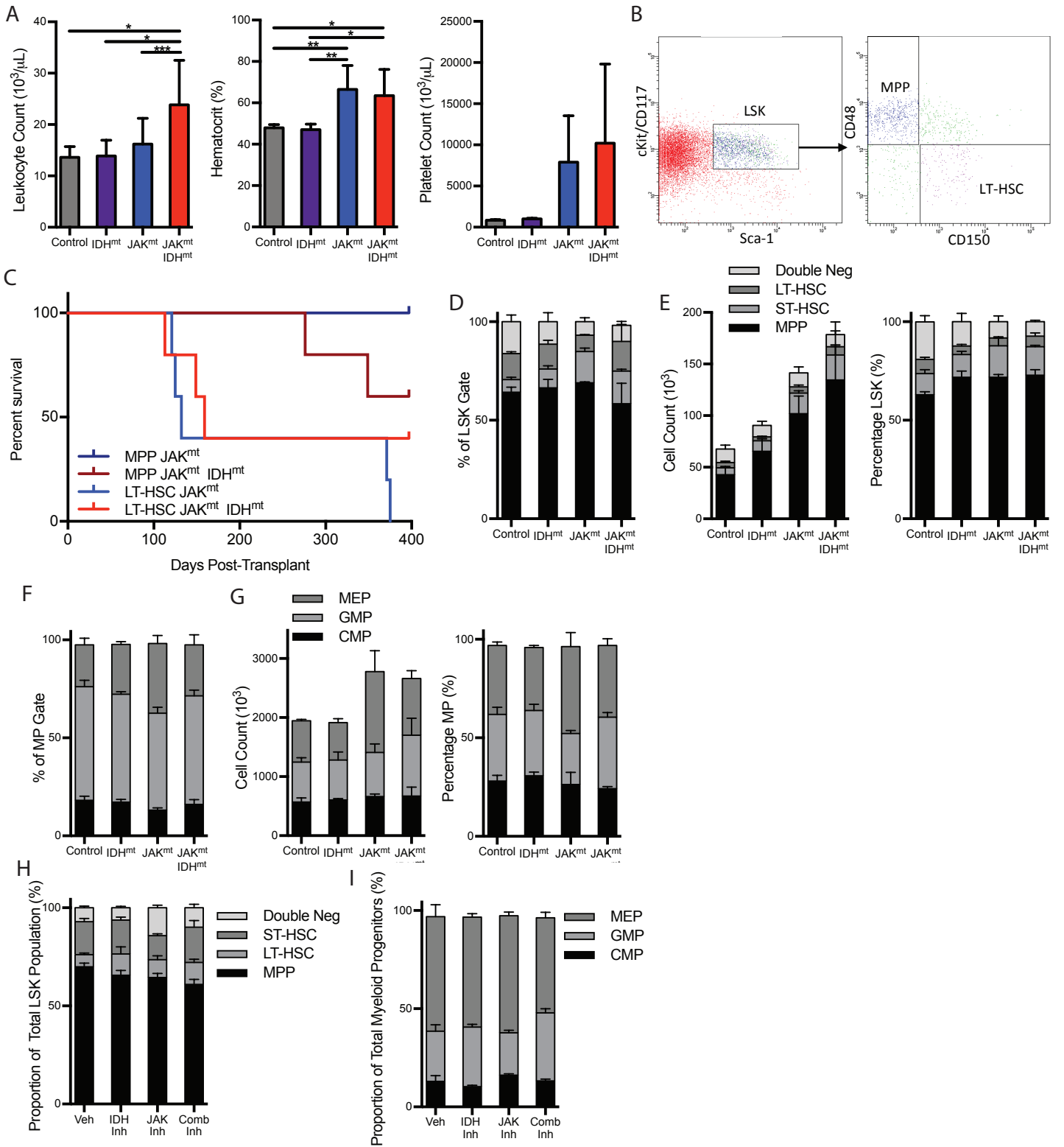


Supplementary Materials:



Supplemental Figure 1: Combined mutant mouse phenotype **A**, Peripheral blood leukocyte counts and hematocrit from recipients of competitive transplants 12 weeks post-transplant. **B**, Representative image of gates used to sort SK populations for injection into recipients. **C**, Survival curve of mice injected with different LSK populations **D**, LSK populations in primary *Idh2*^{R140Q} *Jak2*^{V617F} mice represented as proportions of total LSK. **E**, LSK populations in primary *IDH1*^{R140Q} *Jak2*^{V617F} mice represented as totals and proportions of total LSK. **F**, Myeloprogenitor populations in primary *Idh2*^{R140Q} *Jak2*^{V617F} mice represented as proportions of total LSK. **G**, Myeloprogenitor populations in primary *IDH1*^{R140Q} *Jak2*^{V617F} mice represented as totals and proportions of total LSK. **H**, LSK, and **I**, Myeloprogenitor compartments expressed as proportions of subcompartments in *Idh2*^{R140Q} *Jak2*^{V617F} bone marrow recipients treated with targeted inhibitors. *P<0.05, **P<0.01, ***P<0.001, ****P<0.0001.