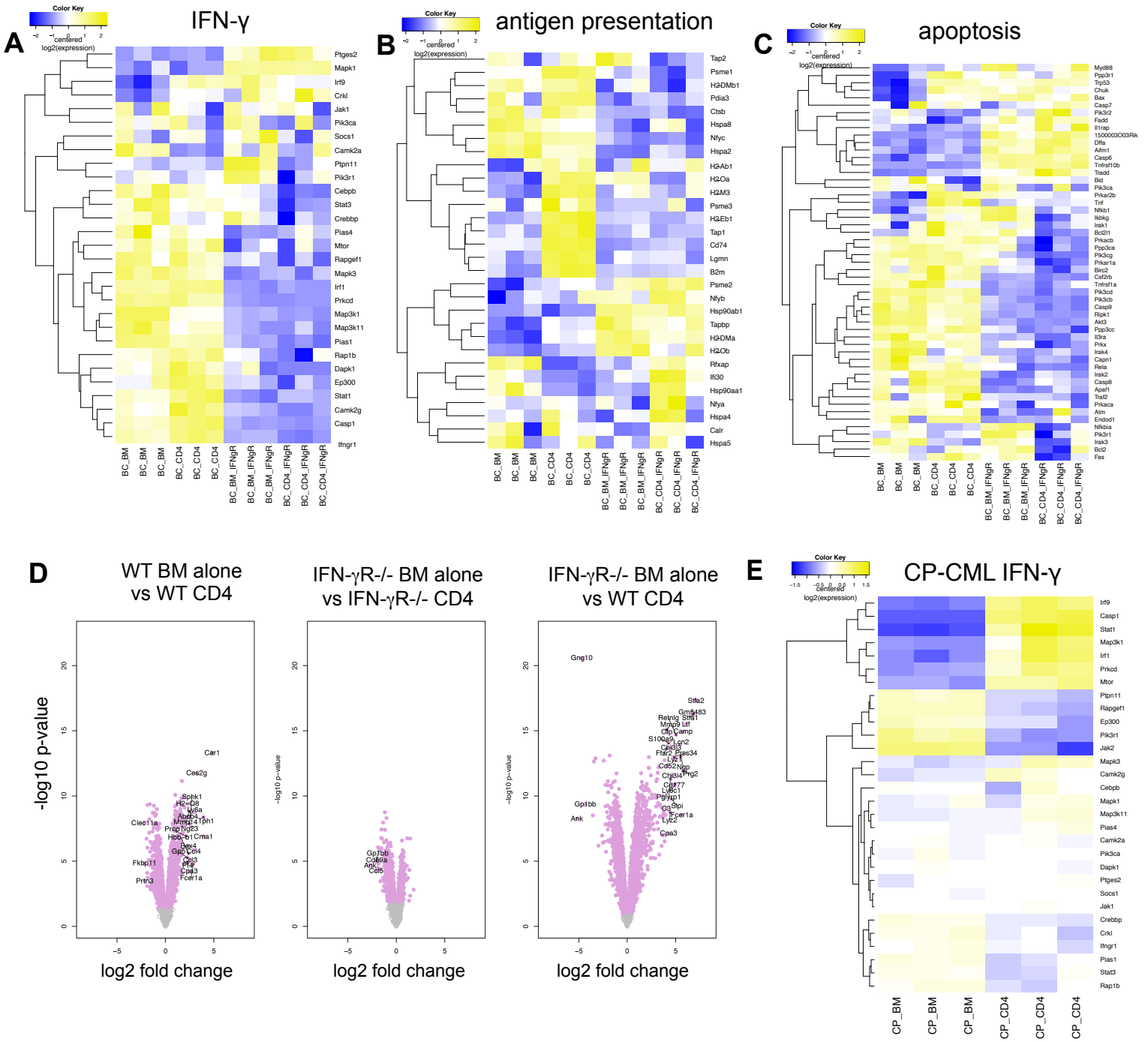


# Supplemental Figure 1



**Supplemental Figure 1. Heat map and volcano plot analyses of gene expression in wt and IFN- $\gamma$ R<sup>-/-</sup> mBC-CML and wt CP-CML LSCs harvested from mice with and without an ongoing GVH response.** (A-C) Heat maps of gene expression in IFN- $\gamma$  (A), antigen presentation (B) and apoptosis (C) pathways from KEGG. Volcano plots comparing gene expression of key mBC-CML groups (D). Hallmark IFN- $\gamma$  pathway heat maps for mCP-CML LSCs from mice that received no T cells or CD4 cells. For heat maps, each column represents analysis of LSCs harvested from a single mouse.