

Transcription factor ICBP90 regulates the *MIF* promoter and immune susceptibility locus

Jie Yao, ... , Patty Lee, Richard Bucala

J Clin Invest. 2016;126(2):732-744. <https://doi.org/10.1172/JCI81937>.

Research Article

Immunology

The immunoregulatory cytokine macrophage migration inhibitory factor (MIF) is encoded in a functionally polymorphic locus that is linked to the susceptibility of autoimmune and infectious diseases. The *MIF* promoter contains a 4-nucleotide microsatellite polymorphism (–794 CATT) that repeats 5 to 8 times in the locus, with greater numbers of repeats associated with higher mRNA levels. Because there is no information about the transcriptional regulation of these common alleles, we used oligonucleotide affinity chromatography and liquid chromatography–mass spectrometry to identify nuclear proteins that interact with the –794 CATT_{5–8} site. An analysis of monocyte nuclear lysates revealed that the transcription factor ICBP90 (also known as UHRF1) is the major protein interacting with the *MIF* microsatellite. We found that ICBP90 is essential for *MIF* transcription from monocytes/macrophages, B and T lymphocytes, and synovial fibroblasts, and TLR-induced *MIF* transcription is regulated in an ICBP90- and –794 CATT_{5–8} length–dependent manner. Whole-genome transcription analysis of ICBP90 shRNA–treated rheumatoid synoviocytes uncovered a subset of proinflammatory and immune response genes that overlapped with those regulated by MIF shRNA. In addition, the expression levels of ICBP90 and MIF were correlated in joint synovia from patients with rheumatoid arthritis. These findings identify ICBP90 as a key regulator of *MIF* transcription and provide functional insight into the regulation of the polymorphic *MIF* locus.

Find the latest version:

<https://jci.me/81937/pdf>



Transcription factor ICBP90 regulates the *MIF* promoter and immune susceptibility locus

Jie Yao,^{1,2} Lin Leng,¹ Maor Sauler,¹ Weiling Fu,² Junsong Zheng,² Yi Zhang,¹ Xin Du,¹ Xiaoqing Yu,³ Patty Lee,¹ and Richard Bucala¹

¹Departments of Medicine and Pathology, Yale University School of Medicine, New Haven, Connecticut, USA. ²Department of Laboratory Medicine, Southwest Hospital, Third Military Medical University, Chongqing, China. ³Yale School of Public Health, New Haven, Connecticut, USA.

The immunoregulatory cytokine macrophage migration inhibitory factor (MIF) is encoded in a functionally polymorphic locus that is linked to the susceptibility of autoimmune and infectious diseases. The *MIF* promoter contains a 4-nucleotide microsatellite polymorphism (–794 CATT) that repeats 5 to 8 times in the locus, with greater numbers of repeats associated with higher mRNA levels. Because there is no information about the transcriptional regulation of these common alleles, we used oligonucleotide affinity chromatography and liquid chromatography–mass spectrometry to identify nuclear proteins that interact with the –794 CATT_{5–8} site. An analysis of monocyte nuclear lysates revealed that the transcription factor ICBP90 (also known as UHRF1) is the major protein interacting with the *MIF* microsatellite. We found that ICBP90 is essential for *MIF* transcription from monocytes/macrophages, B and T lymphocytes, and synovial fibroblasts, and TLR-induced *MIF* transcription is regulated in an ICBP90- and –794 CATT_{5–8} length-dependent manner. Whole-genome transcription analysis of ICBP90 shRNA-treated rheumatoid synoviocytes uncovered a subset of proinflammatory and immune response genes that overlapped with those regulated by MIF shRNA. In addition, the expression levels of ICBP90 and MIF were correlated in joint synovia from patients with rheumatoid arthritis. These findings identify ICBP90 as a key regulator of *MIF* transcription and provide functional insight into the regulation of the polymorphic *MIF* locus.

Introduction

Macrophage migration inhibitory factor (MIF) is an upstream immunoregulatory cytokine that contributes to the pathogenesis of autoimmunity, infectious diseases, and cancer (1, 2). MIF counterregulates the immunosuppressive action of glucocorticoids and promotes the survival of different cell types by inhibiting activation-induced apoptosis (3, 4). In the case of macrophages, autocrine/paracrine MIF release sustains high expression levels of microbial pattern recognition receptors, innate cytokines, and prostaglandins (4, 5). MIF signal transduction is initiated by its engagement of CD74, which is the ligand-binding component of the MIF receptor complex, leading to phosphorylation of the CD74 intracellular domain, recruitment of the CD44 signal-transducing protein, and activation of Src family kinases (6, 7). In addition, MIF interacts with CXCR2/4, which accounts for its eponymic “arrest” function on mononuclear cells (8).

Human genetic studies have identified a 4-nucleotide microsatellite (CATT) in the *MIF* promoter that is present in 5 to 8 copies (–794 CATT_{5–8}; rs5844572) (Figure 1A). Functional studies indicate that CATT repeat number is associated with inducible *MIF* expression such that the CATT₅ repeat is a low expression allele and the CATT₆, CATT₇, and CATT₈ repeats are progressively higher expression alleles (9). These promoter variants occur commonly in the population (minor allele frequency >5%), and higher CATT number is linked to the susceptibility or the clinical severity of autoimmune inflammatory disease (10–12).

Infectious, oncogenic, and neurodevelopmental disorders with an inflammatory pathogenesis also have been associated with the *MIF* microsatellite, with odds ratios as high as 2.7 for meningococcal sepsis and 9.7 for metastatic prostate cancer (13–15). MIF’s upstream role in the host response is supported by studies of *Mif*-deficient mice, which are protected from the inflammatory sequelae of different infections or autoimmunity and show reduced tumorigenesis (16–18). These human genetic and experimental findings have prompted the recent clinical testing of anti-MIF, with the objective that therapeutic intervention may be guided by an individual’s *MIF* genotype (19).

There is ample evidence that the *MIF* –794 CATT_{5–8} promoter microsatellite regulates transcription based on gene expression studies and on plasma MIF levels in genotyped individuals with rheumatoid arthritis (10), systemic lupus erythematosus (12), and sepsis (13). To date, however, there is scant information about the molecular regulation of this site under either physiologic or pathologic circumstances. Promoter analysis software predicts the *MIF* –794 CATT_{5–8} sequence to interact with the transcription factor, Pit-1, which activates pituitary hormone genes (20). Evidence that Pit-1 may regulate *MIF* expression is suggested by the initial cloning of murine MIF from pituitary cells (21), which secrete it in response to corticotropin-releasing factor (22), and by the diurnal variation in circulating MIF levels, which are influenced by neuroendocrine stress (23). Among the transcriptional elements that have been studied experimentally are promoter sites for the transcription factors Sp1 and AP-1 and those responsive to cAMP and hypoxia-inducible factor-1 α (24, 25). The permissive effect of glucocorticoids on *MIF* transcription in human T cells also has been mapped to the GRE and ATF/CRE transcription factor-binding sites (26).

Conflict of interest: The authors have declared that no conflict of interest exists.

Submitted: March 23, 2015; **Accepted:** November 18, 2015.

Reference information: *J Clin Invest.* 2016;126(2):732–744. doi:10.1172/JCI81937.

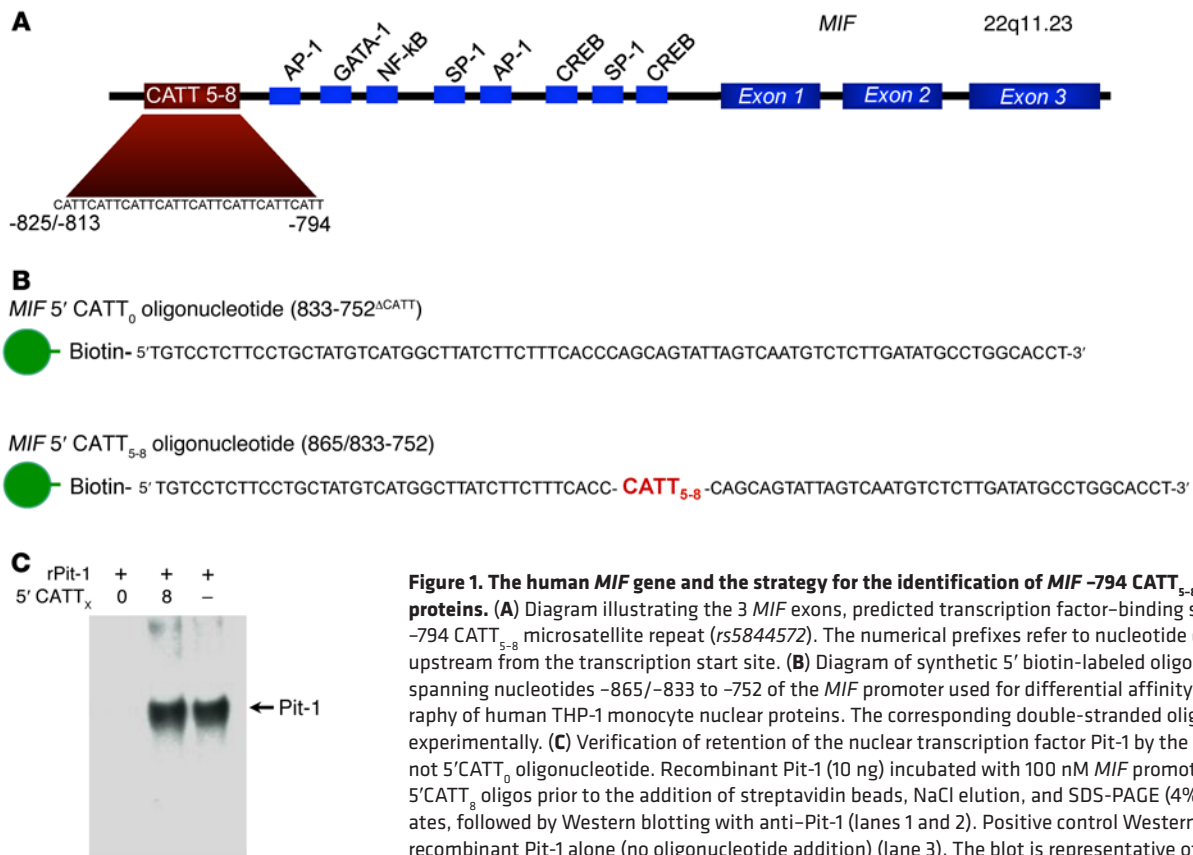


Figure 1. The human *MIF* gene and the strategy for the identification of *MIF* -794 CATT₅₋₈-interacting proteins. (A) Diagram illustrating the 3 *MIF* exons, predicted transcription factor-binding sites, and the -794 CATT₅₋₈ microsatellite repeat (*rs5844572*). The numerical prefixes refer to nucleotide distance (in bp) upstream from the transcription start site. (B) Diagram of synthetic 5' biotin-labeled oligonucleotides spanning nucleotides -865/-833 to -752 of the *MIF* promoter used for differential affinity chromatography of human THP-1 monocyte nuclear proteins. The corresponding double-stranded oligos were used experimentally. (C) Verification of retention of the nuclear transcription factor Pit-1 by the 5'CATT₈ but not 5'CATT₀ oligonucleotide. Recombinant Pit-1 (10 ng) incubated with 100 nM *MIF* promoter 5'CATT₀ or 5'CATT₈ oligos prior to the addition of streptavidin beads, NaCl elution, and SDS-PAGE (4%-12%) of eluates, followed by Western blotting with anti-Pit-1 (lanes 1 and 2). Positive control Western blot showing recombinant Pit-1 alone (no oligonucleotide addition) (lane 3). The blot is representative of 3 experiments.

To obtain the first insight into the functional regulation of the *MIF* promoter microsatellite and its role in disease susceptibility to our knowledge, we used a proteomic approach to identify candidate nuclear transcription factors that interact with the *MIF* -794 CATT₅₋₈ site. This analysis revealed inverted CCAAT box-binding protein of 90 kDa (ICBP90, also known as ubiquitin-like containing PHD ring finger 1 [UHRF1]) to be essential for the CATT₅₋₈ length-dependent regulation of *MIF* transcription in several immune cell types. Whole-genome transcriptional analysis revealed a number of ICBP90-dependent immune response genes that overlap with immune response genes that are *MIF* dependent, suggesting that ICBP90 exerts a central upstream influence on inducible *MIF* expression.

Results

Identification of ICBP90 as a *MIF* -794 CATT₅₋₈-interacting protein.

To identify candidate proteins that interact with the *MIF* -794 CATT₅₋₈ microsatellite, we synthesized 5' biotin-labeled oligonucleotides spanning this region of the *MIF* promoter (-865/-833 to -752) but differing in CATT repetition (with CATT₀ as control) and incubated them with human monocyte nuclear lysates, followed by streptavidin absorption and graded NaCl elution (Figure 1B). We verified the utility of this approach by testing for the CATT-specific interaction of the transcription factor Pit-1, which may bind CATT motifs (20), by Western blotting. As shown in Figure 1C, this analysis revealed the retention of recombinant Pit-1 by the *MIF* 5'CATT₈ oligo but not the control 5'CATT₀ oligo. We next analyzed the monocyte nuclear proteins absorbed by the 5'CATT₈-

containing oligonucleotides versus the 5'CATT₀-containing oligonucleotides by 2D gel electrophoresis (Figure 2A). The overall complexity of retained proteins was low, and additional and more abundant proteins were evident after electrophoresis of the *MIF* 5'CATT₈ oligo-bound complexes versus the 5'CATT₀ oligo-bound complexes. MALDI-TOF analysis of the 3 most abundant proteins present in the 5'CATT₈ oligo-bound complexes identified these to be nucleolar transcription factor-1 (expectation value 1.90×10^{-30}), the transcription factor ICBP90 (expectation value 2.70×10^{-20}), and Pit-1 itself (expectation value 6.80×10^{-6}) (Tables 1 and 2). As nucleolar transcription factor-1 is an abundantly expressed regulator of RNA polymerase that also appeared in the presence of the 5'CATT₀ oligo, we focused attention on ICBP90 (27). Western blot analysis of monocyte nuclear proteins incubated with 5'CATT₅₋₈ oligonucleotides revealed a CATT_x length-dependent retention of ICBP90 (Figure 2B). Further evidence for the specific interaction between the *MIF* promoter CATT_x site and ICBP90 was provided by EMSA. The addition of nuclear proteins from human monocytes shifted the mobility of a biotin-labeled, CATT₈-containing *MIF* promoter oligonucleotide (Figure 2C, lane 1 vs. 6), and this effect was eliminated by excess unlabeled 5'CATT₈ oligonucleotide (Figure 2C, lane 3) but not 5'CATT₀ oligonucleotide (Figure 2C, lane 2) and inhibited by pretreating nuclear proteins with anti-ICBP90 (Figure 2C, lane 4). ChIP followed by subcloning and DNA sequencing of the PCR amplicon confirmed ICBP90 occupancy of the *MIF* promoter (Figure 2D and data not shown).

As an initial test for the regulation of *MIF* expression by ICBP90, we prepared a CMV promoter-based expression plasmid

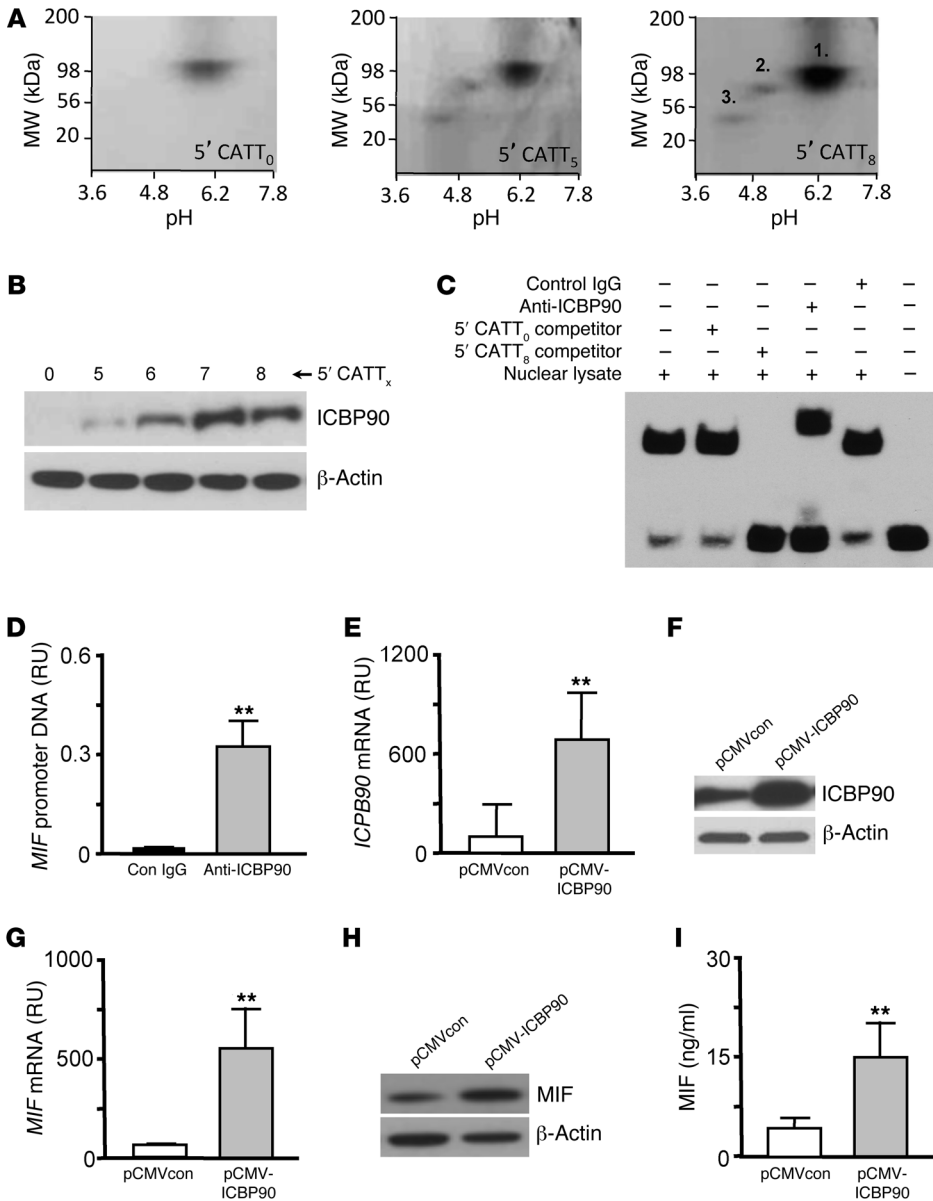


Figure 2. Proteomic identification of the transcription factor ICBP90. (A) 2D gel electrophoresis and silver staining of human THP-1 monocyte nuclear proteins eluted from the *MIF* promoter 5'CATT₀- (control), 5'CATT₅-, and 5'CATT₈-containing oligonucleotides, respectively. (B) *MIF* promoter 5'CATT_x length-dependent retention of ICBP90 detected by Western blotting of eluted nuclear proteins with an anti-ICBP90 antibody. Anti-β-actin served as a protein loading control. (C) EMSA verification of the interaction of ICBP90 with the 5'CATT₈ site in the *MIF* promoter. Nuclear lysate decreases the mobility of a biotin-labeled, CATT₈-containing *MIF* promoter oligonucleotide (lanes 1 and 6). This effect is eliminated by the addition of a 200-fold excess of unlabeled 5'CATT₈ oligonucleotide (lane 3) but not 5'CATT₀ oligonucleotide (lane 2) and inhibited by anti-ICBP90 (lane 4) but not control IgG (lane 5). (D) Amplification of *MIF* promoter DNA by ChIP of human PBMC DNA with anti-ICBP90 but not control IgG. RU, fluorescence relative units of amplified DNA. Similar results were obtained with PBMC DNA from healthy control and subjects with rheumatoid arthritis (data not shown). (E) *ICBP90* mRNA expression analyzed by qPCR in 1 × 10⁶ HEK293 cells transfected 16 hours previously with pCMV-ICBP90 or an empty vector (pCMVcon). (F) Intracellular ICBP90 protein analyzed by Western blotting of cell lysates together with a β-actin loading control. (G) Corresponding changes in intracellular *MIF* mRNA (qPCR), (H) intracellular MIF protein content (Western blotting), and (I) MIF secretion into 24-hour conditioned medium (ELISA). Data are mean±SD of 3 measurements, with all experiments replicated twice (n = 3 measurements per experiment). **P < 0.01 by 2-tailed Student's *t* test. Displayed blots are representative of 3 independent experiments.

encoding ICBP90 and transfected it into human HEK293 target cells. As shown in Figure 2, E and F, the pCMV-ICBP90 plasmid led to a 7-fold increase in the *ICBP90* mRNA level as well as an appreciable increase in intracellular, immunoreactive ICBP90 protein. This increase in cellular ICBP90 expression was associated with an 8-fold increase in *MIF* mRNA, an increase in intracellular MIF content, and a 2.5-fold increase in secreted MIF (Figure 2, G-I).

LPS stimulates MIF production from monocytes/macrophages (28). We tested whether LPS increases the cellular expression of ICBP90 and, further, whether an shRNA-mediated reduction in cellular ICBP90 decreases LPS-inducible MIF expression. The addition of LPS to human monocytes increased the cellular expression of ICBP90 by 30%, and both the baseline and LPS-stimulated expression of ICBP90 were reduced by an ICBP90 shRNA (Figure 3A). These effects were associated with corresponding changes in the intracellular content of ICBP90 protein (Figure 3B). Of note, the inflammatory

activation of monocytes was associated with a CATT repeat-dependent enhancement of *MIF* promoter-binding activity by ICBP90, as assessed by pull-down assays of LPS-stimulated and unstimulated nuclear lysates incubated with *MIF* promoter 5'CATT₀₋₈ oligonucleotides (Figure 3C). By contrast, Pit-1 was barely detectable in monocyte nuclear extracts. LPS-activated monocytes exhibited a 30% increase in *MIF* mRNA when compared with unstimulated controls, and both the constitutive and inducible levels of *MIF* mRNA were reduced by pretreatment with ICBP90 shRNA (Figure 3D). These effects on cellular *MIF* mRNA expression were associated with corresponding changes in the levels of secreted MIF protein (Figure 3E) as well as in the production of the downstream, MIF-dependent cytokine, TNF-α (Figure 3F). ICBP90 undergoes PKA-dependent phosphorylation on Ser²⁹⁸, which enhances its interaction with target DNA (29). Phospho-ICBP90 (pICBP90) showed increased 5'CATT₀₋₈ length-dependent binding, as revealed by reduced 5'CATT₅₋₈-

Table 1. MS/MS identification of proteins retained by the MIF promoter 5'CATT₈ oligonucleotides

Score	Expectation	Protein ID	Protein name	MW (Da)	Coverage (%)
351	1.90×10^{-30}	gi 7657671	Nucleolar transcription factor-1	89,350	24.1
249	2.70×10^{-20}	gi 6815251	Transcription factor ICBP90	89,759	11.7
95	6.80×10^{-6}	gi 307335	Pit-1	32,968	13.1

Numbers in the "Score" column are the Mascot software calculations for observed mass spectra matched to aa sequences within each protein.

associated pICBP90 immunoreactivity in LPS-stimulated human monocytes treated with the PKA inhibitor H-89 (Figure 3G).

ICBP90 regulates MIF expression in response to TLR agonists in a 5'CATT₅₋₈-dependent manner. Given the low abundance and absence of inflammatory induction of Pit-1 (Figure 3C), we focused further attention on defining the regulatory role of ICBP90 in -794 CATT₅₋₈-dependent MIF expression. MIF production by human monocytes/macrophages or peripheral blood leukocytes is induced by activation of a number of TLRs, including TLR2, TLR4, TLR7, and TLR9 (12, 21, 30). To assess the functional role of ICBP90 in TLR-activated MIF expression, we measured the transcriptional activity of human THP-1 monocytes transfected with MIF -794 CATT₅₋₈ promoter-luciferase fusion plasmids and stimulated them with different TLR ligands in the presence of a control or ICBP90 shRNA. Both basal and TLR-stimulated transcriptional activity of the MIF promoter increased proportionally as a function of CATT length, with -794 CATT₅ showing the lowest gene transcription and -794 CATT₈ showing the highest gene transcription (Figure 4, A-F). The greatest effect of ICBP90 knockdown on inducible transcription was for the TLR4 agonist LPS, with smaller differences in MIF expression observed in response to the TLR1/2 agonist Pam3CysK. These results agree with recent evidence that CATT alleles have a role in the human host response to Gram-negative and mycobacterial infections, in which TLR4 and TLR1/2, respectively, mediate microbial recognition (13, 31). ICBP90 knockdown had less effect on the stimulus-induced upregulation of MIF expression induced by dsRNA (TLR3), flagellin (TLR5), or CpG DNA (TLR9) than observed for TLR4 or TLR1/2 agonists, which suggests a less dominant role for ICBP90 in the response to these agonists, at least in the context of this defined monocyte-based assay. In addition, we examined the influence of ICBP90 in human primary peripheral blood mononuclear cells (PBMCs) and observed a similar inhibitory effect of ICBP90 shRNA on -794 CATT₅₋₈ length-dependent basal and LPS-induced MIF expression (Figure 4, G and H).

Treatment of human monocytes with MIF or ICBP90 shRNA resulted in equivalent decreases in LPS-stimulated MIF production, which is consistent with the interpretation that ICBP90 plays a direct upstream role in the TLR4-induced MIF response of human monocytes (Figure 5A). MIF itself exerts an upstream autocrine/paracrine-activating effect on monocytes, and Mif deficiency is associated with a reduction in the stimulus-induced production of TNF- α , IL-1 β , IL-6, IL-8, and MCP-1 (4, 16, 32-34). We compared the effect of shRNA directed against ICBP90 with that directed against MIF on LPS-activated human monocytes by measuring the downstream production of these cytokines (and after

confirming the absence of CATT motifs in their corresponding gene promoters). MIF or ICBP90 shRNA inhibited, to an equivalent degree, the time-dependent production of TNF- α , IL-1 β , IL-6, IL-8, and MCP-1, supporting the conclusion that the MIF-dependent augmentation of these proinflammatory cytokines relies on ICBP90 (Figure 5, B-F).

ICBP90 regulates MIF expression in human B and T lymphocytes. MIF is expressed by lymphoid and stromal cells and under both constitutive and activating conditions (35, 36). Treatment of human Raji B cells or Jurkat T cells with ICBP90 shRNA effectively reduced ICBP90 mRNA and intracellular protein content and was associated with a corresponding decrease in the constitutive levels of MIF mRNA and secreted protein (Figure 6, A-H). Human T cells transfected with MIF CATT₅₋₈ promoter-luciferase fusion plasmids and stimulated with PMA also showed -794 CATT₅₋₈ length-dependent expression of MIF mRNA that was regulated by ICBP90 (Figure 6I).

Role of ICBP90 in the regulation of MIF expression by rheumatoid synovial fibroblasts. Human genetic studies implicate high-expression MIF alleles in rheumatoid arthritis, and experimental data suggest a pathogenic role for MIF as a product of synovial fibroblasts that promotes their proliferative and invasive phenotype in the joint (10, 37, 38). We assessed the influence of ICBP90 on MIF mRNA expression and protein production by rheumatoid synovial fibroblasts, which remain activated after isolation and in vitro cultivation (39). Genetic knockdown of ICBP90 by shRNA reduced cellular ICBP90 mRNA by approximately 70% (Figure 6J) and led to a concomitant reduction in ICBP90 protein (Figure 6K), together with a significant decrease in the expression of MIF mRNA (Figure 6L), intracellular MIF content (Figure 6M), and constitutive MIF secretion (Figure 6N).

To better understand the primacy of ICBP90 in the regulation of MIF and MIF-directed gene expression, synovial fibroblasts freshly isolated from the affected joints of 3 patients with rheumatoid arthritis were treated with shRNA against ICBP90 or MIF, and their whole-genome transcriptional profiles were compared by microarray analysis. Threshold Ct values for the reduction in MIF expression in response to ICBP90 shRNA (24-32 cycles) were nearly as complete as the reduction in Ct values observed in response to MIF shRNA (24-34 cycles) (Figure 7A). Principal com-

Table 2. ICBP90 peptide sequences

ICBP90 (aa)	Peptide sequence
693-717	LWNEVLASLKDORPASGSPFQLFLSK
596-618	DRIKKLGITMQYPEGYLEALANR
507-525	ALALNCFAPINDQEGAEAK
671-686	VEPYSLTAQQSSLIR
571-577	SGFLVWR

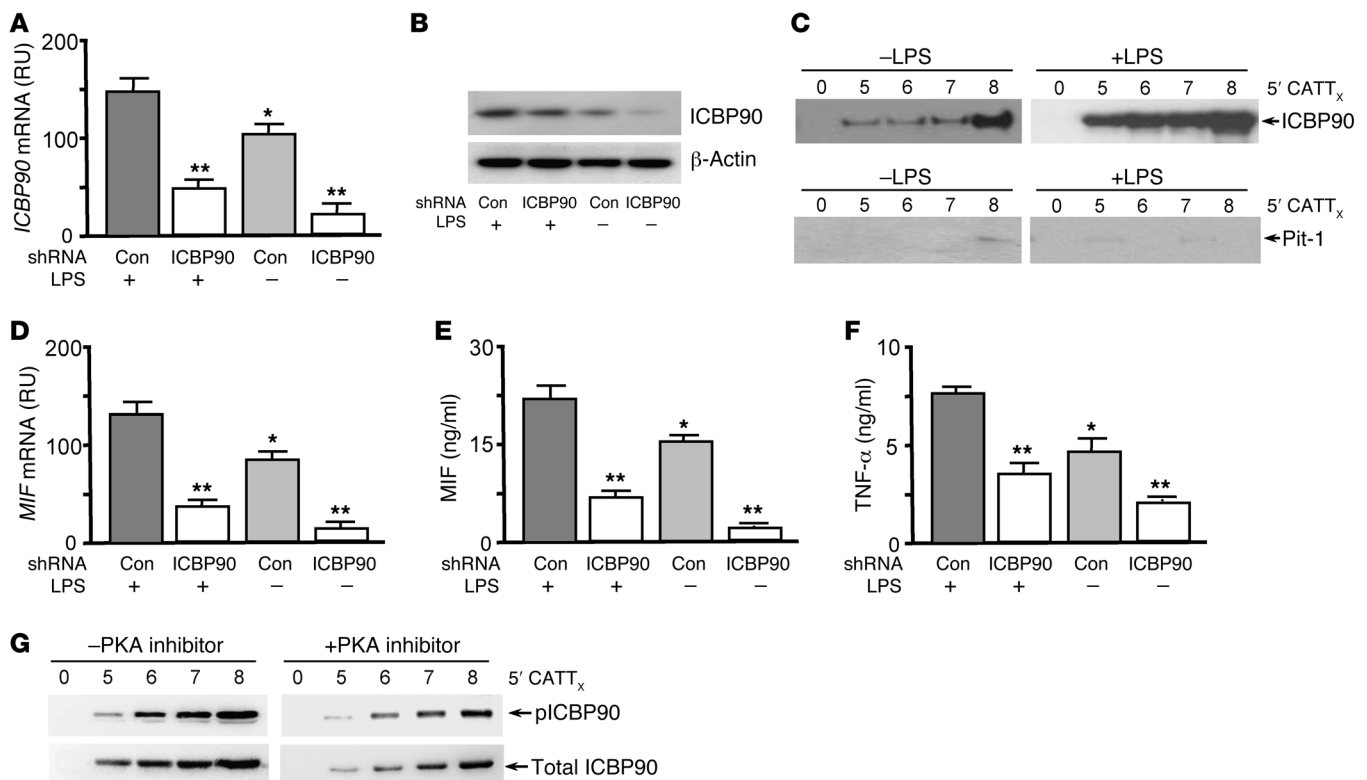


Figure 3. ICBP90 binds to the *MIF* -794 CATT₅₋₈ promoter sequence in an activation- and CATT length-dependent manner. (A) *ICBP90* mRNA expression analyzed by qPCR in human THP-1 monocytes (1×10^6) treated with 0.5 μ g of a control or ICBP90 shRNA prior to stimulation with LPS (100 ng/ml, 16 hours). (B) Corresponding cellular content of ICBP90, as measured by Western blotting, with anti-ICBP90 or anti- β -actin as a protein control. (C) Detection of DNA-bound ICBP90 after incubation of the nuclear lysates that were collected from the cells used to determine cellular ICBP90 content with 100 nM each of the biotin-labeled 5'CATT₀₋₈ oligonucleotides spanning the *MIF* promoter (-865/-833 to -752). The 5'CATT₀₋₈ oligonucleotide-bound proteins were removed by streptavidin bead absorption after 3 hours at 4°C, and 1 μ g of each sample was electrophoresed and immunoblotted with an anti-ICBP90 or an anti-Pit-1 antibody. (D) Quantification by qPCR of *MIF* mRNA in human THP-1 monocytes treated with ICBP90 or control shRNA followed by stimulation with LPS (100 ng/ml, 16 hours), together with corresponding effects on (E) MIF and (F) TNF- α protein secretion into 24-hour-conditioned medium. (G) Western blot detection of 5'CATT₀₋₈-bound ICBP90 after incubation of nuclear lysates from LPS-stimulated human THP-1 monocytes cotreated with the PKA inhibitor H-89 (20 μ M) or vehicle control. The 5'CATT₀₋₈ oligonucleotide-bound proteins were removed by streptavidin bead absorption after 3 hours at 4°C and 1 μ g of each sample was electrophoresed and immunoblotted with an anti-ICBP90 (Total) or anti-pICBP90 antibody. Data are mean+SD of 3 measurements, with all experiments replicated twice ($n = 3$ measurements per experiment). * $P < 0.05$ for LPS⁻ vs. LPS⁺ controls, ** $P < 0.01$ for ICBP90 shRNA vs. corresponding control shRNA (Con) (1-way ANOVA with Tukey's post-hoc test).

ponent analysis showed distinct coclustering of the gene expression profiles influenced by ICBP90 and MIF shRNAs (data not shown). Fifty percent (45 of 89) of the genes that were downregulated and ninety-seven percent (36 of 37) of the genes that were upregulated by ICBP90 shRNA were similarly influenced by MIF shRNA, suggesting that ICBP90 is a major regulator of *MIF* transcription in rheumatoid arthritis synoviocytes (Figure 7B). MIF shRNA treatment was associated with the downregulation of an additional 544 genes and upregulation of 733 genes, which reflects the broad and downstream autocrine/paracrine influence of MIF expression on cellular signaling and activation pathways (31, 40, 41). As ICBP90 primarily affects inducible *MIF* expression, the greater number of genes affected by MIF than by ICBP90 knock-down most likely reflects the broad influence of constitutive and non-ICBP90-dependent effects of MIF on cellular processes. Heatmaps for the highest scoring genes (1.5-fold differential expression, FDR < 0.05, Figure 7C) confirmed the coordinate regulation by ICBP90 and MIF of 4 of 5 innate cytokines (TNF- α , MCP-1, IL-6, and IL-1 β) observed previously in human monocytes

(Figure 5). The expression of IL-8 was downregulated by ICBP90 and MIF shRNA in monocytes (Figure 5E) and only by MIF shRNA in synovial fibroblasts. This may reflect the higher inducible expression of this neutrophil chemokine by monocytes than by fibroblasts (42) or the relative insensitivity of *IL8* to ICBP90 regulation in fibroblasts compared with that in monocytes.

ICBP90 is expressed in human synovia and correlates with MIF expression in vivo. Both high CATT repeat number and increased MIF expression have been associated with the incidence or clinical severity of different forms of autoimmune arthritis, including rheumatoid arthritis (10-12). To assess whether ICBP90 is involved in regulating *MIF* expression in vivo, we examined the expression levels of *ICBP90* and *MIF* mRNA in a registry of synovial tissue samples obtained by synovectomy and subjected previously to whole-tissue microarray analysis. These samples included mRNA obtained from the joints of individuals with rheumatoid arthritis and osteoarthritis. Overall, the rheumatoid synovia showed a higher mean level of *MIF* expression than the osteoarthritic synovia, which is in agreement with prior reports

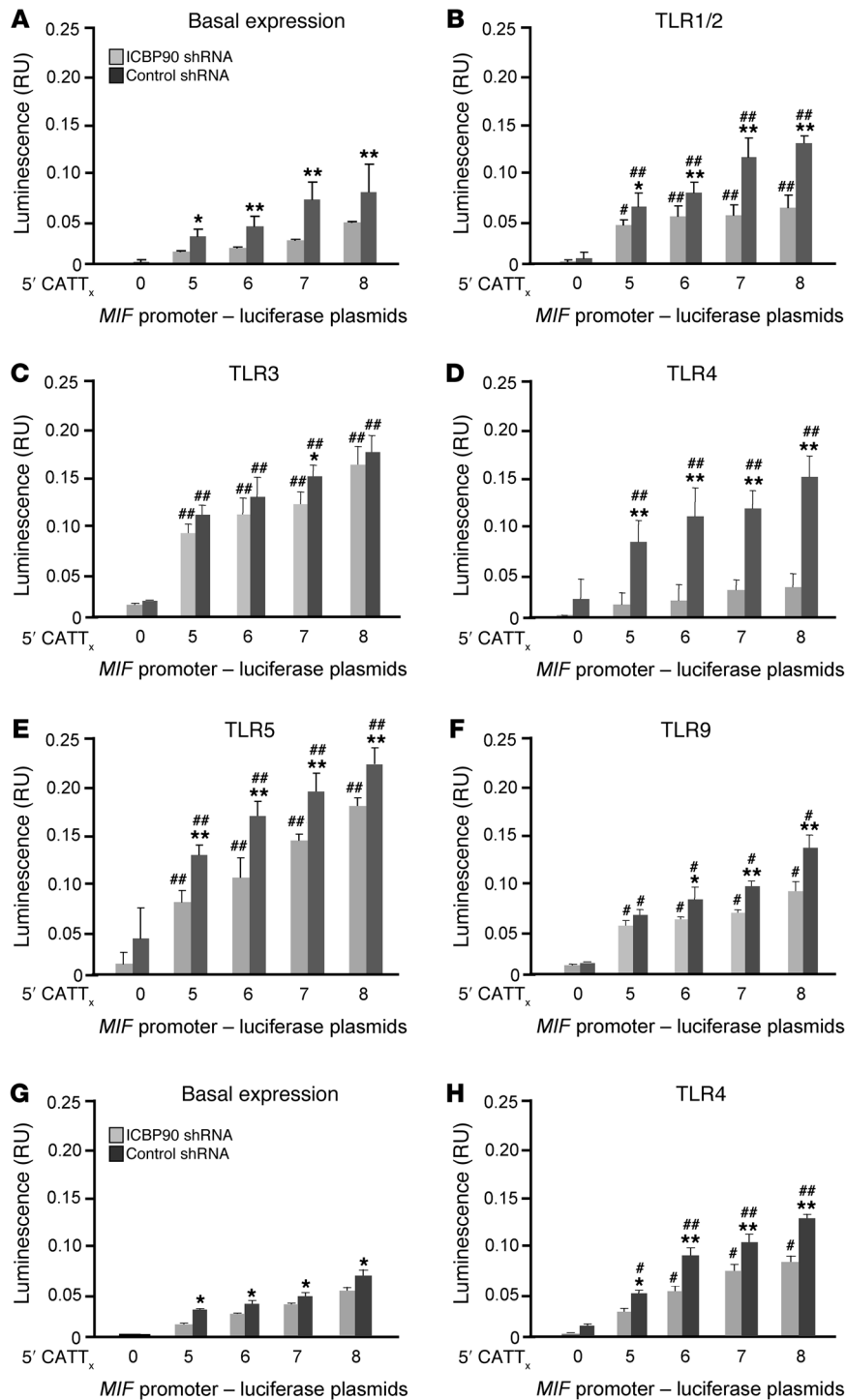


Figure 4. Regulation of TLR-activated MIF expression in human monocytes by ICBP90. THP-1 monocytes were transfected with *MIF* promoter-luciferase reporter plasmids bearing 0, 5, 6, 7, and 8 CATT repeats and treated with an ICBP90 or control shRNA, cultured for 6 hours, and (A) were left unstimulated or were stimulated with (B) Pam3CysK (100 ng/ml) for TLR1/2 agonism, (C) polyI:C (1 μg/ml) for TLR3 agonism, (D) LPS (100 ng/ml) for TLR4 agonism, (E) flagellin (100 ng/ml) for TLR5 agonism, or (F) CpG DNA (5 μM) for TLR9 agonism prior to measurement of luciferase activity. Primary human peripheral blood monocytes were similarly analyzed under (G) basal and (H) LPS-stimulated conditions (100 ng/ml). Data are presented as the mean±SD of 3 measurements, with all experiments replicated twice (*n* = 3 measurements per experiment). **P* < 0.05, ***P* < 0.01 for control shRNA vs. ICBP90 shRNA within each panel; #*P* < 0.05, ##*P* < 0.01 for stimulated vs. basal expression for B–F vs. A and for H vs. G (2-tailed Student’s *t* test).

and reflects the generally noninflammatory nature of osteoarthritis (10, 43, 44). Notably, a significant correlation was observed within the rheumatoid arthritis group between the tissue expression of *ICBP90* and *MIF* ($r^2 = 0.602$, $P < 1.8 \times 10^{-9}$) (Figure 7D). A correlation was not observed in osteoarthritis subjects, in which the observed expression of both genes was significantly lower than that in synovia from subjects with rheumatoid arthritis. This correlated expression of *ICBP90* and *MIF* supports a functional role of *ICBP90* in the inflammatory expression of *MIF* in rheumatoid arthritis. Both rheumatoid synovia in situ and rheumatoid

synovial fibroblasts in vitro express increased levels of *MIF* when compared with synovial tissue or fibroblasts obtained from osteoarthritis synovia (43, 44). Finally, we examined the influence of the *MIF* promoter microsatellite on *MIF* expression in early-passage rheumatoid synovial fibroblasts isolated from the synovia of patients who were either low (*CATT*₅-containing genotypes) or high (*CATT*₆- and *CATT*₇-containing genotypes) *MIF* expressors. Both *MIF* mRNA expression and *MIF* protein production were greater in synovial fibroblast lines of high *MIF* expressors when compared with those of low *MIF* expressors.

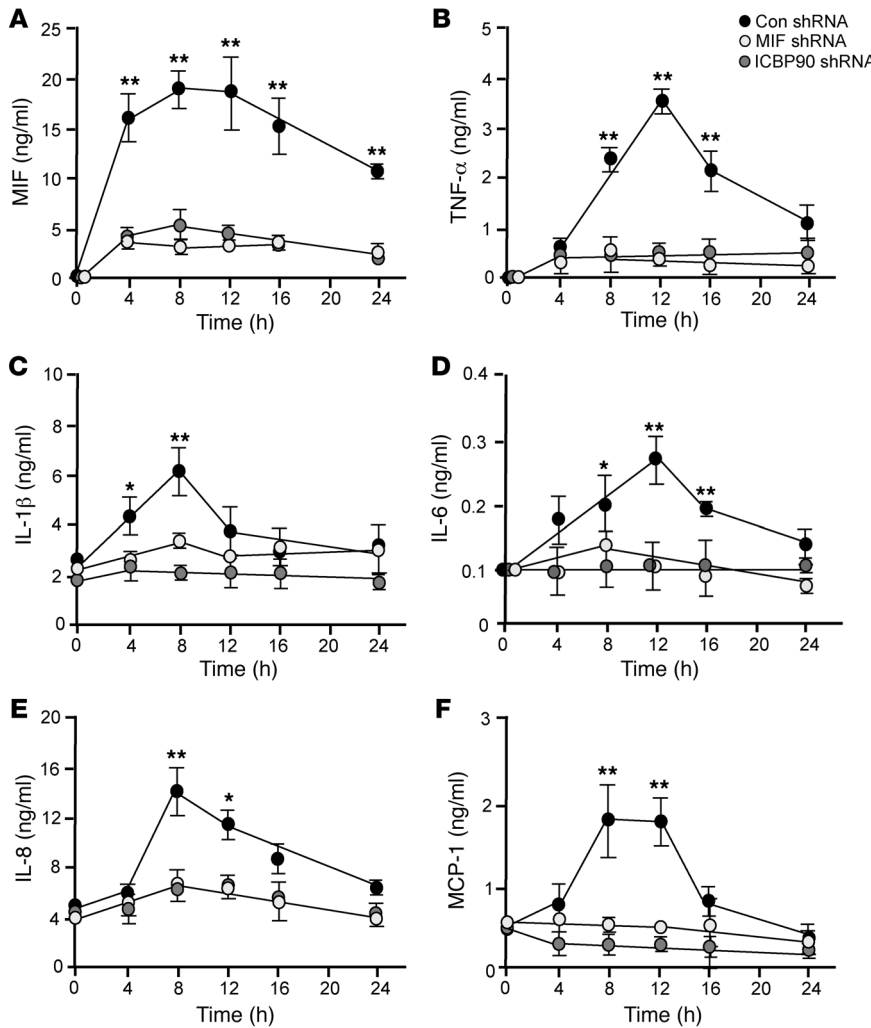


Figure 5. Comparative effect of ICBP90 versus MIF knockdown on MIF-dependent cytokine production. Human THP-1 monocytes were treated with shRNA directed against ICBP90, MIF, or an shRNA control and stimulated for 6 hours with LPS (100 ng/ml). Conditioned media then were harvested for analysis by specific ELISA for (A) MIF, (B) TNF-α, (C) IL-1β, (D) IL-6, (E) IL-8, and (F) MCP-1. Data are presented as the mean±SD of 3 measurements, with all experiments replicated twice (n = 3 measurements per experiment). *P < 0.05, **P < 0.01 for control shRNA versus MIF shRNA as well as for control shRNA versus ICBP90 shRNA by 1-way ANOVA for repeated measurements followed by Dunnett’s test for comparing the 2 knockdown groups with the control group at individual time points. P values are shown only for those comparisons that were significantly different.

Discussion

The identification of candidate susceptibility genes for autoimmunity is prompting closer investigation of their transcriptional regulation, with the objective of creating a more comprehensive understanding of functional interactions between loci. The -794 CATT₅₋₈ microsatellite length variants within the *MIF* promoter exist commonly in the population and have been linked to the susceptibility or clinical severity of several autoimmune and infectious diseases (10, 12, 13). These functional alleles also show global population stratification, with the highest prevalence of the low-expression -794 CATT₅ allele found in sub-Saharan Africa, where it may protect individuals from the lethal inflammatory sequelae of malaria (45, 46).

In the absence of information about the transcriptional regulation of the *MIF* microsatellite, we embarked on a proteomic approach to identify candidate proteins that might interact with the -794 CATT₅₋₈ site from the nuclei of monocytes, which are a major cellular source of MIF in vivo (28). While Pit-1 has been suggested to be a CATT-interacting transcription factor, a notion supported by the cloning of MIF from AtT-20 pituitary cells (9, 21), we found only very low, albeit detectable, Pit-1 expression or interaction with the *MIF* promoter in human mononuclear cells. Our proteomic and functional analyses did identify ICBP90,

a 90-kDa transcription factor characterized by a RING finger domain, in -794 CATT₅₋₈ length-dependent *MIF* expression. First identified in proliferating cancer carcinoma tissues, ICBP90 has been reported to regulate G₁/S cell-cycle transition (27, 47), which is notable given independent evidence that MIF influences tumorigenesis via checkpoint arrest and genomic instability (47, 48). ICBP90 has not been implicated previously in inflammatory processes but appears essential for -794 CATT₅₋₈ length-dependent *MIF* expression in several immune cell types as well as in rheumatoid synoviocytes. The PKA-dependent phosphorylation of ICBP90 at Ser²⁹⁸ enhances its binding to DNA promoters (29), and we observed a similar augmentation by pICBP90 in -794 CATT₅₋₈ length-dependent binding. By RNA interference, concordance was observed across several immune cell types (e.g., monocytes, B and T lymphocytes, and rheumatoid synoviocytes) between ICBP90 and MIF expression at both the mRNA and protein levels.

Monocytes/macrophages express MIF at baseline, and circulating MIF levels can be stratified by an individual’s genotype (10, 12, 13). Diverse activating stimuli upregulate *MIF* production, and the data herein support an important role for ICBP90 in both constitutive and inducible -794 CATT₅₋₈ length-dependent *MIF* expression. RNA interference studies in monocytes transfected with *MIF* -794 CATT₅₋₈ promoter constructs showed ICBP90 to

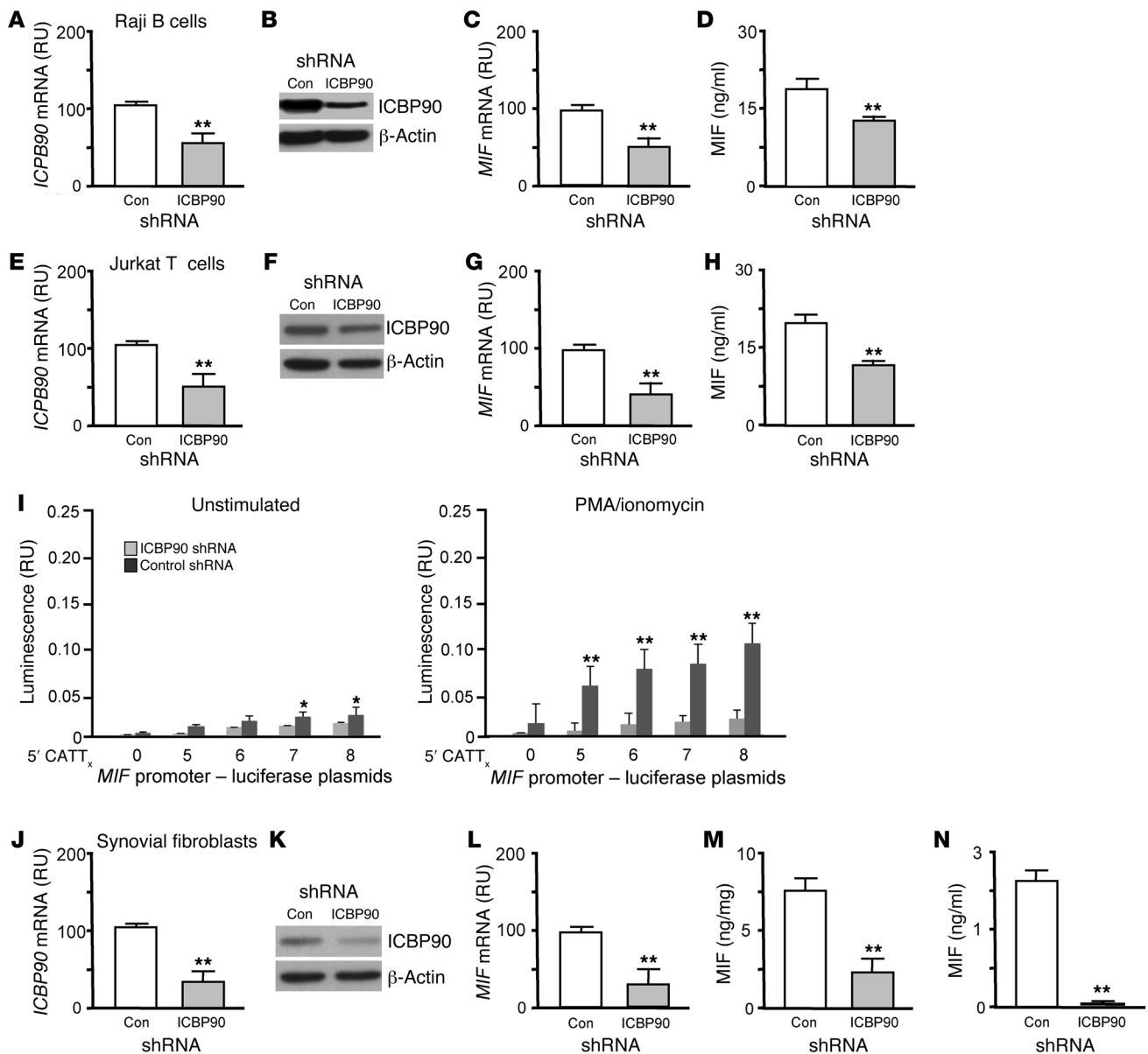


Figure 6. ICBP90 regulates MIF expression in human lymphocytes and rheumatoid synovial fibroblasts. Cultured Raji B cells were transfected with control or ICBP90 shRNA. Eight hours later (A) *ICBP90* mRNA and (B) intracellular ICBP90 protein content were measured by qPCR and Western blotting, respectively. (C) Cellular *MIF* mRNA was determined by qPCR, and (D) secreted MIF was determined by ELISA. Human Jurkat T cells were transfected with control or ICBP90 shRNA and analyzed for (E) *ICBP90* mRNA, (F) intracellular ICBP90 protein content, (G) *MIF* mRNA, and (H) secreted MIF as above. (I) Jurkat T cells were transfected with *MIF* promoter-luciferase reporter plasmids, treated with an ICBP90 or control shRNA, cultured for 6 hours, and stimulated or not with PMA/ionomycin (100 ng/ml). Cultured human synovial fibroblasts were transfected with control or ICBP90 shRNA. Eight hours later (J) *ICBP90* mRNA and (K) intracellular ICBP90 protein content were measured by qPCR and Western blotting, respectively. (L) Cellular *MIF* mRNA was determined by qPCR, and (M) cytosolic and (N) secreted MIF were quantified by ELISA. Cytosolic MIF is expressed as ng immunoreactive MIF/total cellular protein. Data are presented as the mean±SD of 3 measurements, with all experiments replicated twice ($n = 3$ measurements per experiment). * $P < 0.05$, ** $P < 0.01$ by 2-tailed Student's *t* test for control shRNA vs. ICBP90 shRNA (A, C–E, G–J, and L–N) and for PMA/ionomycin stimulated vs. unstimulated conditions (I).

have its strongest effect on *MIF* expression induced by bacterial agonists for TLR4 and TLR1/2, which is notable given reports that clinical outcome from infections by *Neisseria meningitidis* and *Mycobacterium tuberculosis*, which activate the TLR4 and TLR1/2 receptors, respectively, is influenced by *MIF* genotype (13, 49). In addition, studies in subjects with systemic lupus erythematosus have shown that PBMCs from high or low *MIF* expressors stimulated with nucleic acid agonists produce MIF in a genotype-

specific manner (12). Experimental reduction of ICBP90 expression was associated with a much smaller decrease in inducible *MIF* expression by nucleic acid agonists for TLR3 and TLR9 than was observed for stimulation of TLR1/2 and TLR4. This finding likely reflects a less dominant role for ICBP90 in the TLR3/9-mediated upregulation of *MIF* but also may be influenced by the relatively low expression level of these two pattern recognition receptors on monocytes when compared with circulating dendritic cells (50).

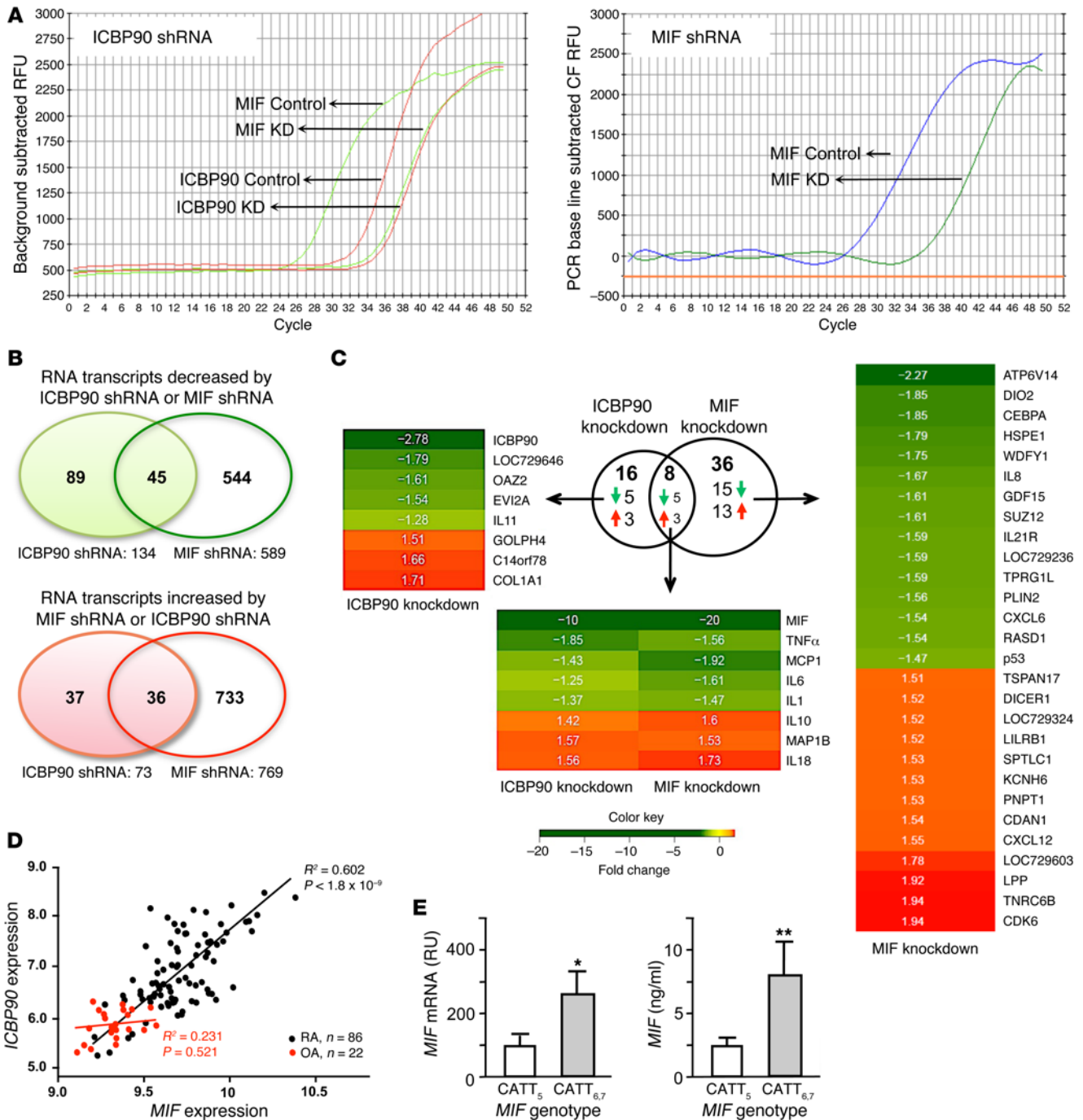


Figure 7. The ICBP90-dependent transcription response shows concordance with MIF-regulated genes in rheumatoid synovium. (A) Comparative effect in rheumatoid synovial fibroblasts of ICBP90 shRNA (or control) on *ICBP90* and *MIF* expression (left) versus *MIF* shRNA (or control) on *MIF* expression (right). No appreciable effect of *MIF* shRNA on *ICBP90* expression was observed (data not shown). (B) Venn diagrams illustrating the relationship between ICBP90- and *MIF*-regulated gene transcripts. (C) Expression heatmaps of genes selected for 1.5-fold differential expression with FDR < 0.05. Data are for synovial fibroblast cell lines isolated from 3 individuals with rheumatoid arthritis. (D) Correlation plots for *ICBP90* versus *MIF* mRNA expression in RNA samples obtained from the joint synovia of subjects with rheumatoid arthritis (RA, n = 86) or osteoarthritis (OA, n = 22). The expression scores were calculated from a quartile-trimmed mean of the normalized probe set values. $P < 0.0001$ for mean *MIF* expression in RA (12.81 ± 0.29) versus OA (9.37 ± 0.15); $P < 0.001$ for mean *ICBP90* expression in RA (7.98 ± 0.67) versus OA (5.82 ± 0.334) by 2-tailed Student's *t* test. (E) High genotypic *MIF* expressor human rheumatoid synovia express greater amounts of *MIF* mRNA and *MIF* protein than low *MIF* expressor genotypes. *MIF* mRNA was measured by qPCR analysis and expressed relative to 18S rRNA mRNA, and supernatant *MIF* content was measured by ELISA in 72-hour cultures of early-passage synoviocytes. Four patient-derived early-passage synovial fibroblast lines were studied for each genotype group (i.e., 4 CATT₅-containing genotype lines and 4 CATT₆- and CATT₇-containing genotypes). Three measurements were obtained for each genotyped cell line. Mean \pm SD. * $P < 0.05$, ** $P < 0.02$ by 2-tailed Student's *t* test.

Under conditions of TLR4 stimulation, experimental reduction of *ICBP90* or *MIF* expression produced an equivalent decrease in the downstream expression of known MIF-dependent cytokines, namely TNF, IL-1 β , IL-6, IL-8, and MCP-1.

A more detailed comparative expression analysis of *ICBP90*- and MIF-dependent transcription was performed using whole-genome microarray analysis of rheumatoid synovial fibroblasts. These cells maintain an activated phenotype *in vitro* and can be transfected with high efficiency, which facilitates such analysis, and a role for variant *MIF* alleles in joint erosion has been established previously by human genetic data and functional studies in *Mif*-deficient mice (10, 37). This analysis revealed close concordance between the genes influenced by *ICBP90* and by MIF knockdown, with 50% and 97% of the genes downregulated and upregulated, respectively, by *ICBP90* observed to be regulated similarly by MIF. These data affirm the upstream regulatory role of *ICBP90* in *MIF* expression and suggest a high specificity of *ICBP90* for MIF-dependent transcription in synoviocytes, with a marked effect on several proinflammatory cytokines, chemokines, and their receptors. MIF knockdown influences an additional 1,277 gene transcripts (544 downregulated, 733 upregulated), which is accord with the known activating role of MIF in downstream cellular processes (31, 40, 41).

High expression *MIF* alleles defined by greater than 5 repetitions of the -794 CATT_x, most significantly CATT₇, have been linked to the clinical severity of several autoimmune diseases and across different populations (10–12). In rheumatoid arthritis, higher repeat variants are associated with higher circulating MIF levels and with more severe radiologic joint damage. Additionally, separate studies have shown disease activity to correlate with synovial MIF expression (10, 43). In a gene expression data set of rheumatoid synovial tissues, we observed a close correlation between *ICBP90* and *MIF* expression, supporting the regulatory role of *ICBP90* in *MIF* transcription *in vivo*.

In conclusion, these studies identify *ICBP90* as a transcription factor regulating -794 CATT₅₋₈ length-dependent *MIF* expression. MIF is expressed in numerous cell types outside the immune system, and the present findings do not exclude a role for other CATT_x-interacting transcription factors, yet to be identified, in the tissue-specific regulation of the *MIF* promoter microsatellite (1). It is notable that an increasing body of literature implicates MIF in stress responses and a role for Pit-1 in neuroendocrine cell types may still be defined (23, 51). Within the context of the rheumatoid synovium, it is noteworthy that *ICBP90* action appears highly specific for MIF, suggesting that further investigation of the role of *ICBP90* in inflammatory processes and disease pathogenesis is warranted. *ICBP90* also may provide a functional link that will increase our understanding of MIF's role in the inflammatory pathogenesis of human tumors (52, 53), especially with emerging data suggesting associations between high expression *MIF* alleles and tumor progression (14, 54). Finally, given ongoing efforts to develop MIF-based therapies, which may be most beneficial in high *MIF* expressors, the present findings open the possibility of the pharmacological targeting of *ICBP90* in immunological and oncologic disease (19, 40, 55).

Methods

Cells and reagents. Human Jurkat T cell, THP-1 monocyte, and Raji B cell lines were from ATCC and were cultured in RPMI 1640 medium

containing 10% fetal bovine serum (low endotoxin, 0.5 EU/ml, BioWhittaker). Human HEK293 cells and early-passage primary rheumatoid synovial fibroblasts, isolated as described previously (39), were cultured in DMEM/10% fetal bovine serum. LPS (*E. coli* serotype O111:B4) was obtained from Sigma-Aldrich, and the synthetic lipopeptide Pam-3CysSerLys4 (Pam3CSK4) and flagellin were obtained from Invivogen. The anti-Pit-1 (sc-393943) and anti-*ICBP90* (ab57083) antibodies were from Santa Cruz Biotechnology and Abcam, respectively, and the anti-pSer antibody was from Cell Signaling Technology (catalog 9621). The PKA inhibitor H-89 was purchased from Calbiochem.

Nuclear protein affinity screening, 2D gel electrophoresis, and liquid chromatography-mass spectrometry. Five double-stranded oligonucleotides spanning the *MIF* promoter -794 CATT site (-865/-833 to -752) but differing in CATT repetition (e.g., 5, 6, 7, 8, with 0 as control) were synthesized, labeled with biotin at their 5' termini, and linked to M-280 Streptavidin Dynabeads (Invitrogen). Duplex DNA molecules were prepared by temperature reduction annealing of complementary 3'-oligos. Nuclear proteins were extracted from human THP-1 monocytes with the Qproteome Nuclear Protein Kit (Qiagen). Typically, 3 mg nuclear protein was incubated with test oligonucleotides at 4°C for 1 hour in 1 ml of binding buffer [10 mM HEPES, pH 7.9, 1.5 mM MgCl₂, 10 mM KCl, 0.5 mM DTT, and 100 ng/ml poly(dI-dC)]. The beads then were washed 3 times, and proteins were eluted with 0.1 ml aliquots of the same buffer containing 0.5 M NaCl.

For 2D gel electrophoresis, the eluted proteins were precipitated (2D Clean-Up Kit, GE Healthcare) and resuspended at 4°C in a labeling buffer containing 7 M urea, 2 M thiourea, 4% CHAPS (w/v), and 25 mM Tris (pH 8.6). The total protein content for each sample was determined by Nanodrop (Agilent). Labeling with the Cy2, Cy3, and Cy5 N-hydroxysuccinimidyl ester dyes was performed by a standard protocol (56), and the reaction was quenched with excess lysine. For the first-dimension isoelectric focusing gel, the 3 separately labeled samples were pooled and mixed with 400 μ l rehydration buffer containing 7 M urea, 2 M thiourea, 4% CHAPS (w/v), 1% DTT (w/v), 2% (v/v) Pharmalyte (GE Healthcare) (pH 3–10), and trace bromophenol blue before loading onto 24-cm pH 3–10 linear IPG strips. Isoelectric focusing was performed on an Ettan IPGphor 3 (GE Healthcare) for approximately 60 kVh at 20°C and 50 μ A per strip using the voltage gradient of 30 V for 1 hour, 500 V for 1 hour, and 1,000 V for 1 hour, followed by a linear gradient to 8,000 V over approximately 8 hours, until reaching 60 kVh. The IPG strips then were incubated with shaking in an equilibration buffer containing 6 M urea, 10 mM Tris (pH 6.8), 30% glycerol (w/v), 1% SDS (w/v), and 2% (w/v) DTT for 15 minutes at room temperature. The solution was replaced with equilibration buffer containing 5% iodoacetamide for an additional 10 minutes. For the 2D electrophoresis, the IPG strips were applied to 22- \times 24-cm SDS-PAGE gels (12% T, 2.6% C) and overlaid with low-melting point agarose in running buffer. The gels were run at 125 V (20°C) in an Ettan DALT twelve electrophoresis chamber. For image acquisition, gels were scanned with a Typhoon 9410 Imager at 100 μ m resolution, and the data were processed using ImageQuant V5.0 and DeCyder v6.5 software (all from GE Healthcare). Spot detection was conducted on image pairs consisting of each sample from the same gel, which allowed for image overlay and direct measurement of volume ratios of spots between samples.

For MALDI-TOF, protein spots first were subjected to robotic tryptic (Promega) digestion on a GE Healthcare Ettan TA Digerster.

Portions of the digest (1–1,000 fmols) were desalted using a C18 ZipTip (P10 size) and 50% acetonitrile/0.1% TFA, followed by washing with 0.1% TFA. Peptides were eluted from the ZipTip with 3 μ l of 60% acetonitrile/0.1% TFA, containing 3.5 mg/ml α -cyano-4-hydroxy cinnamic acid matrix. 0.8- μ l samples were loaded onto the MALDI target plate. Internal calibrants (1 fmol bradykinin, 2 fmols ACTH^{18–39}) were added with the matrix. Peptide identification was performed on an Applied Biosystems (AB) model 4800 MALDI-TOF mass spectrometer. Reflectron mass spectrometry analysis summed 1,250 laser shots to generate each peptide fingerprint map, and the spectra were internally calibrated using a bradykinin internal standard. Masses were selected by the AB 4000 Series Explorer software (v3.0) for tandem mass spectrometry (MS/MS) acquisition. MS/MS was performed first on the masses with the highest intensity to ensure that several MS/MS spectra of high quality were obtained before the MALDI spot was depleted. Up to 10 MS/MS spectra were acquired and 10,000 laser shots were combined for each MS/MS spectrum. Mass spectrum data were collected using Xcalibur mass spectrometry acquisition software, and raw data were analyzed with the MASCOT Daemon batch processing software, the MASCOT Distiller, and the MASCOT search engine algorithm.

ChIP analysis. Ficoll-purified human PBMCs were treated with 1% formaldehyde and washed and lysed in the presence of inhibitors, and chromatin fragments were prepared by MNase digestion prior to immunoprecipitation using the Thermo Scientific ChIP Kit and the manufacturer's protocol. Briefly, aliquots were incubated with 2 μ g anti-ICBP90 (sc-98817, Santa Cruz Biotechnology) or control IgG, followed by addition of 20 μ l of Protein A/G plus Agarose, and incubated under constant agitation for 1 hour. After extensive washing, the DNA-protein-antibody complexes were eluted from the agarose beads with 150 μ l of 0.1 M NaHCO₃/1% SDS. Following the addition of 0.2 M NaCl, all samples, including input, were incubated for 4 hours at 65°C with shaking to revert cross-linking. After treatment with 10 μ M RNAase and digestion with 40 μ M proteinase-K, the immunoprecipitated DNA was recovered using a DNA clean-up column. The following ChIP-grade antibodies were used: rabbit anti-ICBP90 (sc-98817, Sant Cruz Biotechnology), mouse anti-RNApol II (1862243, Thermo Scientific), and rabbit IgG (1862244, Thermo Scientific). Immunoprecipitated DNA was quantified by qPCR (5 minutes at 95°C, 35 cycles at 95°C for 30 seconds and 60°C for 30 seconds) using the iQ5 Sequence Detection System and the Power SYBR Green PCR Master Mix (Bio-Rad). A melting curve analysis was performed to discriminate between specific and nonspecific PCR products. The relative amount of *MIF* promoter DNA (123-bp amplicon encompassing the CATT repeat region) was determined using the following primers: *MIF* forward 5'-TCTTCCTGCTATGTCATG-3'; *MIF* reverse 5'-AATGGTAAACTCGGGGAC-3'. Data were normalized by input control DNA and expressed with respect to those of control IgG (used as calibrator). To confirm ICBP90 occupancy of the *MIF* promoter, the PCR amplicon derived from the anti-ICBP90 immunoprecipitated DNA was subcloned into the pTA2 vector and the CATT-containing *MIF* promoter sequence was confirmed by DNA sequencing.

ICBP90 cloning and expression. A genomic sequence from GenBank (NM_001048201.1) was used for DNA amplification to produce a full-length human ICBP90 cDNA clone in the pCMV7.1 expression vector (Sigma-Aldrich). Construction fidelity was confirmed by DNA sequencing, and TOP10 cells were (Invitrogen) transformed

for plasmid propagation. An ICBP90 cDNA clone in the pSG5 vector was provided by Christian Bronner (CNRS UMR 7213 Laboratoire de Biophotonique et Pharmacologie, Faculté de Pharmacie, Université de Strasbourg, Strasbourg, France).

EMSAs. Nuclear extracts from human THP-1 monocytes were analyzed with the LightShift Chemiluminescent EMSA Kit (Thermo Scientific). Nuclear extracts (2 μ g) were incubated at 4°C in 2 μ l of $\times 10$ binding buffer, 1 μ l of 50 ng/ μ l poly(dI-dC), 11 μ l ddH₂O, and anti-ICBP90 or control IgG. A biotin-labeled *MIF* promoter oligonucleotide containing 5'CATT₈ (–865 to –752, 20 fmol) was added to the reaction mixture with or without unlabeled excess 5'CATT₈ or 5'CATT₀ oligonucleotides (4 pmol) and incubated for 20 minutes at 22°C. Samples were electrophoresed at room temperature using 6% (w/v) nondenaturing polyacrylamide gels prior to transfer onto nylon membranes for chemiluminescence detection.

Transfection, *MIF* expression, and real-time qPCR studies. *MIF* –794 CATT_{5–8}-dependent transcription was analyzed using 4 corresponding *MIF* promoter/luciferase reporter plasmids and an isologous *MIF* –794 CATT₀ plasmid control as described previously (9). Lipofectamine 2000 reagent was used for transient transfection of adherent cell lines (Invitrogen), and an Amaxa nucleofactor was employed for suspension cell cultures. Typically, 1 μ g of each *MIF* reporter plasmid, a β -actin Renilla luciferase plasmid, and shRNA-expressing plasmid was used per transfection; the shRNAs included ICBP90 (GI333964), Pit-1 (TG310279), HBP1 (TL312507), or control vector (TR30007) (all from Origene). In selected experiments, the transfected cells were stimulated with the TLR agonists (Pam3CSK4, LPS, flagellin, double-stranded polyI:C, CpG DNA) or PMA for an additional 6 to 8 hours of culture prior to measurement of promoter activity. Studies with primary human PBMCs used RPMI-5HS medium (RPMI 1640 plus 5% human AB serum), nucleofection technology (Amaxa), and the manufacturer's guidelines. Luciferase assays were measured using a TD-20/20 luminometer (Turner Designs) and the Dual-Luciferase Reporter System (Promega), and signals normalized in relation to the internal Renilla luciferase activity. Each transfection experiment was performed in triplicate wells and repeated at least twice.

For real-time PCR, RNA was extracted using the RNeasy Extraction Kit (Qiagen) and cDNA was synthesized from 1 μ g RNA (iScript cDNA Synthesis Kit, Bio-Rad). Real-time PCR was carried out with the iQ SYBR Green System (Bio-Rad) and nucleotide primers for ICBP90 (5'-ATGTGGATCCAGGTTCCGGA-3' and 5'-GAACAGCTCCTGGATCTT-3') and for selected cytokines (30). The emitted fluorescence for each reaction was measured during the annealing/extension phase, and relative quantity values were calculated by the standard curve method. The quantity value of GAPDH or 18S in each sample was used as a normalizing control. Differences were evaluated by nonparametric testing using the Mann-Whitney *U* test.

Protein quantification. The release of TNF- α , IL-1 β , IL-6, IL-8, and MCP-1 into cell culture supernatants was determined by the Bio-plex PRO Luminex assay method (Bio-Rad). Immunoreactive *MIF* was measured by specific ELISA, as described in Sreih et al. (12). For Western blotting, equal amounts of total protein were resolved by 10% SDS-polyacrylamide gel electrophoresis and transferred onto nitrocellulose membranes, and nonspecific binding was blocked by standard protocols. The membranes were incubated overnight with anti-ICBP90 (1:1,000), and the antibody-antigen complexes were detected using an HRP-coupled anti-rabbit secondary antibody (1:2,000) and

ECL detection (Pierce). Films were densitometrically analyzed using NIH ImageJ (version 1.62f).

Transcriptome and tissue expression analysis. Total RNA from early-passage rheumatoid synovial fibroblasts (3 early-passage lines per experimental group) was isolated using RNeasy miniprep columns (Qiagen), and labeling and hybridization were performed with the Genisphere Array 900 Expression Array Detection Kit according to the manufacturer's protocol. The OMM25K oligonucleotide gene array set (18,000 genes) was used (http://support.illumina.com/array/array_kits/humanht-12_v4_expression_beadchip_kit.html) and the cDNA probe and the fluorescent 3DNA reagent were hybridized to the microarray in succession using an Advantix Slide Booster hybridization station. The hybridized slides were scanned with a Gene-Pix 4000 scanner (Axon Instruments), and raw data were analyzed with GenePix 5.0 analysis software. Hierarchical clustering analysis was performed using GeneSpringGX 7.3 (Agilent Technologies) to reveal relationships among the different experimental conditions. Pearson correlation was used to measure the similarity of the expression levels. Responsive genes were extracted from an unsupervised, full transcriptional profile analysis by a combination of statistical testing of absolute and relative changes in expression across the different experimental conditions and a permutation-based test to estimate false discovery. Statistical analysis among experimental groups was performed using the Student's *t* test, with a FDR of less than 0.05 and a fold change of more than 1.5 considered as differential expression. Original data were deposited at the International MIF Consortium website (<http://imc.isd-muc.de/>) under filename MIF:ICBP90 Study.

A previously collected human synovial tissue registry, comprising samples obtained in accord with an IRB-approved protocol for subjects undergoing arthroplasty and/or synovectomy and fulfilling the American College of Rheumatology criteria for disease (57, 58), was accessed for comparative mRNA expression analysis. Synovial samples were processed for expression analysis on GeneChip Human Genome U133 Plus 2 Affymetrix arrays, and the accessed data are in GEO data sets GSE48780 and GSE7669.

Statistics. GraphPad Prism software was used for statistical analysis. Results are expressed as mean \pm SD. The Student's *t* test and approximate calculation of normal distribution were used to study the difference between groups, with all comparisons being 2 tailed. One-way ANOVA with subsequent Tukey's test for multiple comparisons was used for comparing ICBP90 knockdown shRNA with the corresponding control shRNA (Figure 3). One-way ANOVA for repeated measurements followed by Dunnett's test was used for comparing the two knockdown groups with the control group at individual time points (Figure 5). Pearson correlation was used to measure the similarity of expression levels in the transcriptome analysis. A *P* value less than 0.05 was considered statistically significant.

Study approval. The use of discarded surgical specimens from arthroplasties for the isolation of synovial fibroblasts and the drawing of peripheral blood for monocyte cultivation were approved by the Yale Human Investigations Committee. Informed consent was obtained for the procurement and analysis of these specimens.

Author contributions

JY, LL, and RB designed research. JY, WF, JZ, YZ, and XD performed experiments. MS, XY, PL, and RB analyzed data. JY and RB wrote the paper.

Acknowledgments

Gratitude is expressed for support from the NIH (AI042310, AR049610, AR050498) (to R. Bucala) and T32 HL007778 (to M. Sauler), the Alliance for Lupus Research (to R. Bucala), the Flight Attendant Medical Research Institute CIA82384 (to P. Lee), and the National Natural Scientific Foundation of China (81000225, 81572078) (to J. Yao).

Address correspondence to: Richard Bucala, Yale University School of Medicine, TAC S521, PO Box 208031, 300 Cedar Street, New Haven, Connecticut 06520-8031, USA. Phone: 203.785.2453; E-mail: Richard.Bucala@Yale.edu.

- Calandra T, Roger T. Macrophage migration inhibitory factor: a regulator of innate immunity. *Nat Rev Immunol*. 2003;3(10):791-800.
- Morand EF, Leech M, Bernhagen J. MIF: a new cytokine link between rheumatoid arthritis and atherosclerosis. *Nat Rev Drug Discov*. 2006;5(5):399-410.
- Calandra T, et al. MIF as a glucocorticoid-induced modulator of cytokine production. *Nature*. 1995;377(6544):68-71.
- Mitchell RA, et al. Macrophage migration inhibitory factor (MIF) sustains macrophage proinflammatory function by inhibiting p53: regulatory role in the innate immune response. *Proc Natl Acad Sci U S A*. 2002;99(1):345-350.
- Roger T, David J, Glauser MP, Calandra T. MIF regulates innate immune responses through modulation of Toll-like receptor 4. *Nature*. 2001;414(6866):920-924.
- Leng L, et al. MIF signal transduction initiated by binding to CD74. *J Exp Med*. 2003;197(11):1467-1476.
- Shi X, et al. CD44 is the signaling component of the MIF-CD74 receptor complex. *Immunity*. 2006;25(4):595-606.
- Bernhagen J, et al. MIF is a noncognate ligand of CXC chemokine receptors in inflammatory and atherogenic cell recruitment. *Nat Med*. 2007;13(5):587-596.
- Baugh JA, et al. A functional promoter polymorphism in the macrophage migration inhibitory factor (MIF) gene associated with disease severity in rheumatoid arthritis. *Genes Immun*. 2002;3(3):170-176.
- Radstake TRDJ, et al. Correlation of rheumatoid arthritis severity with the genetic functional variants and circulating levels of macrophage migration inhibitory factor. *Arthritis Rheum*. 2005;52(10):3020-3029.
- Wu SP, et al. Macrophage migration inhibitory factor promoter polymorphisms and the clinical expression of scleroderma. *Arthritis Rheum*. 2006;54(11):3661-3669.
- Sreih AG, et al. Dual effect of MIF gene on the development and the severity of human systemic lupus erythematosus. *Arthritis Rheum*. 2011;63(12):3942-3951.
- Renner P, et al. A functional microsatellite of the macrophage migration inhibitory factor gene associated with meningococcal disease. *FASEB J*. 2011;26(2):907-916.
- Meyer-Siegler KL, et al. Macrophage migration inhibitory factor (MIF) gene polymorphisms are associated with increased prostate cancer incidence. *Genes Immun*. 2007;8(8):646-652.
- Grigorenko EL, et al. Macrophage migration inhibitory factor and autism spectrum disorders. *Pediatrics*. 2008;122(2):E438-EE45.
- Bozza M, et al. Targeted disruption of migration inhibitory factor gene reveals its critical role in sepsis. *J Exp Med*. 1999;189(2):341-346.
- Fingerle-Rowson G, et al. The p53-dependent effects of macrophage migration inhibitory factor revealed by gene targeting. *Proc Natl Acad Sci U S A*. 2003;100(16):9354-9359.
- Hoi AY, et al. Macrophage migration inhibitory factor deficiency attenuates macrophage recruitment, glomerulonephritis, and lethality in MRL/lpr mice. *J Immunol*. 2006;177(8):5687-5696.
- Kerschbaumer RJ, et al. Inhibition of MIF by fully human antibodies correlates with their specificity for the β -sheet structure of MIF. *J Biol Chem*.

- 2012;287(10):7446–7455.
20. Cohen LE, Wondisford FE, Radovick S. Role of Pit-1 in the gene expression of growth hormone, prolactin, and thyrotropin. *Endocrinol Metab Clin North Am.* 1996;25(3):523–540.
 21. Bernhagen J, et al. MIF is a pituitary-derived cytokine that potentiates lethal endotoxaemia. *Nature.* 1993;365(6448):756–759.
 22. Nishino T, Bernhagen J, Shiiki H, Calandra T, Dohi K, Bucala R. Localization of MIF to secretory granules within the corticotrophic and thyrotrophic cells of the pituitary gland. *Mol Med.* 1995;1(7):781–788.
 23. Petrovsky N, Socha L, Silva D, Grossman AB, Metz C, Bucala R. Macrophage migration inhibitory factor exhibits a pronounced circadian rhythm relevant to its role as a glucocorticoid counter-regulator. *Immunol Cell Biol.* 2003;81(2):137–143.
 24. Baugh JA, Gantier M, Li L, Byrne A, Buckley A, Donnelly SC. Dual regulation of macrophage migration inhibitory factor (MIF) expression in hypoxia by CREB and HIF-1. *Biochem Biophys Res Commun.* 2006;347(4):895–903.
 25. Elsby LA, Donn R, Aloufi Z, Green LM, Beaulieu E, Ray DW. Hypoxia and glucocorticoid signaling converge to regulate MIF gene expression. *Arthritis Rheum.* 2009;60(8):2220–2231.
 26. Leng L, et al. Glucocorticoid-induced MIF expression by human CEM T cells. *Cytokine.* 2009;48(3):177–185.
 27. Mousli M, et al. ICBP90 belongs to a new family of proteins with an expression that is deregulated in cancer cells. *Br J Cancer.* 2003;89(1):120–127.
 28. Calandra T, Bernhagen J, Mitchell RA, Bucala R. The macrophage is an important and previously unrecognized source of macrophage migration inhibitory factor. *J Exp Med.* 1994;179(6):1895–1902.
 29. Trotzier MA, et al. Phosphorylation of ICBP90 by protein kinase A enhances topoisomerase II α expression. *Biochem Biophys Res Commun.* 2004;319(2):590–595.
 30. McDevitt MA, et al. A critical role for the host mediator macrophage migration inhibitory factor in the pathogenesis of malarial anemia. *J Exp Med.* 2006;203(5):1185–1196.
 31. Das R, et al. Macrophage Migration Inhibitory Factor (MIF) is a critical mediator of the innate immune response to Mycobacterium tuberculosis. *Proc Natl Acad Sci U S A.* 2013;110(32):E2997–E3006.
 32. Assuncao-Miranda I, et al. Contribution of macrophage migration inhibitory factor to the pathogenesis of dengue virus infection. *FASEB J.* 2010;24(1):218–228.
 33. Foote A, Briganti EM, Kipen Y, Santos L, Leech M, Morand EF. Macrophage migration inhibitory factor in Systemic Lupus Erythematosus. *J Rheumatol.* 2004;31(2):268–273.
 34. Atsumi T, et al. The proinflammatory cytokine MIF regulates glucose metabolism during systemic inflammation. *J Immunol.* 2007;179(8):5399–5406.
 35. Bacher M, et al. An essential regulatory role for macrophage migration inhibitory factor in T-cell activation. *Proc Natl Acad Sci U S A.* 1996;93(15):7849–7854.
 36. Mitchell RA, Metz CN, Peng T, Bucala R. Sustained mitogen-activated protein kinase (MAPK) and cytoplasmic phospholipase A2 activation by macrophage migration inhibitory factor (MIF). Regulatory role in cell proliferation and glucocorticoid action. *J Biol Chem.* 1999;274(25):18100–18106.
 37. Leech M, et al. Regulation of p53 by macrophage migration inhibitory factor in inflammatory arthritis. *Arthritis Rheum.* 2003;48(7):1881–1889.
 38. Lacey D, et al. Control of fibroblast-like synoviocyte proliferation by macrophage migration inhibitory factor. *Arthritis Rheum.* 2003;48(1):103–109.
 39. Bucala R, Ritchlin C, Winchester R, Cerami A. Constitutive production of inflammatory and mitogenic cytokines by rheumatoid synovial fibroblasts. *J Exp Med.* 1991;173(3):569–574.
 40. Leng L, et al. A small-molecule macrophage migration inhibitory factor antagonist protects against glomerulonephritis in lupus-prone NZB/NZW F1 and MRL/lpr mice. *J Immunol.* 2011;186(1):527–538.
 41. Verschuren L, et al. MIF deficiency reduces chronic inflammation in white adipose tissue and impairs the development of insulin resistance, glucose intolerance, and associated atherosclerotic disease. *Circ Res.* 2009;105(1):99–107.
 42. Koch AE, et al. Synovial tissue macrophage as a source of the chemotactic cytokine IL-8. *J Immunol.* 1991;147(7):2187–2195.
 43. Morand EF, Leech M, Weedon H, Metz C, Bucala R, Smith MD. Macrophage migration inhibitory factor in rheumatoid arthritis: clinical correlations. *Rheumatology (Oxford).* 2002;41(5):558–562.
 44. Leech M, et al. Macrophage migration inhibitory factor (MIF) in rheumatoid arthritis. *Arthritis Rheum.* 1999;42(8):1601–1608.
 45. Awandare GA, et al. MIF promoter polymorphisms and susceptibility to severe malarial anemia. *J Infect Dis.* 2009;200(4):629–637.
 46. Zhong XB, et al. Simultaneous detection of microsatellite repeats and SNPs in the macrophage migration inhibitory factor (MIF) gene by thin-film biosensor chips and application to rural field studies. *Nucleic Acids Res.* 2005;33(13):121–129.
 47. Tien AL, et al. UHRF1 depletion causes a G2/M arrest, activation of DNA damage response and apoptosis. *Biochem J.* 2011;435(1):175–185.
 48. Nemaajerova A, Mena P, Fingerle-Rowson G, Moll UM, Petrenko O. Impaired DNA damage checkpoint response in MIF-deficient mice. *EMBO J.* 2007;26(4):987–997.
 49. Das R, et al. Functional polymorphisms in the gene encoding macrophage migration inhibitory factor are associated with Gram-negative bacteremia in older adults. *J Infect Dis.* 2014;209(5):764–768.
 50. Kawai T, Akira S. TLR signaling. *Semin Immunol.* 2007;19(1):24–32.
 51. Katsuura S, et al. High-throughput screening of brief naturalistic stress-responsive cytokines in university students taking examinations. *Int J Psychophysiol.* 2010;77(2):135–140.
 52. Bucala R, Donnelly SC. Macrophage migration inhibitory factor: A probable link between inflammation and cancer. *Immunity.* 2007;26(3):281–285.
 53. Hagemann T, Robinson SC, Thompson RG, Charles K, Kulbe H, Balkwill FR. Ovarian cancer cell-derived migration inhibitory factor enhances tumor growth, progression, and angiogenesis. *Mol Cancer Ther.* 2007;6(7):1993–2002.
 54. Arisawa T, et al. Functional promoter polymorphisms of the macrophage migration inhibitory factor gene in gastric carcinogenesis. *Oncol Rep.* 2008;19(1):223–228.
 55. Alinari L, et al. Combination anti-CD74 (milatuzumab) and anti-CD20 (rituximab) monoclonal antibody therapy has in vitro and in vivo activity in mantle cell lymphoma. *Blood.* 2008;117(17):4530–4541.
 56. Gorg A, Weiss W, Dunn MJ. Current two-dimensional electrophoresis technology for proteomics. *Proteomics.* 2004;4(12):3665–3685.
 57. Sun Y, et al. PILRalpha negatively regulates mouse inflammatory arthritis. *J Immunol.* 2014;193(2):860–870.
 58. Pohlers D, Beyer A, Koczan D, Wilhelm T, Thiesen HJ, Kinne RW. Constitutive upregulation of the transforming growth factor- β pathway in rheumatoid arthritis synovial fibroblasts. *Arthritis Res Ther.* 2007;9(3):R59.