

822 **Supplemental data**

823 **Supplemental Figure 1.**

824 RAGE-binding inhibition with anti-longistatin or anti-RAGE. BSA or RAGE was coated onto wells and
825 treated without or with anti-RAGE (1:100). Longistatin was neutralized without or with anti-longistatin
826 (1:100) and added into the wells. After washing, bound longistatin was detected. $n=3$, $**p<0.01$.

827 **Supplemental Figure 2.**

828 Comparison of longistatin binding with other RAGE ligands. Equal amounts (5 $\mu\text{g/ml}$) of longistatin or
829 each of other RAGE ligands were coated and blocked as indicated. Then, RAGE (2 $\mu\text{g/ml}$) was added
830 and binding was detected with anti-RAGE (1:500). Long, longistatin; CML, CML-BSA; and Gla, Gla-
831 BSA.

832 **Supplemental Figure 3.**

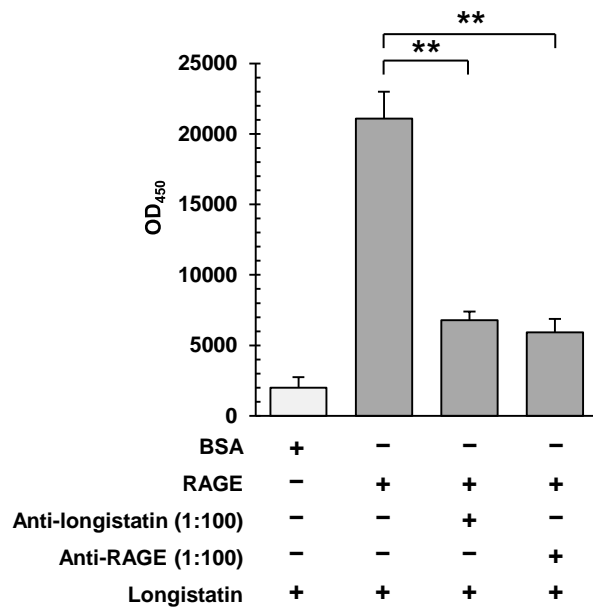
833 Binding of longistatin with the different fractions of HUVECs. HUVECs were cultured and subcellular
834 fractions were harvested. Equal amounts of protein (20 $\mu\text{g/ml}$) were coated and wells were treated with
835 longistatin (4 $\mu\text{g/ml}$) and binding was determined. $n=3$, $*p<0.01$.

836 **Supplemental Figure 4.**

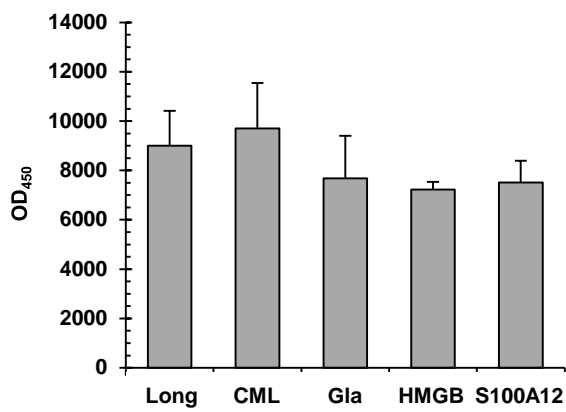
837 Anti-sRAGE inhibits interaction of longistatin with HUVEC lysate. HUVEC whole-cell lysate (20 μg)
838 was coated onto an ELISA plate, and treated with sheep anti-sRAGE at various concentrations (0-1:100).
839 Longistatin was added to the wells and incubated, and bound longistatin was probed.

840 Table S1. List of the PCR primers

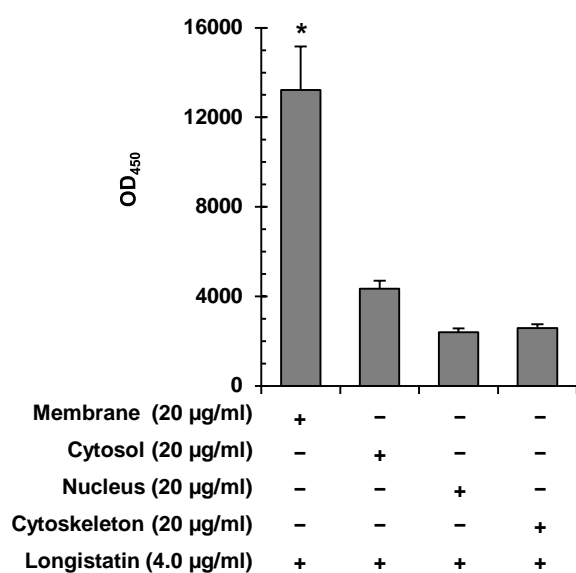
Animal	Gene	Forward primer	Reverse primer
Human	<i>VCAM1</i>	ccc ttg acc ggc tgg aga tt	tgg ggg caa cat tga cat aaa gtg
	<i>ICAM1</i>	cac gcc tcc ctg aac cta tc	atc aga tgc gtg gcc tag tg
	<i>eSelectin</i>	act gac ctg aga cag agg ca	gct tcc gtg gag gtg ttg ta
	<i>β Actin</i>	aaa ctg gaa cgg tga agg tg	aga gaa gtg ggg tgg ctt tt
Mouse	<i>IL-5</i>	aaa ttc ctg tag cgc agg ct	acc ctg atg caa cga aga gg
	<i>TNF-α</i>	acg gca tgg atc tca aag ac	cgg act ccg caa agt cta ag
	<i>Cox2</i>	aag ccg agc acc ttt gga g	att gat ggt ggc tgt ttt ggt ag
	<i>MCP-5</i>	tgc ctc ctg ctc ata gct acc	ctt ctc ctt ggg gtc agc ac
	<i>S100B</i>	agg aca gag gag ggg aat gg	ctc agc ctc acc aag ggc ta
	<i>S100A8</i>	tgg aga agg cct tga gca ac	tgt gag atg cca cac cca ct
	<i>S100A9</i>	agg aca ccc tga cac cct ga	cag cct ttg cca tga ctg tg
	<i>RAGE</i>	gcg agg gaa gga ggt caa gt	ctt ggg tgg gga tca ctg tc
	<i>β Actin</i>	gct aca gct tca cca cca ca	aag gaa ggc tgg aaa aga gc



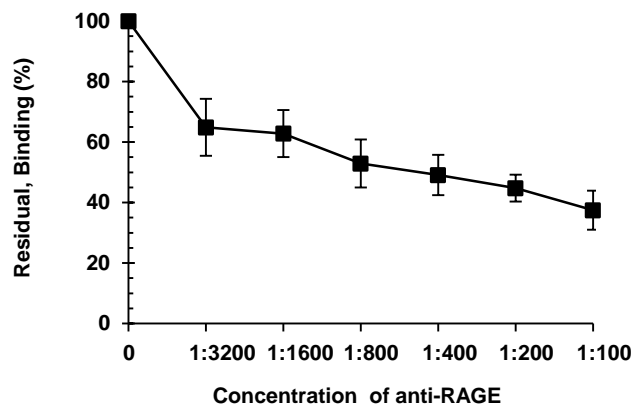
Supplemental Figure 1
74917-RG-RV-2-Revised



Supplemental Figure 2
74917-RG-RV-2-Revised



Supplemental Figure 3
74917-RG-RV-2-Revised



Supplemental Figure 4
74917-RG-RV-2-Revised