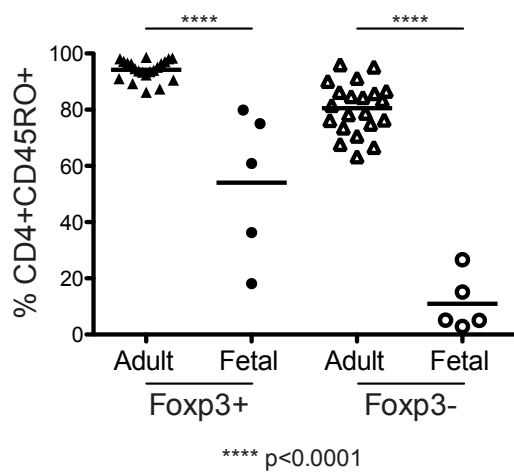
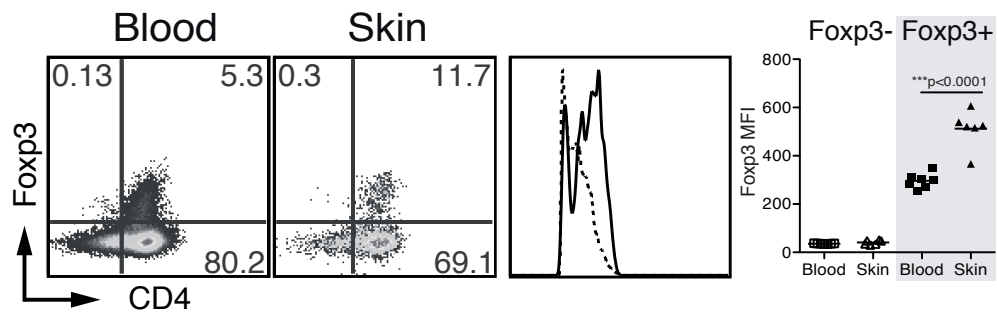


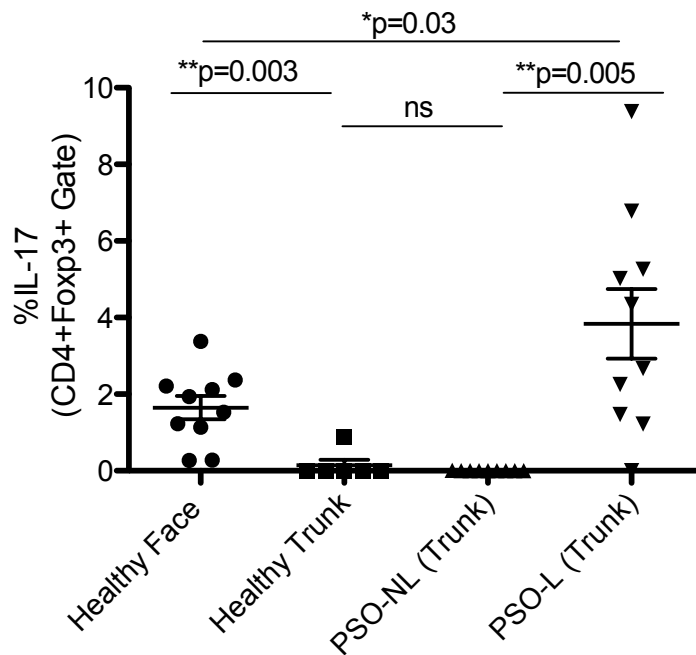
SUPPLEMENTAL DATA



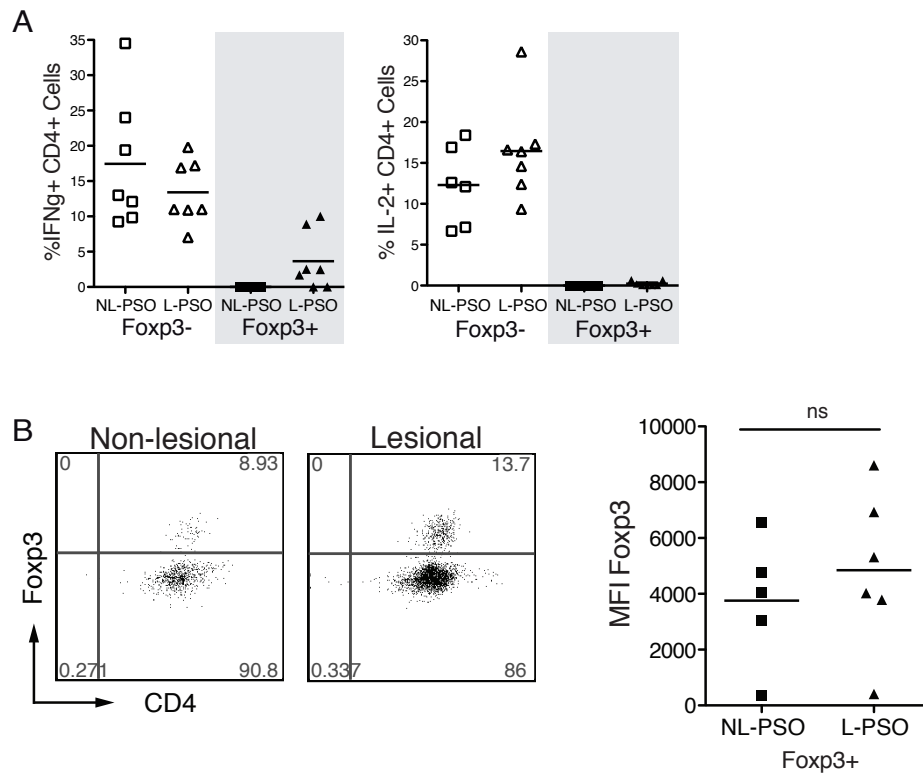
Supplemental Figure 1. Percent of CD45RO⁺ cells on Fxp3⁺ and Fxp3⁻ T cells isolated from adult and fetal human skin. Cells are pre-gated on viable CD3⁺ T cells.



Supplemental Figure 2. Foxp3 Expression in Human Adult Skin and PBMCs. Expression of Foxp3 in viable CD3⁺CD4⁺CD45RO⁺ T cells in PBMCs ('Blood') and skin isolated from healthy adults. Histogram is gated on Foxp3⁺ cells. Results are representative data from >15 independent experiments. p values determined using a two-tailed unpaired Student's t test.

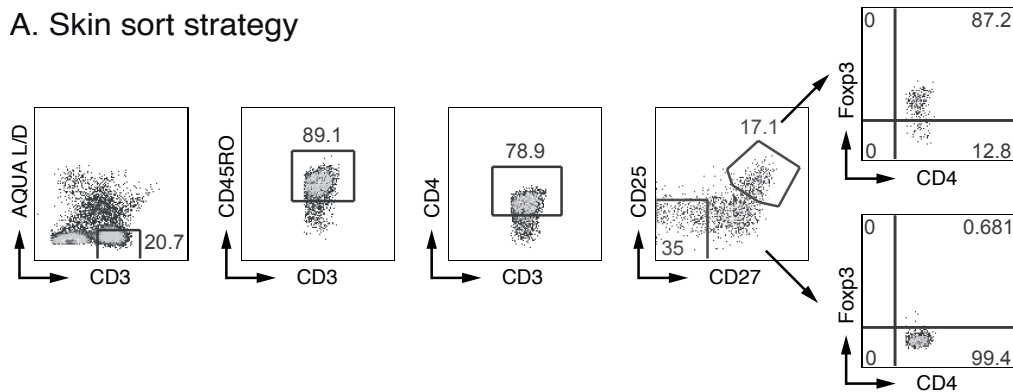


Supplemental Figure 3. Treg production of IL-17 varies with anatomic site. Normal healthy skin was harvested from the face/scalp or trunk in patients without psoriasis (healthy), or from non-lesional (NL) and lesional (L) trunk skin from patients with PSO. Single cell suspensions were stimulated with PMA/Iono, stained for intracellular cytokines (and lineage markers) and analyzed by flow cytometry. *p* values determined using a two-tailed unpaired Student's *t* test.

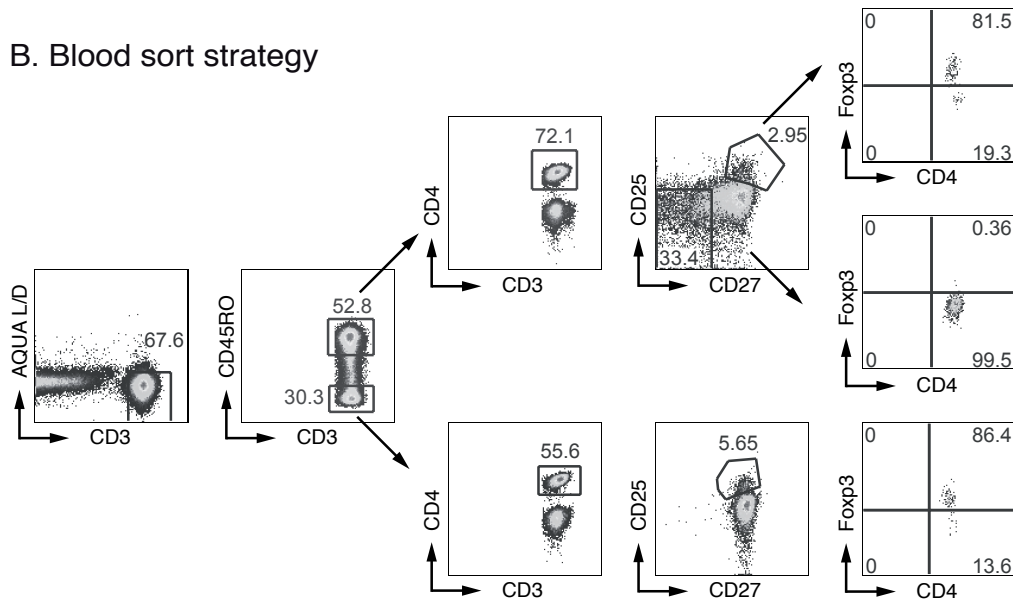


Supplemental Figure 4. Expression of IFN γ , IL-2 and Fxp3 on T cells isolated from lesional and non-lesional skin of psoriasis patients. (A) Intracellular cytokine production from mTreg and mTconv cells in non-lesional (NL) and lesional (L) human skin harvested from patients with active psoriasis (PSO). Cells are pre-gated on viable CD3⁺CD4⁺CD45RO⁺ cells. **(B)** Fxp3 expression on CD4⁺ T cells isolated from non-lesional and lesional skin harvested from patients with active psoriasis. Cells in flow cytometry plots are gated on viable CD3⁺CD45RO⁺ cells and cells in scatter plot are gated on CD3⁺CD45RO⁺Fxp3⁺ cells. MFI, mean fluorescence intensity.

A. Skin sort strategy



B. Blood sort strategy



Supplemental Figure 5. Sorting Strategy to Purify mTregs From Human Skin and Blood For *FOXP3* Methylation Analysis

Cell suspensions were isolated from skin or PBMCs ('Blood') and sorted according to the gating strategy above. The actual percentage of Fcpx3-expressing cells within each sorted population is listed in parentheses under pie charts in Figure 2.