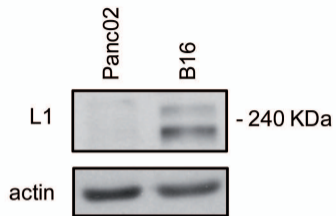
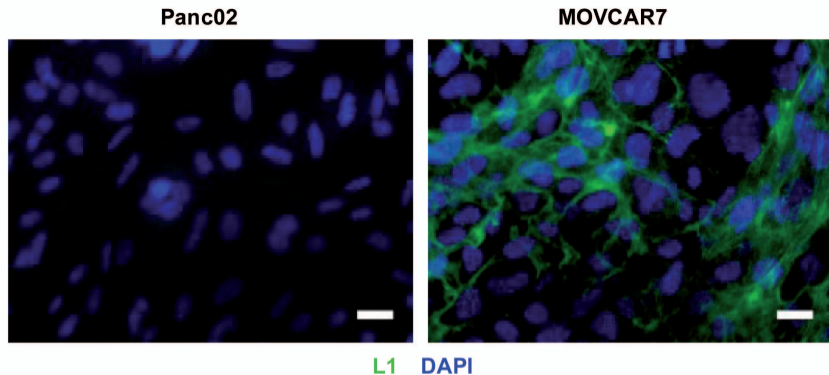
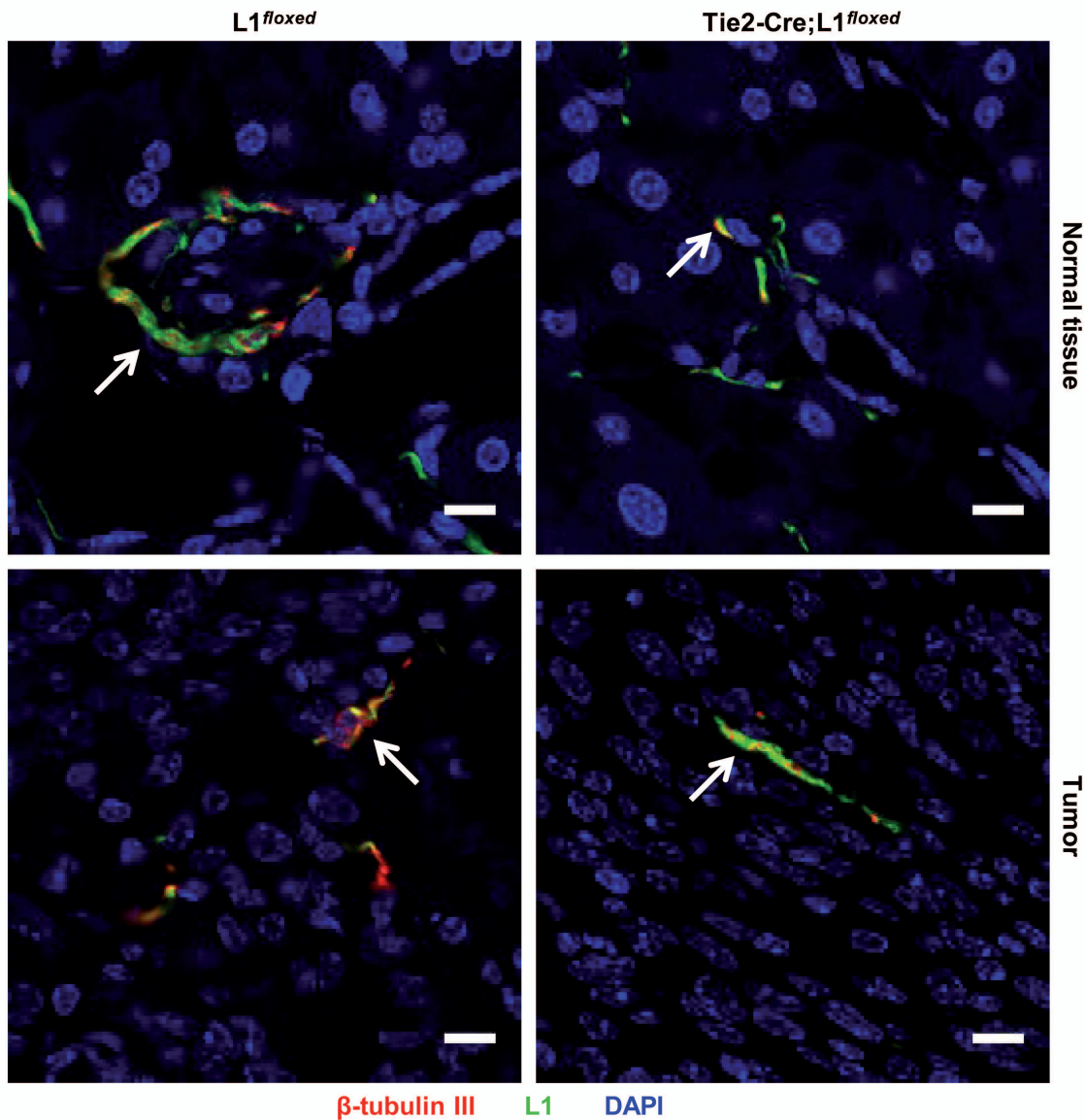
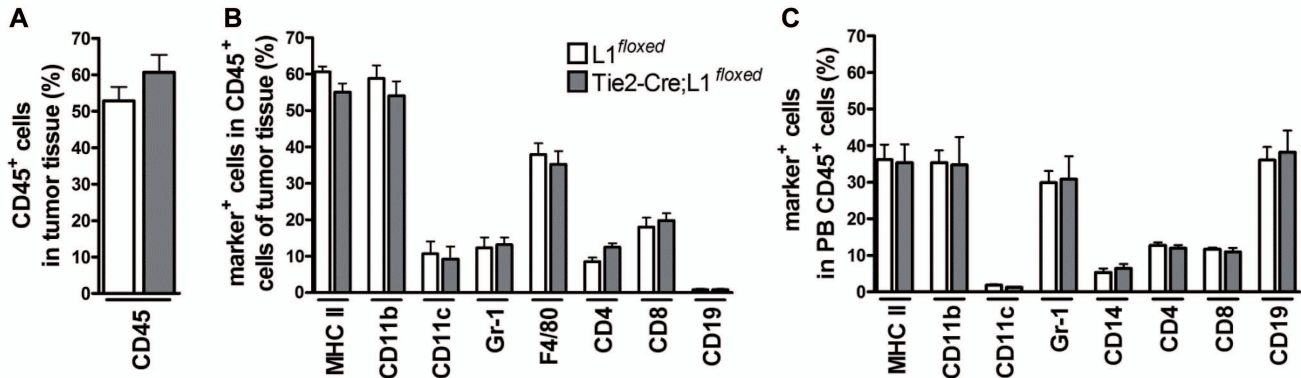


A**B**

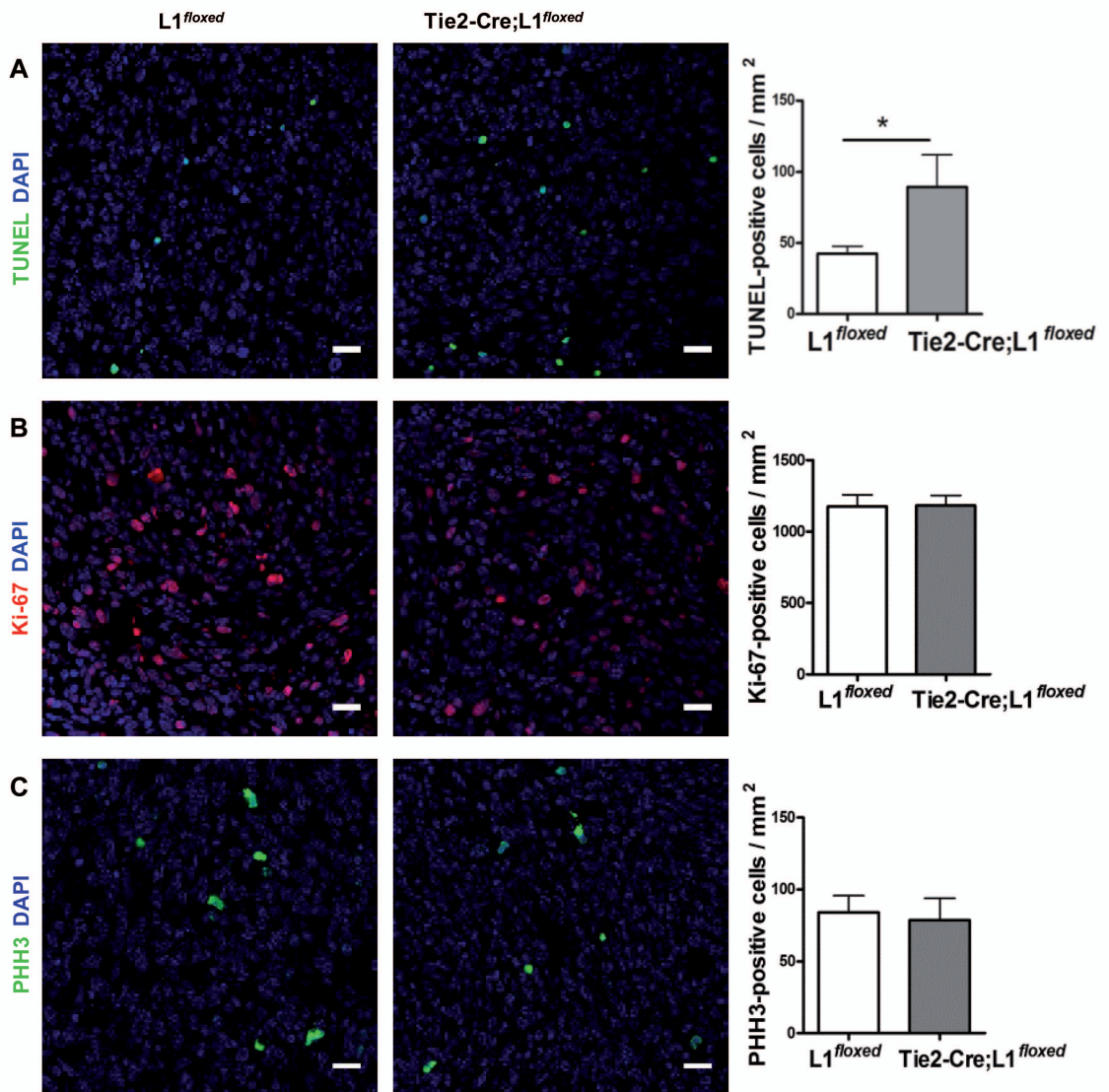
Supplementary Figure S1. L1 is not expressed in Panc02 cells. (A) Immunoblotting analysis of Panc02 and B16 cells for L1. The mouse melanoma cell line B16 served as a positive control. Immunoblotting for actin was performed for loading control. These data were supported by qRT-PCR data revealing that Panc02 cells exhibit no or very low levels of L1 mRNA (not shown). (B) Immunofluorescence staining of Panc02 and MOVCAR7 cells for L1 (green). The mouse ovarian carcinoma cell line MOVCAR7 served as a positive control. Scale bars: 20 μ m.



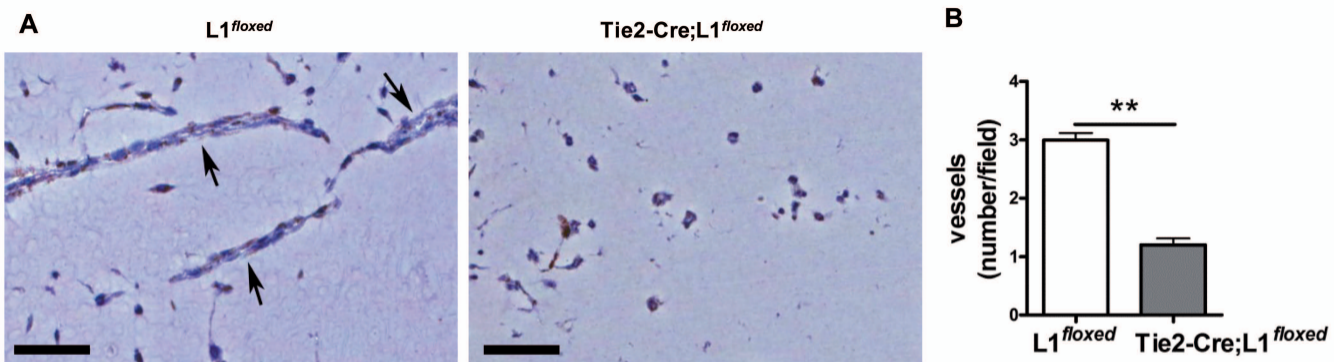
Supplementary Figure S2. The expression of L1 in peripheral nerves is not affected by Tie2-Cre-mediated ablation. Sections of normal pancreas and Panc02 tumors from L1^{flxed} and Tie2-Cre;L1^{flxed} mice were co-stained for L1 (green) and the neuronal marker β-tubulin III (red), followed by confocal analysis. Arrows indicate nerve fibers that co-express L1 and β-tubulin III. Scale bars: 10 μm.



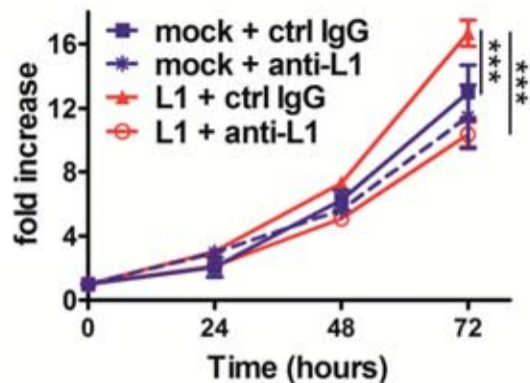
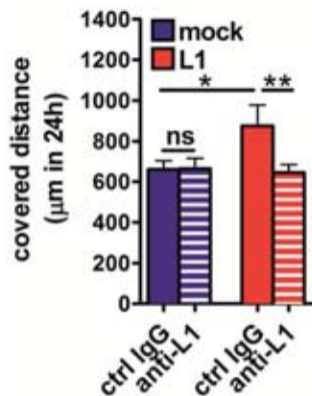
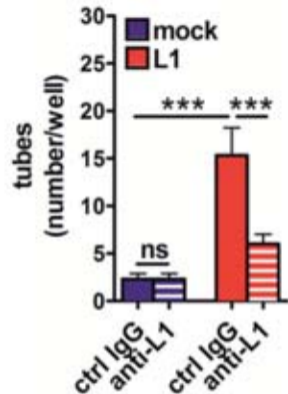
Supplementary Figure S3. The number of tumor-infiltrating immune cells and hematopoiesis are not affected in $Tie2-Cre;L1^{floxed}$ mice. (A) Percentage of CD45⁺ leukocytes in tumor tissue. **(B)** Relative frequency of individual hematopoietic cell subpopulations, identified by lineage-specific markers, in tumor tissue. **(C)** Relative frequency of individual hematopoietic cell subpopulations in peripheral blood. Tumor and blood samples from $L1^{floxed}$ (n=8) and $Tie2-Cre;L1^{floxed}$ mice (n=6) were quantified by FACS analysis.



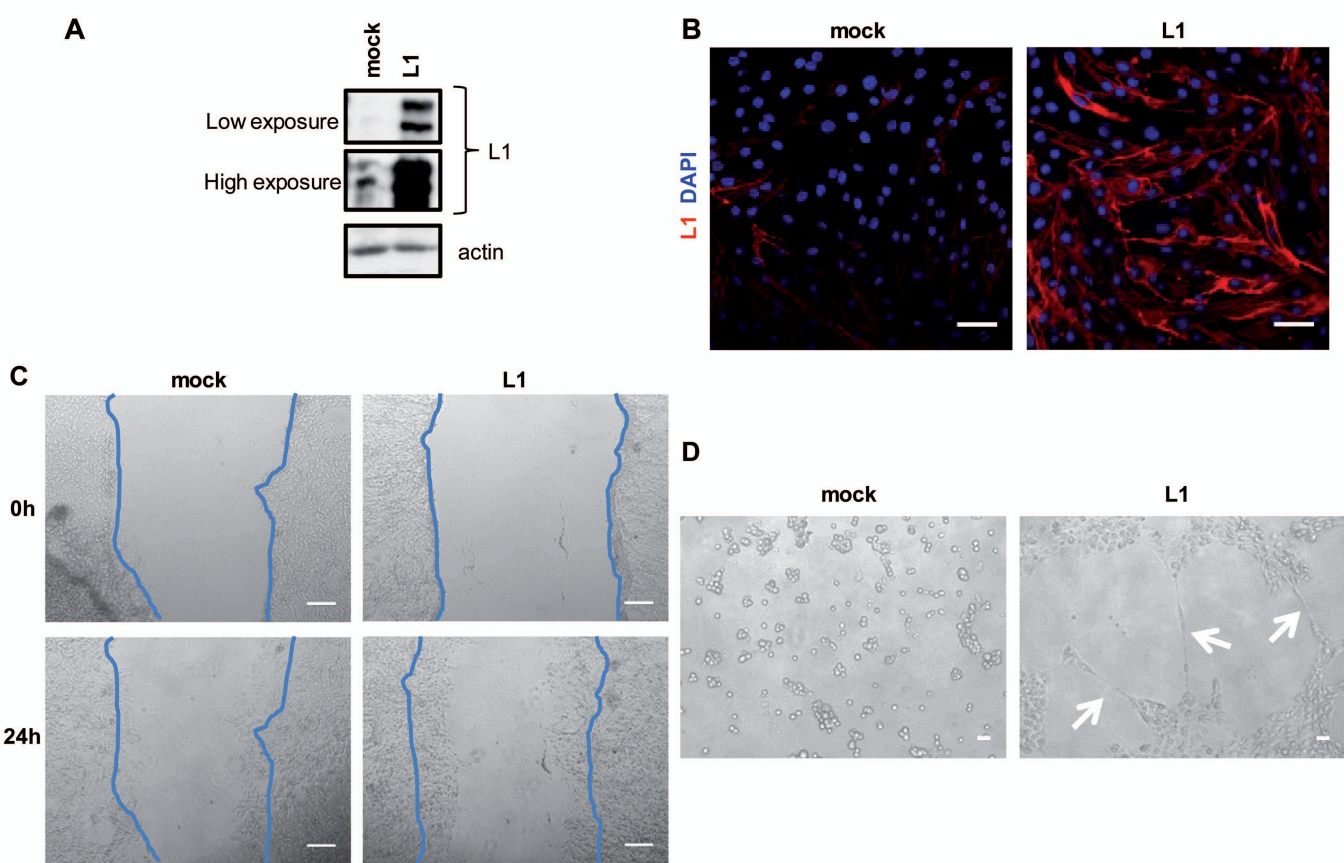
Supplementary Figure S4. Increased apoptosis in Tie2-Cre;L1^{flxed} tumors. Sections of Panc02 tumors from L1^{flxed} (n=5) and Tie2-Cre;L1^{flxed} (n=5) mice were either subjected to apoptosis assay by TUNEL staining (panel A, green) or stained for the proliferating cell markers Ki-67 (panel B, red) and phospho-histone H3 (PHH3) (panel C, green), followed by confocal analysis. Scale bars: 20 μ m. Right panels show the frequency of stained cells expressed as positive cells per mm². * p <0.05.



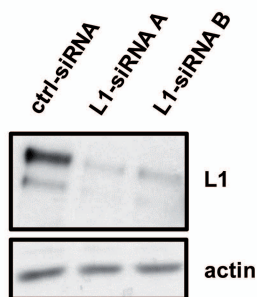
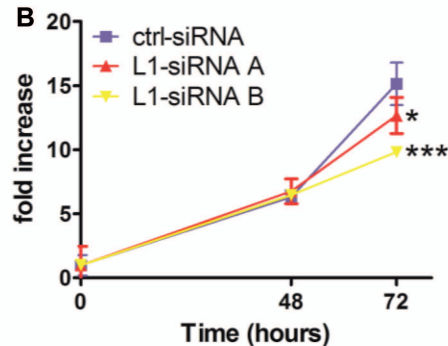
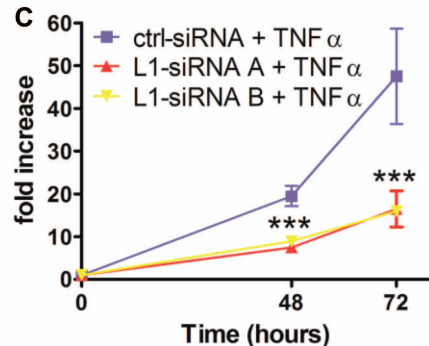
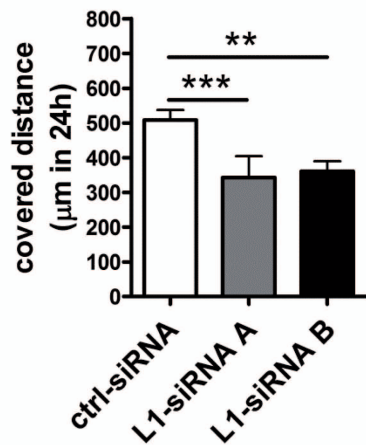
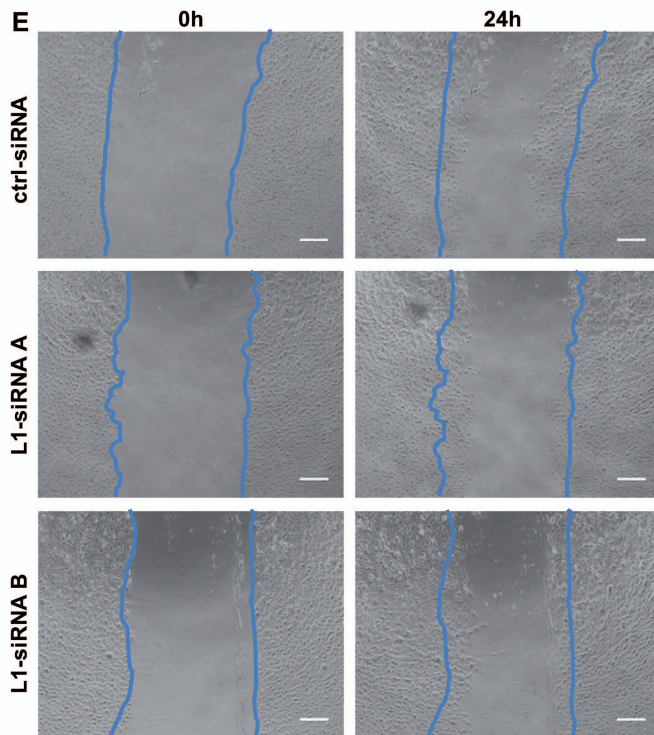
Supplementary Figure S5. Decreased angiogenesis in Tie2-Cre/*L1^{flxed}* mice. (A) A Matrigel plug (0.5 ml) containing 0.5 μ g FGF-2 was implanted s.c. into *L1^{flxed}* or *Tie2-Cre/L1^{flxed}* mice. After ten days, the Matrigel plugs were removed and fixed in 2% paraformaldehyde. Sections were then stained for PECAM-1 (brown) and counterstained with hematoxylin (blue). Arrows indicate capillary-like structures within Matrigel plugs. Scale bars: 50 μ m. (B) Capillaries were counted in five randomly chosen fields (0.8 x 0.4 mm) per plug (n=3). The vascularization of Matrigel plugs in *L1^{flxed}* or *Tie2-Cre/L1^{flxed}* mice was quantified and is expressed as the number of vessel-like structures per microscope field. ** p <0.01.

A**B****C**

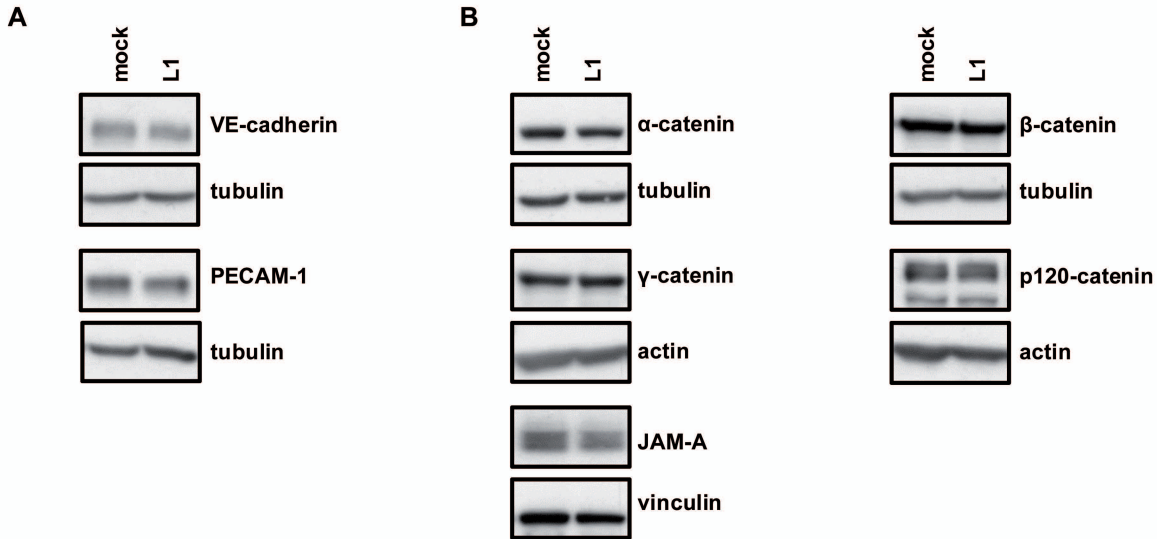
Supplementary Figure S6. Anti-L1 antibody abolishes L1-induced endothelial cell proliferation, migration and tube formation. Mouse lung ECs were transfected either with mouse L1 cDNA (L1) or with the empty vector (mock). Cells were then subjected to proliferation (A), migration (B), and tube formation assays (C), in the presence of either polyclonal anti-mouse L1 antibody or control rabbit IgG (ctrl IgG) at 3 µg/ml. As described in the Results (Figure 4), L1 enhanced EC proliferation, migration and tube formation, and all these effects were reduced by the anti-L1 antibody, confirming its function-blocking activity. * $p < 0.05$; ** $p < 0.01$; *** $p < 0.001$; ns = not significant.



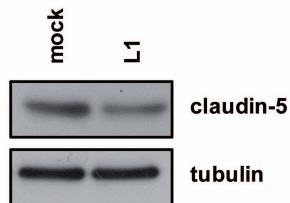
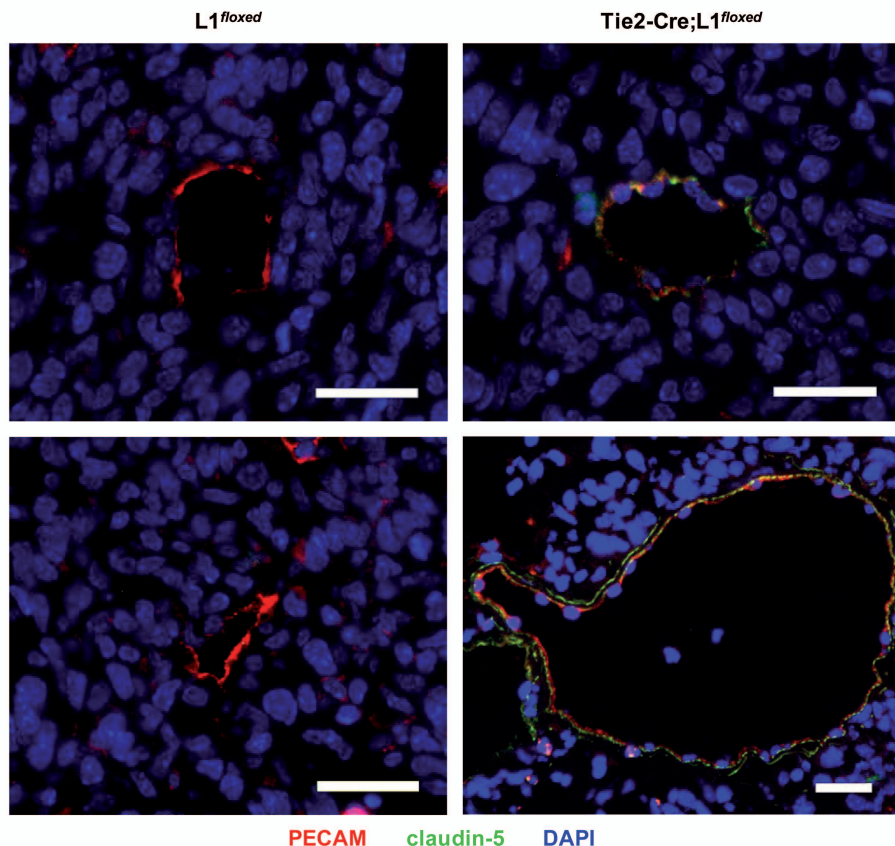
Supplementary Figure S7. Overexpression of L1 in luECs. (A) Immunoblotting analysis for L1 in luECs transfected either with mouse L1 cDNA (*L1*) or with the empty vector (*mock*). Immunoblotting for actin was performed for loading control. (B) Immunofluorescence staining of transfected luECs for L1 (red), which shows the surface localizations of L1 (right panel). Scale bars: 20 μ m. (C) Representative images of cell migration assays on mock- or L1-transfected luECs (see Materials and Methods). Blue lines indicate the edges of the wounded area at time 0. Scale bars: 200 μ m. (D) Representative images of tube formation assays on mock- or L1-transfected luECs (see Materials and Methods). Arrows indicate capillary like structures formed by L1-overexpressing cells. Scale bars: 200 μ m.

A**B****C****D****E**

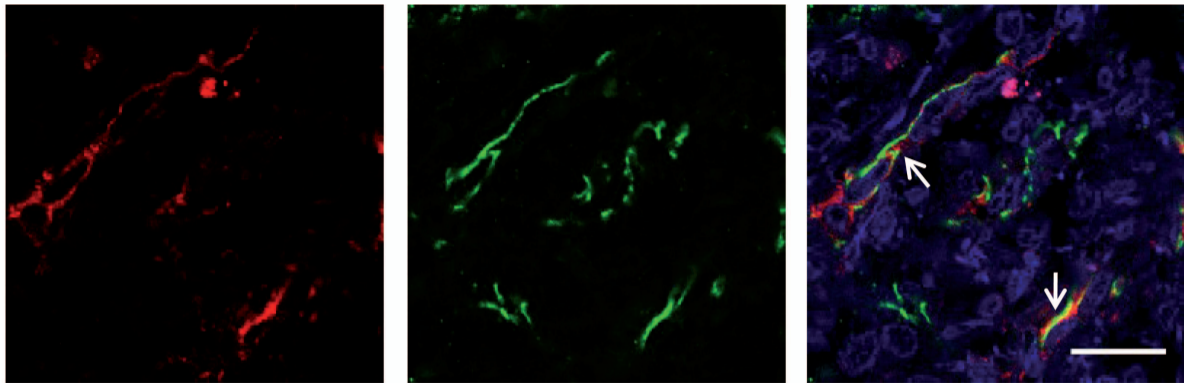
Supplementary Figure S8. Knockdown of L1 in luECs. (A) Immunoblotting analysis for L1 in luECs transfected either with a control (*ctrl*) siRNA or with two different L1 siRNAs (A and B). Immunoblotting for actin served as a loading control. L1 levels were markedly reduced in cells transfected with L1 siRNAs. (B, C) Proliferation curves of luECs transfected either with the two different L1-siRNAs or with a control-siRNA, in the absence (A) or presence (B) of 20 ng/ml mouse TNF α . (D) Control- and L1-siRNA transfected cells were subject to wound healing assays to determine cell migration. Data represent the means \pm SD from a representative experiment performed in triplicate. * $p < 0.05$; ** $p < 0.01$; *** $p < 0.001$. (E) Representative images of wound healing assays. Blue lines indicate the edges of the wounded area at time 0. Scale bars: 200 μm .



Supplementary Figure S9. L1 expression does not affect the levels of specific components of the interendothelial junctions. Immunoblotting analysis of mock and L1-transfected luECs for VE-cadherin and PECAM-1 (**A**) and for α -catenin, β -catenin, γ -catenin, p120-catenin and JAM-A (**B**). Immunoblotting for actin, tubulin or vinculin served as loading controls.

A**B**

Supplementary Figure S10. L1 regulates claudin-5 expression. (A) Immunoblotting analysis for claudin-5 in luECs transfected either with a empty vector (*mock*) or with L1 cDNA (*L1*). Immunoblotting for tubulin served as a loading control. Claudin-5 levels were reduced in cells transfected with L1. (B) Sections of Panc02 tumors from $L1^{flxed}$ and $Tie2-Cre;L1^{flxed}$ mice were co-stained for the vascular marker PECAM-1 (red) and claudin-5 (green). The ablation of endothelial L1 resulted in increased expression of claudin-5 in tumor vessels. Scale bars: 50 μ m.



VE-cadherin L1 DAPI

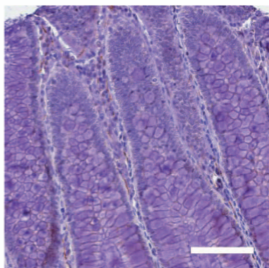
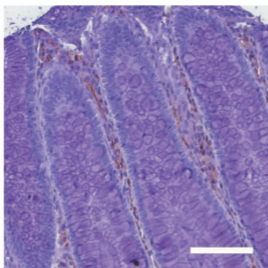
Supplementary Figure S12. L1 is expressed by human PDAC-associated vessels. Representative images of sections from human PDAC tissue co-stained for VE-cadherin (green) and L1 (red) to visualize L1-positive vessels (arrows). Scale bar: 20 μ m.

PECAM-1

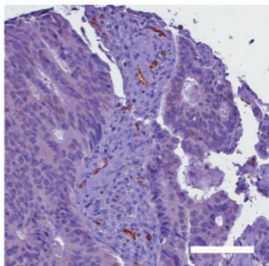
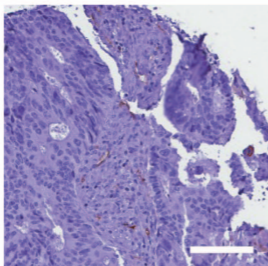
L1

Colon

Normal

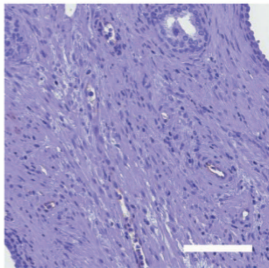
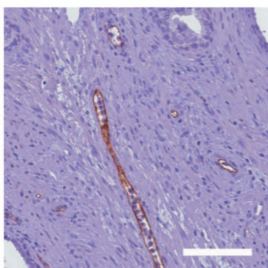


Tumor

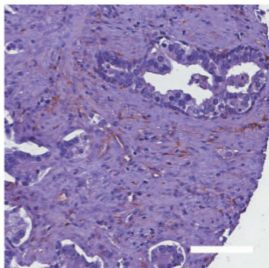
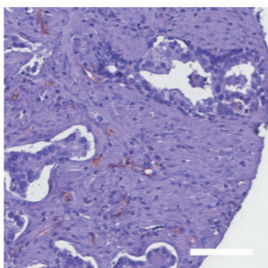


Prostate

Normal



Tumor



Supplementary Figure S13. Vascular L1 is up-regulated in various human tumor types. Tissue microarrays containing different tumor types and their normal tissue counterparts were stained for PECAM-1 and L1. The figure shows examples of normal and cancerous tissue from colon and prostate. Scale bars: 100 μ m.

Supplemental Table 1. Genes regulated by L1 in IECs.

ProbeSet	Symbol	Fold-change	SAM d(i)	(t-s control (Geo	L1 ((Geometric mean - chip intensity)
10605113	L1cam	13.33	-12.667	116.11	1556.84
10502791	Ifi44	11.63	-8.38	194.08	2258.22
10360391	Ifi203	9.09	-8.11	73.65	697.69
10524621	Oasl2	8.33	-8.742	308.45	2580.88
10462621	I830012O16I	6.67	-7.266	157.08	1073.99
10591853	Tbx20	6.67	-9.407	56.61	377.89
10505717	Adamtsl1	6.25	-10.088	132.31	810.96
10490818	Stmn2	6.25	-10.299	44.55	282.96
10492815	Tmem154	6.25	-8.511	59.14	363.65
10488608	Trib3	6.25	-6.622	228.7	1396.81
10371332	Aldh1l2	5.88	-4.193	73.09	438.21
10430174	Apol9a	5.88	-8.023	215.55	1305.02
10375360	Ebf1	5.88	-7.166	98.28	573.45
10462623	Ifit1	5.56	-8.832	676.44	3687.47
10608638	Klra33	5.56	-6.272	28.64	159.58
10425049	Apol9b	5.26	-10.016	216.09	1134.87
10451287	Isg15	5.26	-8.347	90.58	484.56
10427131	Soat2	5.26	-5.096	81.94	431.71
10549222	Bcat1	4.76	-4.912	266.16	1273.24
10541307	Usp18	4.76	-6.924	557.93	2667.21
10483110	Ifih1	4.55	-8.909	180.76	835.71
10600044	Prrg3	4.55	-12.812	58.73	262.64
10384539	Slc1a4	4.55	-6.589	418.04	1860.51
10505734	Adamtsl1	4.35	-6.647	103.24	447.92
10474972	Chac1	4.35	-5.646	982.36	4218.55
10571984	Ddx60	4.35	-5.118	52.53	232.72
10360382	Ifi204	4.35	-4.554	186.9	804.23
10569102	Irf7	4.35	-6.344	243.46	1066.67
10393887	Pycr1	4.35	-7.238	379.7	1618.44
10507500	Slc6a9	4.35	-4.68	407.7	1753.79
10395039	Cmpk2	4.17	-5.614	112.36	463.95
10416505	Kctd4	4.17	-7.698	120.16	494.84
10496580	Gbp3	4.00	-8.638	101.93	413.01
10462618	Ifit3	4.00	-7	1194.35	4834.4
10562905	Atf5	3.85	-7.657	258.28	989.6
10531415	Cxcl10	3.85	-4.404	165.84	636.08
10461423	Fads3	3.85	-7.811	480.82	1828.13
10462613	Ifit2	3.85	-5.232	213.07	823.35
10349138	Serpib1	3.85	-6.276	16.2	63.38
10496592	Gbp2	3.70	-4.576	73.31	273.92
10437224	Mx2	3.70	-5.277	57.23	208.3
10582275	Slc7a5	3.70	-5.847	1430.62	5389.8
10496569	Gbp6	3.57	-6.818	124.78	450.71
10385526	9930111J21F	3.45	-9.58	274.85	952.46
10566583	Gm8995	3.45	-8.251	620.96	2130.31
10385518	Tgtp1	3.45	-4.904	77.21	266.35
10385533	Tgtp1	3.45	-4.512	81.92	285.21

10385513	9930111J21F	3.33	-9.346	286.47	968.49
10607738	Car5b	3.33	-7.961	38.08	126.17
10420488	D14Ertd668e	3.33	-8.837	409.92	1384.85
10599348	Gria3	3.33	-4.498	48.99	162.33
10366881	Ddit3	3.23	-5.087	273.94	873.53
10399710	Rsad2	3.23	-4.655	590.48	1894.21
10473356	Ube2l6	3.23	-6.096	303.9	968.24
10573626	Gpt2	3.13	-8.077	226.45	697.61
10402347	Ifi27l2a	3.13	-5.913	123.5	389.19
10554240	Isg20	3.13	-5.831	277.89	868.38
10434778	Rtp4	3.13	-5.193	973.64	3019.32
10382321	Kcnj2	2.94	-8.778	48.57	142.02
10545672	Mthfd2	2.94	-7.676	957.74	2827.82
10550332	Slc1a5	2.94	-4.05	623.51	1844.39
10546432	Adamts9	2.86	-12.775	302.52	867.75
10360406	Ifi205	2.86	-2.932	137.55	391.33
10499899	Sprr1a	2.86	-9.522	263.77	743.52
10360377	Al607873	2.78	-3.878	542.28	1514.59
10585214	Cryab	2.78	-5.819	198.03	542.69
10391207	Dhx58	2.78	-5.996	358.4	1000.15
10534075	Psph	2.78	-6.688	254.26	712.23
10498024	Slc7a11	2.78	-3.907	1938.95	5357.6
10546450	Adamts9	2.70	-11.539	375.48	1028.5
10462390	Cd274	2.70	-2.895	149.77	407.17
10545130	Gadd45a	2.70	-3.351	182.72	494.53
10525158	Oas1b	2.70	-5.384	135.45	370.25
10519693	Sema3d	2.70	-5.955	36.52	97.82
10433101	Gpr84	2.63	-3.318	295.24	773.86
10566574	Gvin1	2.63	-5.843	1280.38	3332.83
10563338	Ppp1r15a	2.63	-2.812	491.03	1293.88
10544320	1810009J06F	2.56	-5.378	74.21	188.31
10409278	Nfil3	2.56	-4.086	145.32	371.34
10439249	Parp14	2.56	-5.576	221.51	575.06
10493860	Sprr2b	2.56	-4.941	31.86	82.57
10546454	Adamts9	2.50	-11.065	310.74	769.44
10546434	Adamts9	2.50	-10.741	333.93	837.68
10480139	C1ql3	2.50	-5.413	161.1	402.39
10393573	Lgals3bp	2.50	-7.297	933.78	2354.31
10415248	Pck2	2.50	-6.948	892.89	2236.69
10378068	Xaf1	2.50	-5.578	482.41	1206.1
10537561	1810009J06F	2.44	-4.81	70.68	170.72
10381122	Fkbp10	2.44	-7.596	89.73	218.9
10376326	Irgm2	2.44	-5.173	268.87	662.74
10569458	Cars	2.38	-5.855	735.05	1733.02
10438769	Cldn1	2.38	-3.689	27.48	66
10522895	Csn3	2.38	-3.877	47.95	114.14
10496727	Ddah1	2.38	-15.218	168.92	403.14
10420483	Phf11	2.38	-2.763	40.79	97.95
10607484	Ptchd1	2.38	-6.816	78.78	186.62
10350516	Ptgs2	2.38	-3.419	1385.76	3298.27

10354741	Rftn2	2.38	-4.422	123.21	292.63
10455970	BC023105	2.33	-3.847	10.54	24.55
10389207	Ccl5	2.33	-3.114	321.03	754.09
10363173	Gja1	2.33	-4.571	898.54	2097.72
10566571	Gm8979	2.33	-5.885	490.07	1131.17
10566578	Gm8979	2.33	-5.768	613.92	1416.56
10588691	Hyal1	2.33	-5.398	42.09	97.01
10569618	Ano1	2.27	-6.006	157.42	356.4
10345445	Arid5a	2.27	-3.235	285.73	648.52
10561104	Axl	2.27	-4.079	153.02	347.4
10359929	Ddr2	2.27	-2.574	50.88	114.43
10390850	Krt20	2.27	-5.794	302.32	680.07
10358434	Pla2g4a	2.27	-3.835	851.07	1949.74
10347948	Sp100	2.27	-6.604	399.99	917.88
10427772	Tars	2.27	-6.313	504.37	1139.44
10571788	Vegfc	2.27	-4.732	244.96	556.63
10361091	Atf3	2.22	-4.265	1055.96	2335.28
10424559	Khdrbs3	2.22	-3.877	67.13	149.98
10471129	Ncs1	2.22	-10.089	178.28	393.05
10448004	Phf10	2.22	-5.689	1398.33	3086.97
10432236	Rnd1	2.22	-4.348	166.8	369.22
10383233	Rnf213	2.22	-5.016	828.02	1830.99
10535852	Slc7a1	2.22	-5.389	980.63	2186.65
10367224	Stat2	2.22	-5.03	605.94	1352.25
10435497	Stfa2l1	2.22	-8.304	48.54	107.4
10546430	Adamts9	2.17	-7.241	746.33	1630.69
10467470	Aldh18a1	2.17	-5.737	1811.36	3922.6
10431935	Amigo2	2.17	-6.895	536.43	1170.41
10485405	Cd44	2.17	-5.755	175.71	379.38
10568369	Cox6a2	2.17	-3.465	148.91	321.28
10403727	Gli3	2.17	-4.482	70.03	150.95
10373157	Mars	2.17	-6.854	1236.45	2661.61
10367641	Mthfd1l	2.17	-5.965	419.94	920.71
10544133	Parp12	2.17	-6.023	841.4	1845.3
10383214	Rnf213	2.17	-5.574	1210.24	2655.88
10485674	2700007P211	2.13	-5.828	1174.84	2486.95
10443885	Cyp4f40	2.13	-2.806	119.64	255.9
10455961	Iigp1	2.13	-3.631	20.07	42.59
10458607	Lars	2.13	-5.434	1062.51	2262.24
10603087	Pir	2.13	-9.105	277.47	590.05
10466410	Psat1	2.13	-6.583	1800.42	3868.8
10352936	Sox17	2.13	-3.512	158.84	336.5
10408613	Tubb2b	2.13	-5.004	134.72	289.3
10453057	Cyp1b1	2.08	-5.638	53.62	110.88
10452118	Lonp1	2.08	-3.423	692.81	1441.71
10606689	Timm8a1	2.08	-4.317	130.76	270.79
10541071	8430408G22	2.04	-4.852	181.33	372.68
10472538	Dhrs9	2.04	-3.057	53.95	109.48
10405094	Iars	2.04	-7.677	1968.82	4055.84
10414360	Lgals3	2.04	-5.048	271.9	559.47

10475532	Sqrdl	2.04	-6.707	1147.79	2325.22
10456756	Zbtb7c	2.04	-12.218	386.34	784.43
10566346	9230105E10	2.00	-3.623	131.87	264.4
10584124	Arhgap32	2.00	-3.685	79.17	158.89
10564507	Arrdc4	2.00	-2.79	230.57	461.14
10425364	Atf4	2.00	-5.419	673.13	1335.95
10580829	Cngb1	2.00	-7.792	136.58	273.22
10571162	Eif4ebp1	2.00	-5.733	1978.58	3921.71
10500272	Gm129	2.00	-4.522	501.57	1009.35
10384223	Igfbp3	2.00	-12.32	2976.44	6007.21
10567995	Nupr1	2.00	-5.83	2191.16	4418.46
10533246	Oas1g	2.00	-3.993	311.34	616.53
10607486	Ptchd1	2.00	-7.785	643.5	1293.4
10393341	Rhbdf2	2.00	-6.677	300.4	604.9
10361760	Timm8a1	2.00	-4.319	166.29	335.52
10376021	41160	1.96	-5.91	1144.79	2260.5
10562416	Cebpg	1.96	-4.868	559.38	1104.2
10411229	F2r	1.96	-3.863	96.42	188.36
10397351	Jdp2	1.96	-3.889	493.57	960.06
10484488	P2rx3	1.96	-5.199	109.23	216.16
10373202	Shmt2	1.96	-5.88	2539.52	4943.74
10379630	Slfn2	1.96	-5.911	1600.41	3107.84
10467149	2010002M12	1.92	-7.049	25.49	49.2
10546452	Adamts9	1.92	-8.148	355.97	682.37
10362968	Bves	1.92	-3.386	64.96	125.14
10399882	Dus4l	1.92	-3.817	279.91	538.08
10406205	Erap1	1.92	-6.694	168.44	322.08
10373452	Gm129	1.92	-5.258	707.11	1354.14
10574087	Herpud1	1.92	-4.582	1365.45	2602.13
10380622	Hoxb9	1.92	-4.841	137.19	262.76
10375515	Ifi47	1.92	-4.953	27.65	53.5
10424119	Nov	1.92	-6.165	2320.47	4423.09
10502240	Npnt	1.92	-5.948	3262.59	6281.06
10566366	Trim30d	1.92	-3.129	309.17	599.37
10518358	2610305D13	1.89	-4.111	89.9	169.65
10579331	Gdf15	1.89	-4.321	244.89	464.01
10450075	H2-K1	1.89	-3.455	240.76	453.3
10491970	Lhfp	1.89	-7.973	293.95	556.23
10429560	Ly6i	1.89	-4.349	56.91	108.3
10459405	Nars	1.89	-5.973	2948.86	5525.64
10346191	Stat1	1.89	-4.693	1715.49	3243.67
10359181	Tor3a	1.89	-4.804	778.82	1464.53
10575550	Aars	1.85	-6.296	953.43	1765.4
10353775	Bend6	1.85	-9.483	130.12	242.13
10350003	Cyb5r1	1.85	-2.978	911.59	1676.32
10432372	Dhh	1.85	-6.543	436.82	814.15
10415319	Irf9	1.85	-4.706	1247.95	2328.78
10385500	Irgm1	1.85	-5.386	1847.45	3412.08
10533256	Oas1a	1.85	-3.777	215.51	395.48
10566326	Trim12a	1.85	-4.211	312.03	577.78

10451198	Vegfa	1.85	-4.406	533.52	981.78
10372877	Xpot	1.85	-4.158	1278.34	2383.56
10543067	Asns	1.82	-5.485	4882.4	8815.15
10428310	Azin1	1.82	-6.404	1261.07	2307.39
10445347	Clic5	1.82	-9.993	599.39	1080.62
10356262	Csprs	1.82	-5.883	182.85	333.85
10362201	Ctgf	1.82	-4.739	212.55	388.95
10586248	Dennd4a	1.82	-2.566	239.95	436.22
10352514	Eprs	1.82	-3.685	1332.46	2406.77
10504450	Glipr2	1.82	-3.167	342.93	623.36
10487506	Gm14005	1.82	-3.991	81.24	147.23
10478938	Hax1	1.82	-5.073	1519.07	2737.13
10499705	Hax1	1.82	-4.918	1405.96	2553.23
10400095	Ifrd1	1.82	-3.981	925.98	1692.39
10365559	Igf1	1.82	-2.58	537.25	982.97
10424188	Mtbp	1.82	-5.815	328.84	601.31
10462683	Pcgf5	1.82	-3.566	204.72	375.56
10560709	Pvr	1.82	-3.549	1558.62	2844.82
10440099	St3gal6	1.82	-3.63	77.52	139.8
10474048	Syt13	1.82	-5.112	195.24	355.98
10508420	Yars	1.82	-6.553	1656.39	2997.07
10523547	Agpat9	1.79	-3.832	264.53	475.04
10515500	B4galt2	1.79	-7.646	127.09	226.17
10418927	Bmpr1a	1.79	-5.128	25.34	45.05
10407955	Epdr1	1.79	-5.541	393.34	701.24
10345025	Iars	1.79	-4.451	2831.77	5101.96
10444890	Ier3	1.79	-3.44	116.66	207.82
10381408	Ifi35	1.79	-5.009	712.17	1260.72
10429160	St3gal1	1.79	-10.584	1105.07	1970.18
10393106	Trim47	1.79	-3.582	288.37	514.64
10550786	Vmn1r132	1.79	-3.331	29.76	53.02
10542842	Ccdc91	1.75	-3.357	67.21	117.39
10527965	Cldn12	1.75	-4.415	326.95	574.65
10574102	Nlrc5	1.75	-3.832	92.89	161.62
10469571	Otud1	1.75	-4.388	71.29	125.9
10401607	Pgf	1.75	-4.84	2661.82	4666.4
10518726	Slc25a33	1.75	-3.036	107.91	189.75
10456405	Slmo1	1.75	-4.858	89.85	157.6
10394674	Socs2	1.75	-3.922	847.7	1500.03
10508115	Stk40	1.75	-4.117	865.25	1510.77
10376899	Trim16	1.75	-3.853	659.92	1149.32
10560767	Vmn1r132	1.75	-3.426	26.18	45.59
10550778	Vmn1r132	1.75	-3.426	26.18	45.59
10560754	Vmn1r132	1.75	-3.314	31.04	54.83
10590433	1700048O20	1.72	-5.289	36.01	61.91
10599680	3830403N18	1.72	-8.34	360.24	624.91
10601581	9230105E10I	1.72	-3.607	205.71	356.52
10463911	Add3	1.72	-7.031	864.57	1491.78
10538420	Gars	1.72	-4.778	2516.6	4309.29
10513008	Klf4	1.72	-4.875	947.61	1630.88

10608659	Klra22	1.72	-3.639	9.39	16.06
10366796	Mettl1	1.72	-2.791	568.01	983.46
10429140	Ndrgr1	1.72	-12.278	1061.42	1836.05
10350733	Rgs16	1.72	-3.871	215.8	372.18
10347796	Rhbdd1	1.72	-3.932	1356.78	2357.25
10431874	Slc38a1	1.72	-3.509	624.2	1082.62
10566333	9230105E10	1.69	-3.673	258.33	439.88
10397145	Acot2	1.69	-2.622	2100.36	3561.16
10361828	Cited2	1.69	-5.684	567.13	966.61
10578222	Dlc1	1.69	-6.008	157.46	267.77
10488806	Eif2s2	1.69	-3.899	823.2	1403.33
10458340	Hbegf	1.69	-2.573	303.61	514.51
10436428	Mina	1.69	-3.461	927.79	1572.48
10578045	Nrg1	1.69	-4.38	119.4	200.95
10441003	Runx1	1.69	-2.827	166.52	280.26
10456140	Sh3tc2	1.69	-3.815	291.71	490.64
10528015	Steap1	1.69	-3.519	25.24	42.83
10598626	Tspan7	1.69	-6.257	2000.03	3409.26
10463121	Zfp518a	1.69	-3.031	243.16	410.25
10542875	3010003L21	1.67	-5.239	110.51	183.15
10438468	Cyp2ab1	1.67	-4.446	65.92	109.54
10584259	Fez1	1.67	-4.614	822.51	1371.07
10580382	Neto2	1.67	-2.717	44.25	74.23
10482517	Nmi	1.67	-4.491	210.06	350.44
10576610	Pard3	1.67	-5.522	256.48	429.44
10521972	Pcdh7	1.67	-3.854	35.82	59.9
10602840	Sh3kbp1	1.67	-3.273	1506.8	2492.73
10604656	Xlr	1.67	-4.138	34.35	57.32
10423902	Zfpm2	1.67	-7.972	204.81	339.56
10549276	Bhlhe41	1.64	-3.768	162.38	265.32
10479852	Camk1d	1.64	-4.896	237.86	392.65
10561008	Ceacam1	1.64	-6.135	2416.7	3938.23
10360764	Enah	1.64	-8.243	241.56	398.27
10595145	Gm8074	1.64	-3.595	17.48	28.83
10458226	Hspa9	1.64	-4.931	2453.77	4037.49
10438753	Leprel1	1.64	-3.666	501.32	818.9
10385159	Rars	1.64	-4.48	3834.82	6327.47
10360934	Rrp15	1.64	-2.615	311.04	507.08
10380506	Tac4	1.64	-2.764	48.2	79.15
10566144	Trim21	1.64	-3.384	298.36	490.16
10577226	2610019F03	1.61	-4.562	97.14	155.67
10369276	Ccdc109a	1.61	-3.507	1213.41	1947.39
10519324	Cdk6	1.61	-5.776	618.81	995.54
10440427	D16Ertd472e	1.61	-5.469	506.1	813.34
10400941	Dhrs7	1.61	-4.849	312.66	505.26
10488108	Esf1	1.61	-3.021	1463.84	2364.65
10460108	Gnpnat1	1.61	-3.084	326.31	523.81
10394914	Iah1	1.61	-3.821	411.66	660.52
10413609	Mustn1	1.61	-5.145	186.36	302.65
10404996	Ninj1	1.61	-5.103	1907.59	3066.75

10529425	Nop14	1.61	-3.647	864.78	1401.99
10435457	Parp9	1.61	-3.682	422.62	679.37
10366346	Phlda1	1.61	-2.973	366.27	588.23
10489569	Pltp	1.61	-5.07	135.04	219.55
10455873	Slc12a2	1.61	-3.105	767.17	1245.86
10370510	Syde1	1.61	-3.749	492.79	789.02
10411459	Tmem171	1.61	-6.249	1122	1800.03
10585834	6030419C18	1.59	-3.27	160.31	254.03
10423109	Adamts12	1.59	-3.499	139.4	220.17
10457644	Cdh2	1.59	-3.129	407.2	641.62
10478890	Cebpb	1.59	-2.761	139.9	223.36
10578810	Clcn3	1.59	-4.14	645.42	1029.39
10476383	Crls1	1.59	-3.987	288.11	458.91
10502655	Cyr61	1.59	-4.039	198.23	314.86
10454254	Dtna	1.59	-3.188	32.48	51.73
10347915	Gm7609	1.59	-4.806	20.37	32.14
10419216	Gnpnat1	1.59	-3.267	321.27	509.34
10467842	Got1	1.59	-3.166	2410.23	3841.98
10397966	Otub2	1.59	-3.802	432.01	691.09
10359816	Pogk	1.59	-3.761	239.56	378.8
10461869	Prune2	1.59	-4.373	538.82	849.02
10447056	Qpct	1.59	-2.944	39.39	62.64
10471550	Rpl12	1.59	-2.923	348.81	556.11
10567043	Rras2	1.59	-4	1202.47	1907.94
10501358	Sars	1.59	-5.522	2954.16	4709.56
10495830	Sec24d	1.59	-3.169	637.44	1007.83
10529515	Sorcs2	1.59	-4.999	112.1	178.45
10493850	Sprr2a1	1.59	-3.983	181.4	289.93
10435075	Tfrc	1.59	-2.797	158.6	251.63
10433433	BC024814	1.56	-3.7	390.3	607.58
10548030	Cd9	1.56	-4.169	462.44	726.71
10538338	Creb5	1.56	-6.765	121.5	190.69
10464391	Emx2	1.56	-3.696	47.94	75.45
10548905	Eps8	1.56	-2.669	389.05	611.89
10402808	Jag2	1.56	-6.96	157.64	246.03
10598638	Mid1ip1	1.56	-4.181	834.84	1306.84
10580191	Nfix	1.56	-3.584	1074.29	1679.12
10429843	Parp10	1.56	-4.457	297.08	461.92
10407481	Pfkip	1.56	-8.308	298.65	466.22
10385511	Psme2	1.56	-4.815	653.75	1014.8
10363181	Stard6	1.56	-6.784	111.4	175.03
10445241	Tnfrsf21	1.56	-4.999	284.46	447.44
10371676	Utp20	1.56	-2.625	640.42	997.46
10489237	9430008C03	1.54	-3.265	591.07	908.24
10582445	Ankrd11	1.54	-5.56	932.35	1423.47
10366848	B4galnt1	1.54	-3.303	190.38	291.53
10483178	Cobll1	1.54	-3.701	250.83	387.71
10474958	Dll4	1.54	-3.868	1330.37	2052.62
10385504	Gm5431	1.54	-4.012	19.25	29.75
10606016	Il2rg	1.54	-5.496	2272.02	3509.24

10555197	Mtap6	1.54	-5.433	384.93	591.04
10410264	Mterfd1	1.54	-4.601	649.49	1004.99
10450611	Nrm	1.54	-4.62	132.6	202.75
10476401	Plcb1	1.54	-5.277	150.76	233.47
10408097	Prss16	1.54	-3.709	149.45	229.06
10410709	Rfesd	1.54	-5.072	276.03	426.43
10420216	Sdr39u1	1.54	-5.074	530.79	811.05
10379646	Slfn3	1.54	-4.051	2230.02	3412.2
10456556	Stard6	1.54	-6.464	112.88	172.98
10488378	Thbd	1.54	-4.588	2797.28	4301.63
10438555	Thpo	1.54	-5.098	86.64	134.09
10566358	Trim30a	1.54	-3.602	1893.96	2919.99
10499514	Trim46	1.54	-3.354	237.39	366.37
10402585	Wars	1.54	-3.834	2536.11	3914.43
10489850	Znfx1	1.54	-4.89	951.4	1465.33
10389005	1110002N22	1.52	-4.277	286.37	434.25
10501971	Ank2	1.52	-3.055	54.55	82.09
10582458	Ankrd11	1.52	-4.932	275.13	418.83
10363007	Ascc3	1.52	-3.25	808.72	1226.86
10359982	Atf6	1.52	-2.635	1510.5	2282.05
10490632	BC006779	1.52	-5.89	662.01	1003.29
10423274	Cdh18	1.52	-4.069	95.76	145.14
10581737	Ddx19b	1.52	-5.235	121.1	183.28
10462231	Dmrt2	1.52	-3.551	65.75	98.99
10515095	Elavl4	1.52	-3.472	26.89	40.77
10424853	Fam203a	1.52	-3.997	460.97	702.35
10405211	Gadd45g	1.52	-2.822	349.24	525.81
10538590	Herc6	1.52	-3.161	329.79	497.09
10580183	Ier2	1.52	-3.516	225.68	340.59
10499655	Il6ra	1.52	-4.271	296.12	448.39
10376033	Kif3a	1.52	-3.229	272.59	412.61
10365817	Ntn4	1.52	-4.303	171.47	261.18
10554521	Pde8a	1.52	-4.822	573.96	867.5
10515399	Plk3	1.52	-2.594	1360.32	2062.4
10431792	Pus7l	1.52	-2.615	371.57	564.84
10457959	Sft2d3	1.52	-3.693	79.72	121.54
10498332	Siah2	1.52	-3.423	423.13	639.64
10516956	Smpdl3b	1.52	-4.531	1183.97	1801.88
10447891	Acat2	-1.50	2.61	572.29	380.96
10390032	Acsf2	-1.50	2.501	820.62	546.69
10461930	D030056L22	-1.50	2.814	313.1	208.63
10517967	Fblim1	-1.50	3.869	1280.46	852.64
10587194	Gnb5	-1.50	2.801	557.02	370.95
10540118	Lsm3	-1.50	3.33	1561.51	1039.62
10574976	Pla2g15	-1.50	4.011	312.43	208.66
10464754	Rhod	-1.50	4.161	954.17	634.56
10383731	Smtn	-1.50	3.739	2360.39	1577.89
10465089	Snx32	-1.50	2.368	593.56	394.94
10479765	Suv39h2	-1.50	2.462	95.32	63.73
10443535	Tbc1d22b	-1.50	7.112	1743.1	1158.81

10495416	Vav3	-1.50	4.237	842.54	561.12
10494655	Zfp697	-1.50	4.337	1808.53	1205.79
10526754	Ap4m1	-1.51	4.444	689.25	457.87
10546031	Aplf	-1.51	2.821	168.22	111.25
10492341	Arhgef26	-1.51	2.974	61.59	40.84
10554129	B130024G19	-1.51	3.671	319.88	211.5
10583847	Bbs9	-1.51	4.042	333.37	221.09
10537179	Bpgm	-1.51	5.256	269.54	178.18
10511429	Car8	-1.51	3.107	504.77	335.07
10531987	Gbp4	-1.51	3.796	4232.3	2796.36
10539119	Ggcx	-1.51	6.336	806.98	533.36
10545308	Kdm3a	-1.51	7.687	927.93	613.96
10446928	Ltbp1	-1.51	3.792	211.15	140.11
10409424	Mxd3	-1.51	2.668	263.51	174.88
10585395	Siva1	-1.51	2.504	172.65	114.68
10350188	Tmem9	-1.51	3.169	599.49	396.93
10471474	Ak1	-1.52	3.54	1485.91	974.44
10345046	Efhc1	-1.52	6.1	229.92	150.97
10543118	Glicc1	-1.52	2.589	283.84	187.23
10565958	P2ry6	-1.52	2.439	275.55	181.44
10560644	Pvrl2	-1.52	4.569	915.61	602.58
10458843	Sema6a	-1.52	3.058	1506.31	989.53
10434758	St6gal1	-1.52	5.438	676.44	443.96
10446063	Tnfaip8l1	-1.52	2.89	239.66	157.67
10535231	Ttyh3	-1.52	3.887	1678.05	1102.57
10381260	Tubg2	-1.52	3.441	209.09	137.47
10403081	Wdr60	-1.52	3.163	182.86	120.03
10572398	Cr1f1	-1.53	4.634	195.15	127.91
10544501	Ezh2	-1.53	2.531	1539.6	1008.28
10394593	Fam49a	-1.53	3.177	901.62	589.75
10376208	Gm2a	-1.53	4.689	1177.05	767.39
10472958	Hoxd10	-1.53	4.226	157.68	102.73
10545921	Mxd1	-1.53	3.232	428	279.05
10419744	Oxa1l	-1.53	3.59	1876.36	1223.27
10390103	Pdk2	-1.53	2.84	648.06	422.53
10476021	Sirpa	-1.53	3.912	2482.25	1623.46
10449242	Snrpg	-1.53	6.043	1017.56	666.99
10582778	Tarbp1	-1.53	2.475	150.64	98.4
10445702	Usp49	-1.53	3.673	146.12	95.57
10519612	9330182L06f	-1.54	6.037	393.65	254.95
10561927	Aplp1	-1.54	3.299	367.96	238.94
10523297	Ccng2	-1.54	2.859	403.28	262.61
10474223	Cd59b	-1.54	3.332	28.65	18.58
10590060	Ctdspl	-1.54	3.063	380.41	246.79
10591660	Epor	-1.54	3.12	162.33	105.44
10563085	Fcgrt	-1.54	4.16	273.73	177.63
10408321	Gmnn	-1.54	2.906	54.58	35.43
10400971	Six4	-1.54	3.822	219.45	142.15
10489759	Sulf2	-1.54	2.564	881.32	573.05
10372831	Tbc1d30	-1.54	5.658	64	41.64

10363445	4632428N05	-1.55	7.62	659.18	424.08
10521667	Bst1	-1.55	4.535	1629.72	1054.32
10562651	C330019L16I	-1.55	4.482	207.21	133.42
10582427	Cbfa2t3	-1.55	3.177	584.72	376.53
10589420	Cdc25a	-1.55	3.634	507.88	327.64
10409866	Ctla2b	-1.55	3.274	728.73	471.43
10446441	Ddx11	-1.55	4.105	320.22	206.46
10357164	Epb4.1I5	-1.55	3.133	236.61	152.41
10444895	Flot1	-1.55	3.879	446.49	287.69
10439114	Iqcg	-1.55	2.88	325.74	210.7
10508465	Marcks1	-1.55	5.327	2101.7	1352.66
10531370	Naaa	-1.55	3.654	423.55	273.06
10460626	Rnaseh2c	-1.55	2.562	639.62	412.41
10380489	Samd14	-1.55	3.424	227.33	147.1
10476301	Smox	-1.55	5.121	751.49	484.63
10443108	Syngap1	-1.55	2.417	30.99	20.02
10528790	Xrcc2	-1.55	2.481	154.56	99.42
10354677	Ankrd44	-1.56	2.734	160.53	103.11
10601846	Arxes2	-1.56	3.028	32.47	20.84
10500434	Bcl9	-1.56	3.52	801.69	514.46
10490923	Car2	-1.56	2.917	124.74	80.03
10496023	Casp6	-1.56	2.845	945.69	604.75
10497265	Fabp4	-1.56	3.078	5684.95	3643.64
10583992	Igsf9b	-1.56	2.684	469.14	299.94
10421581	Lrch1	-1.56	4.047	1764.44	1128.19
10460666	Ltbp3	-1.56	5.11	955.49	610.67
10537062	Mest	-1.56	5.48	4984.16	3199.36
10606554	Nap1I3	-1.56	4.455	130.64	83.92
10437432	Nmral1	-1.56	3.133	388.91	248.92
10574676	Nol3	-1.56	2.894	145.71	93.54
10508099	Oscp1	-1.56	3.241	335.64	214.64
10536483	Tes	-1.56	4.823	1863.26	1192.7
10377380	1500010J02F	-1.57	3.046	1154.98	736.55
10549171	5730419I09F	-1.57	10.159	708.02	449.66
10414102	Mmrn2	-1.57	3.408	6326.54	4025
10598369	Prickle3	-1.57	3.266	327.21	209.03
10603431	Suv39h1	-1.57	2.537	603.14	383.74
10547274	Zfp248	-1.57	4.538	336.38	213.87
10484425	2700094K13I	-1.58	2.759	519.47	329.72
10435704	Cd80	-1.58	2.884	118.56	75.14
10587733	Ctsh	-1.58	3.728	4268.22	2697.69
10498998	D930015E06	-1.58	5.596	227.61	143.83
10488147	Flrt3	-1.58	6.793	944.18	598.17
10373583	Gdf11	-1.58	2.986	448.02	283.77
10350753	Glul	-1.58	2.691	1630.69	1032.47
10473281	Itgav	-1.58	6.965	1625.65	1027.33
10546510	Lrig1	-1.58	4.007	516.81	328.03
10489246	Mafb	-1.58	2.442	1336.73	845.71
10572928	Rasd2	-1.58	3.361	93.27	59.01
10471464	St6galnac6	-1.58	2.748	375.31	237.21

10552245	Tshz3	-1.58	3.092	1154.5	731.97
10447275	1700106N22	-1.59	2.905	441.67	277.3
10519607	4930420K17	-1.59	5.078	606.4	380.66
10472128	Arl6ip6	-1.59	3.431	799.99	504.39
10406407	Arrdc3	-1.59	7.989	1583.08	996.83
10384811	Ccdc104	-1.59	3.414	423.47	267.08
10444858	Cchcr1	-1.59	3.184	362.24	227.34
10417167	Clybl	-1.59	6.251	819.73	516.83
10493494	Efna3	-1.59	2.476	127.49	79.99
10475625	Eid1	-1.59	4.527	815.87	514.4
10605392	F8	-1.59	10.09	1785.81	1122.71
10528794	Gm10471	-1.59	2.764	37.79	23.76
10606436	Hmgn5	-1.59	2.867	216.57	136.44
10359754	Mpzl1	-1.59	6.505	1597.18	1006.4
10469559	Msrb2	-1.59	3.971	196.38	123.86
10460400	Pcx	-1.59	3.074	417.55	262.87
10407097	Pde4d	-1.59	3.438	477.61	300.55
10485624	Prrg4	-1.59	2.494	242.72	152.22
10467493	Tctn3	-1.59	4.421	812.34	510.84
10489391	Ada	-1.60	4.044	164.53	102.59
10567412	Eri2	-1.60	3.064	765.42	478.27
10499168	Kirrel	-1.60	4.646	684.22	426.76
10447417	Msh6	-1.60	3.982	369.29	230.44
10546834	Rad18	-1.60	3.053	1221.36	764.91
10396849	Rad51l1	-1.60	2.955	75.79	47.25
10455967	2610318N02	-1.61	4.698	144.99	90.15
10355325	Bard1	-1.61	2.85	151.89	94.17
10402063	Foxn3	-1.61	4.475	783.5	487.82
10564539	Mctp2	-1.61	4.417	99.89	61.89
10529375	Mxd4	-1.61	2.982	1546.5	961.93
10588482	Poc1a	-1.61	3.243	161.91	100.87
10597945	Tmem158	-1.61	2.952	414.86	257.07
10542340	8430419L09	-1.62	6.83	608.3	376.47
10346374	Aox1	-1.62	3.115	1218	752.63
10551469	Dyrk1b	-1.62	3.409	979.27	603.84
10446777	Ehd3	-1.62	5.346	1134.92	699.08
10582501	Fanca	-1.62	2.601	230.21	142.4
10491732	Fat4	-1.62	3.338	606.55	375.13
10451547	Gm16494	-1.62	3.081	630.4	388.74
10579659	Hmgn2	-1.62	2.937	1839.83	1132.43
10395163	Lamb1	-1.62	4.23	897.32	553.67
10455813	Lmnb1	-1.62	2.509	418	257.34
10595981	Mras	-1.62	5.288	1534.62	946.55
10451372	Ptk7	-1.62	7.243	274.15	169.61
10402117	Rps6ka5	-1.62	3.434	269.88	166.55
10492679	4930579G24	-1.63	2.683	362.66	222.9
10587085	BC031353	-1.63	2.825	251.28	154.01
10471424	Fam102a	-1.63	3.478	597.83	367.19
10346607	Fzd7	-1.63	7.206	836.56	513.71
10600017	Hmgb3	-1.63	4.38	532.36	327.13

10403108	Hmgn2	-1.63	2.959	2226.78	1362.85
10580061	Il27ra	-1.63	4.217	200.15	122.99
10552516	Klk6	-1.63	5.321	150.7	92.41
10462035	Ldhb	-1.63	5.03	91.52	56.09
10595979	Mras	-1.63	4.112	832.97	512.3
10494817	Ngf	-1.63	4.193	610.63	375.45
10472400	Scn2a1	-1.63	4.298	16.63	10.21
10526120	Tpst1	-1.63	4.682	657.42	403.47
10541877	Vamp1	-1.63	4.153	252.83	155.27
10549842	Zfp667	-1.63	4.811	226.32	139.27
10379953	4632419I22F	-1.64	2.929	691.47	422.47
10465844	Asrgl1	-1.64	3.505	112.8	68.73
10424779	Cks2	-1.64	2.528	1507.32	918.59
10528077	Dbf4	-1.64	3.146	777.27	472.74
10542677	Etnk1	-1.64	6.957	1576.42	958.54
10473312	Fam171b	-1.64	2.969	571.79	347.63
10517141	Hmgn2	-1.64	2.964	1878.87	1144.66
10591773	Hmgn2	-1.64	2.945	1809.15	1100.21
10400649	Pole2	-1.64	2.555	556.88	339.84
10350864	Sec16b	-1.64	4.618	83.64	51.1
10368720	Slc16a10	-1.64	5.957	455.68	277.48
10539933	Txnrd3	-1.64	3.916	870.04	530.86
10457587	Zfp521	-1.64	2.753	1115.16	679.57
10512949	Abca1	-1.65	3.996	2391.77	1448.87
10420320	Cenpj	-1.65	2.667	230.74	139.79
10440953	Donson	-1.65	2.415	236.23	143.56
10529613	Evc	-1.65	4.998	276.16	167.44
10557326	Il4ra	-1.65	5.957	3984.49	2418.49
10591270	Olfm2	-1.65	2.48	689.53	418.72
10445293	Pla2g7	-1.65	3.279	68	41.2
10399011	4930427A07	-1.66	3.505	212.11	128.16
10416736	6720463M24	-1.66	3.087	323.85	194.58
10409990	6720489N17	-1.66	4.255	365.75	220.86
10453049	Cdc42ep3	-1.66	3.282	520.43	313.28
10546685	Eif4e3	-1.66	6.086	126.77	76.18
10554463	Hddc3	-1.66	3.627	408.62	245.56
10433887	Pkp2	-1.66	5.101	430.87	259.92
10521626	Cc2d2a	-1.67	2.562	208.22	124.49
10447023	Heatr5b	-1.67	2.859	132.16	79.08
10512236	Kif24	-1.67	3.546	128.54	77.11
10517116	Rps6ka1	-1.67	4.323	287.37	171.79
10348739	Sned1	-1.67	3.943	737.11	442.7
10458033	Stard4	-1.67	3.041	846.71	508.15
10424543	Wisp1	-1.67	5.5	374.56	223.84
10554045	Adamts17	-1.68	3.037	754.63	450.52
10594631	Aph1b	-1.68	4.485	428.95	255.08
10540935	Cand2	-1.68	5.08	330.66	196.62
10544906	Ggct	-1.68	5.347	371.94	220.78
10388234	Gsg2	-1.68	2.647	230.15	136.99
10602068	Mid2	-1.68	6.382	1613.14	957.51

10574384	Ndrg4	-1.68	4.732	390.98	232.66
10349834	Pik3c2b	-1.68	2.355	1259.71	749.6
10485378	Prr5l	-1.68	5.759	644.57	384.39
10383395	Slc25a10	-1.68	2.46	511.77	304.02
10433578	Snn	-1.68	3.793	456.52	271.56
10379034	Tlcd1	-1.68	4.53	220.9	131.74
10355329	Bard1	-1.69	2.503	278.79	165.11
10396030	Fancm	-1.69	2.426	152.36	90.11
10427898	Fbxl7	-1.69	4.756	169.08	100.34
10472782	Hat1	-1.69	2.979	1680.16	995.26
10356461	Hjurp	-1.69	3.093	1195.57	708.74
10462442	Ii33	-1.69	7.512	65.8	38.92
10357436	Mcm6	-1.69	2.504	980.76	581.3
10449999	Zfp101	-1.69	2.822	169.32	100.09
10537157	Akr1b10	-1.70	6.539	605.92	356.13
10353004	Cks2	-1.70	2.454	1482.97	873.32
10604175	Fam70a	-1.70	2.947	351.94	206.81
10465861	Incenp	-1.70	2.438	728.88	428.66
10358982	Mr1	-1.70	3.929	2045.68	1202.79
10545910	Pcyox1	-1.70	4.71	1893.89	1116
10393628	Tbc1d16	-1.70	5.739	382.27	224.67
10572815	Tmem38a	-1.70	3.107	358.89	211.07
10410560	Trip13	-1.70	2.767	177.76	104.64
10477052	2310046K01	-1.71	4.787	317.66	185.65
10582008	2310061C15	-1.71	2.356	1019.63	595.76
10405185	Cks2	-1.71	2.454	1221.23	714.12
10494122	Rfx5	-1.71	4.3	323.6	189.74
10555460	Stard10	-1.71	4.738	569.33	332.15
10409876	Ctla2a	-1.72	4.762	1992.63	1159.22
10352954	Hmgb3	-1.72	5.322	508.79	295.46
10498599	Ift80	-1.72	4.291	402.21	233.95
10350742	Rnasel	-1.72	4.434	148.97	86.84
10528915	Tyms	-1.72	2.633	738.55	428.2
10435948	Ccdc80	-1.73	3.059	93.43	53.92
10434516	Fam131a	-1.73	4.184	479.28	276.98
10404885	Gmpr	-1.73	4.83	244.57	141.34
10382425	Gprc5c	-1.73	4.098	243.12	140.75
10346000	Gulp1	-1.73	7.572	66.92	38.73
10587799	Plscr2	-1.73	3.368	691.64	400.69
10607877	Prps2	-1.73	3.727	1609.82	928.09
10586184	Tipin	-1.73	2.525	636.83	369.05
10442194	Zfp677	-1.73	5.849	130.62	75.7
10481272	1700007K13	-1.74	3.29	95.27	54.64
10453233	Slc8a1	-1.74	4.606	197.57	113.41
10522090	Wdr19	-1.74	4.343	337.31	193.82
10400321	1110002B05	-1.75	3.212	307.31	176.07
10524790	Cit	-1.75	2.611	304.57	174.34
10451604	Mdfi	-1.75	8.641	1526.88	873.15
10380289	Mmd	-1.75	3.125	267.74	152.98
10412559	Slbp	-1.75	3.109	643.99	367.67

10400006	Ahr	-1.76	3.488	3286.87	1869.18
10535807	Flt1	-1.76	2.985	1082.5	615.08
10395612	G2e3	-1.76	4.146	838.86	477.88
10474381	Kif18a	-1.76	2.655	196.69	111.81
10406877	Serf1	-1.76	4.73	288.01	163.88
10584334	Siae	-1.76	4.304	876.81	499.3
10371506	Stab2	-1.76	7.82	138.58	78.67
10545644	Wbp1	-1.76	4.242	1922.25	1089.74
10440794	2610039C10	-1.77	3.433	268.04	151.43
10443730	Abcg1	-1.77	7.678	489.98	277.36
10454851	Cxxc5	-1.77	7.571	710.53	400.56
10399584	G730007D18	-1.77	4.49	212.25	120.22
10369993	Gstt3	-1.77	4.043	778.98	440.04
10499854	S100a1	-1.77	3.655	289.26	163.65
10576586	Slc35f3	-1.77	3.702	103.28	58.39
10462005	Tmem2	-1.77	6.812	1630.56	919.31
10360187	Vangl2	-1.77	4.491	445.63	251.71
10556266	Wee1	-1.77	2.382	918.48	517.82
10488459	Zfp442	-1.77	6.261	186.16	104.92
10606058	Cxcr3	-1.78	6.721	191.69	107.68
10373542	Dgka	-1.78	4.272	1283.4	719.33
10525365	Hvcn1	-1.78	3.762	320.18	180.3
10539017	Reep1	-1.78	4.554	527.49	296.95
10385466	Sgcd	-1.78	6.289	394.92	221.59
10596931	Wdr6	-1.78	2.451	617.65	347.56
10522060	Fam114a1	-1.79	4.674	516.06	288.08
10478160	Fam83d	-1.79	2.629	526.34	293.35
10446001	Fsd1	-1.79	3.549	205.08	114.58
10544891	Nod1	-1.79	3.479	769.06	429.72
10515257	Rad54l	-1.79	2.881	183.14	102.55
10396840	Rdh12	-1.79	5.566	319.05	178.06
10458285	Spata24	-1.79	3.609	332.02	185.95
10498620	Trim59	-1.79	3.724	481.04	269.09
10484261	Cerkl	-1.80	3.662	121.34	67.55
10601303	Chic1	-1.80	3.923	759.91	422.99
10425066	Csf2rb	-1.80	2.523	564.28	313.96
10460468	Ctsf	-1.80	4.41	338.13	187.75
10594251	Kif23	-1.80	2.853	1534.93	852.92
10351491	Olfml2b	-1.80	4.531	158.14	88.03
10526514	Cldn15	-1.81	3.853	624.94	345.92
10420372	Cryl1	-1.81	3.754	815.23	450.93
10456492	D18Ertd653e	-1.81	6.237	644.12	355.32
10523923	Ccdc18	-1.82	3.05	108.44	59.57
10586491	Dapk2	-1.82	4.758	346.77	190.44
10394990	Mboat2	-1.82	5.302	345.87	189.55
10491805	Plk4	-1.82	2.58	635.26	348.62
10358057	Shisa4	-1.82	5.554	1018.67	558.89
10430032	Tonsl	-1.82	2.694	172.37	94.84
10421697	9030625A04	-1.83	4.344	202.5	110.5
10601312	Chic1	-1.83	3.759	1319.78	720.87

10420957	Ptk2b	-1.83	5.273	976.66	534.51
10503259	Trp53inp1	-1.83	7.852	1720.64	938.06
10395457	Etv1	-1.84	5.884	148.57	80.68
10574378	Gins3	-1.84	2.492	371.18	201.35
10510215	Gm13139	-1.84	4.105	276.2	150.46
10419779	Haus4	-1.84	2.699	368.99	200.02
10540059	Slc41a3	-1.84	5.604	708.15	383.86
10495945	4930422G04	-1.85	2.61	181.64	98.37
10604620	Fam122b	-1.85	3.343	397.31	214.63
10465912	Fen1	-1.85	2.551	495.37	268.26
10548761	Hebp1	-1.85	6.957	370.38	200.01
10606163	4930519F16I	-1.86	4.186	43.3	23.34
10559568	6030429G01	-1.86	5.885	242.61	130.48
10446027	Chaf1a	-1.86	2.523	377.04	203.07
10393926	Dcxr	-1.86	3.882	753.55	404.19
10577164	Gas6	-1.86	2.387	1095.39	588.3
10601844	Bhlhb9	-1.87	5.994	125.01	66.93
10390050	Eme1	-1.87	2.521	323.52	172.74
10416406	Htr2a	-1.87	4.734	137.05	73.3
10353733	Prim2	-1.87	2.691	1313.28	702.7
10366983	Tmem194	-1.87	3.036	812.21	433.42
10478572	Ube2c	-1.87	2.538	1265.61	677.6
10565712	Acer3	-1.88	7.849	1142.78	607.45
10379989	Fam33a	-1.88	2.707	1167.22	620.42
10541034	Anubl1	-1.89	4.376	348.43	184.54
10362294	Arhgap18	-1.89	7.286	265.39	140.1
10571696	Casp3	-1.89	6.578	900.82	477.56
10544462	Fam115a	-1.89	6.592	721.11	380.59
10452709	Ndc80	-1.89	2.574	344.07	181.97
10349051	Tnfrsf11a	-1.89	5.012	300.37	159.03
10355806	Tuba4a	-1.89	4.813	777.84	411.47
10506571	Dhcr24	-1.90	3.748	1170.27	616.9
10516723	Hcrtr1	-1.90	4.292	290.89	153.05
10544751	Hoxa2	-1.90	6.808	623.79	329.13
10352798	Kcnh1	-1.90	6.307	220.7	116.26
10547088	Mbd4	-1.90	4.115	347.07	182.85
10366277	E2f7	-1.91	2.731	816.26	427.3
10517655	Pla2g5	-1.91	6.696	442.52	231.57
10585286	Arhgap20	-1.93	4.342	74.91	38.89
10503617	Mms22l	-1.93	2.38	161.29	83.77
10380566	Phospho1	-1.93	5.063	285.36	147.67
10359648	Scyl3	-1.93	3.015	301.53	156.37
10442932	Tmem8	-1.93	8.786	298.52	154.54
10467637	Arhgap19	-1.94	2.786	499.41	256.87
10406934	Etv1	-1.94	6.625	194.5	100.02
10436666	Jam2	-1.94	6.232	5544.93	2852.25
10466800	Pgm5	-1.94	2.841	252.12	129.66
10485963	Arhgap11a	-1.95	2.768	579.71	296.85
10357875	Btg2	-1.95	4.586	2703.66	1385.95
10554281	Fanci	-1.95	2.718	191.88	98.61

10538658	Herc3	-1.95	8.128	232.88	119.3
10401852	4930534B04	-1.96	3.747	218.84	111.45
10421361	Bmp1	-1.96	3.886	873.76	445.35
10545835	1700040I03F	-1.97	2.855	486.16	246.54
10379363	Atad5	-1.97	2.359	158.37	80.41
10523012	Dck	-1.97	2.422	486.57	247.3
10539818	Gp9	-1.97	2.435	720.04	364.73
10603135	Fancb	-1.98	2.465	225.2	113.84
10569181	Lrdd	-1.98	3.547	382.75	193.62
10511333	Plag1	-1.98	5	124.72	63.09
10453857	Gata6	-1.99	4.714	310.72	155.77
10415411	Nynrin	-1.99	4.628	1007	506.13
10607225	Lrch2	-2.00	6.289	279.38	139.8
10403229	Itgb8	-2.02	5.023	129.5	64.05
10586194	Megf11	-2.02	4.384	307.14	151.77
10592084	St3gal4	-2.02	7.656	1055.65	522.81
10366293	Csrp2	-2.03	6.522	557.62	274.92
10546163	Mcm2	-2.03	2.948	1247.76	614.81
10565570	4632434I11F	-2.04	2.641	1372.26	671.51
10356780	Pask	-2.04	3.245	317.17	155.28
10481931	Phf19	-2.04	3.218	307.35	150.31
10495574	Sass6	-2.04	2.724	879.18	431.86
10375065	Sh3pxd2b	-2.04	5.253	678.67	332.31
10475362	Wdr76	-2.04	2.599	368.47	180.88
10413482	Wnt5a	-2.04	5.062	147.98	72.37
10597470	Cmtm8	-2.05	3.743	413.54	201.98
10443007	Neurl1b	-2.05	4.633	249.52	121.44
10583242	Sesn3	-2.05	5.572	503.36	246.06
10426016	Gtse1	-2.06	3.595	885.56	429.09
10583952	Ncapd3	-2.06	2.933	657.28	319.19
10351047	Cenpl	-2.07	3.196	174.13	83.95
10399308	Fkbp1b	-2.07	10.254	238.28	115.12
10421877	Diap3	-2.08	2.776	338.08	162.8
10504957	Smc2	-2.08	2.721	740.36	356.59
10515744	Cdc20	-2.09	2.576	737.06	353.04
10369815	Cdk1	-2.09	2.644	2735.73	1307.04
10502638	Clca5	-2.09	5.908	376.03	179.71
10555695	Rrm1	-2.09	2.438	3159.3	1508.54
10591369	Dnmt1	-2.10	2.606	980.02	467.41
10423855	Rims2	-2.10	4.845	90.26	43
10499545	Efna3	-2.11	3.617	394.07	186.48
10569335	H19	-2.11	7.021	302.03	142.96
10377560	Sat2	-2.11	5.117	162.68	77.21
10521090	Tacc3	-2.11	2.688	375.26	177.89
10426669	Troap	-2.11	2.966	512.06	242.54
10350341	Mir181b-1	-2.12	3.788	150.59	71.17
10377372	Slc25a35	-2.12	3.733	302.71	142.65
10538299	Hoxa3	-2.13	4.612	351.74	165.48
10550102	Lig1	-2.13	2.622	560.79	262.93
10415408	Nynrin	-2.13	4.173	975.15	457.17

10427369	Pde1b	-2.13	6.376	349.85	163.9
10490104	Aurka	-2.14	2.569	853.19	399.62
10462140	Dock8	-2.14	6.303	426.53	199.4
10477187	Tpx2	-2.14	2.503	948.95	443.6
10367973	Aig1	-2.15	5.188	139.32	64.75
10557156	Plk1	-2.15	2.386	2175.39	1010.54
10594774	Ccnb2	-2.16	2.663	2870.65	1331.28
10371770	Gas2l3	-2.16	4.222	1131.88	523.51
10379127	Spag5	-2.16	2.755	396.58	183.67
10539617	Alms1	-2.17	7.022	318.31	146.45
10417004	Dzip1	-2.17	10.434	398.76	183.35
10569393	R74862	-2.17	6.516	588.94	271.15
10437945	Mcm4	-2.18	2.593	1015.03	466.23
10474825	D2Ertd750e	-2.19	2.763	988.06	451.53
10555205	Gdpd5	-2.19	4.108	792.87	362.02
10355967	Ap1s3	-2.20	7.319	538.92	245.25
10516246	Cdca8	-2.21	2.523	322.85	145.81
10538832	Mad2l1	-2.21	3.019	2611.46	1180.6
10418506	Stab1	-2.23	9.227	5392.63	2419.05
10415413	Nynrin	-2.24	4.477	1312.17	585.4
10497253	Pmp2	-2.24	2.59	97.77	43.73
10382435	Gprc5c	-2.25	3.483	342.83	152.24
10399478	Lpin1	-2.26	6.433	312.5	138.13
10458195	Cdc25c	-2.27	3.044	186.64	82.17
10534974	Mcm7	-2.27	2.482	1319.08	580.44
10385542	Btnl9	-2.28	7.727	407.85	179.15
10537712	Gstk1	-2.28	6.201	1181.87	518.58
10350297	Kif14	-2.28	3.367	242.47	106.13
10594426	Zwilch	-2.28	3.077	469.35	206.02
10453231	Slc8a1	-2.29	5.29	97.71	42.59
10479811	Mcm10	-2.30	2.354	371.24	161.71
10430825	Cenpm	-2.31	2.499	830.52	359.34
10525591	Kntc1	-2.31	2.369	328.34	142.18
10346843	Nrp2	-2.31	10.146	2705.56	1171.73
10515836	Ccnb1	-2.33	2.688	1225.02	524.93
10466304	Dtx4	-2.33	6.434	390.05	167.08
10554445	Prc1	-2.33	2.483	1016.65	436.62
10346365	Sgol2	-2.33	2.829	2106.16	902.3
10513818	Stmn1	-2.33	2.538	2282.24	980.06
10354168	Tbc1d8	-2.33	5.777	306.98	131.95
10446074	Uhrf1	-2.33	2.668	693.4	297.21
10562637	Ccnb1	-2.34	2.699	1540.82	657.8
10411739	Ccnb1	-2.34	2.609	1286.06	548.77
10385583	Ltc4s	-2.34	3.196	2609.82	1116.5
10607366	Shroom2	-2.34	5.954	411.29	175.57
10508986	Stmn1	-2.34	2.513	2384	1018.32
10401673	Tgfb3	-2.34	7.868	3509.91	1501.67
10389606	Prr11	-2.35	2.84	1198.36	510.12
10497451	Cpa3	-2.36	4.735	69.92	29.61
10487577	Ckap2l	-2.37	2.518	421.83	177.88

10542079	Foxm1	-2.37	3.172	661.21	278.5
10372139	Nts	-2.37	4.303	348.67	146.9
10572282	Hapln4	-2.38	8.762	350.49	147.47
10540408	Itpr1	-2.38	16.211	503.74	211.29
10568150	Kif22	-2.38	2.433	478.7	200.74
10382998	Birc5	-2.39	2.931	296.93	124.46
10485213	Cd82	-2.39	8.633	616.48	257.58
10497520	Ect2	-2.39	2.764	1066.9	446.77
10571715	Enpp6	-2.40	3.035	265.49	110.7
10462973	Hells	-2.40	2.588	699.87	292.05
10495316	Psrc1	-2.40	4.791	1298.99	541.01
10568714	Mki67	-2.41	2.581	1915.81	794.2
10390707	Top2a	-2.41	2.451	1440.75	597.9
10538640	Abcg2	-2.42	3.544	886.62	366.05
10350392	Aspm	-2.42	2.749	451.68	186.74
10591781	Anln	-2.43	2.693	1160.67	477.98
10422321	Dzip1	-2.43	8.949	914.91	377.05
10361995	Fam54a	-2.43	2.703	405.78	166.76
10414315	Cdkn3	-2.45	3.192	540.13	220.14
10497831	Ccna2	-2.46	2.515	2887.22	1174.49
10517287	Man1c1	-2.46	7.356	1292.27	525.19
10471721	Ptgs1	-2.47	4.502	1436.53	580.48
10451805	Sgol1	-2.47	2.603	564.01	228.08
10605711	Pdk3	-2.48	7.856	578.1	233.55
10436106	C330027C09	-2.49	3.101	576.62	232
10396068	Lrr1	-2.49	2.483	349.32	140.54
10546421	Prickle2	-2.49	2.992	662.57	266.54
10495083	Kcnd3	-2.50	7.001	413.38	165.62
10514177	Bnc2	-2.51	10.464	193.57	77.16
10421029	Cdca2	-2.51	2.91	511.65	203.86
10585699	Fabp5	-2.52	3.739	6298.79	2500.75
10475437	Sord	-2.52	5.935	1611.12	639.78
10450374	D17H6S56E-1	-2.53	2.923	2278.7	900.19
10406581	Dhfr	-2.55	2.424	423.89	166.55
10416437	Lcp1	-2.55	9.989	1263.44	496.33
10371591	4930547N16	-2.56	2.601	352.14	137.49
10540738	Fancd2	-2.56	3.113	226.09	88.24
10370587	Shc2	-2.56	10.637	207.77	81.32
10541729	Cdca3	-2.57	2.67	653.91	254.47
10601705	Cenpi	-2.57	2.471	207.19	80.49
10513061	Ctnnal1	-2.57	11.736	1294.61	503.72
10564165	Snord116	-2.57	7.112	140.99	54.97
10391811	Kif18b	-2.58	2.731	1096.78	425.41
10587508	Ttk	-2.58	2.665	230.89	89.57
10590494	Kif15	-2.59	2.93	305.33	117.72
10413874	Ogdhl	-2.60	6.414	251.13	96.64
10358894	Sord	-2.60	6.223	1777.2	682.36
10564169	Snord116	-2.61	6.206	109.52	42.04
10361110	Dtl	-2.62	2.803	1365.74	521.48
10539342	Rtkn	-2.63	6.191	355.36	134.91

10554325	5730590G19	-2.64	2.714	362.48	137.3
10492689	Pdghc	-2.64	6.912	676.06	256.03
10419296	Wdhd1	-2.64	2.685	489.85	185.71
10377405	Aurkb	-2.65	2.475	2005.92	755.6
10474769	Bub1b	-2.65	3.089	671.86	253.81
10389395	Brip1	-2.66	2.516	286.69	107.63
10562989	Cpt1c	-2.66	12.728	252.84	95.08
10352767	Nek2	-2.66	3.51	564.54	212.44
10564177	Snord116	-2.66	6.459	144.32	54.3
10474875	Casc5	-2.67	2.678	721.85	270.86
10469167	Sfmbt2	-2.67	6.155	109.37	40.93
10490838	Fabp5	-2.68	3.825	5690.66	2125.24
10400589	Mis18bp1	-2.69	2.955	623.38	231.99
10391461	Brca1	-2.70	2.888	317.53	117.74
10547943	Ncapd2	-2.71	3.033	1016.75	375.39
10573261	Asf1b	-2.73	2.581	1466.9	537.09
10540085	Fbln2	-2.74	9.829	363.9	132.87
10602009	Rnf128	-2.74	7.936	329.97	120.38
10462132	E030010A14	-2.76	7.78	1059.77	383.89
10562563	Ccne1	-2.77	2.566	1044.51	376.84
10352048	Exo1	-2.77	2.575	339.59	122.76
10462632	Kif20b	-2.77	3.202	396.91	143.43
10515431	Kif2c	-2.77	2.964	440.78	158.85
10419062	Sh2d4b	-2.77	5.944	629.98	227.82
10564183	Snord116	-2.77	6.551	152.85	55.19
10419323	Dlgap5	-2.78	2.834	695.4	250.31
10474902	Rad51	-2.79	2.64	421.89	151.24
10571680	Mlf1ip	-2.80	2.402	289.61	103.42
10585381	Slc35f2	-2.80	9.641	1373.33	489.74
10507112	Stil	-2.80	2.66	447.59	159.75
10485718	Ano3	-2.81	5.847	426.46	151.66
10406968	Cenpk	-2.81	2.866	161.2	57.44
10503264	Ccne2	-2.82	2.546	473.76	167.85
10474984	Nusap1	-2.82	2.533	1665.56	590.95
10564159	Snord116	-2.83	7.663	151.17	53.51
10400510	Clec14a	-2.84	3.7	1071.57	376.81
10548086	Rad51ap1	-2.86	2.841	234.06	81.92
10462866	Cep55	-2.87	3.265	798.49	278.21
10454709	Kif20a	-2.87	3.056	1142.86	398.12
10486255	Oip5	-2.88	2.62	231.65	80.44
10544596	Tmem176b	-2.88	20.094	3841.83	1333.08
10564161	Snord116	-2.89	6.72	139.35	48.22
10420426	F630043A04	-2.90	2.72	512.91	177.01
10483401	Spc25	-2.90	2.6	666.51	230.2
10399391	Gen1	-2.91	2.746	605.28	207.85
10394978	Rrm2	-2.92	2.818	1818.08	622.44
10438378	Cdc45	-2.93	3.126	1112.12	379.65
10563883	Depdc1a	-2.93	2.476	324	110.72
10563780	E2f8	-2.93	3.123	720.53	245.64
10564163	Snord116	-2.93	6.902	139.77	47.67

10564167	Snord116	-2.93	6.902	139.77	47.67
10564171	Snord116	-2.93	6.902	139.77	47.67
10564173	Snord116	-2.93	6.902	139.77	47.67
10564175	Snord116	-2.93	6.902	139.77	47.67
10564179	Snord116	-2.93	6.902	139.77	47.67
10564181	Snord116	-2.93	6.902	139.77	47.67
10564185	Snord116	-2.93	6.902	139.77	47.67
10564187	Snord116	-2.93	6.902	139.77	47.67
10564189	Snord116	-2.93	6.902	139.77	47.67
10564191	Snord116	-2.93	6.902	139.77	47.67
10564193	Snord116	-2.93	6.902	139.77	47.67
10564195	Snord116	-2.93	6.902	139.77	47.67
10564197	Snord116	-2.93	6.902	139.77	47.67
10564199	Snord116	-2.93	6.902	139.77	47.67
10564201	Snord116	-2.93	6.902	139.77	47.67
10564205	Snord116	-2.93	6.902	139.77	47.67
10564207	Snord116	-2.93	6.902	139.77	47.67
10361375	Fbxo5	-2.98	2.419	759.11	254.61
10487480	Bub1	-3.00	2.872	920.94	306.72
10577508	Ckap2	-3.01	2.828	751.29	249.51
10530615	Ociad2	-3.02	4.962	599.76	198.64
10462796	Kif11	-3.03	2.854	1731.25	571.75
10359890	Nuf2	-3.03	2.814	698.62	230.74
10496204	Cenpe	-3.04	3.361	635.37	208.77
10497122	Depdc1a	-3.06	2.446	346.44	113.2
10385248	Hmmr	-3.06	3.214	395.19	129.14
10399087	Ncapg2	-3.09	2.685	511.9	165.77
10427336	Nckap1l	-3.09	7.879	314.39	101.71
10360985	Cenpf	-3.10	3.525	546.25	176.46
10521498	Crmp1	-3.10	10.292	1335.29	430.59
10487340	Ncaph	-3.11	2.914	1563.19	502.16
10450519	Tcf19	-3.11	2.371	2445.33	787.39
10350838	2810417H13	-3.12	2.563	1654.55	530.37
10521731	Ncapg	-3.12	2.751	489.83	156.93
10460738	Cdca5	-3.15	3.132	611.29	193.93
10438358	41157	-3.17	6.209	1436.45	452.43
10466888	Glis3	-3.18	8.541	1540.44	484.9
10548729	Mansc1	-3.18	13.713	182.46	57.41
10502845	Fam73a	-3.20	4.956	288.22	89.97
10436967	Cbr1	-3.22	13.243	319.21	98.99
10462702	Hectd2	-3.23	6.828	255.85	79.19
10368918	Sobp	-3.24	8.06	983.46	303.11
10571252	Tex15	-3.27	7.569	60.54	18.52
10450957	Cenpq	-3.29	3.05	297.22	90.31
10485745	Ano3	-3.32	6.713	501.56	151.09
10448506	Ccnf	-3.33	3.464	714.59	214.66
10586448	2810417H13	-3.41	2.569	1191.33	349.01
10559509	Cdc42ep5	-3.48	7.643	667.83	191.7
10534168	Auts2	-3.51	5.271	534.44	152.13
10429515	Lynx1	-3.52	10.695	1128.79	321.11

10420877	Esco2	-3.55	2.699	789.27	222.6
10604694	Mtap7d3	-3.56	7.118	82.4	23.15
10381096	Igfbp4	-3.64	7.545	2809.59	772.44
10536667	Ptprz1	-3.70	4.145	580.5	156.78
10357488	Cd55	-3.72	8.062	277.97	74.64
10538150	Tmem176a	-4.03	16.334	1267.92	314.69
10429520	Ly6d	-4.13	5.748	412.74	99.89
10467206	Ppp1r3c	-4.60	5.25	578.01	125.58
10607206	Il13ra2	-6.07	5.254	946	155.9
10473444	Aplnr	-6.18	14.766	1060.33	171.6
10604528	Mbnl3	-7.18	10.086	552.59	77
10553833	Ndn	-7.67	9.394	416.64	54.32
10599174	Il13ra1	-9.95	25.008	363.69	36.54
10400609	Mdga2	-9.98	15.251	953.7	95.52
10400607	Mdga2	-10.57	11.749	1043.61	98.76
10492964	Cd5l	-15.86	6.37	1823.6	114.98

Supplementary Table S2. Clinico-pathological data of pancreatic carcinoma patients.

Patient number	Gender	Age (years)	Tumor diameter	pG	pT	pN	pM
85	F	61	>4 cm	3	3	0	0
221	F	53	>4 cm	3	4	1	0
76	M	60	<2 cm	2	3	1	0
61	F	59	2-4 cm	2	3	1	0
59	F	63	2-4 cm	3	3	0	0
247	F	70	<2 cm	2	3	0	0
3	M	53	2-4 cm	3	3	1	0
301	M	33	<2 cm	3	3	1	0
66	F	55	2-4 cm	2	2	0	0
214	M	46	>4 cm	2	3	1	0
46	M	68	2-4 cm	3	3	0	0
216	F	56	2-4 cm	3	3	1	0
47	M	59	>4 cm	3	3	1	0
73	F	75	<2 cm	2	3	0	0
209	M	73	2-4 cm	3	2	1	0
228	F	75	2-4 cm	2	3	1	0
10	M	52	2-4 cm	3	3	0	0
220	M	58	2-4 cm	3	3	0	0