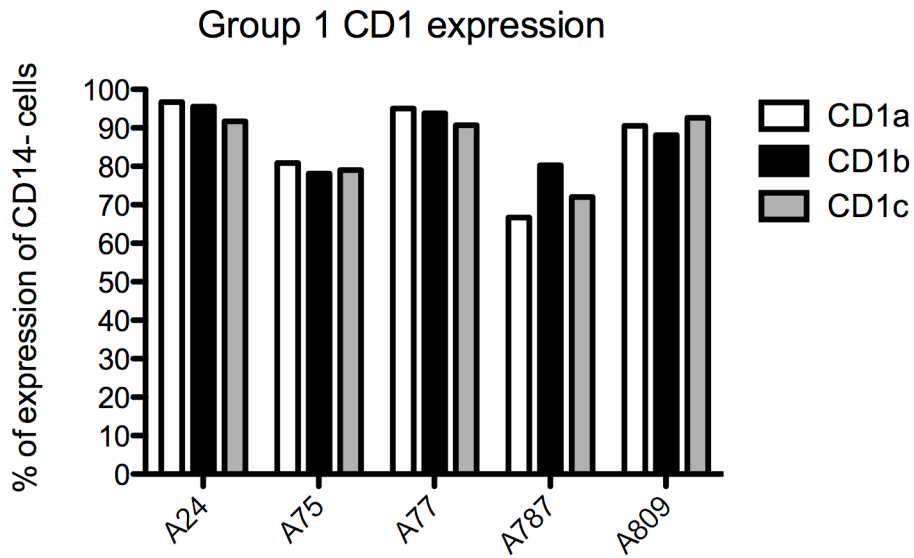


Supplemental Table 1

Patient	MA	Smear results	ESAT-6	CFP-10	Type of TB	Ethnicity
A32	0	+	168	18	Extra-pulmonary	Mixed European Descent
A33	0	n/a	110	316	Extra-pulmonary	Indian Sub-continent
A57	0	+	32	266	Pulmonary	Indian Sub-continent
A64	0	n/a	134	50	Extra-pulmonary	Indian Sub-continent
A62	3	-	342	842	Pulmonary	Indian Sub-continent
A23	4	n/a	4	74	Extra-pulmonary	Black African
A56	12	n/a	528	240	Pulmonary	Indian Sub-continent
A10	13	n/a	32	78	Extra-pulmonary	Indian Sub-continent
A36	13	n/a	48	18	Pulmonary	Indian Sub-continent
A14	14	n/a	n/a	n/a	Pulmonary	Black African
A24	14	+	58	142	Pulmonary	Mixed European Descent
A47	17	n/a	210	212	Pulmonary	Mixed European Descent
A49	20	n/a	1092	308	Extra-pulmonary	Indian Sub-continent
A27	22	+	832	952	Pulmonary	Indian Sub-continent
A51	22	+	58	112	Pulmonary	Indian Sub-continent
A58	23	-	1136	62	Pulmonary	Indian Sub-continent
A54	25	+	76	144	Extra-pulmonary	Indian Sub-continent
A15	29	+	n/a	n/a	Extra-pulmonary	Black African
A2	31	n/a	536	356	Extra-pulmonary	Indian Sub-continent
A16	33	+	464	344	Extra-pulmonary	Indian Sub-continent
A13	39	+	n/a	n/a	Pulmonary	Indian Sub-continent
A55	39	n/a	n/a	n/a	Extra-pulmonary	Indian Sub-continent
A17	66	+	136	22	Pulmonary	Black African
A28	69	n/a	60	888	Extra-pulmonary	Indian Sub-continent
A63	77	n/a	16	16	Extra-pulmonary	Black African
A48	87	n/a	790	486	Pulmonary	Black African
A53	102	n/a	32	10	Extra-pulmonary	Black African
A60	106	n/a	266	542	Pulmonary	Indian Sub-continent
A22	259	+	174	80	Pulmonary	Black African
A52	803	n/a	500	372	Extra-pulmonary	Black African

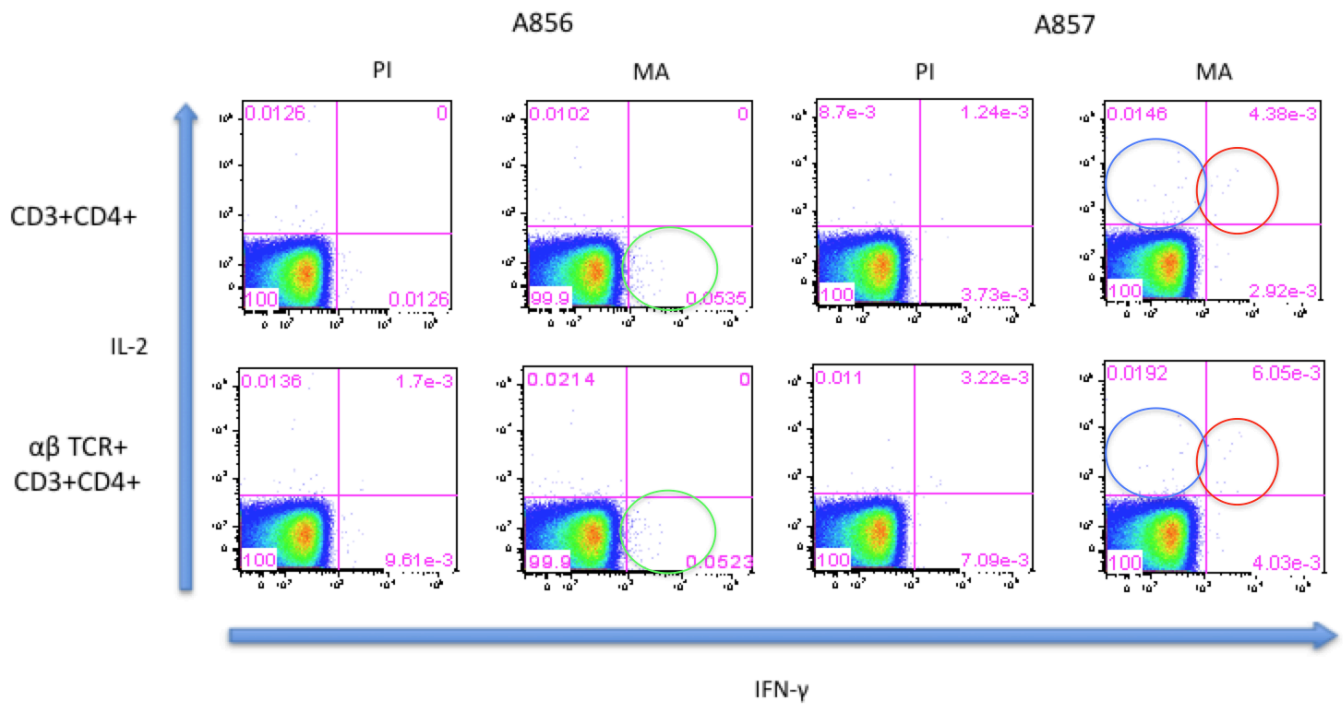
Supplemental Table 1. Clinical and immunological characteristics of the individual untreated TB patients from Figure 1 tested at diagnosis for IFN- γ MA-specific responses by ex vivo ELISpot. MA=mycolic acid; n/a=not available. Numbers shown in the MA, ESAT-6 and CFP10 columns represent the number of spot forming cells per 10^6 PBLs observed in IFN- γ ELISpot.

Supplemental Figure 1



Supplemental Figure 1. Group 1 CD1 expression on monocyte-derived DCs. Blood monocytes were grown in the presence of IL-4 and GM-CSF, after 6 days of culture they were stained with anti-CD14, anti-CD86 and anti-CD1a, anti-CD1b or anti-CD1c.

Supplemental Figure 2



Supplemental Figure 2. MA-specific responses derive from $\alpha\beta$ -TCR+CD3+CD4+ cells. MA-stimulated PBLs from two TB patients were stained with anti-CD3, anti-CD4, anti- $\alpha\beta$ TCR, anti-IFN- γ and anti-IL-2 using the cytokine secretion assay. Results are shown from cell populations gated on CD3+CD4+ cells (upper panels) or on CD3+CD4+ $\alpha\beta$ -TCR+ cells (bottom panels).