

Supplemental Figure 1: IL-23 levels are reduced in HDM asthmatic *Tlr6*^{-/-} mice.

Transcript expression of *Il23* in whole lungs of WT or *Tlr6*^{-/-} mice challenged with HDM for 6 weeks. Data represent mean \pm SEM of two independent experiments, and n=4-5 mice/group. *P<0.05 compared to WT control mice.

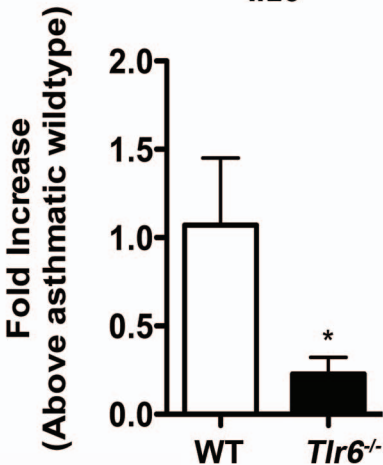
Supplemental Figure 2: *Tlr6*^{-/-} DCs have impaired ability to activate memory Th17 cells.

Percentage of CD4⁺IL-17⁺T cells (A) and IL-17A levels (B) observed in coculture of WT and *Tlr6*^{-/-} DCs with OTII transgenic Th17 cells differentiated in vitro for 6 days with anti-IL-4, anti-IFN- γ and rTGF- β . Data represents mean \pm SEM of n=5 mice/group.

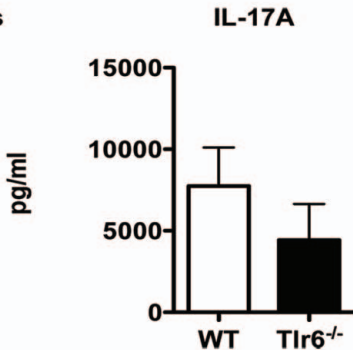
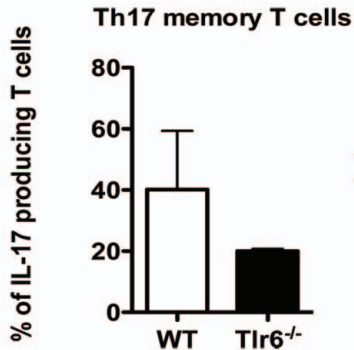
Supplemental Figure 3: *Tlr6*^{-/-} DCs have an impaired ability to express TGF-b. (A)

Percentage of CD11c⁺CD11b⁺F4/80^{neg} expressing LAP-TGF-b in lungs from WT and *Tlr6*^{-/-} mice at day 26 after conidia. (B) Transcript expression of *Tgfb1* in bone marrow-derived DC from WT allergic mice stimulated in vitro with Aspergillus, ovalbumin, house dust mite or cochroach antigens in the presence of medium alone or anti-dectin-1 blocking antibody. (C) Transcript expression of *Tgfb1* in bone marrow-derived DC from WT and *Tlr6*^{-/-} naive mice stimulated in vitro with different antigens. Data represents mean \pm SEM of n=5 mice/group. *p<0.05 compared to WT under the same condition or medium.

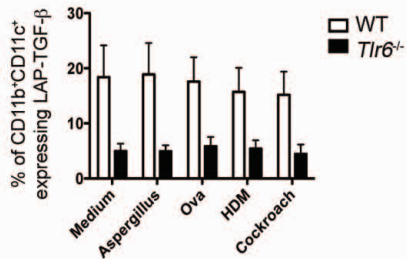
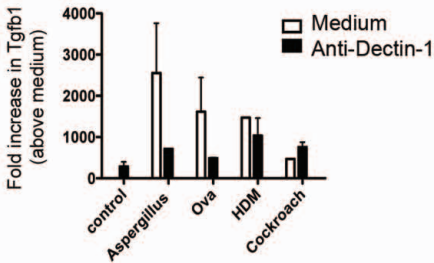
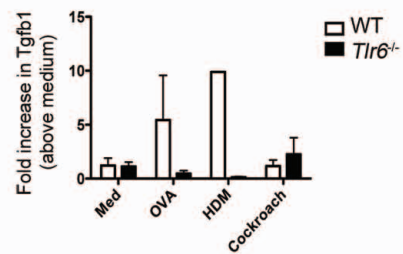
Il23



Supplemental Figure 1



Supplemental Figure 2

A Allergic Lung DC**B** Allergic BMDC**C** Naive BMDC

Supplemental Figure 3