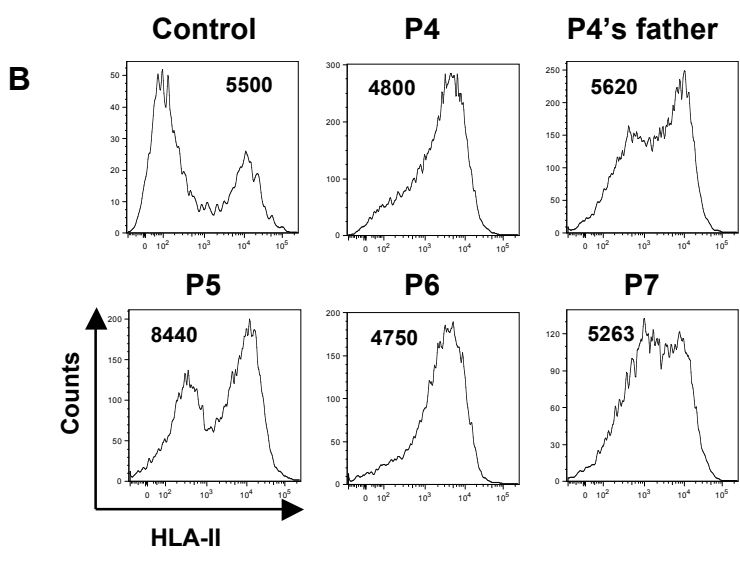
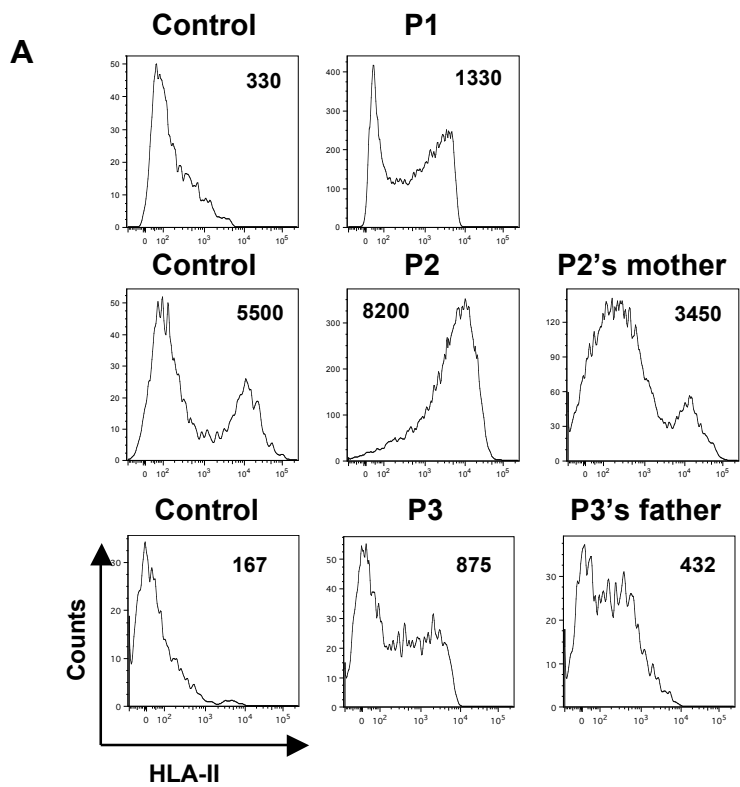


**Supplementary Table 1. Distribution of somatic *TNFRSF6* mutations in distinct cell subsets**

Patient	Mutation	CD4	CD8	DN	B	NK	Monocytes	Buccal epithelial cells
<b>1</b>	Ex5:L159fsX186 (germline)	100	100	100	100	100	100	100
	Ex9:V275fsX280 (somatic)	<2.5	<2.5	90	ND	ND	ND	<2.5
<b>2</b>	Ex4:E116G (germline)	100	100	100	100	100	100	100
	Ex2:G34X (somatic)	18	35	100	22	10	7	18

The percentage of cells carrying the somatic *TNFRSF6* mutation was determined for Patients 1 and 2 by sequencing the cloned PCR products from DNA extracted from FACS-sorted cells.



**Supplemental Figure**

### **Supplementary Figure 1: HLA-II expression by DN T cells**

HLA-II expression by DN T cells from patients presenting with germline heterozygous plus somatic heterozygous *TNFRSF6* mutations (A) or germline heterozygous *TNFRSF6* mutations plus uniparental disomy (B) and their healthy relatives carrying the only germline heterozygous mutations. Numbers in bold type indicate the mean fluorescence intensity of HLA-II expression in the whole population of DN T cells.