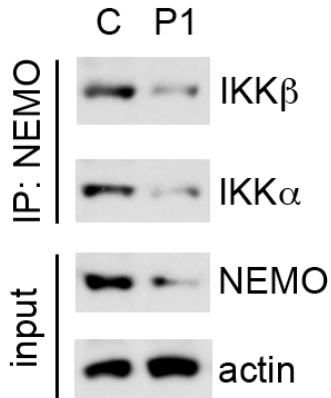


Supplemental Figure 1.

NEMO binds to its associated kinases in patient cells. MoDCs were prepared from patient 1. NEMO was immunoprecipitated with a rabbit anti-NEMO antibody followed by immunoblotting with antibodies that recognize IKK alpha and IKK beta.



Supplemental Figure 2. NEMO does not exhibit increased nuclear translocation in response to LPS treatment. Control and patient MoDCs were stimulated with LPS (2.5 μ g/ml) for the indicated times then proteins were extracted and subjected to western blot analysis. Blots were probed with antibodies to NEMO, IKK beta, or USF2.

