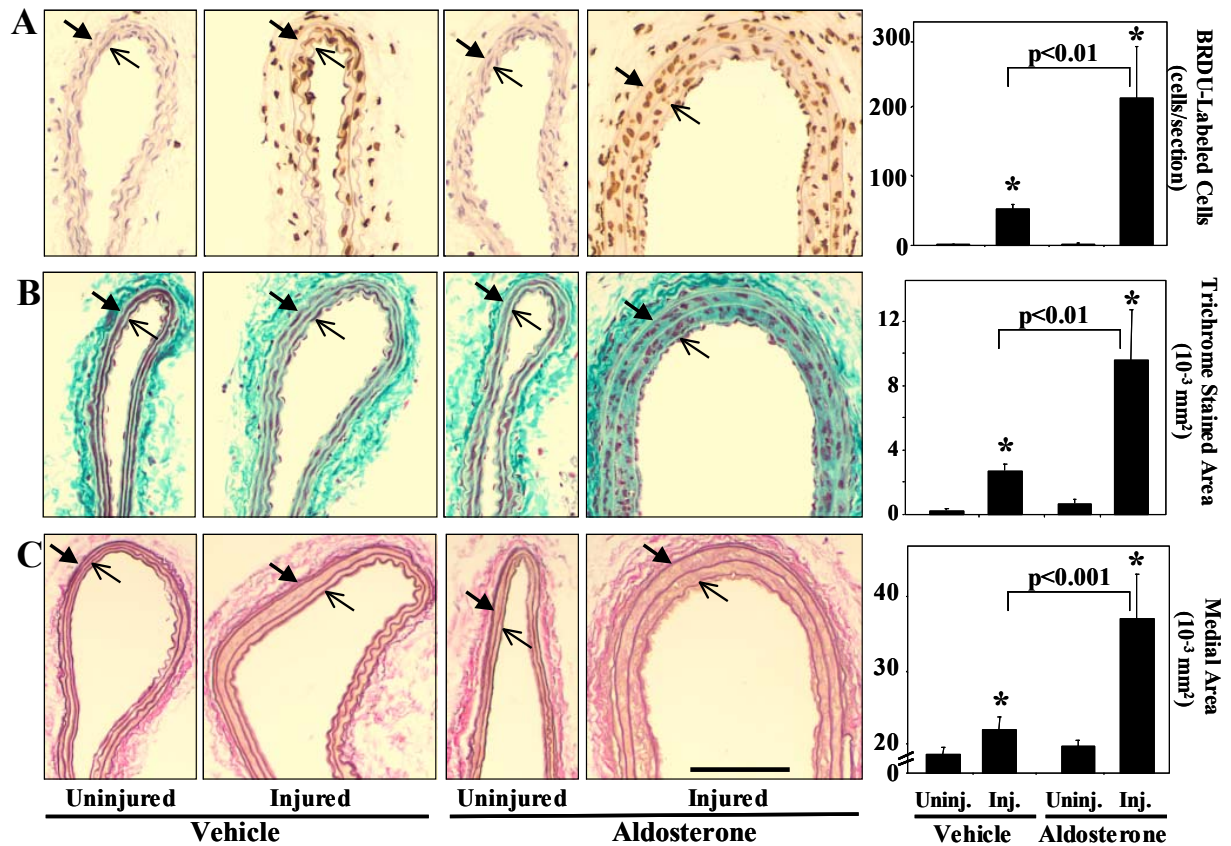
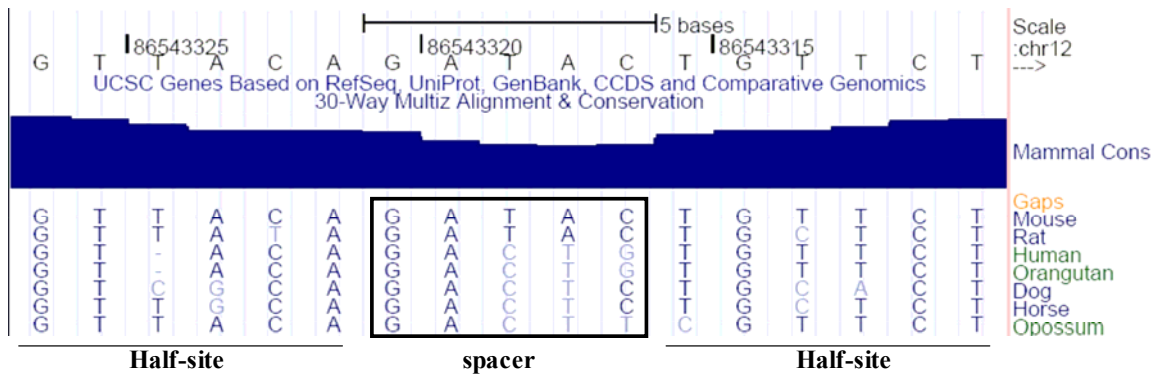


SUPPLEMENTAL DATA:



Supplemental Figure 1: Aldosterone Synergizes with Endothelial Injury to Promote Vascular Remodeling *In Vivo*. Mice underwent unilateral carotid wire injury with BrDU pump implantation one day after insertion of a vehicle- or aldosterone-infusing pump. Bilateral carotid arteries were harvested 14 days after injury and sections were stained and measurements made between the internal elastic lamina (open arrow) and the external elastic lamina (closed arrow) of: (A) BrDU positive cell count to quantify medial VSMC proliferation after injury, (B) trichrome positive pixel area to quantify medial ECM, and (C) area between elastin-stained laminae to measure medial area. Representative sections are shown on the left, bar=1mm. *p<0.001 vs uninjured vessels.



Supplemental Figure 2: Evolutionarily Conserved MRE in the PIGF Upstream DNA Sequence on Mouse Chromosome 12. UCSC Genome browser image of mouse chromosome (chr) 12, bases 86543311 to 86543327 and homology with 7 mammalian species. Mammal Cons=mammalian conservation. (genome.ucsc.edu, (1)).

(1) Kent WJ, Sugnet CW, Furey TS, Roskin KM, Pringle TH, Zahler AM, Haussler D. The human genome browser at UCSC. *Genome Res.* 2002 Jun;12(6):996-1006.

	Vehicle		Aldosterone		p-value
	Ave	SEM	Ave	SEM	
Baseline					
weight (grams)	23.5	0.38	23.1	0.43	0.39
sbp (mmHg)	145.6	3.52	151.3	3.76	0.28
14 Days Post Vehicle/Aldosterone Pump					
weight (grams)	25.5	0.53	25.3	0.43	0.70
sbp (mmHg)	134.4	2.47	139.1	2.75	0.22
serum aldo (nM)	0.7	0.05	2.0	0.09	<0.001

Supplemental Table 1: C57Bl6 Mice, Animal Characteristics

Primer	Species	Sequence	Source
PGF-5'	Mouse	TCT GCT GGG AAC AAC TCA ACA	Primerbank 6679589a1
PGF-3'	Mouse	GTG AGA CAC CTC ATC AGG GTA T	
Flt1-5'	Mouse	CCA CCT CTC TAT CCG CTG G	Primerbank 2809071a1
Flt1-3'	Mouse	ACC AAT GTG CTA ACC GTC TTA TT	
Flk1-5'	Mouse	GGG TCG ATT TCA AAC CTC AAT GT	Primerbank 27777648a1
Flk1-3'	Mouse	AGA GTA AAG CCT ATC TCG CTG T	
B2MG-5'	Mouse	GCT ATC CAG AAA ACC CCT CAA	
B2MG-3'	Mouse	CAT GTC TCG ATC CCA GTA GAC GGT	
PGF-5'	Human	TGC AGC TCC TAA AGA TCC GTT	Primerbank 20149543a2
PGF-3'	Human	GTC TCC TCC TTT CCG GCT T	
Flt1-5'	Human	CTG TCA TGC TAA TGG TGT CCC	Primerbank 4503749a1
Flt1-3'	Human	TGC TGC TTC CTG GTC CTA AAA TA	
hFLK1-5'	Human	GGC CCA ATA ATC AGA GTG GCA	Primerbank 11321597a1
hFLK1-3'	Human	TGT CAT TTC CGA TCA CTT TTG GA	
GAPDH-5'	Human	TGG GTG TGA ACC ATG AGA AG	
GAPDH-3'	Human	GCT AAG CAG TTG GTG GTG C	

Supplemental Table 2: Real Time PCR Primers