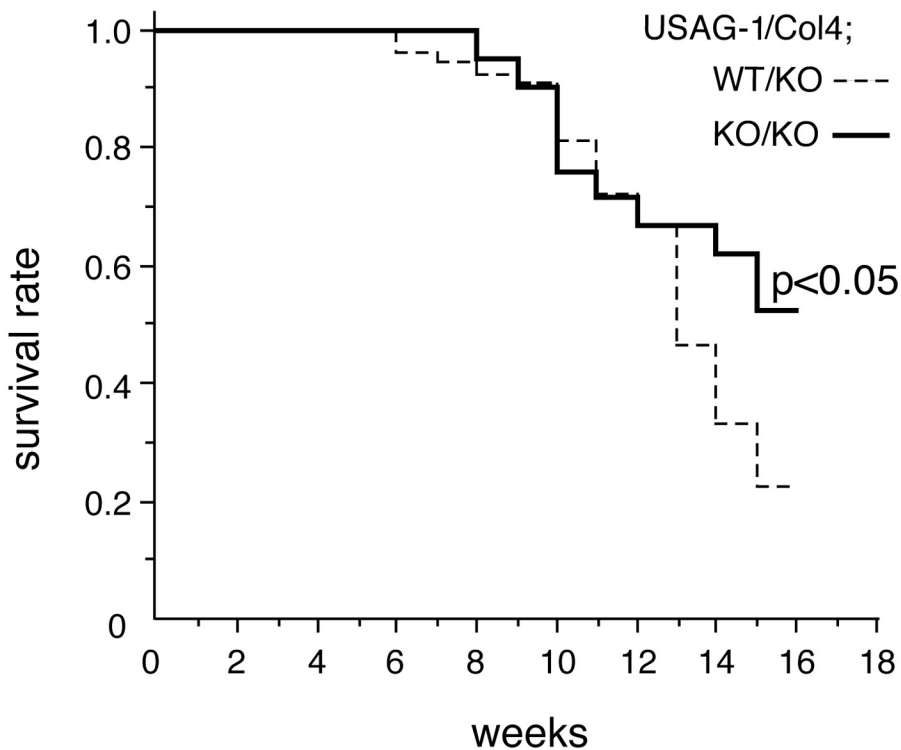
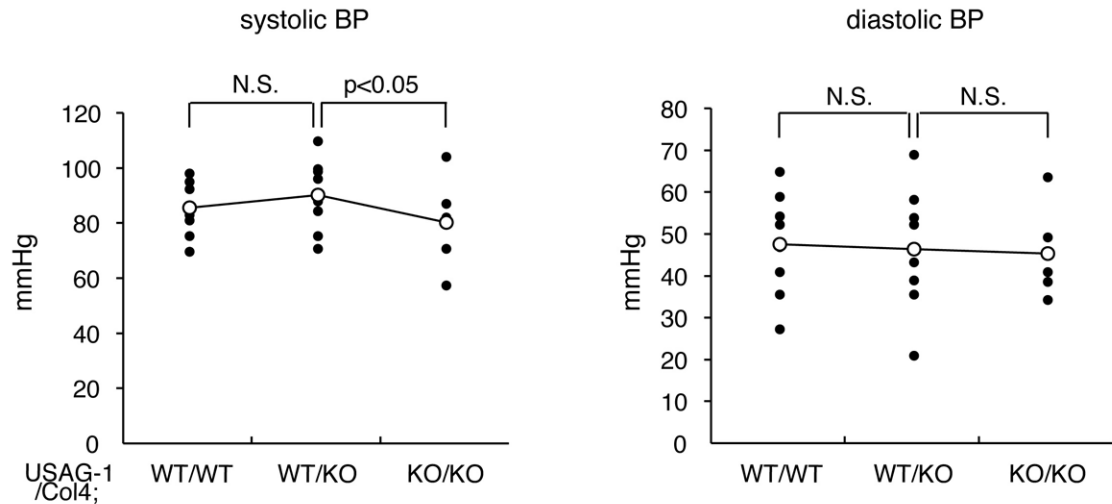


Supplementary figure 1

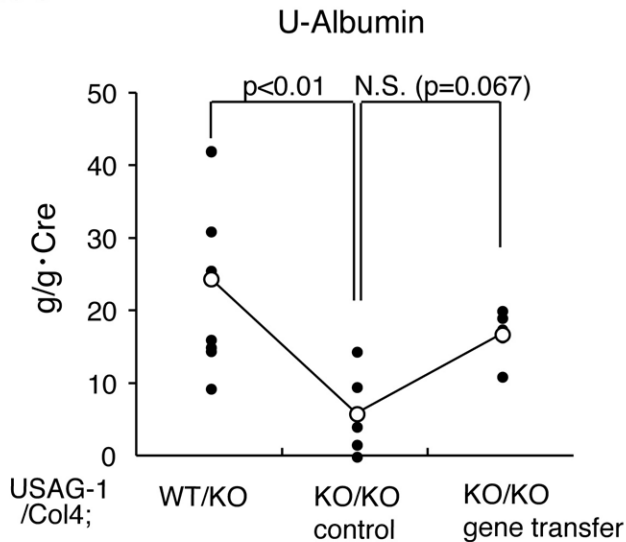


Survival curve of USAG-1^{+/+}:COL4A3^{-/-} mice and USAG-1^{-/-}:COL4A3^{-/-} mice.
Note that there is a significant difference in the survival rate.

Supplementary figure 2



Systolic and diastolic blood pressure in wild-type littermates (WT/WT, n=9), USAG-1^{+/+}:COL4A3^{-/-} mice (WT/KO, n=9), and USAG-1^{-/-}:COL4A3^{-/-} mice (KO/KO, n=5) at 5 weeks of age. Note that systolic blood pressure in KO/KO is slightly lower than that of WT/KO.



Urinary albumin excretion normalized by urinary creatinine in USAG-1^{+/+}:COL4A3^{-/-} mice (WT/KO, n=8), USAG-1^{-/-}:COL4A3^{-/-} mice (KO/KO) with (n=5) or without (n=6) gene transfer. Note that the amount of albuminuria tends to be large in the gene transfer group compared to control group, but the difference is not significant.