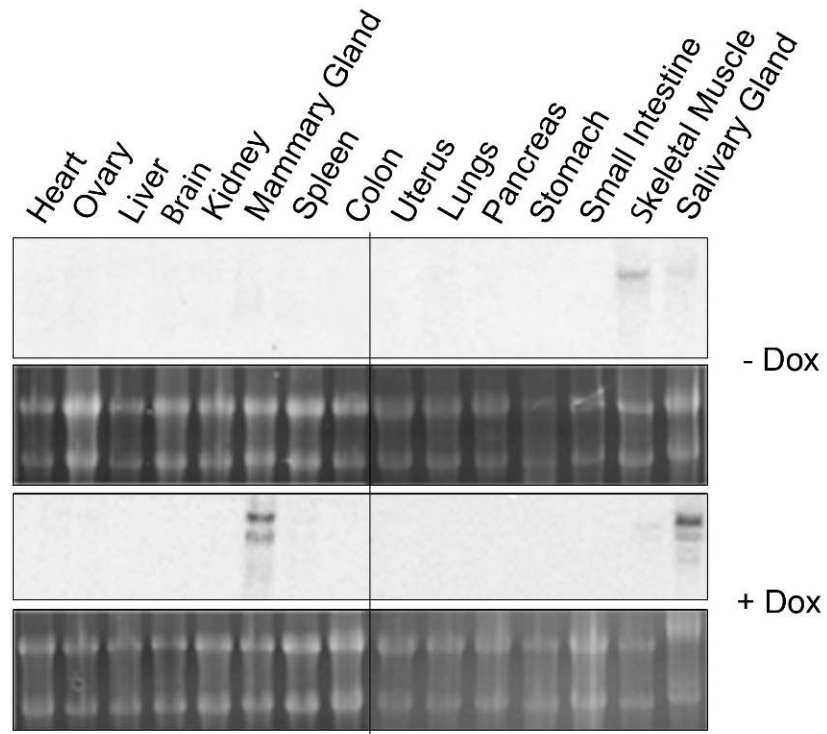
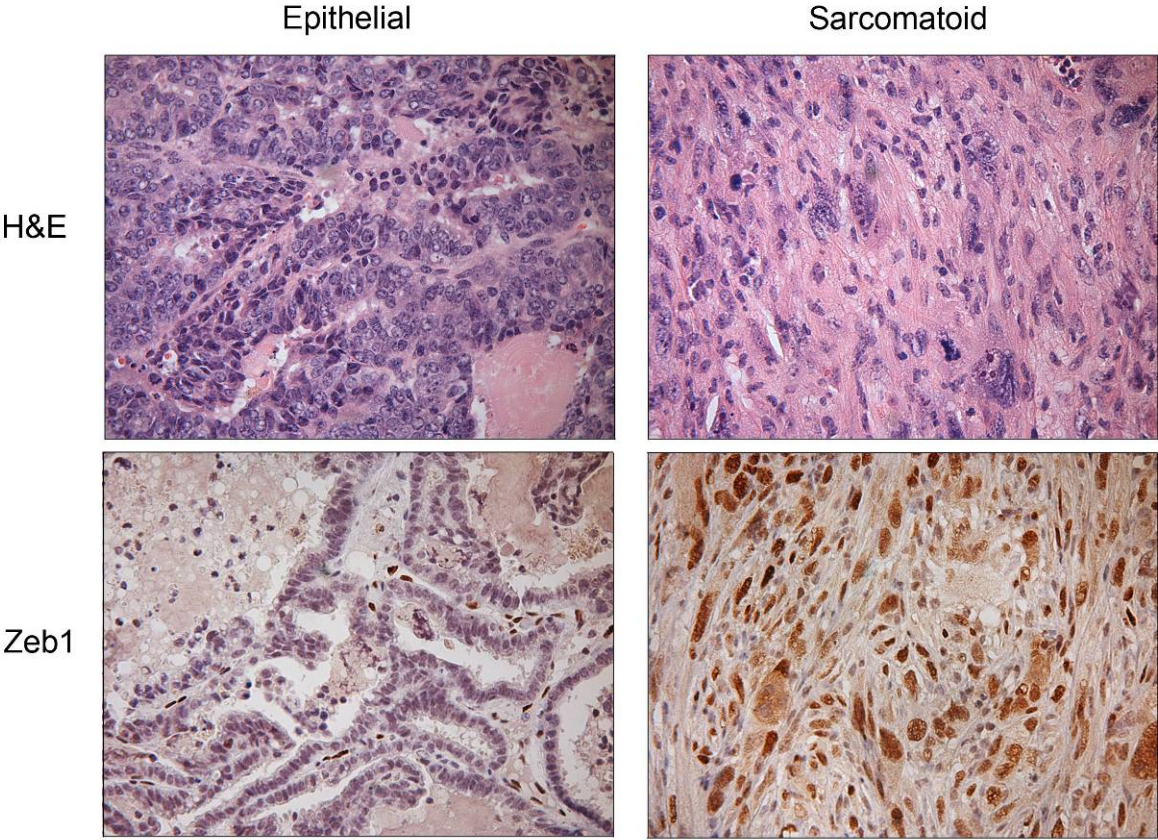


## Supplemental Figure 1



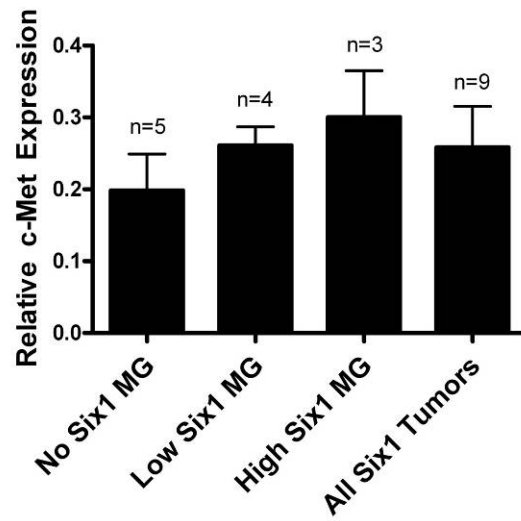
**Supplemental Figure 1.** Six1 expression is inducible, and specific to mammary gland and salivary gland. Northern blot analysis to detect Six1 expression using RNA lysates harvested from a variety of TOSix and control tissues after a 3 day induction with doxycycline (line 4922, line 6239 data not shown). Expression in skeletal muscle is presumed to be endogenous Six1, which is highly expressed in adult skeletal muscle. Separate images denoted by lines.

# Supplemental Figure 2



**Supplemental Figure 2.** Sarcomatoid tumors gain expression of the EMT marker Zeb1. Immunohistochemistry with an antibody to the mesenchymal marker Zeb1 shows a gain of nuclear Zeb1 expression in the sarcomatoid regions (magnification: 40X)

### Supplemental Figure 3



**Supplemental Figure 3.** *c-Met* expression is not significantly changed in mammary glands or tumors overexpressing Six1. qPCR for *c-Met* in mammary glands and tumors taken from TOSix animals reveals no significant change in expression. Error bars represent mean  $\pm$ SEM.