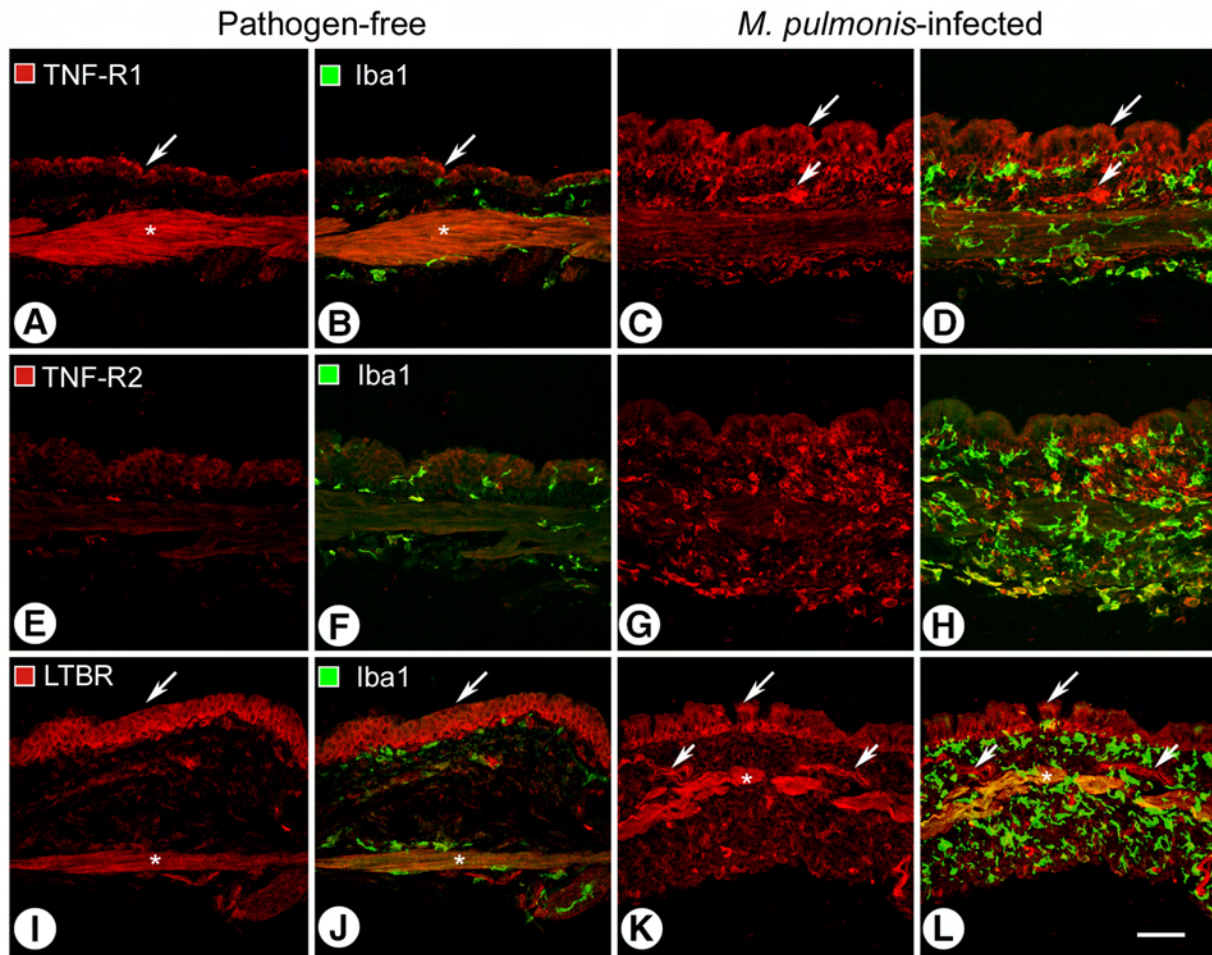
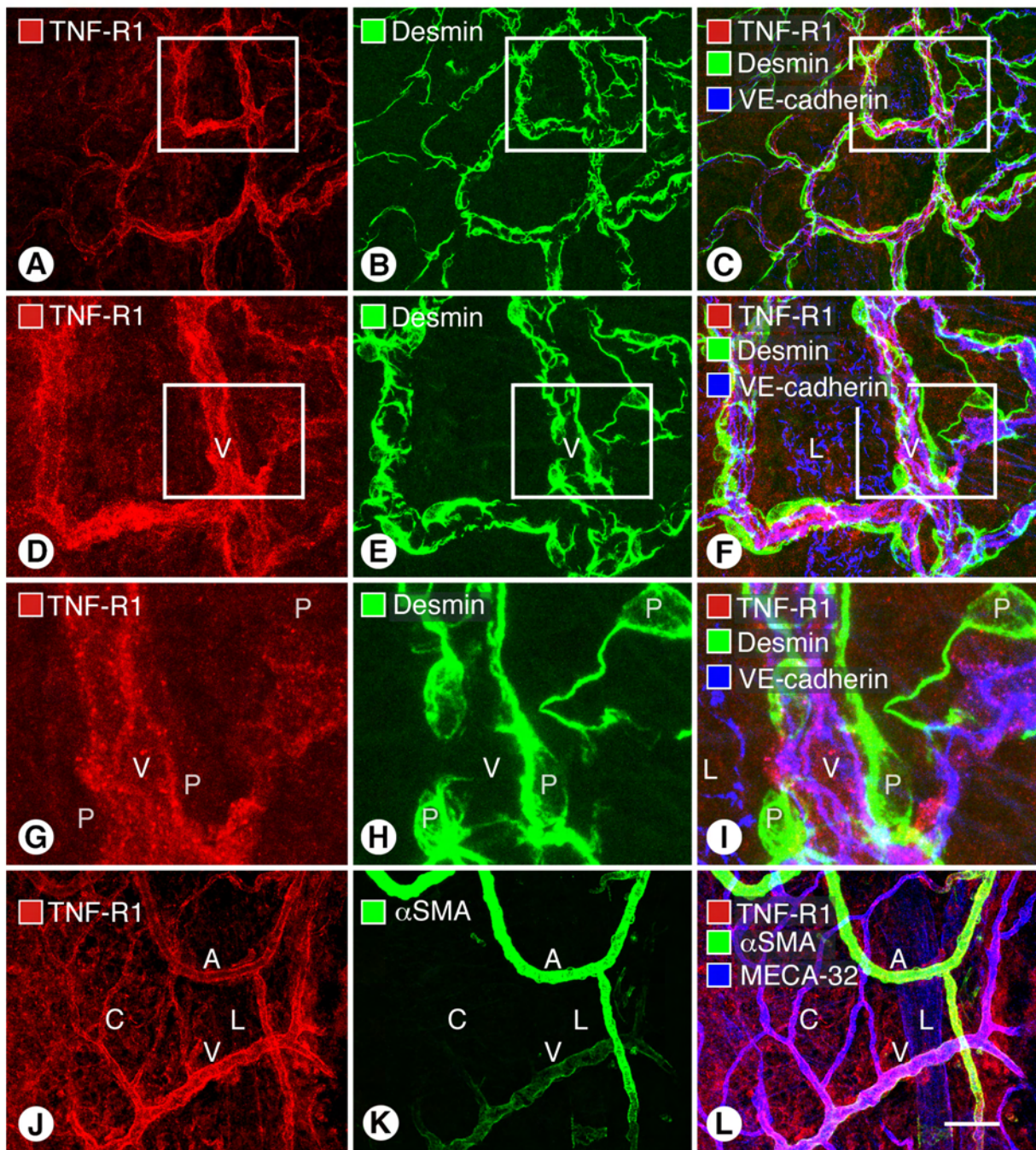


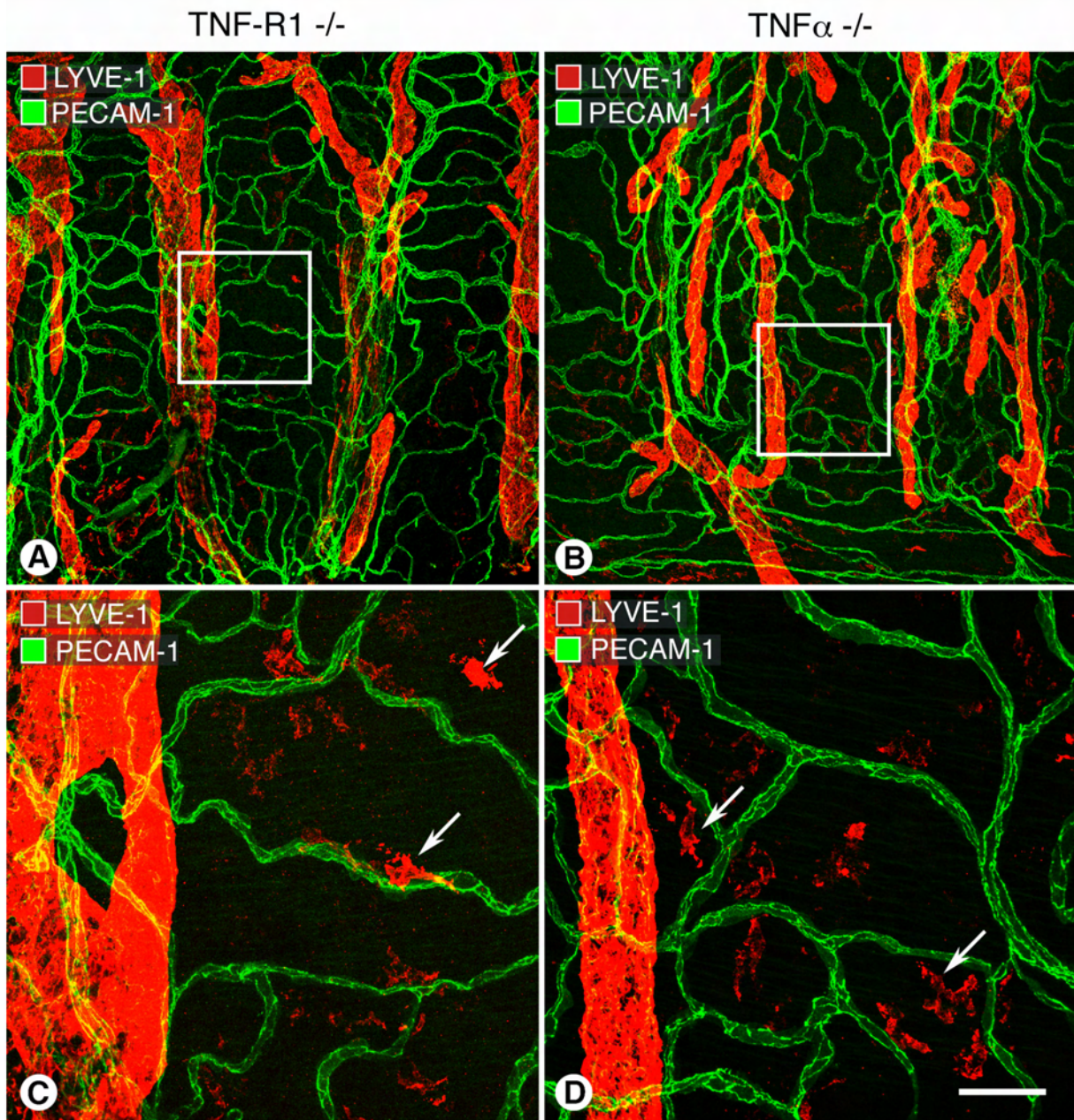
**Supplementary Figure 1. Some LYVE-1 immunoreactive cells are not lymphatic endothelial cells.** Confocal images of pathogen-free mouse tracheas stained for multiple lymphatic markers. Cells that are immunoreactive for LYVE-1 (arrows) and are separate from lymphatics do not express VEGFR-3 (A-C and D-F), Prox1 (G-I), or podoplanin (J-L). Boxed regions in A-C are enlarged in D-F. Scale bar: 200  $\mu$ m for A-C and 50  $\mu$ m for D-L.



**Supplementary Figure 2. Distribution of TNF and lymphotoxin receptors in relation to macrophages and dendritic cells.** **A-D.** TNF-R1 immunoreactivity (red) in 10- $\mu$ m thick sections of pathogen-free and *M. pulmonis*-infected tracheas. Iba1 (green) marks macrophages/dendritic cells. TNF-R1 is strongest in epithelium (arrows), respiratory smooth muscle (\*), and blood vessels (arrowheads). **E-H.** TNF-R2 immunoreactivity is strongest on leukocytes, which are much more abundant in infected airways. **I-L.** Lymphotoxin B receptor (LTBR) immunoreactivity is strong in epithelium (arrows), respiratory smooth muscle (\*), and blood vessels (arrowheads). Scale bar: 50  $\mu$ m.



**Supplementary Figure 3. TNF-R1 immunoreactivity is associated with endothelial cells but not pericytes or smooth muscle cells.** Confocal images of pathogen-free mouse tracheas stained for TNF-R1 immunoreactivity and endothelial cell markers VE-cadherin (A-I) or MECA-32 (J-L) and pericyte marker desmin (A-I) or smooth muscle marker  $\alpha$ -smooth muscle actin (J-L). Boxed regions in A-C are enlarged in D-F and again in G-I. TNF-R1 stains endothelial cells of venules (V) and capillaries (C) more strongly than arterioles (A). Lymphatics (L) and pericytes (cell bodies marked P) are weakly stained or negative for TNF-R1 immunoreactivity. Note the punctate appearance of TNF-R1 staining on venule in G and that desmin and  $\alpha$ -smooth muscle actin ( $\alpha$ SMA) label different populations of mural cells. Scale bar: 200  $\mu$ m for A-C, 50  $\mu$ m for D-F, 20  $\mu$ m for G-I and 50  $\mu$ m for J-L.



**Supplementary Figure 4. Blood vessels and lymphatics appear normal in pathogen-free TNF-R1 -/- and TNF $\alpha$  -/- mice.** Confocal images of tracheas stained for LYVE-1 and PECAM-1. Blood vessels and lymphatics in TNF-R1 -/- (A, C) and TNF $\alpha$  -/- mice (B, D) are indistinguishable from pathogen-free WT mice (compare with Figure 1 in text). Boxed regions in A, B are enlarged in C, D. LYVE-1 immunoreactive cells (arrows) are present, as in WT mice. Scale bar: 200  $\mu$ m for A, B and 50  $\mu$ m for C, D.