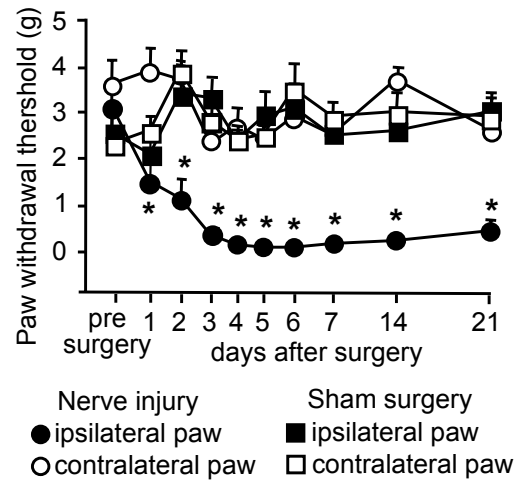


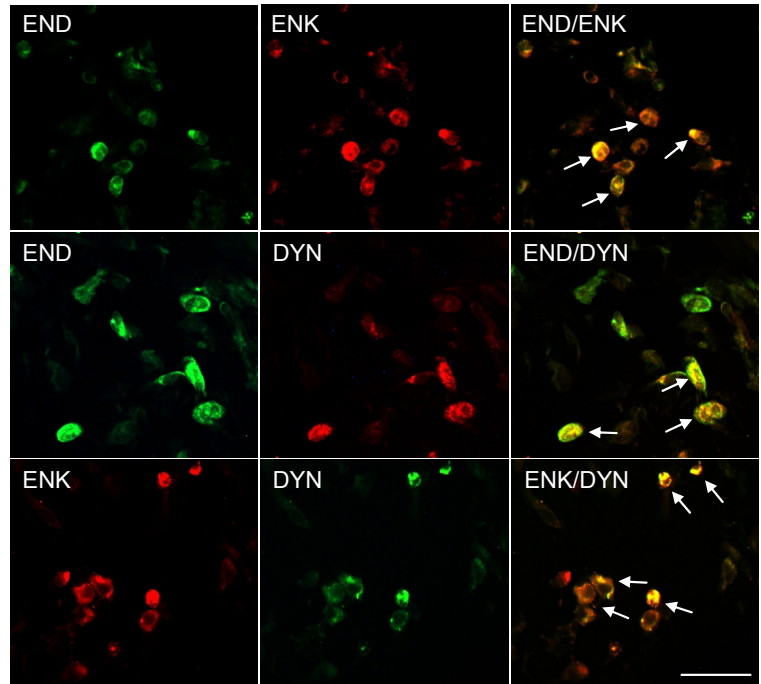
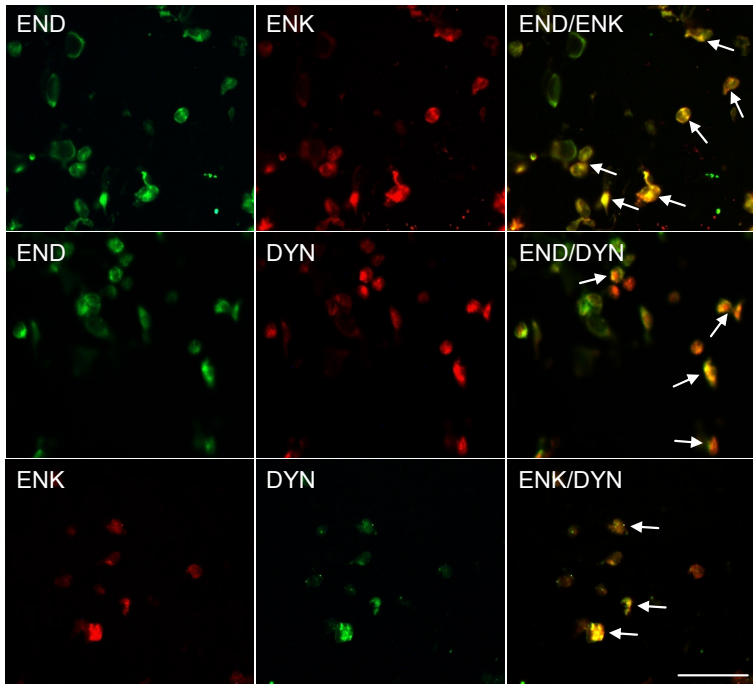
### Development of mechanical allodynia



### Co-expression of opioid peptides in immune cells at the injured nerve

2 days

14 days



**Supplemental Figure 1** Development of mechanical allodynia following CCI. \* $P < 0.05$ , versus pre-surgery thresholds (repeated measures ANOVA, Dunnett's test).

**Supplemental Figure 2** Representative double-immunofluorescent images showing co-expression of  $\beta$ -endorphin (END) with Met-enkephalin (ENK) or with dynorphin A (DYN), and of ENK with DYN in leukocytes (marked with arrows) at injured nerves at 2 days and 14 days following CCI. Scale bars: 50  $\mu\text{m}$ .