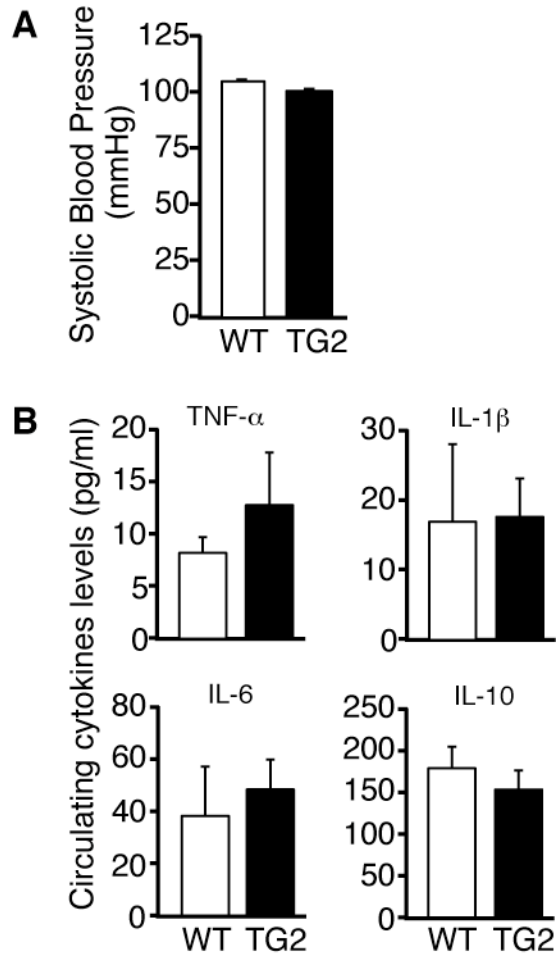
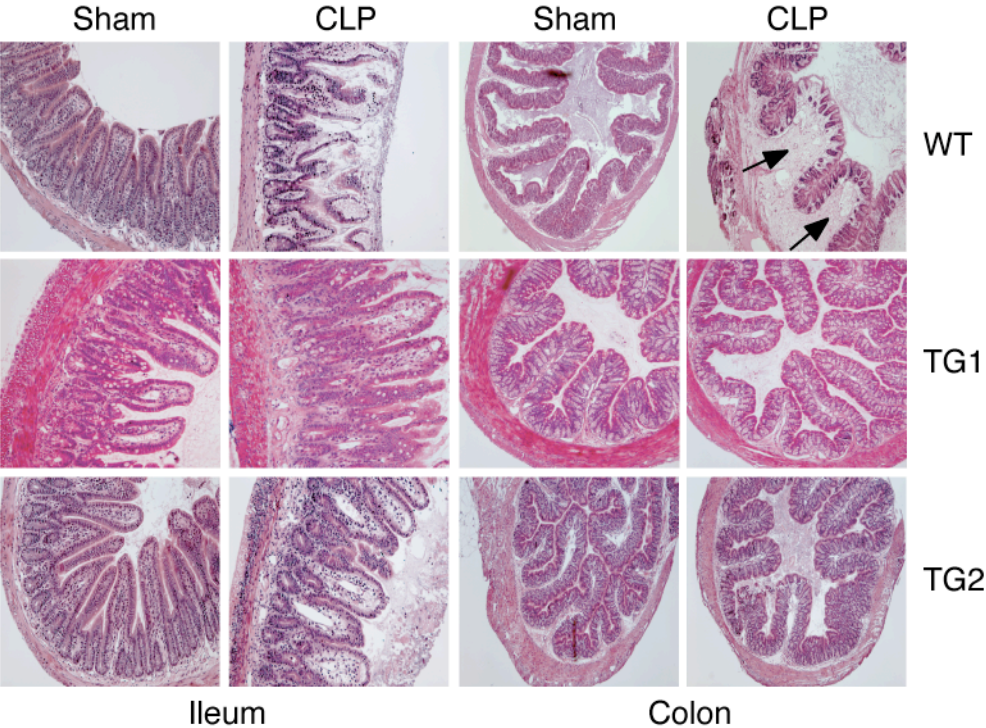


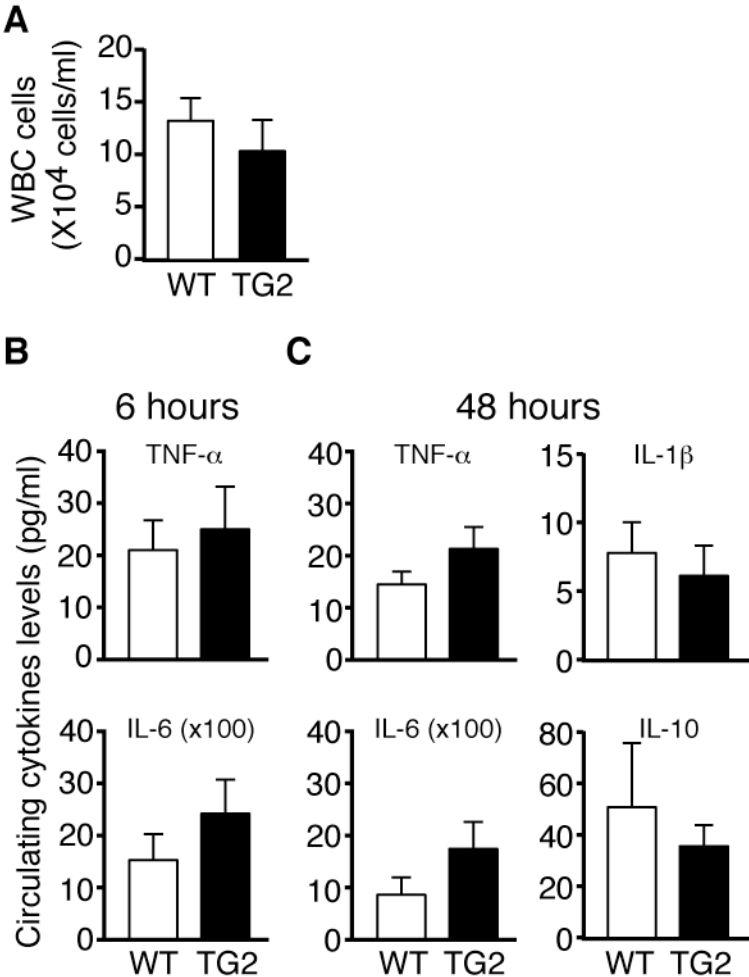
Supplemental Figure 1



Supplemental Figure 2



Supplymental Figure 3



Supplemental Figure 1

Overexpression of hHO-1 does not alter systolic blood pressure or circulating levels of cytokines at baseline. **(A)** Systolic blood pressure (SBP) was assessed in wild-type (WT, n=14) and hHO-1 transgenic (TG2, n=10) mice at baseline. **(B)** Circulating levels of cytokines were measured in the serum of WT (n=6) and TG2 (n=6) mice at baseline. Data presented as mean \pm SEM.

Supplemental Figure 2

Hematoxylin and eosin staining of representative paraffin-embedded ileum and colon tissue sections from WT, TG1, and TG2 mice 48 hours after sham or CLP surgery. Original magnification: X100. Arrows denote submucosal edema in the colon of WT mice after CLP.

Supplemental Figure 3

WT and TG2 mice show a similar inflammatory response after CLP-induced sepsis. **(A)** Circulating leucocytes were counted from blood 48 hours after CLP-induced sepsis from WT (n=5) and TG2 (n=5) mice. Circulating levels of cytokines were measured at **(B)** 6 hours (TNF- α , n=3 in WT and TG2 mice; IL-6, n=10 in WT and TG2 mice) and **(C)** 48 hours (TNF- α , IL-1 β , IL-6, and IL-10; n=5 in WT and n=7 in TG2 mice) after CLP-induced sepsis. Data presented as mean \pm SEM.