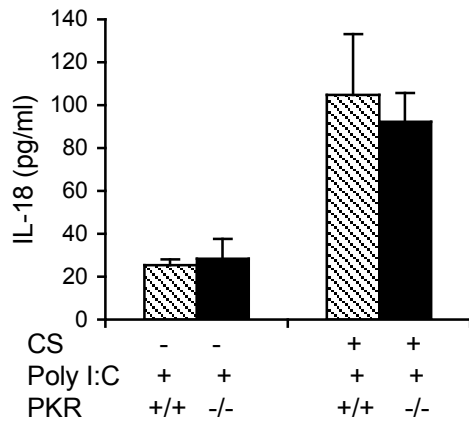
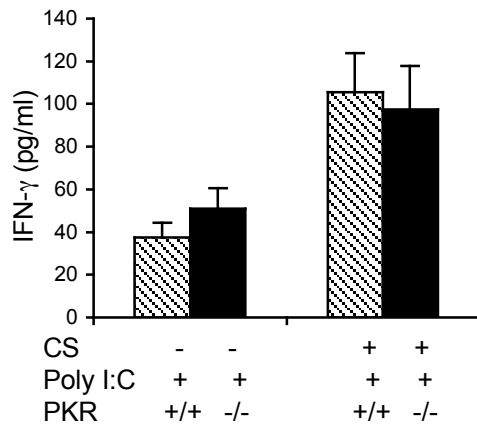


S1



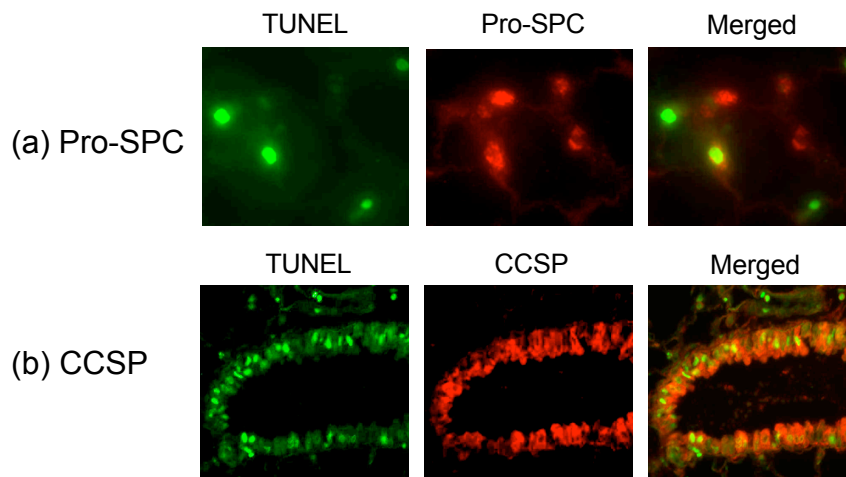
S1. Role of PKR in CS plus Poly (I:C)-induced IL-18 production. WT (+/+) mice and mice with null mutations (-/-) of PKR were exposed to CS(+) or RA (-) for 2 weeks and then given 4 doses of Poly(I:C) (50 μ g) or vehicle control. IL-18 expression in the BAL was evaluated by ELISA.

S2



S2. Role of PKR in CS plus Poly (I:C)-induced IFN- γ production. WT (+/+) mice and mice with null mutations (-/-) of PKR were exposed to CS(+) or RA (-) for 2 weeks and then given 4 doses of Poly(I:C) (50 μ g) or vehicle control. IFN- γ expression in the BAL was evaluated by ELISA.

S3



S3. Localization of TUNEL positive cells in the alveolar and airway epithelial cells. Double labeled IHC was performed using TUNEL stains detected by anti-flourescein antibody (green color) and Alexa 594 labeled anti-Pro-SPC (for alveolar epithelial cells) or anti-CCSP (for airway epithelial cells) antibodies (red color). Double positive cells have a yellow color.