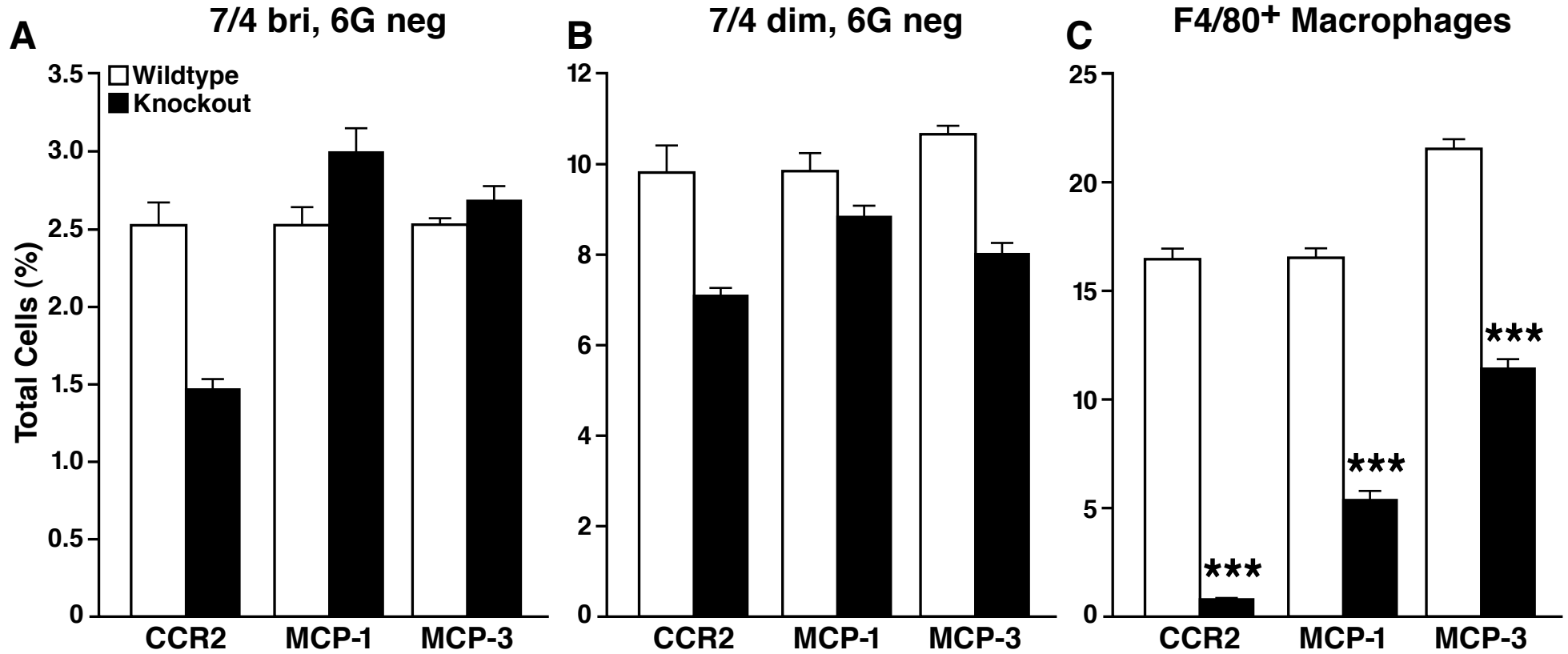


Blood

Peritoneum



Supplemental Figure 1

CCR2 is required for monocyte recruitment from the blood to the peritoneum. Wildtype, CCR2^{-/-}, MCP-1^{-/-}, and MCP-3^{-/-} mice were given intraperitoneal thioglycollate to induce peritonitis. Twenty-four hours later, the monocyte/macrophage profiles of the blood and peritoneum were analyzed by FACS. Despite substantial numbers of both 7/4 bri (A) and 7/4 dim (B) monocytes in the blood, macrophage recruitment to the peritoneum (C) was profoundly reduced in all of the knockout mice.