

**Supplementary Figure 1: Proliferation of auto-reactive CD8 T cells.**

$10^7$  splenocytes from LCMV-gp33/H-2D<sup>b</sup>-specific TCR-transgenic 318 mice were labeled with CFSE and were injected i.v. into naive alb-1 mice or control C57BL/6 mice on day -1. Four and seven days after transfer mice were analyzed for CFSE expression on transferred T cells. Cells are gated on transferred Thy1.1+ CD8+ T cells.

**Supplementary Figure 2: Effect of CpG (ODN-2216) on hepatitis.**

$10^7$  splenocytes from LCMV-gp33/H-2D<sup>b</sup>-specific TCR-transgenic 318 mice were injected i.v. into naive alb-1 mice on day -1. Mice were initially immunized with gp33 (1mg in PBS) and CpG(ODN-1826) on days 0 and 4. A control group of mice was not further treated (without), and a separate group of mice was additionally treated with CpG(ODN-2216) on day 7. ALT activity was analyzed in the serum at day 7 and day 8 (n=3).

**Supplementary Figure 3: Effect of TLR3 ligation on MHC I expression in peripheral organs.**

Naïve C57BL/6 mice, C57BL/6 infected with LCMV (8 days) or C57BL/6 treated with poly(I:C) (24 hours) were analyzed for MHC I in the liver and the pancreas by immunohistology (400x magnification, n=3).

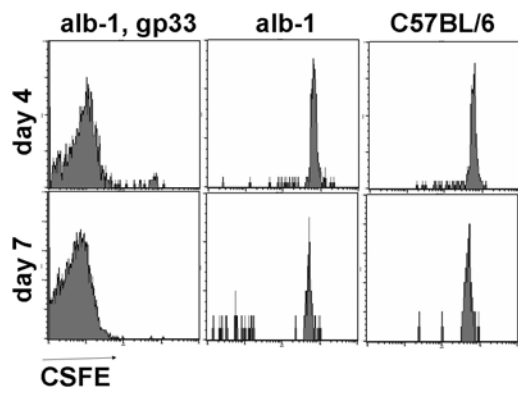
**Supplementary Figure 4: Role of regulatory T cells on alb-1 model.**

**A:**  $10^7$  splenocytes from LCMV-gp33/H-2D<sup>b</sup>-specific TCR-transgenic 318 mice were injected i.v. into naive alb-1 mice or control C57BL/6 mice on day -1. After transfer mice were infected with 200 pfu LCMV WE on day 0 and CD25<sup>+</sup> FoxP3<sup>+</sup> CD4<sup>+</sup> T cells were analyzed in the liver (n=2-4). **B-D:**  $10^7$  splenocytes from LCMV-gp33/H-2D<sup>b</sup>-specific TCR-transgenic 318 mice were injected i.v. into naive C57BL/6 mice. Mice were immunized with gp33 (1mg in PBS) and CpG on day 0 and day 4. A separate group of mice was additionally treated with poly(I:C) on day 7. On day 8 splenocytes and lymphocytes derived from the liver were analyzed for CD25<sup>+</sup> FoxP3<sup>+</sup> CD4<sup>+</sup> T cells (B, n=3, values represent means  $\pm$  SEMS of upper right quadrants) and for CD25<sup>+</sup> FoxP3<sup>+</sup> CD8<sup>+</sup> T cells (C, n=3). Gp33 immunized TCR-transgenic 318 mice were also analyzed for expression of CD25<sup>+</sup> FoxP3<sup>+</sup>. Dot plots show cells gated on gp33 specific cells (D).

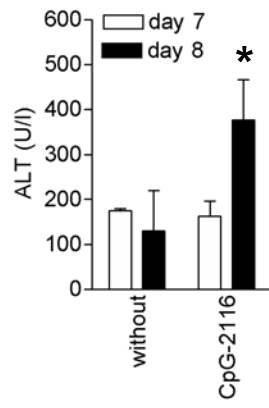
**Supplementary Figure 5:**

Naïve C57BL/6 mice and C57BL/6 mice treated with poly(I:C) for 4 hours were analyzed for IFN- $\alpha$  in the serum (ELISA) and expression of *TNF- $\alpha$*  mRNA (RT-PCR) in the spleen. \* indicates statistical significance of p<0.05 between treatment group and corresponding control group.

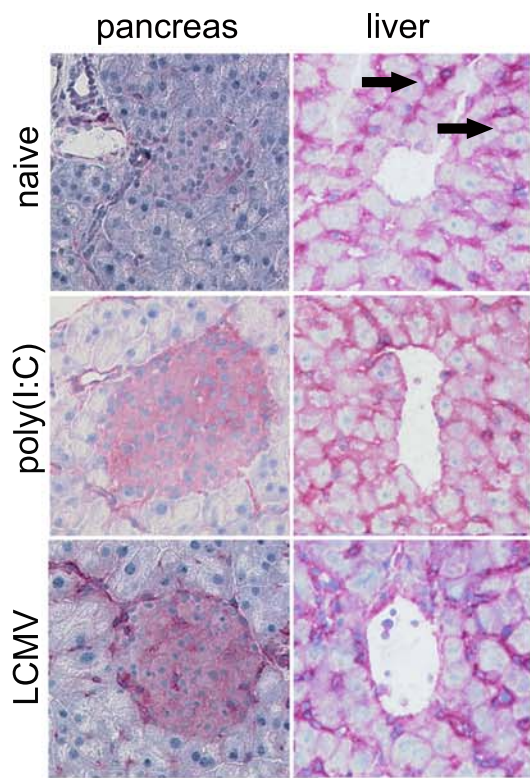
## Supplementary Figure 1



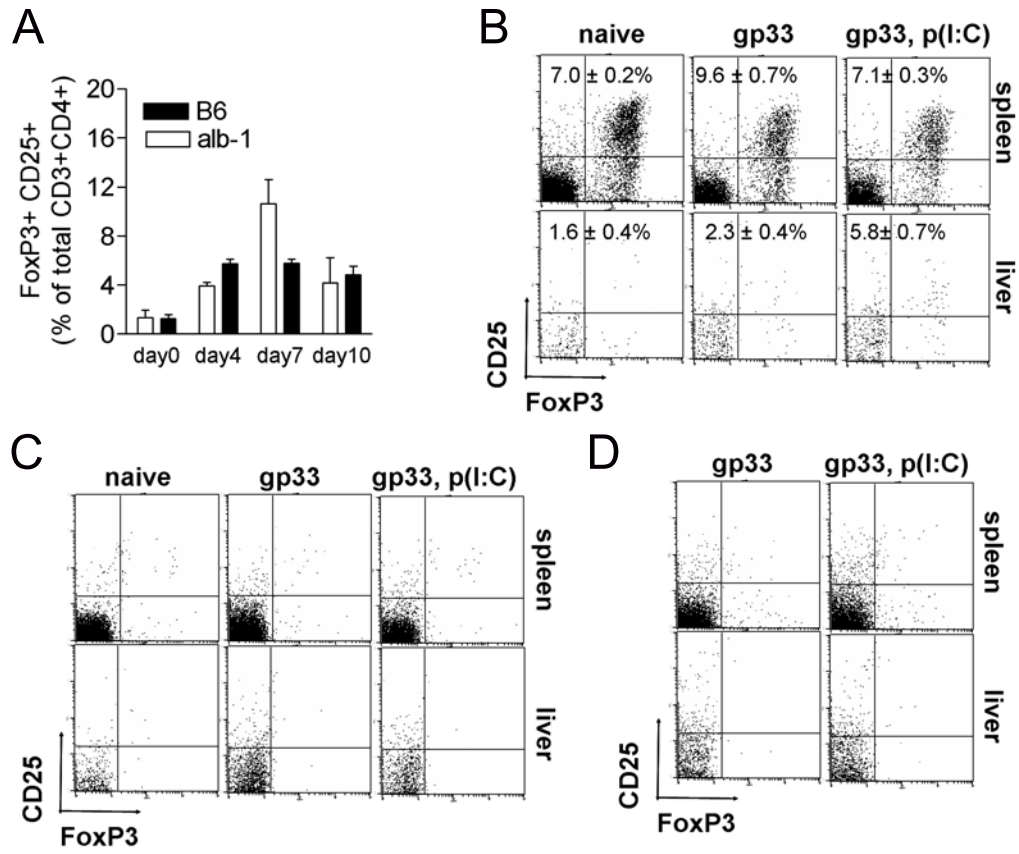
## Supplementary Figure 2



### Supplementary Figure 3



## Supplementary Figure 4



# Supplementary Figure 5

