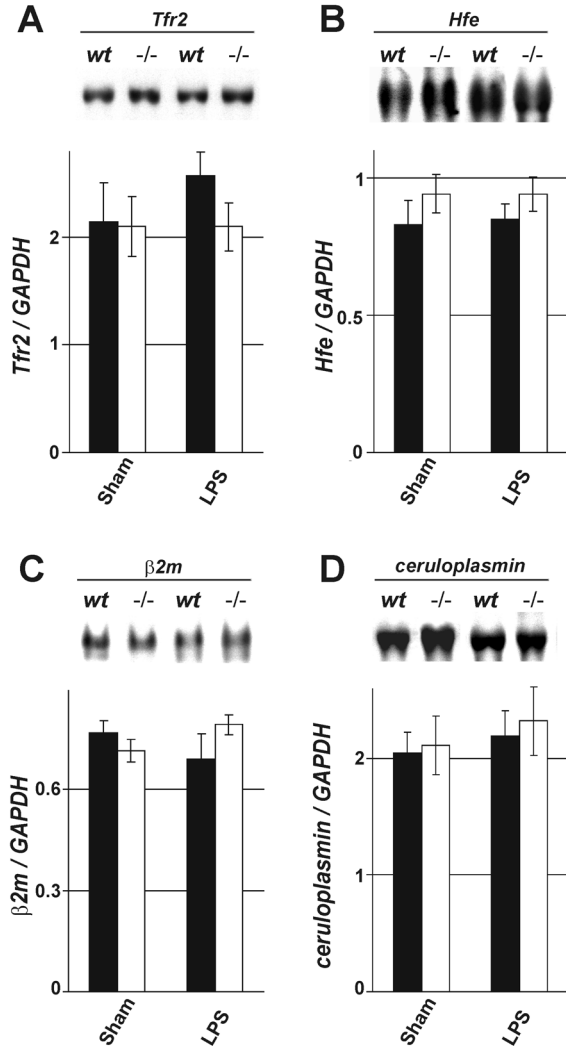


Supplemental Figure 1. Iron accumulation, but no indication of cardiomyopathy or diabetes in *Hjv* mutant mice.

(A-D) Histological detection of iron content on cryostat sections of heart (A, B) and pancreas (C, D) of 2.5 month old *wild-type* (A, C) and *Hjv*^{-/-} (B, D) mice. (E) Time course (from P12 to P300; indicating days after birth) of iron content (μmol/g dry weight) determined in *Hjv*^{-/-} mice (squares) compared to pooled *wild-type* and *Hjv*^{+/-} mice (triangles). Pancreas (green) and heart (blue) are depicted in the graph. At least 3 animals per time point and genotype were included in the analysis. Asterisks indicate significant changes ($P < 0.05$) in *Hjv*^{-/-} mice as compared to pooled *wild-type* and *Hjv*^{+/-} littermates. (F) Quantification of mRNA expression levels as assessed by Northern blot analysis was performed by normalization of each cardiomyopathy related gene to *GAPDH* expression probed sequentially on the same blots. Histograms depict *wild-type* mice in black (n=4), *Hjv* mutant mice in grey (n=4). Analyzed animals were 8-10 months old. (G) Comparison of body weight to heart weight ratio (x100). Histograms depict *wild-type* mice in black (n=4), *Hjv* mutant mice in grey (n=7). Analyzed animals were 8-10 months old. (H) Comparison of blood glucose (mg glucose/dl blood). Histograms depict *wild-type* mice in black (n=4), *Hjv* mutant mice in grey (n=5). Analyzed animals were 8-10 months old. Scale bar: (A-D)=70μm, (C, D)=45μm.



Supplemental Figure 2. LPS injection does not influence expression of *Tfr2*, *Hfe*, $\beta 2$ -microglobulin and *ceruloplasmin*.

(A-D) Northern blot analysis of *Tfr2*, *Hfe*, $\beta 2$ -microglobulin, *ceruloplasmin* and *GADPH* expression on total RNA isolated from liver of *wild-type* or *Hfe* mutant mice. 6 hours before isolation of RNA, mice were injected intraperitoneally with PBS (sham) or LPS. At least four animals per experimental condition were analyzed and one representative example is shown. Quantification of expression levels was performed by normalization of each sample to *GADPH* expression probed sequentially on the same blots. Histograms depict *wild-type* mice in black, *Hfe* mutant mice in white.