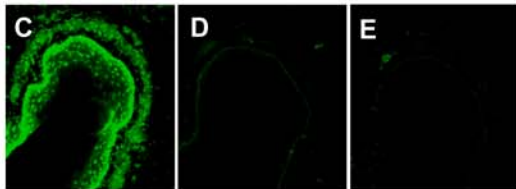
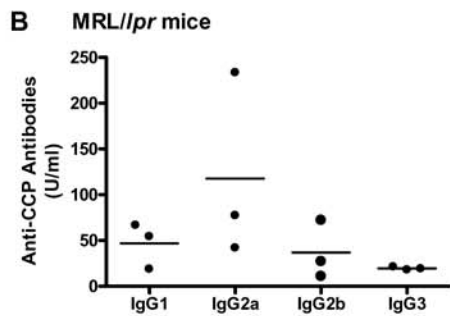
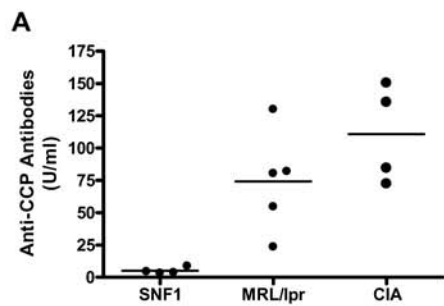
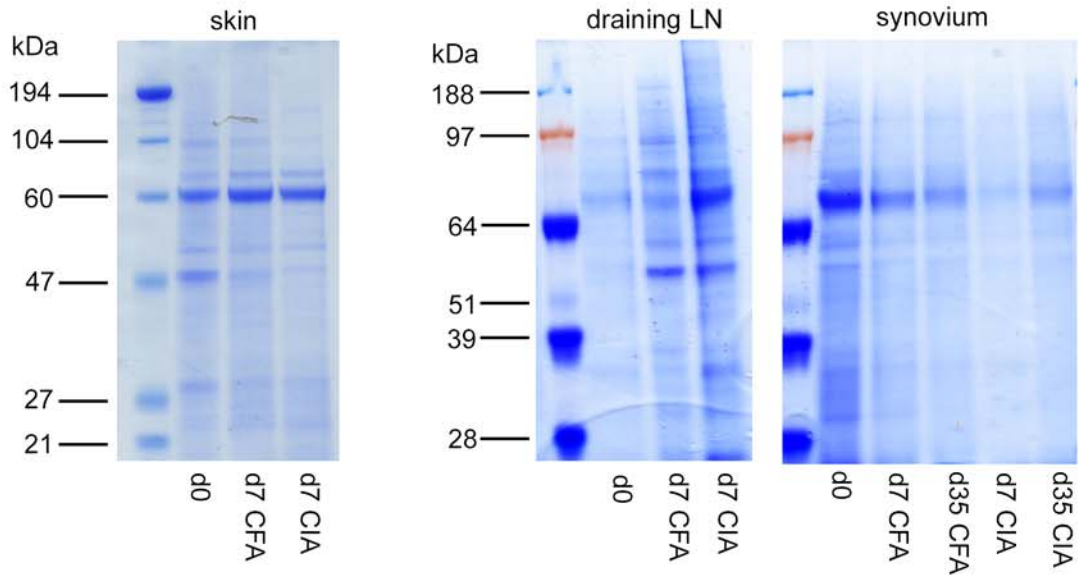


Supplementary Table 1. Selected synovial antigens and sequences included on the synovial antigen array.

Antigen	Sequence
keratin-cit protein	
keratin-native protein	
HCgp39 (76-91)	ERSLSLLNCEEIKSQF
cfc(Sigma)	HQ[Cycl]HQESTXGRSRGR[Cycl]GRSGS
hFibB406-425 cit	STYDXDNDGWLTSDPXKQCS
hFibB106-125 cit	CPTGCQLQEALLQQEXPIXN
hFibB436-455	RCHAANPNGRYYWGGQYTWD
hFibB406-425	STYDRDNDGWLTSDPRKQCS
hFibB106-125	CPTGCQLQEALLQQERPIRN
hFibA346-365 cit	NQNPGSPXPGSTGTWNPSS
hFibA526-545	SRGSEGGFFSPMLGEFVSETE
hFibA346-365	NQNPGSPRPGSTGTWNPSS
hFibA46-65	ACKDSDWPFCSEDEDWDWPFC
vim406-425 cit	GEESXISLPLPNFSSLNLXE
vim361-380 cit	TIGXLQDEIQNMKEEMAXHL
vim271-290 cit	DVXQQYESVAAKNLQEAEEW
vim196-215 cit	XEEAENTLQSFQDVNTLQS
vim136-155 cit	EQLKGQGKSXLGDLYEEEMX
vim1-20 cit	MSTXSVSSSSYXXMFGGPGT
vim406-425	GEESRISLPLPNFSSLNLRE

vim361-380	TIGRLQDEIQNMKEEMARHL
vim271-290	DVRQQYESVAAKNLQEAEW
vim211-230	DNASLARLDLERKVESLQEE
vim196-215	REEAENTLQSFRQDVNTLQS
vim136-155	EQLKGQGKSRLGDLYEEEMR
vim46-65	PSTSRSLYASSPGGVYATRS
vim1-20	MSTRSVSSSSYRRMFGGPGT
H2B/r 31-51	AAHRKESYSIYVYKVLKQVH
ApoE 277-296 cit	AXLKSWFEPLVEDMQXQWAG
Clusterin 416-435 cit	EQFNWVSXLANTQGEDQYY
COMP468-487 cit	CDDDDDNDGVPDSXDNCXLV
Clusterin 416-435	EQFNWVSRLANTQGEDQYY
Fibromodulin 320-339	LQGNRINEFSISSFCTVVDV
COMP468-487	CDDDDDNDGVPDSRDNCRLV
BiP2004 protein	
vim191-200 cit	DIMXLXEKLQEEMLQXEEAE
cf48-65	TIHAHPGSRRGGRHGYHH





Supplementary Figure 1. Specific antibody reactivity to citrullinated proteins is restricted to CIA. (A) Sera from 4 month-old SNF1 (n = 4) and MRL/*lpr* (n=5) mouse models of lupus and from mice on day 35 after induction of CIA (n = 4) were tested for anti-CCP antibodies by ELISA. (B) Isotypes of the anti-CCP reactivity in MRL/*lpr* mice (n = 3) were tested by ELISA. Titers from individual mice are represented by circles and the average for the group expressed as a bar. (C-E) Sera from MRL/*lpr* mice was diluted in (C) PBS, (D) LRP, or (E) LXP and applied to sections of rat esophagus. Serum antibody binding was detected with FITC conjugated goat anti-mouse IgG. Sections are shown at 100X.

Supplementary Figure 2. Protein isolated from the skin, inguinal LN, and synovium of unimmunized mice, mice immunized with CFA, or mice with CIA at different timepoints. Protein was quantitated as described in Methods and 20 μ g was loaded onto 10% Bis-Tris gels. Gels were stained with coomassie blue and are shown.