

Fig. 1B

IP: FLAG, IB: Myc-HDAC11



Input Gravin- α FLAG and Input Myc-HDAC11

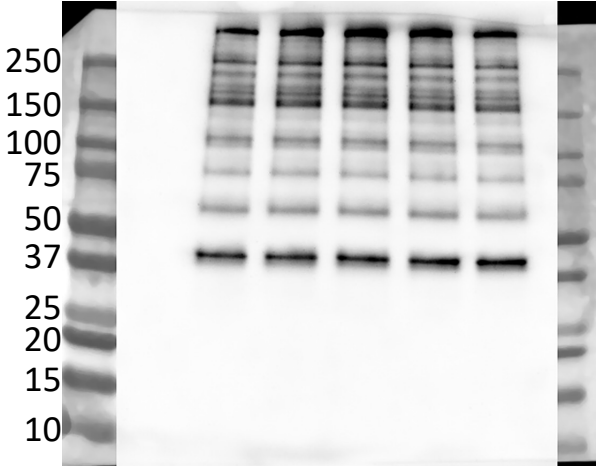
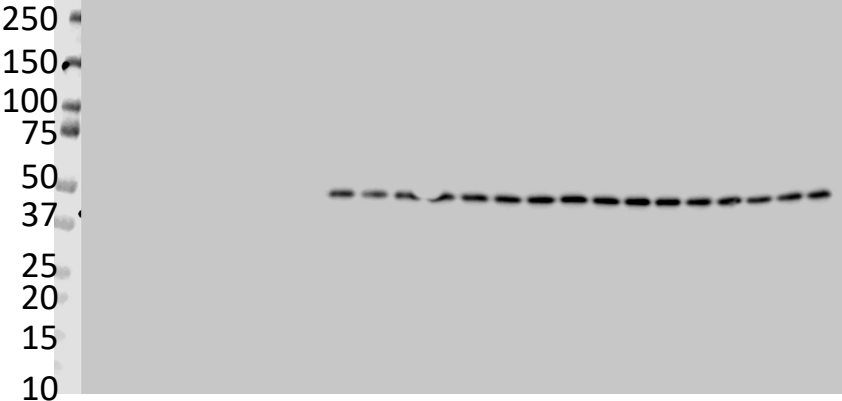


Fig. 1E

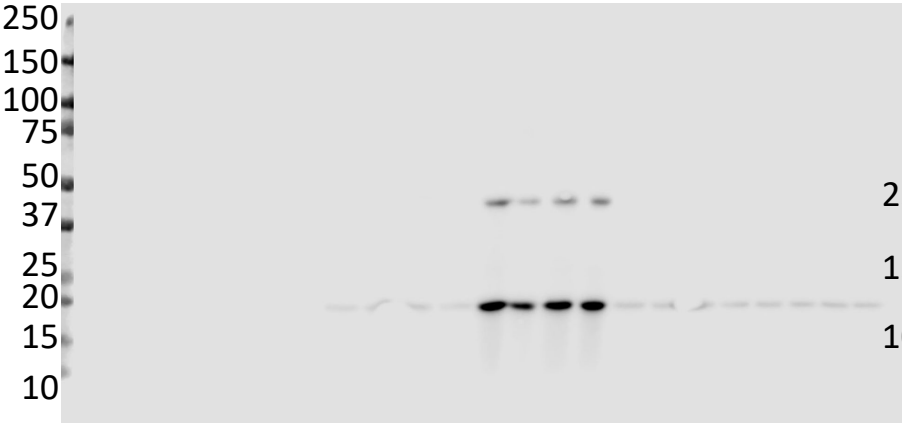
IP: FLAG, IB: β 3-AR



IP: FLAG, IB: Flot-2



IP: FLAG, IB: Cav-1



Input FLAG-Gravin

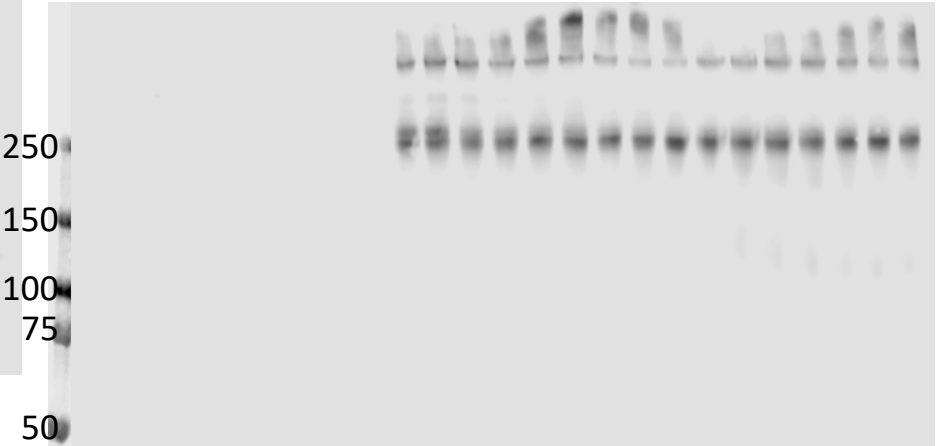
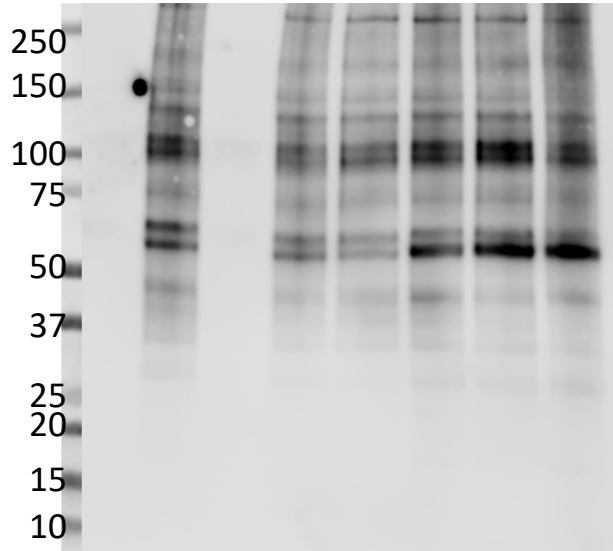
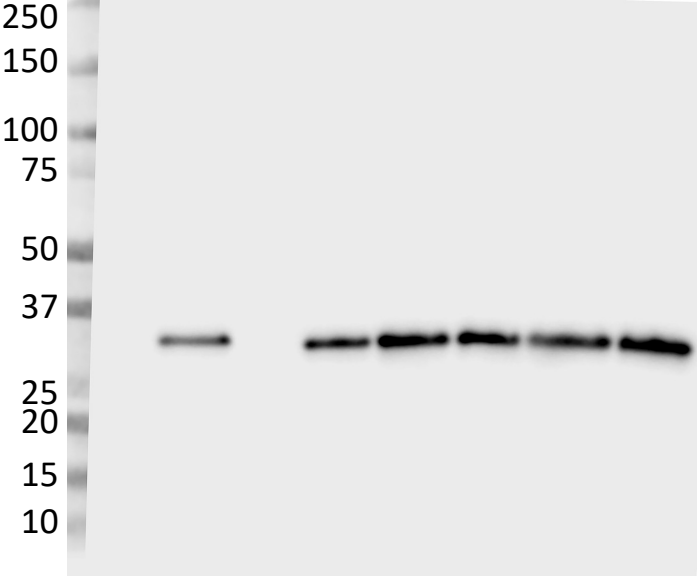


Fig. 1F

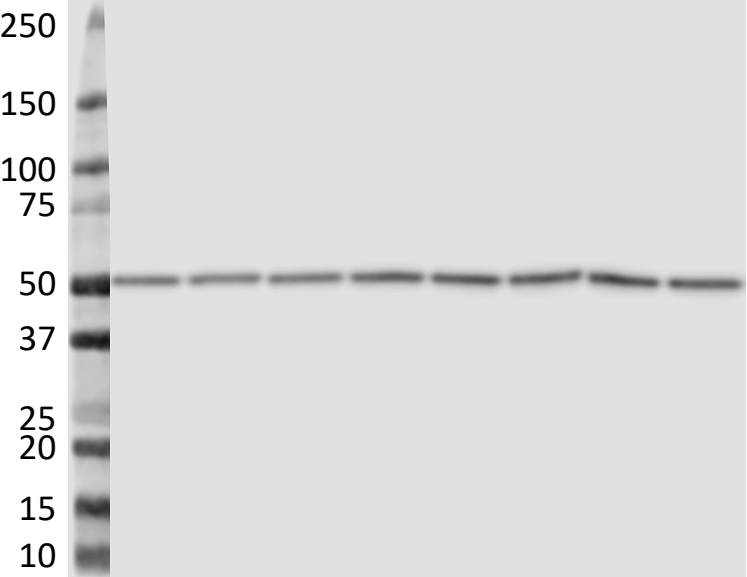
Phospho-PKA Substrates



UCP1

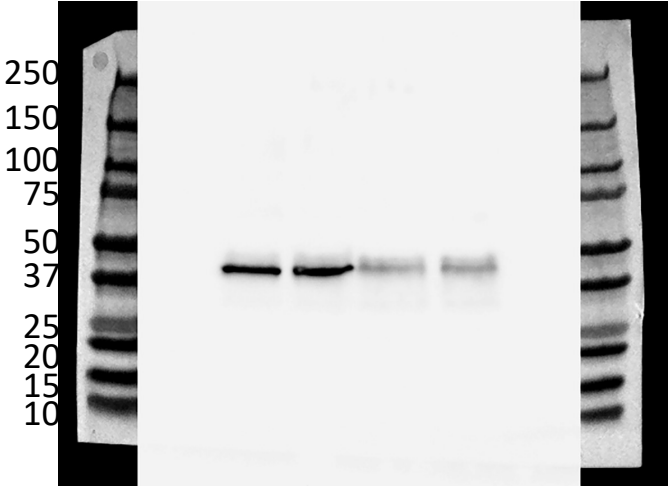


α -Tub

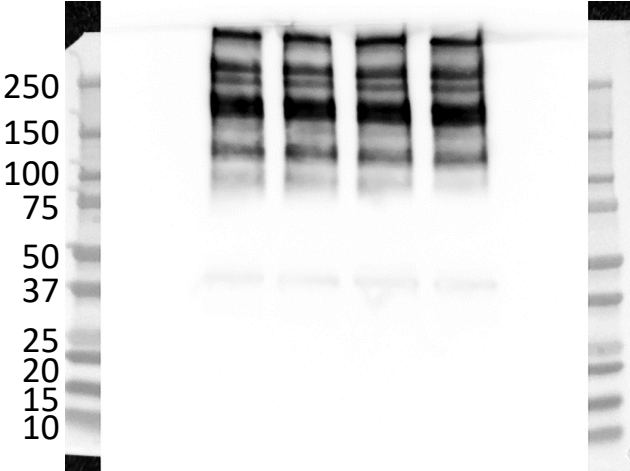


Supplemental Figure 1A

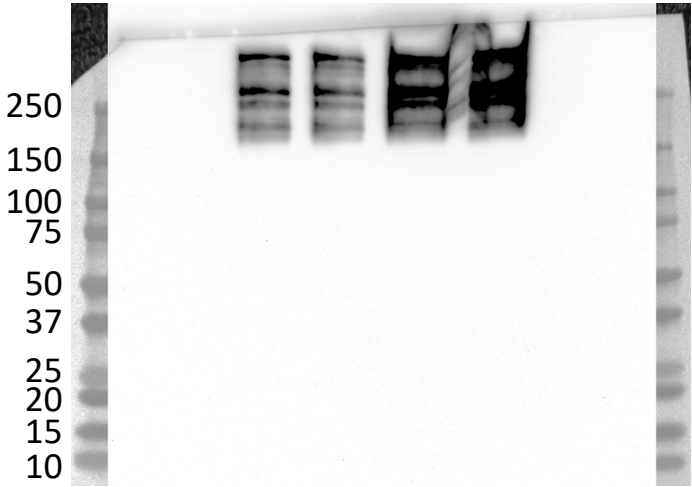
IP: FLAG, IB: Myc-HDAC11



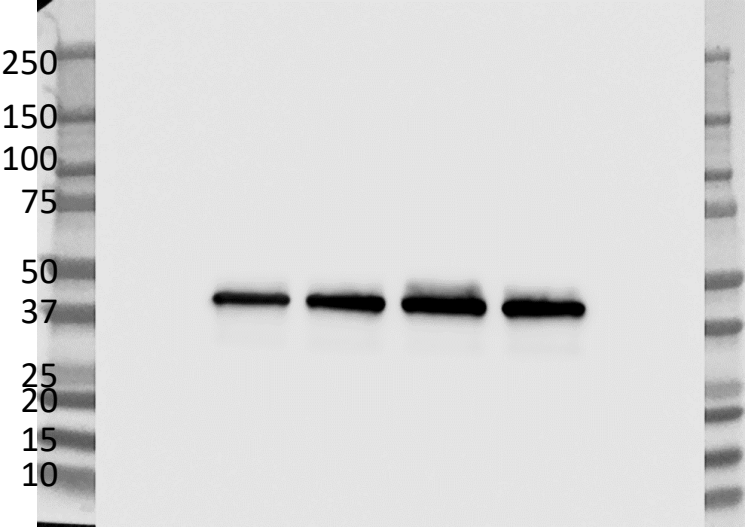
Input Gravin-FLAG



IP: FLAG, IB: Myrist-Gravin

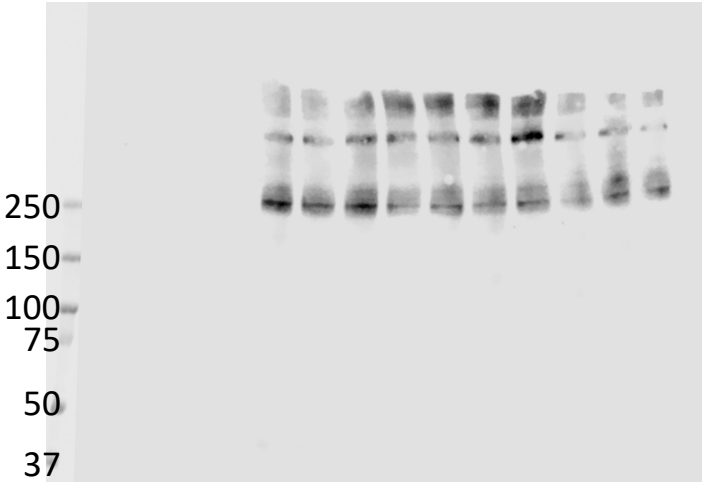


Input Myc-HDAC11



Supplemental Figure 1C

IP: FLAG, IB: Gravin-FLAG



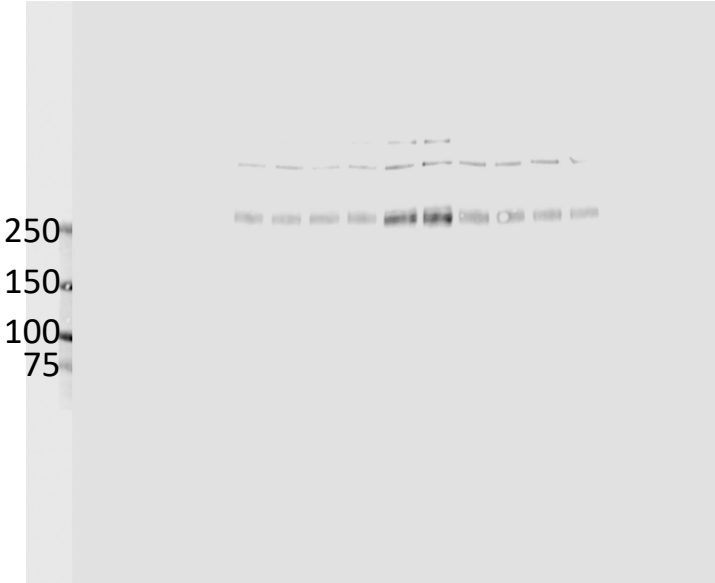
Membrane cut after Gravin-FLAG blot and reprobed for Myc

IP: FLAG, IB: Myc-HDAC11



Lower half of membrane cut to avoid IgG signal

IP: FLAG, IB: Myrist-Gravin



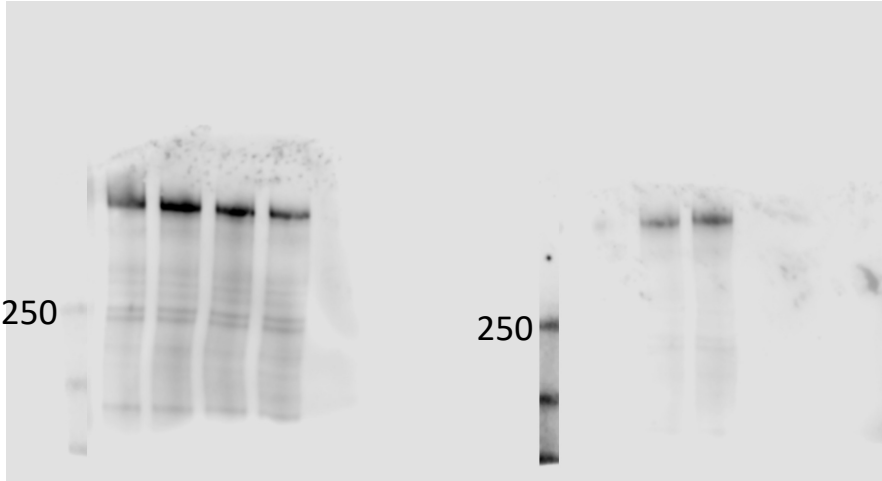
Input Myc-HDAC11



Supplemental Figure 2B and 2C

Total Gravin

Myrist-Gravin

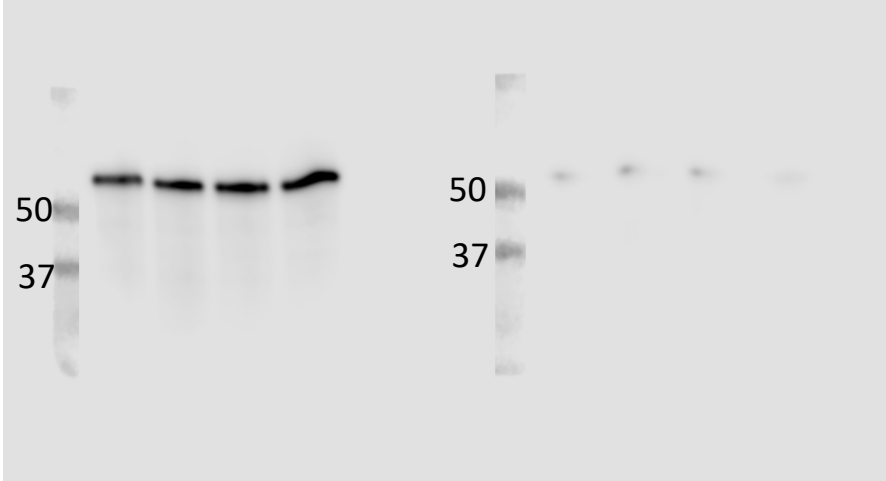


← Membrane cut in half prior to probing for gravin or SHMT2

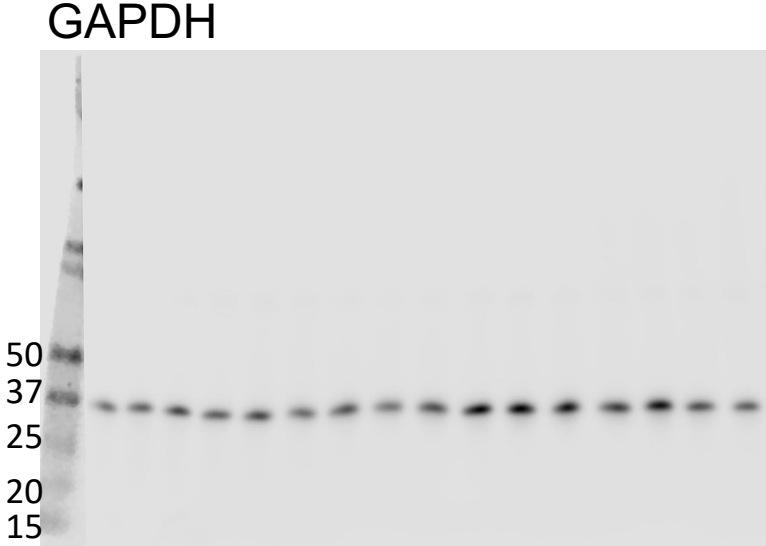
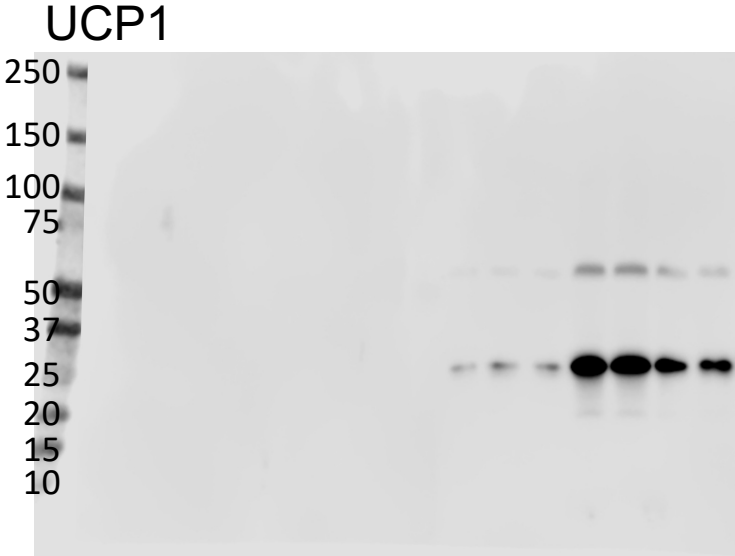


Total SHMT2

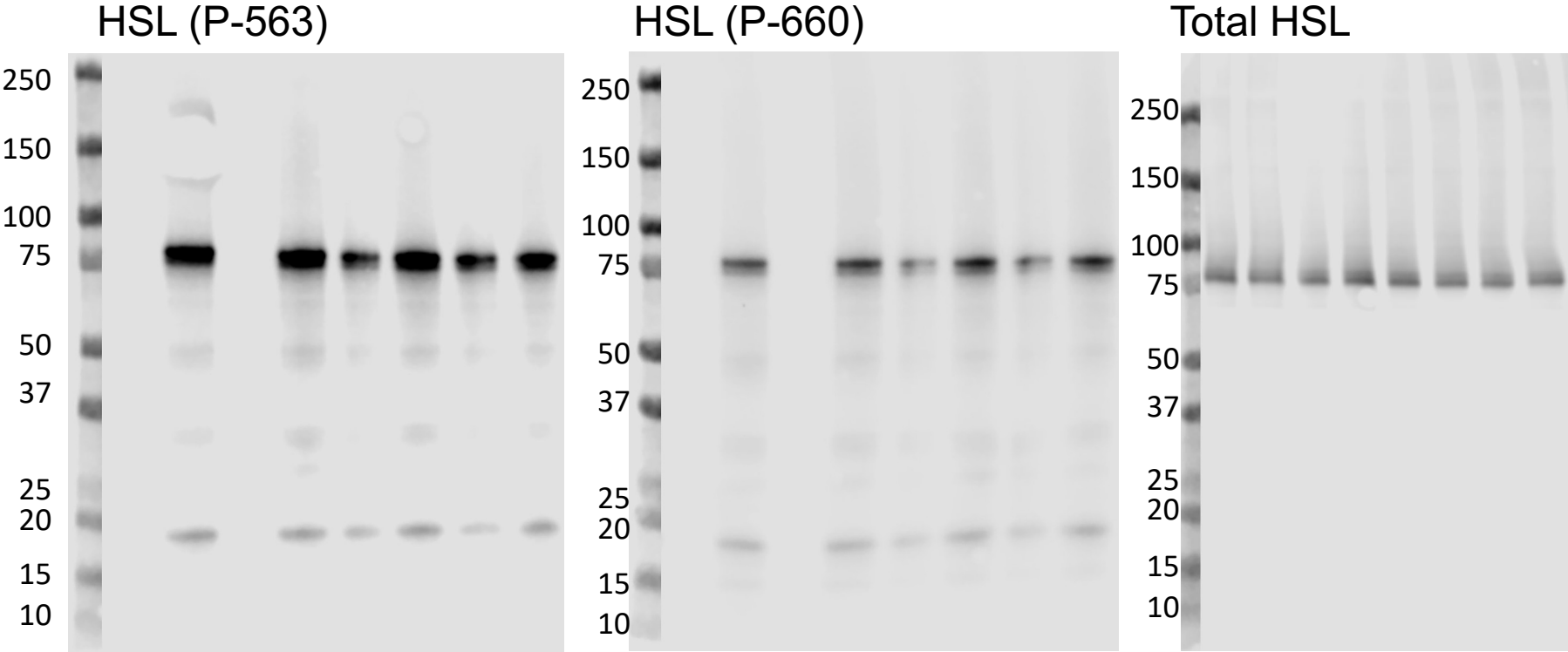
Myrist-SHMT2



Supplemental Figure 3A



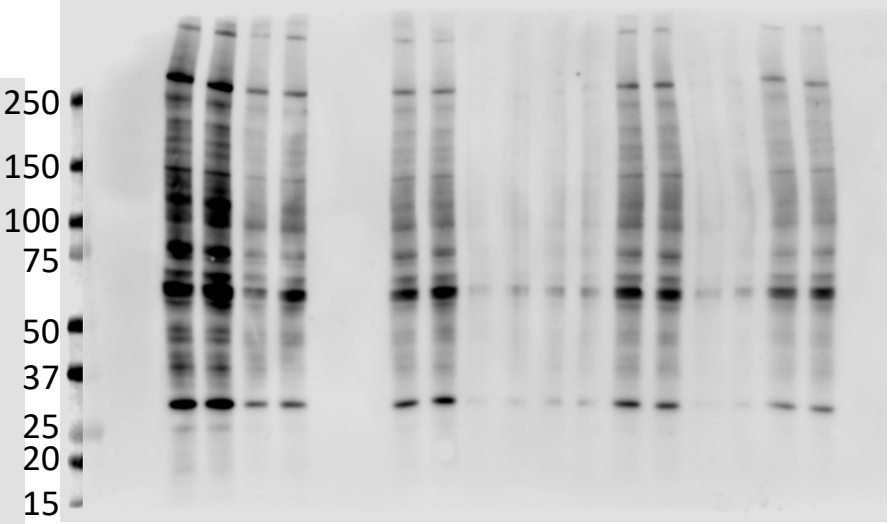
Supplemental Figure 4A



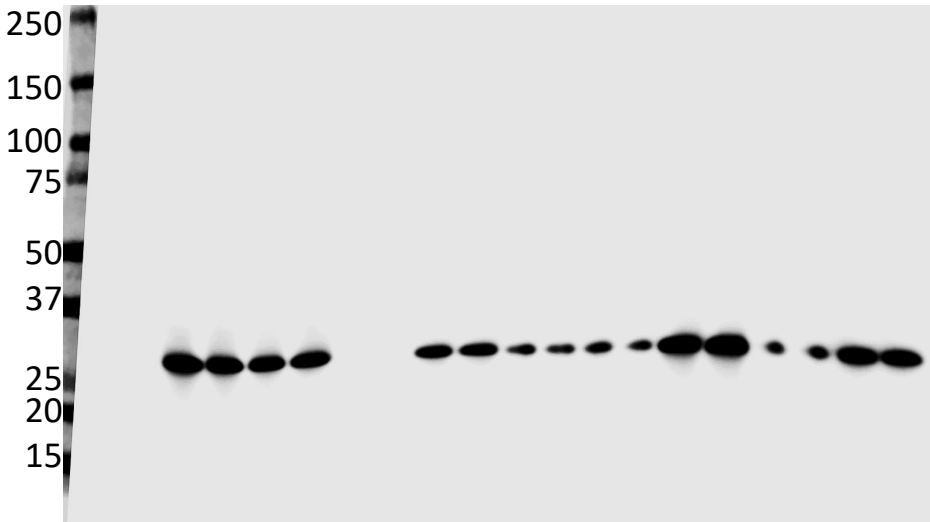
Supplemental Figure 5B

Phospho-PKA Substrates

β 3-AR



UCP1



GAPDH

