

**Full unedited gel for Figures in**

**METTL14-mediated m6A epitranscriptomic modification contributes to chemotherapy-induced neuropathic pain by stabilizing GluN2A expression via IGF2BP2**

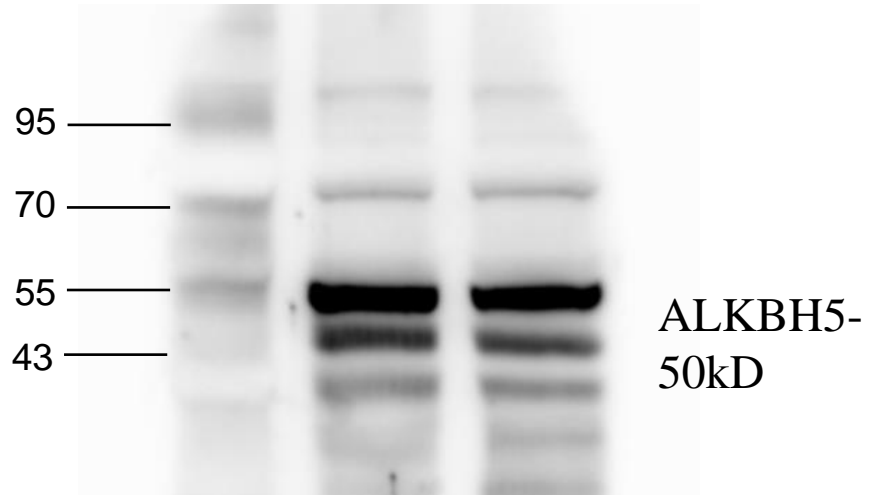
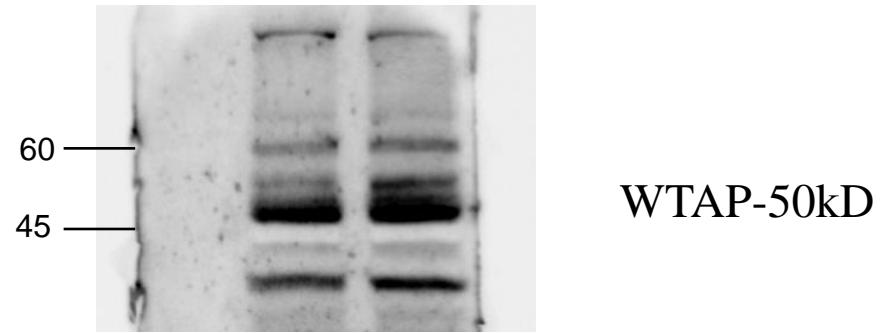
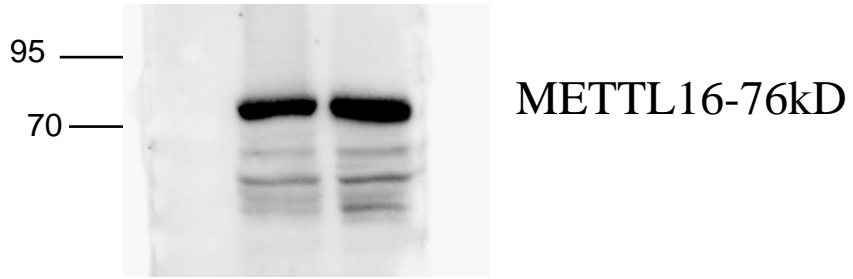
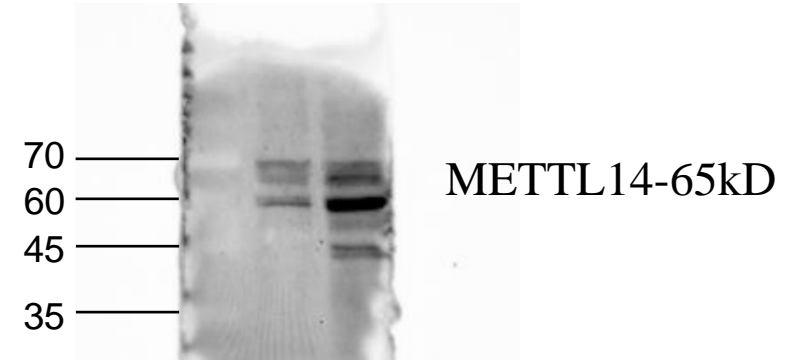
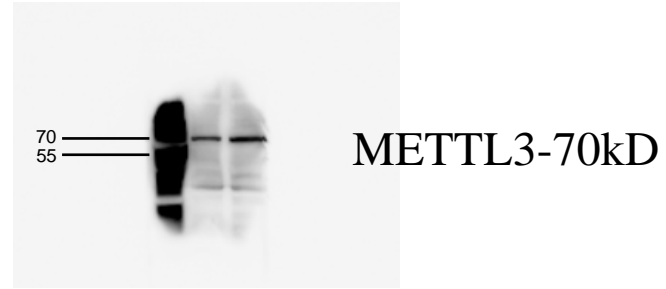
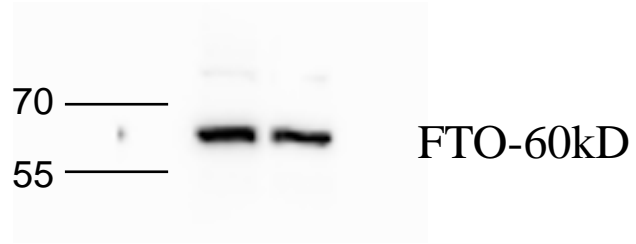
Weicheng Lu<sup>1,†</sup>, Xiaohua Yang<sup>1,†</sup>, Weiqiang Zhong<sup>1,†</sup>, Guojun Chen<sup>1,†</sup>, Xinqi Guo<sup>2</sup>, Qingqing Ye<sup>1</sup>, Yixin Xu<sup>1</sup>, Zhenhua Qi<sup>1</sup>, Yaqi Ye<sup>1</sup>, Jingyun Zhang<sup>3</sup>, Yuge Wang<sup>3</sup>, Xintong Wang<sup>1</sup>, Shu Wang<sup>1</sup>, Qiyue Zhao<sup>2</sup>, Weian Zeng<sup>1</sup>, Junting Huang<sup>3\*</sup>, Huijie Ma<sup>2\*</sup>, Jingdun Xie<sup>1\*</sup>

<sup>1</sup> Department of Anesthesiology, State Key Laboratory of Oncology in South China, Sun Yat-sen University Cancer Center, Guangzhou, Guangdong 510060, China.

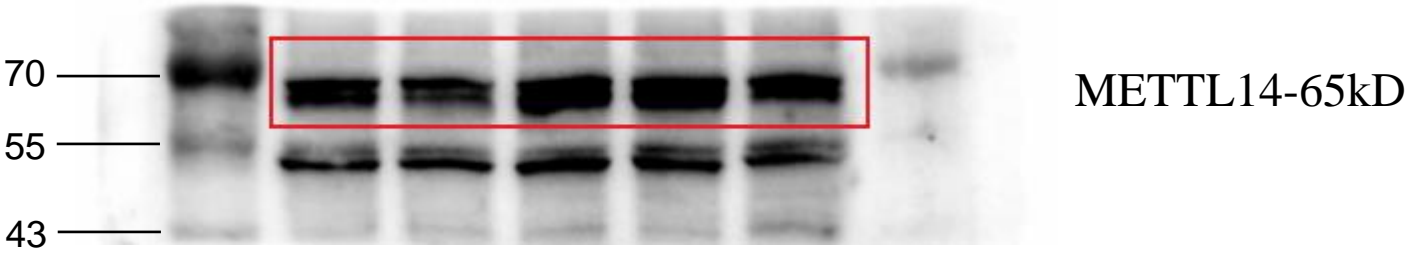
<sup>2</sup> Department of Physiology, Hebei Medical University, Shijiazhuang, Hebei, 050017, China.

<sup>3</sup> Department of Anatomy and Neurobiology, Zhongshan School of Medicine, Sun Yat-sen University, Guangzhou, Guangdong 510080, China

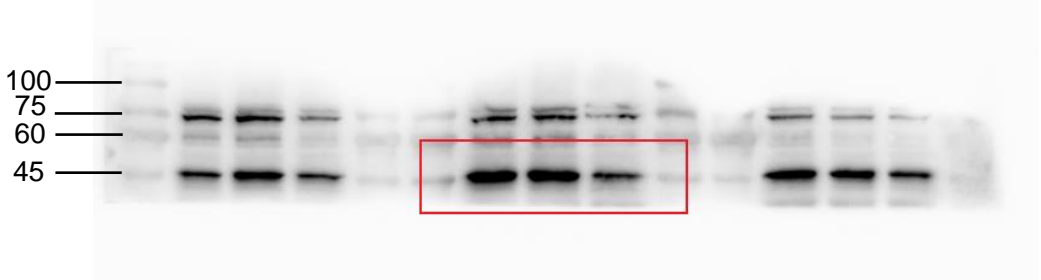
Full unedited gel for Figure 1F



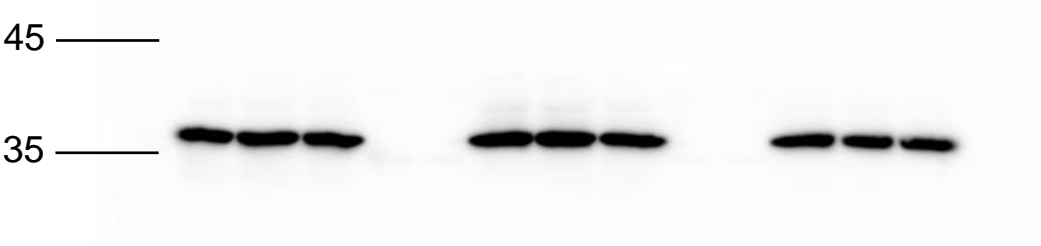
Full unedited gel for Figure 1H



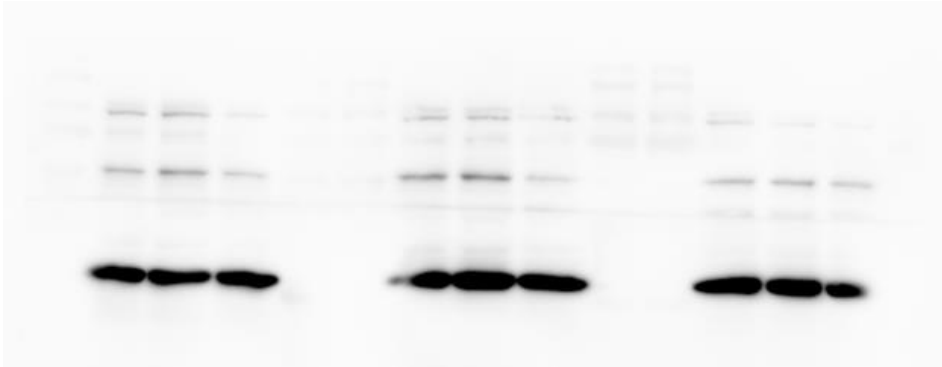
Full unedited gel for Figure 3B



METTL14-65kD

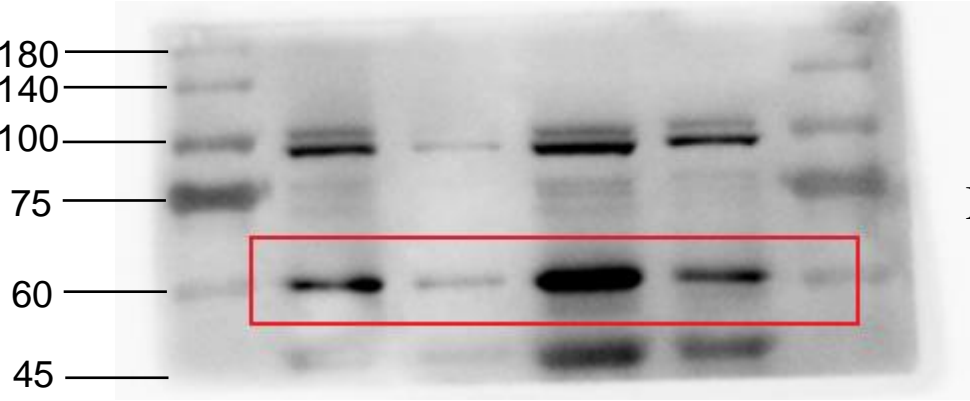


GAPDH-36kD

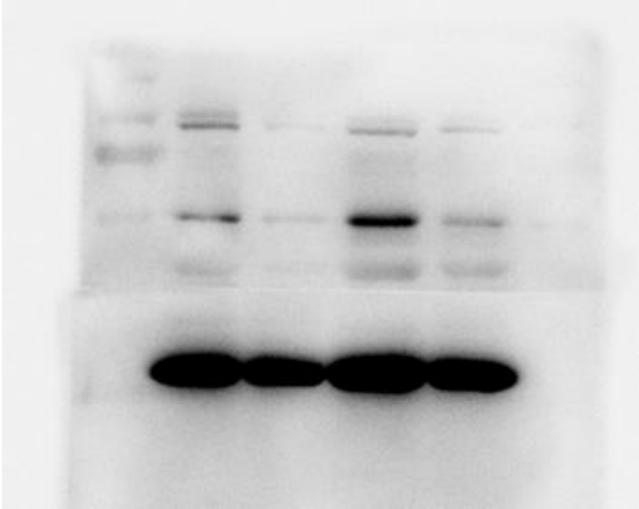


Merged

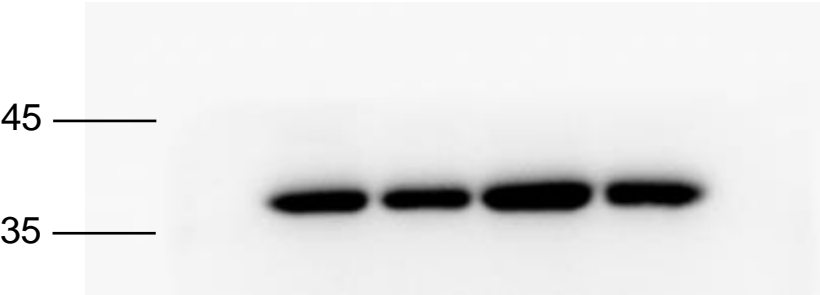
Full unedited gel for Figure 3E



METTL14-65kD

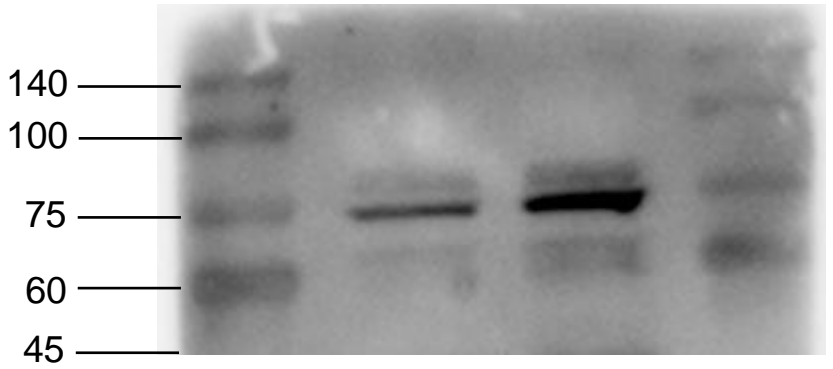


Merged

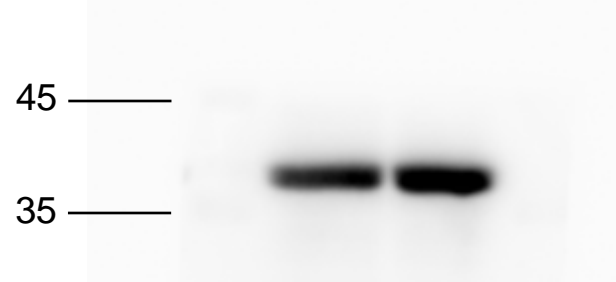


GAPDH-36kD

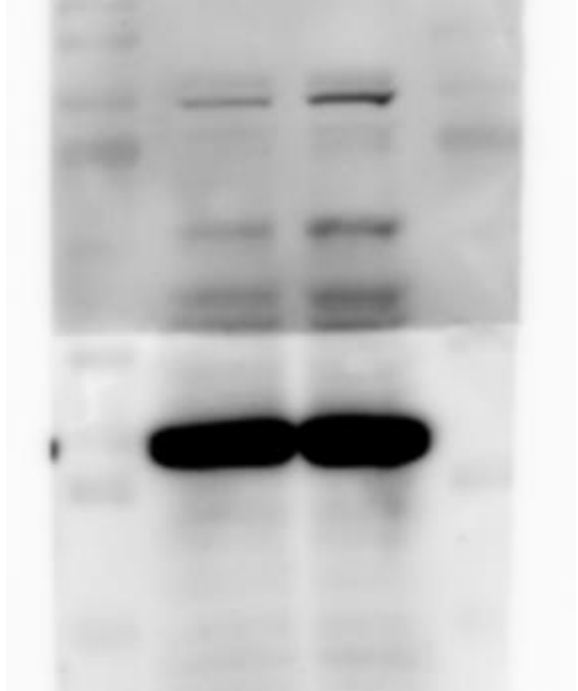
Full unedited gel for Figure 3H



METTL14-65kD

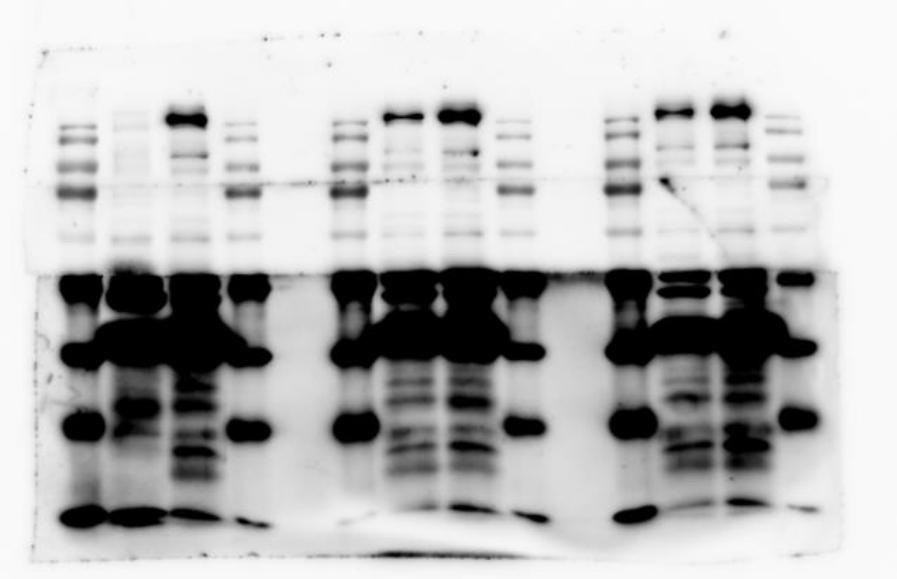
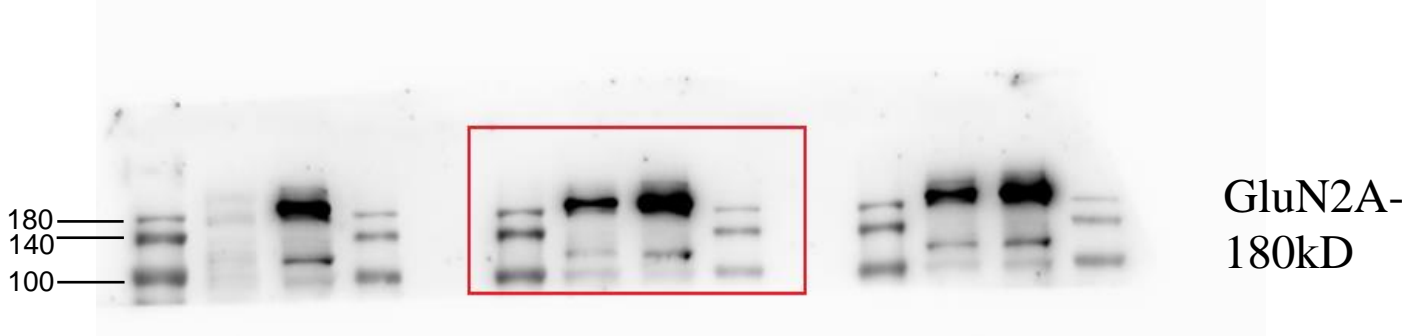
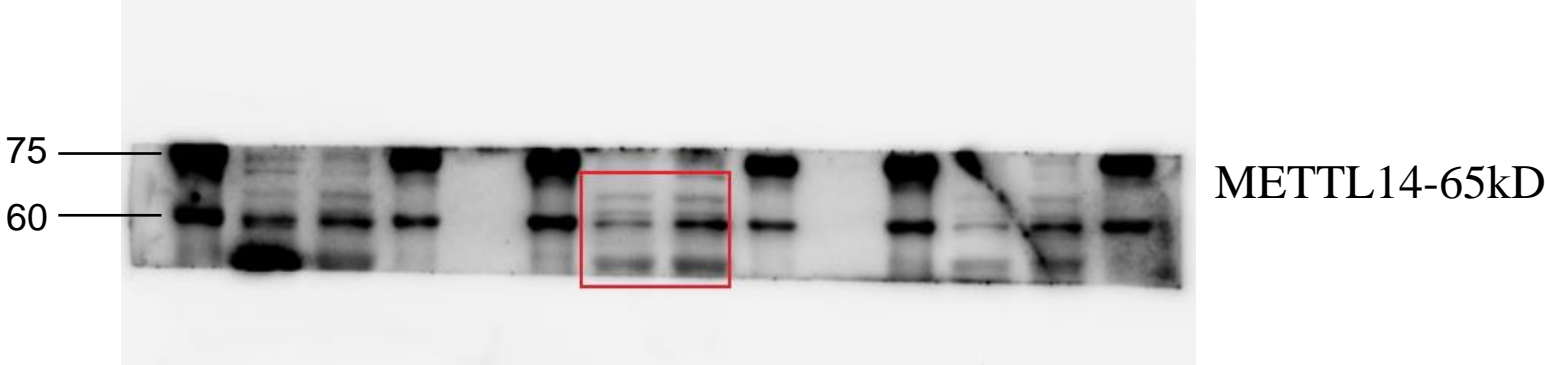


GAPDH-36kD



Merged

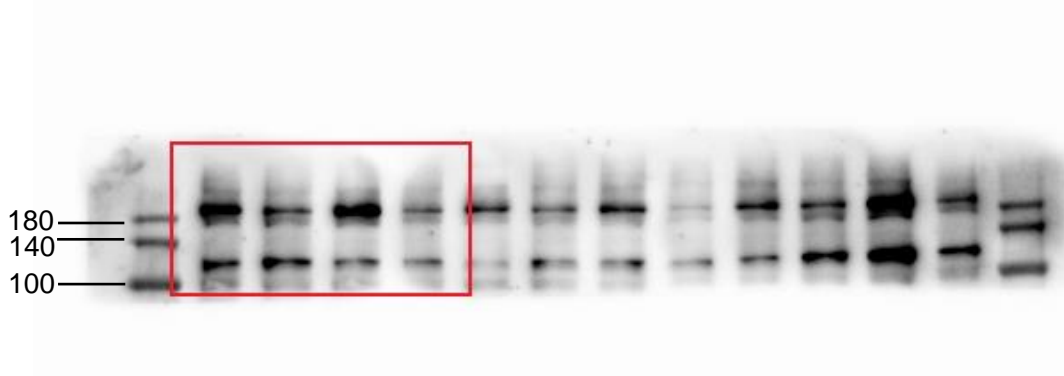
Full unedited gel for Figure 6B



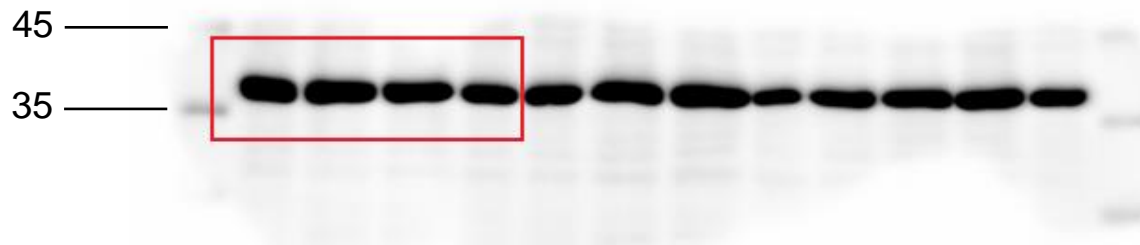
Full unedited gel for Figure 6D



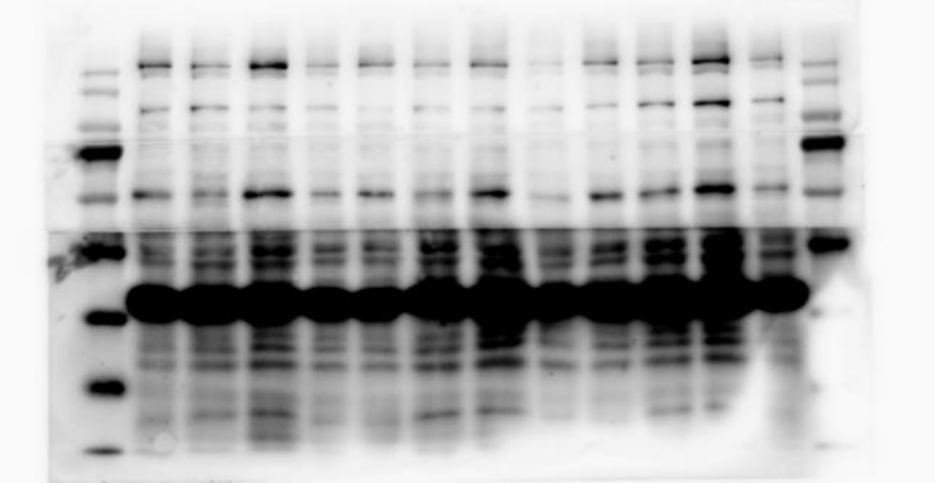
METTL14-65kD



GluN2A-180kD



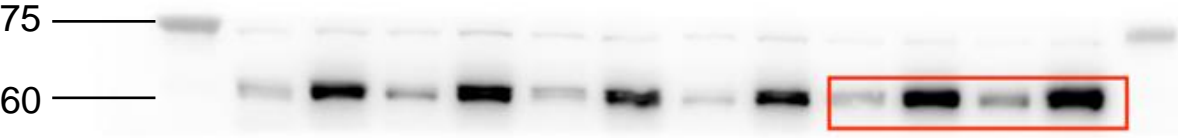
GAPDH-36kD



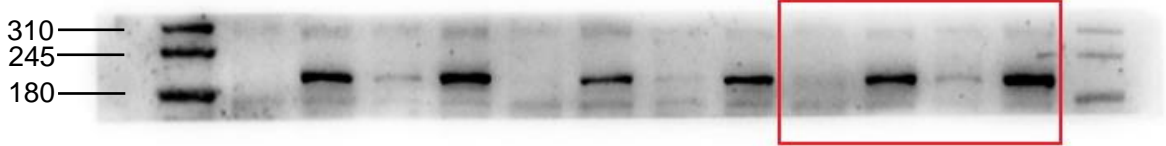
Merged



Full unedited gel for Figure 6F



METTL14-65kD



GluN2A-  
180kD

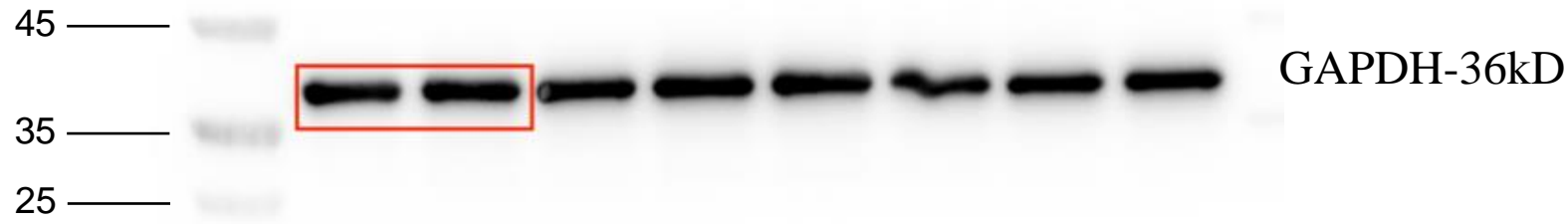
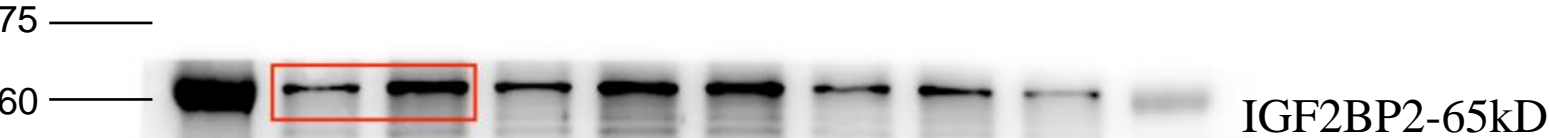


GAPDH-36kD

Full unedited gel for Figure 8F



Full unedited gel for Figure 9F



Full unedited gel for Figure 9G



IGF2BP1-71kD



IGF2BP2-65kD

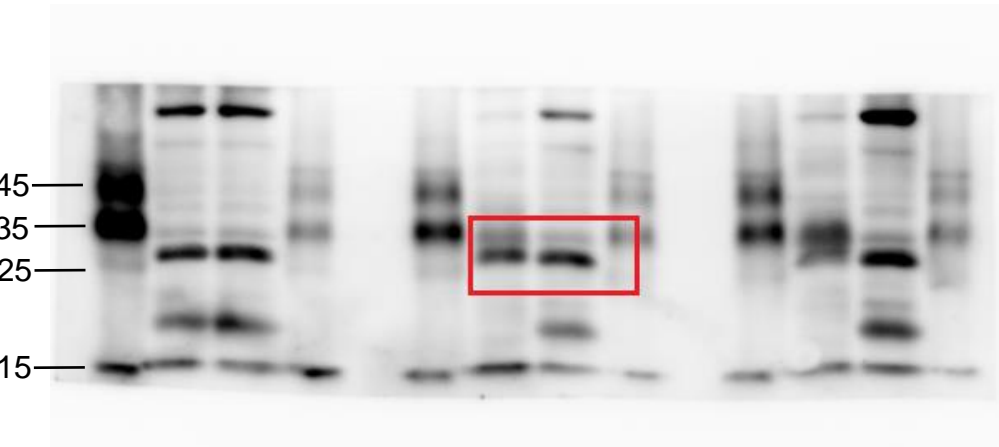


IGF2BP3-70kD

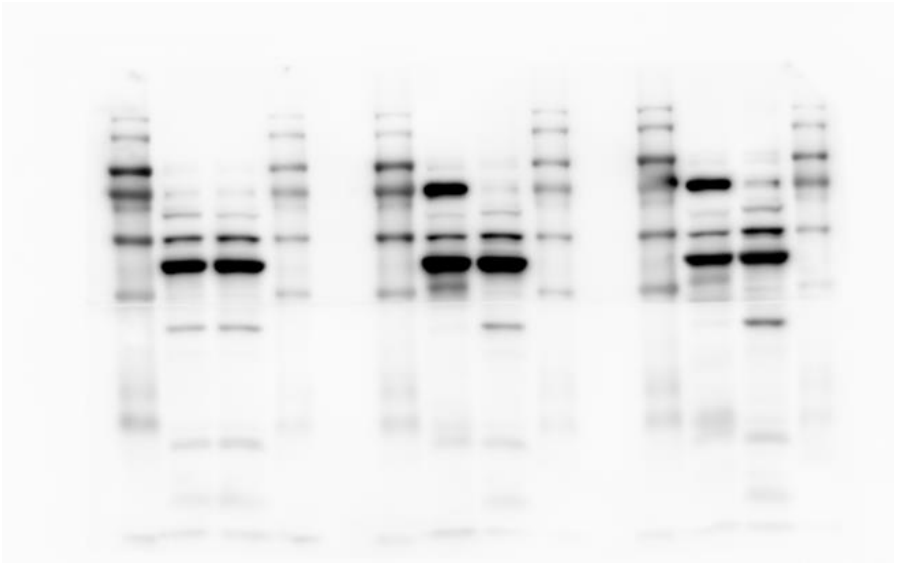


GAPDH-36kD

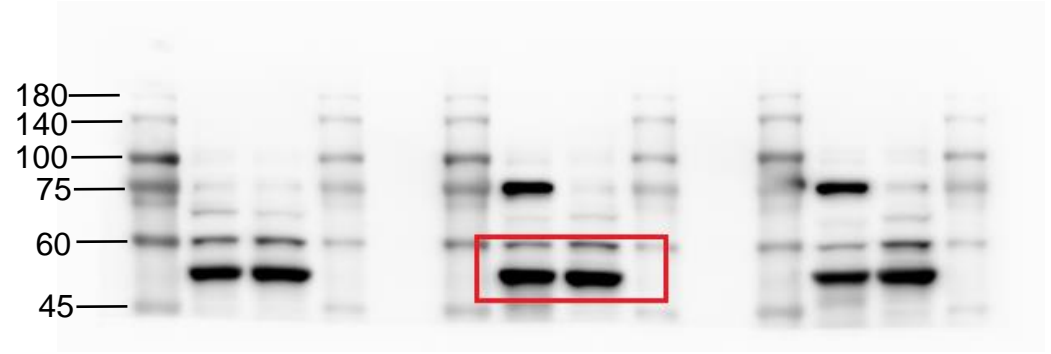
Full unedited gel for Figure 10C



DBP-34kD

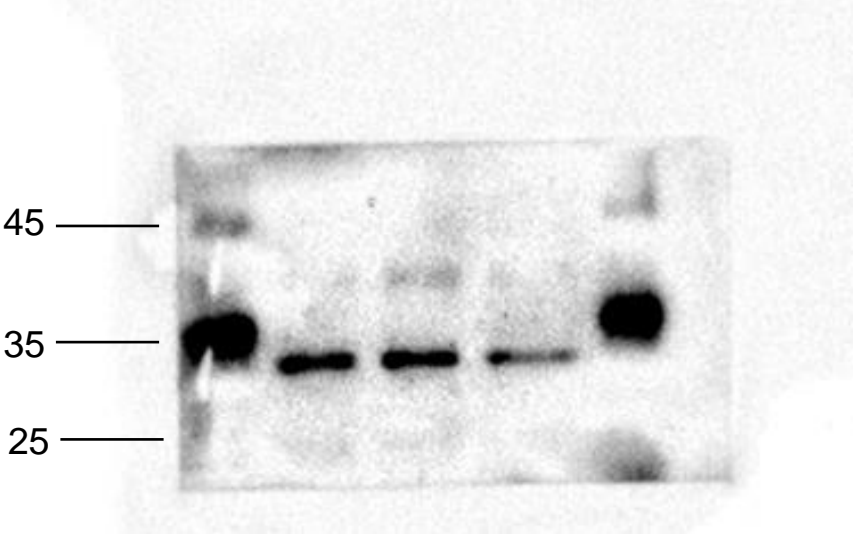


Merged

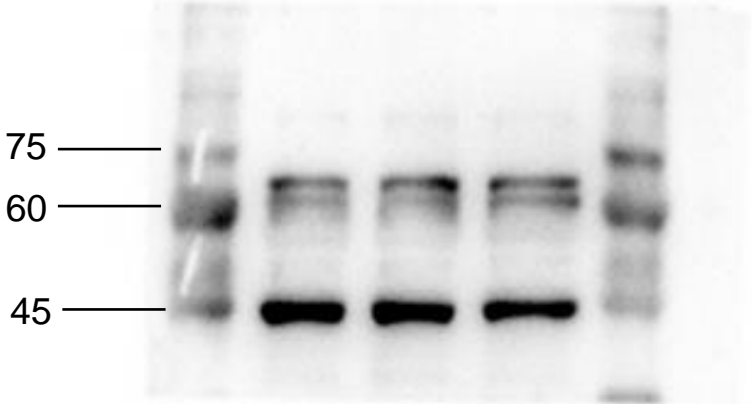


$\beta$ -tubulin-50kD

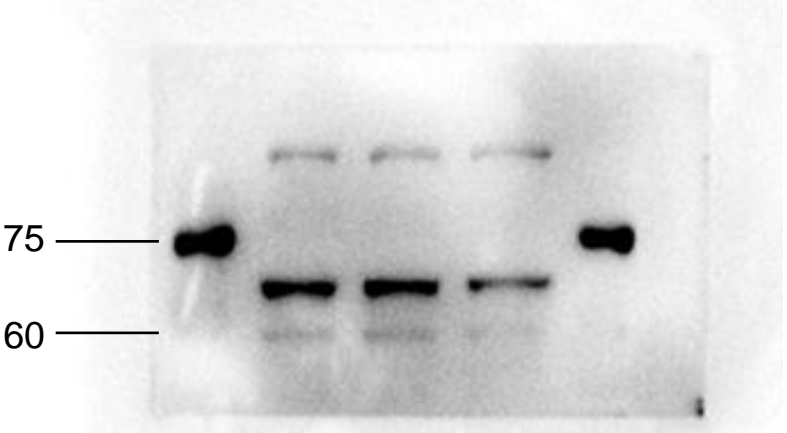
Full unedited gel for Figure 10E



DBP-34kD



$\beta$ -tubulin-50kD



METTL14-65kD

Full unedited gel for Figure S5C

