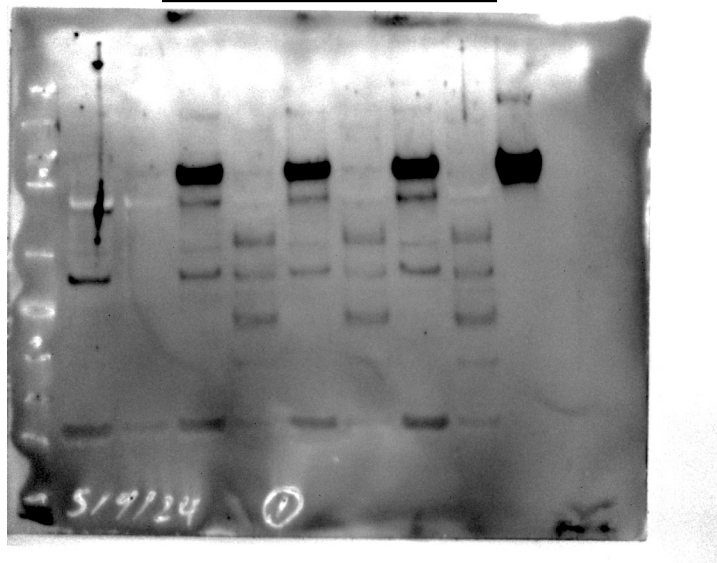


Full unedited membrane for Figure 1E

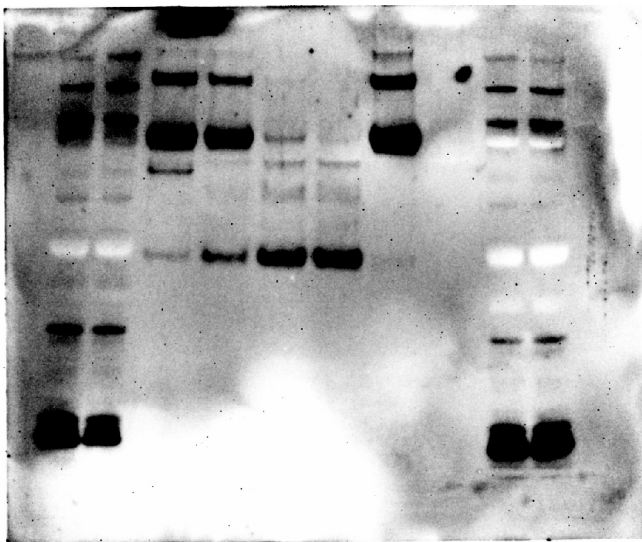
lanes used for the figure

---

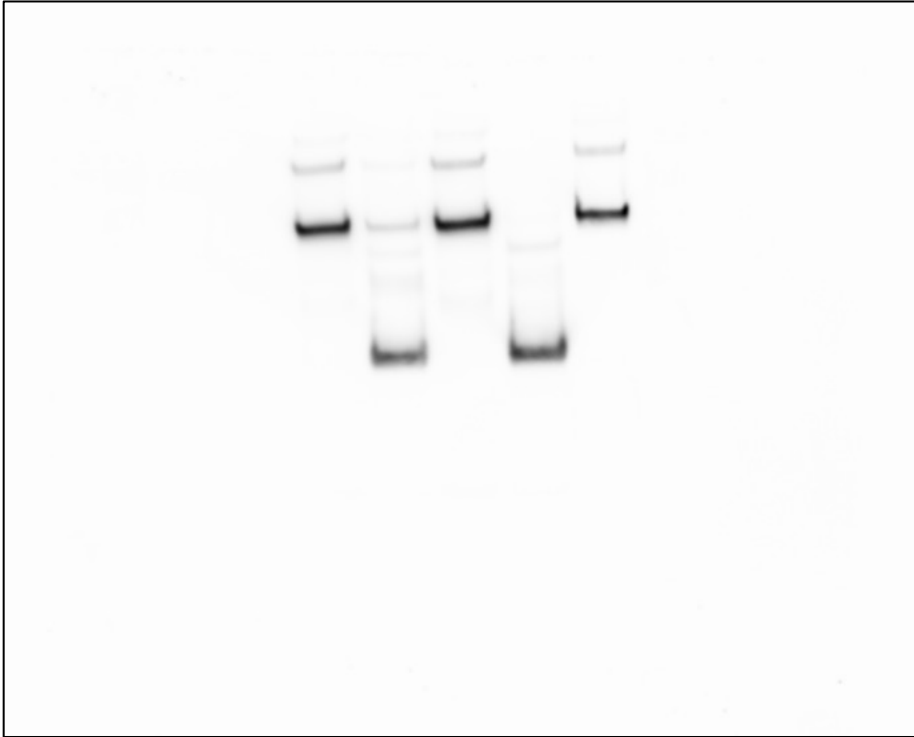


lanes used for the figure

---



lanes used for the figure

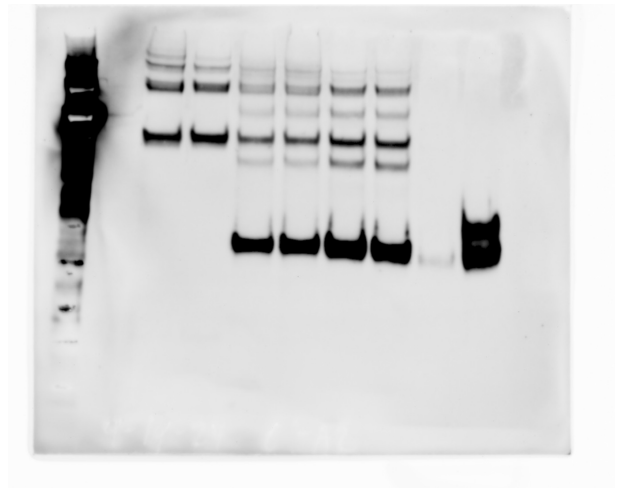


Full unedited membrane for Figure 2A

lane used for the figure

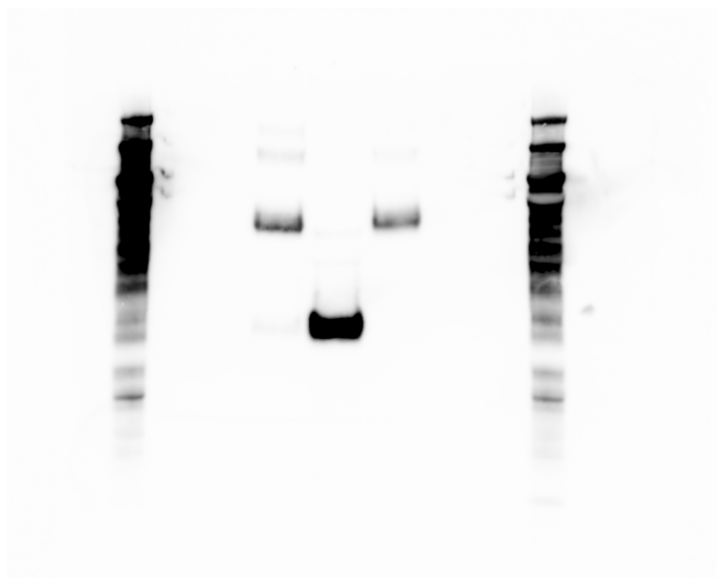


lane used for the figure



Full unedited membrane for Figure 2B

lanes used for the figure



# Full unedited film for Figure 2D

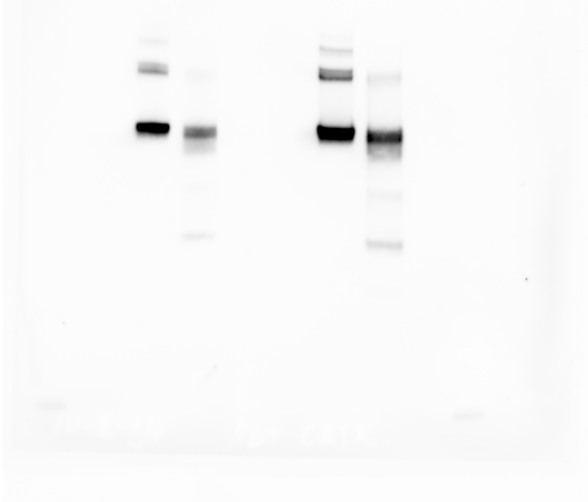
lanes used for the figure



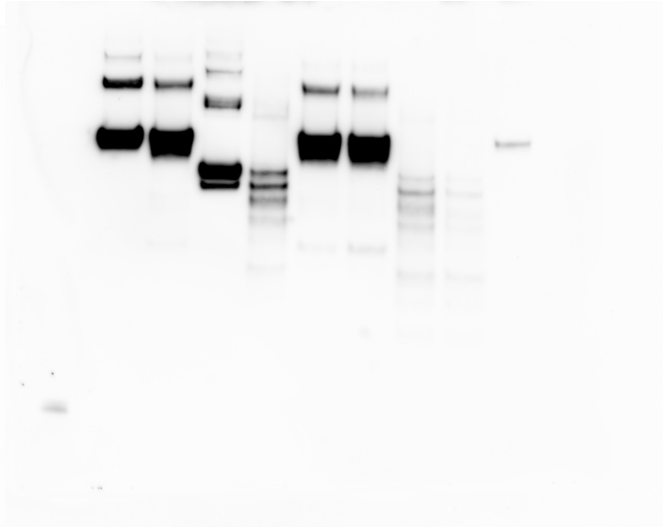
This Figure is used in Supplemental  
Figure 6J, C'-ANGPT2 lanes, too

Full unedited film for Figure 2G

lanes used for the figure,  
ANGPT2 left two lanes

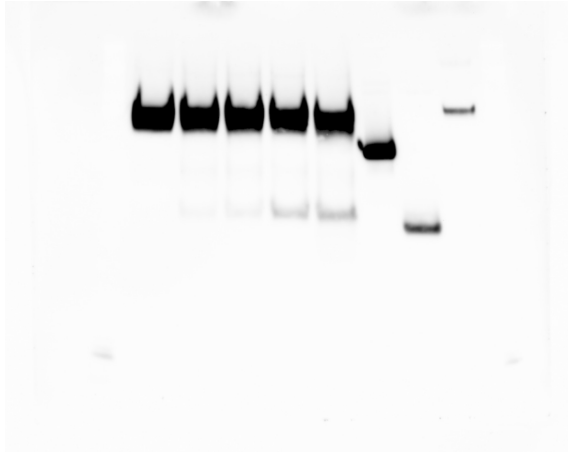


lanes used for the figure,  
ANGPT2 right two lanes

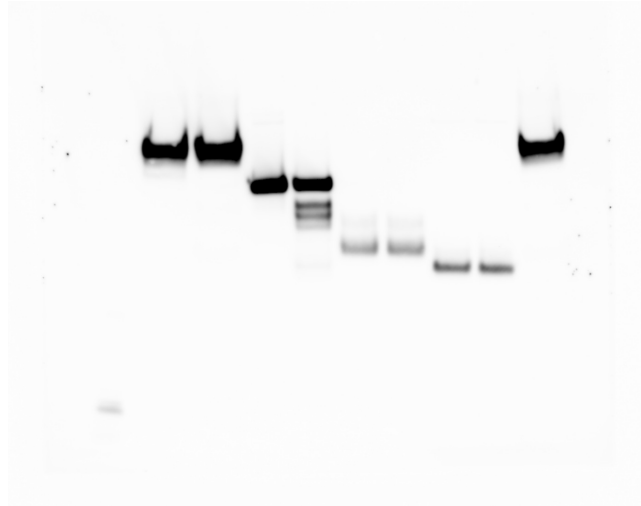


Full unedited film for Figure 2G

lanes used for the figure, ANGPT2  
(55S-496F) left two lanes



lanes used for the figure, ANGPT2  
(55S-496F) right two lanes

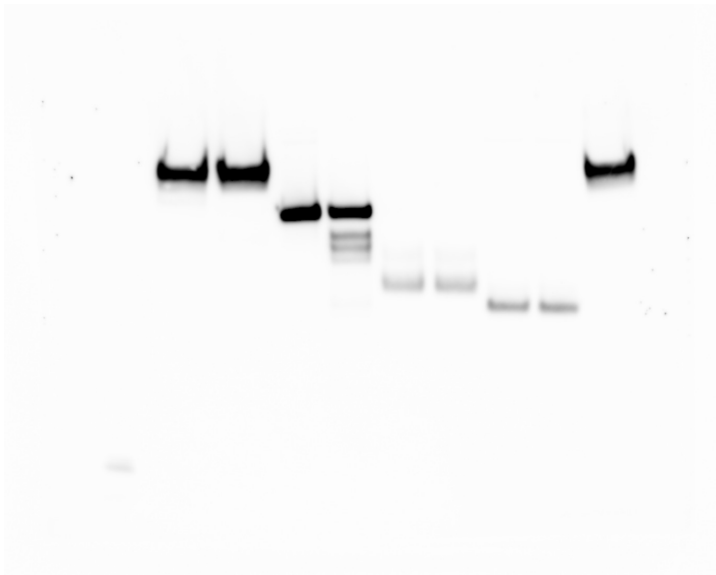




Full unedited film for Figure 2G

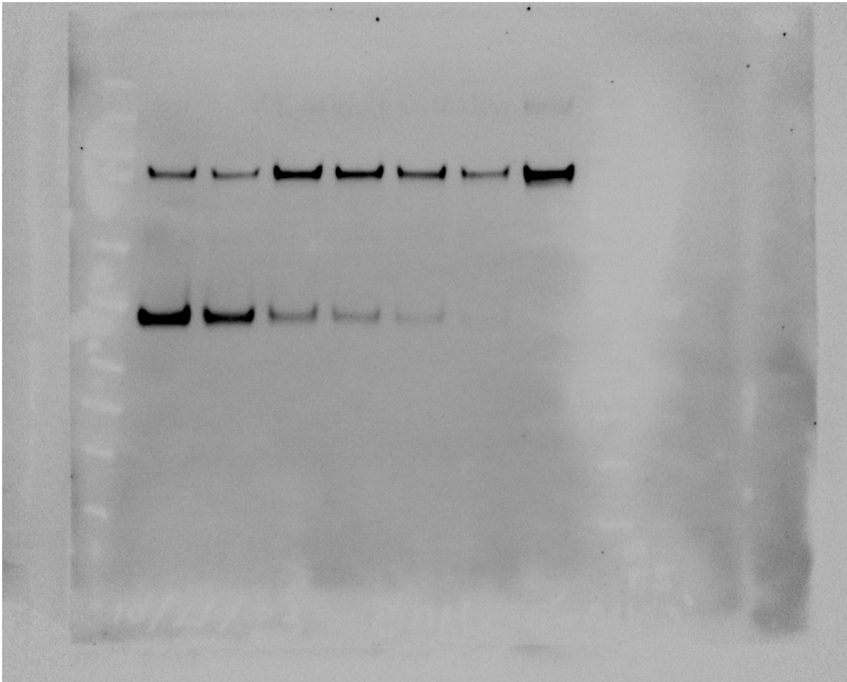
lanes used for the figure, ANGPT2  
(253E-496F)

---



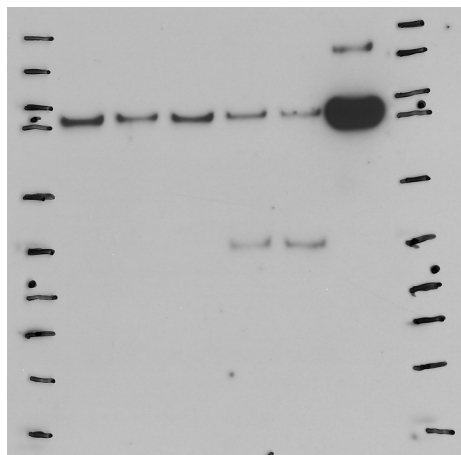
Full unedited membrane for Figure 3A

lanes used for the figure



Full unedited film for Figure 3B

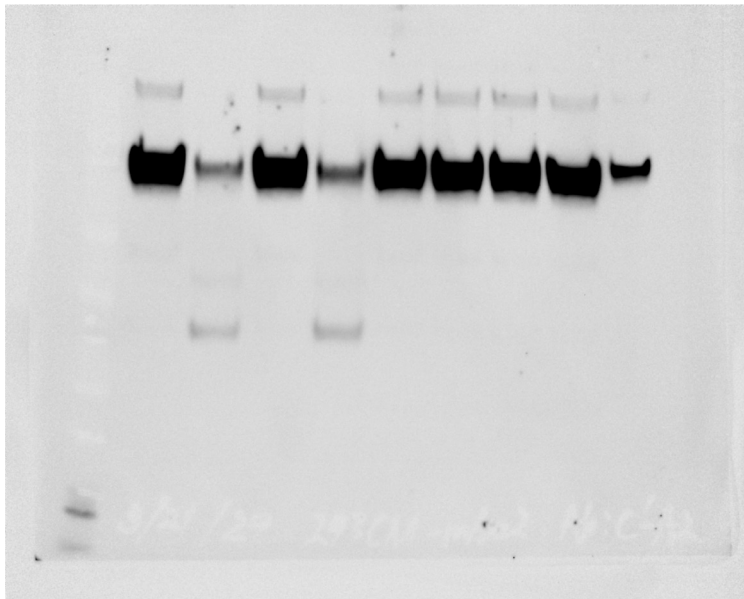
lanes used for the figure



Full unedited membrane for Figure 3C

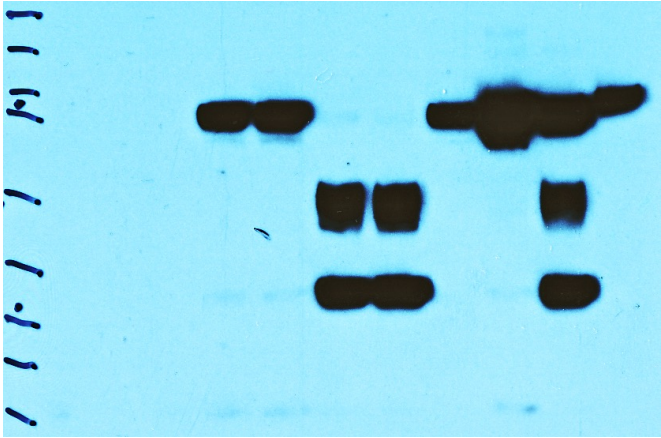
lanes used for the figure

---



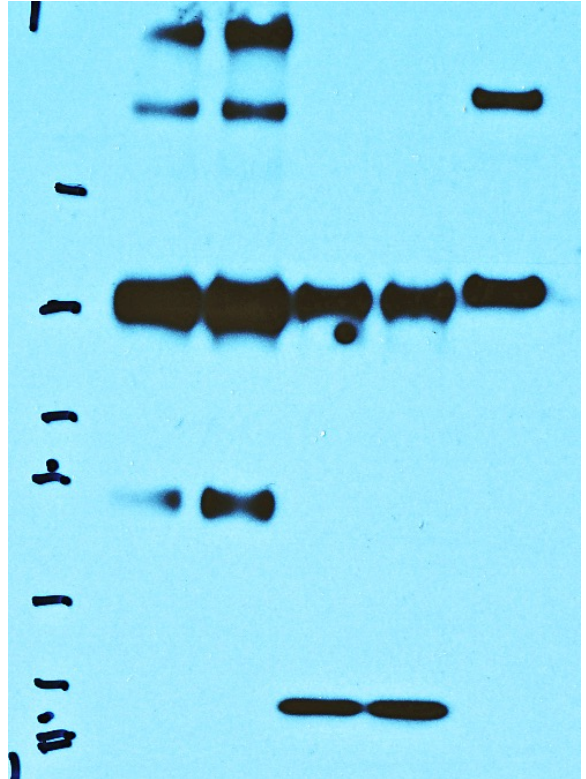
lanes used for the figure,  
left side, Reduced condition

---

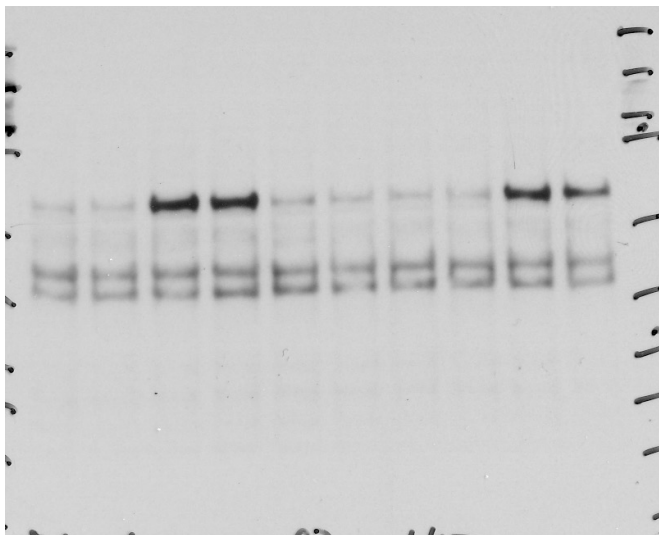


lanes used for the figure, right  
side, Non-reduced condition

---



lanes used for the figure, pAKT Ab,  
the lanes were run on the same gel but were noncontiguous

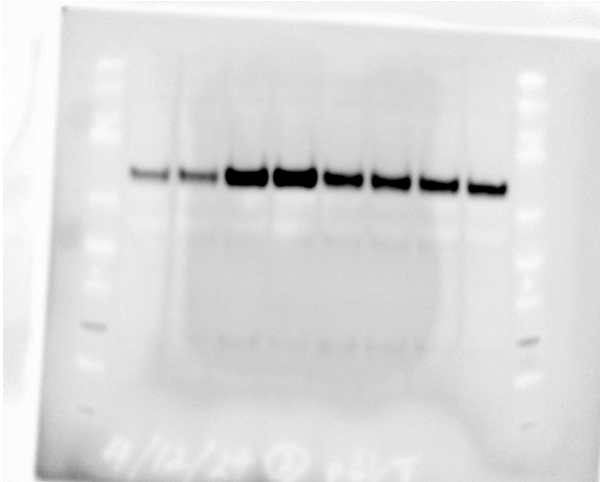


lanes used for the figure, AKT Ab,  
the lanes were run on the same gel but were noncontiguous



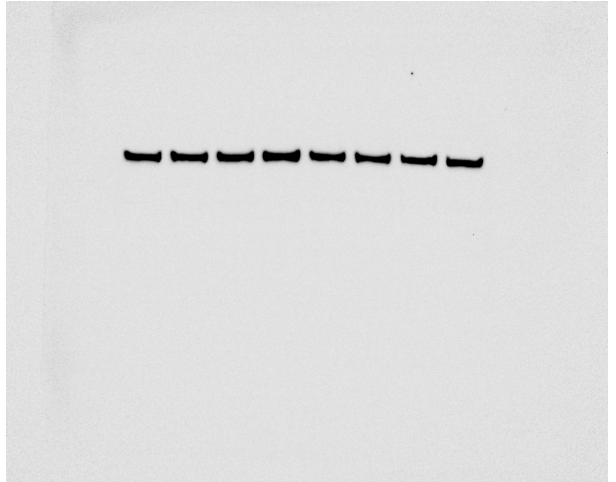
lanes used for the figure, pAKT

---



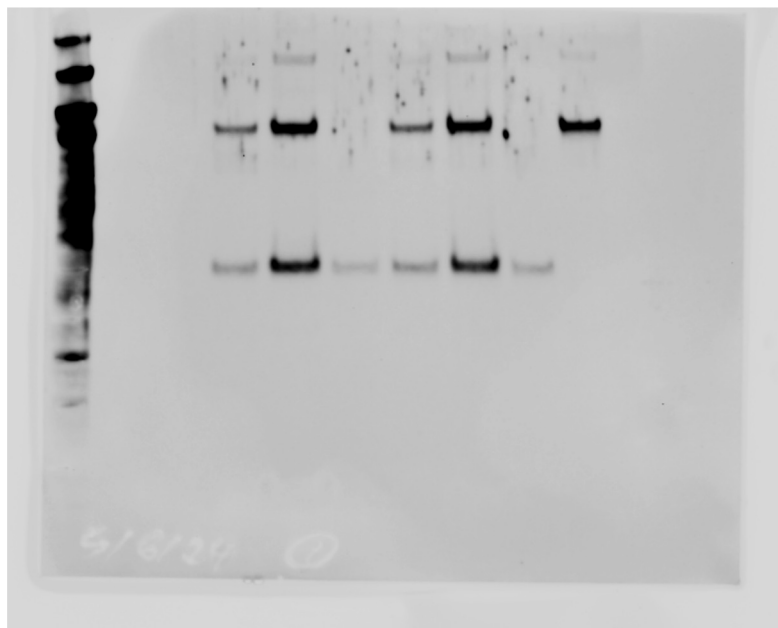
lanes used for the figure, AKT

---



Full unedited membrane for Figure 6A

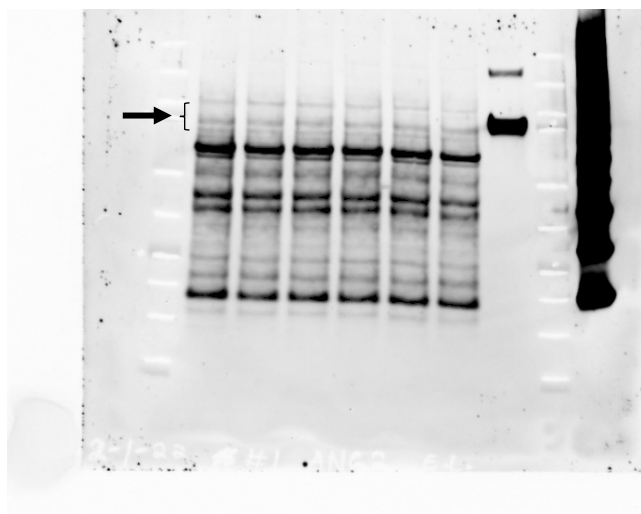
lanes used for the figure





lanes used for the figure, ANGPT2

---



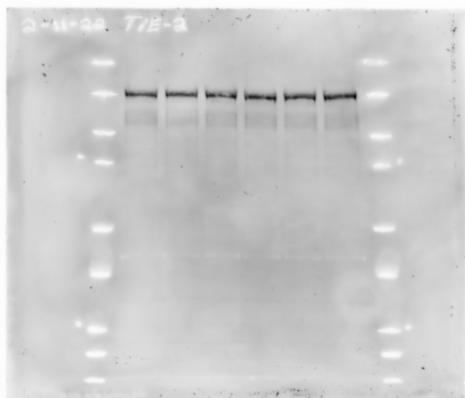
lanes used for the figure, ACTB

---



Full unedited membranes for Supplemental Figure 1C

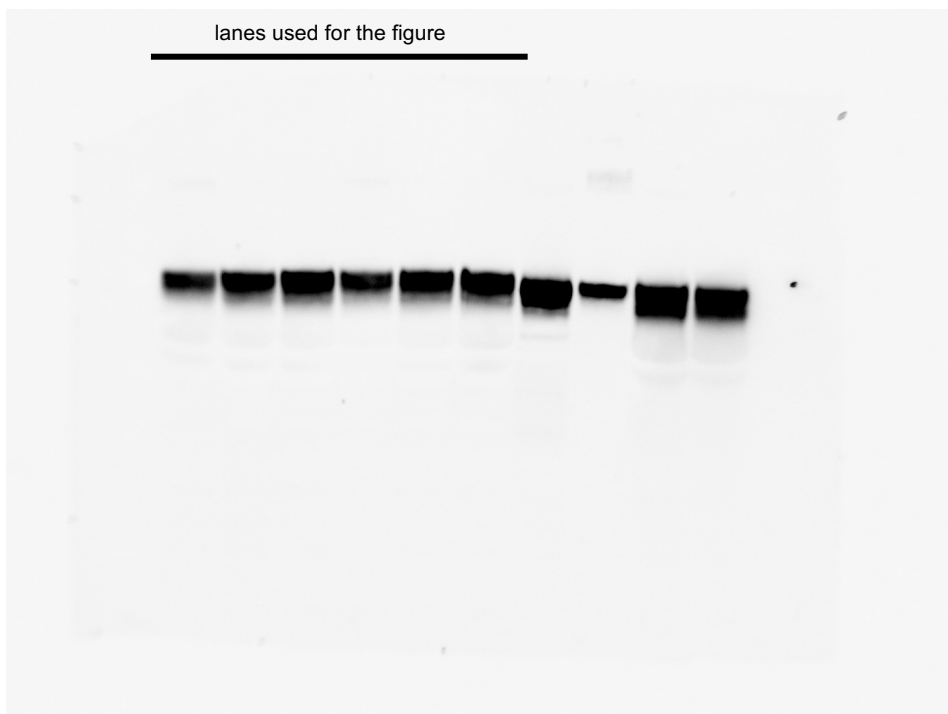
lanes used for the figure, Tie2



lanes used for the figure, ACTB



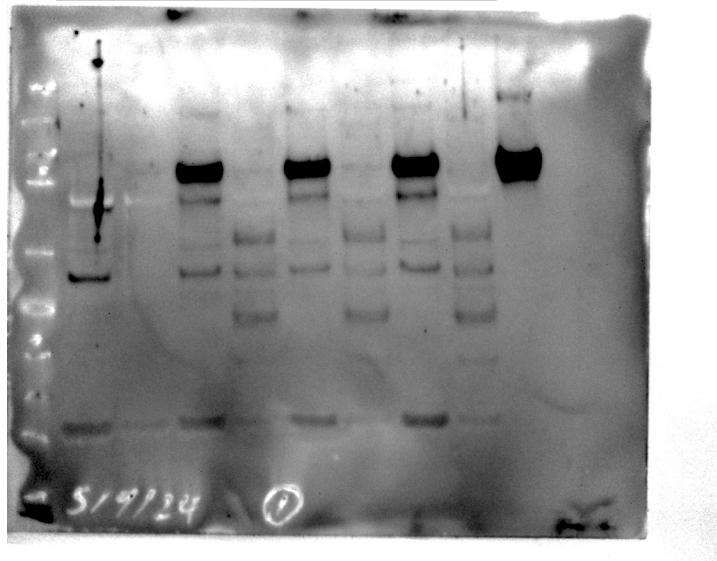
Full unedited membrane for Supplemental Figure 1D



Full unedited membrane for Supplemental Figure 1E

lanes used for the figure

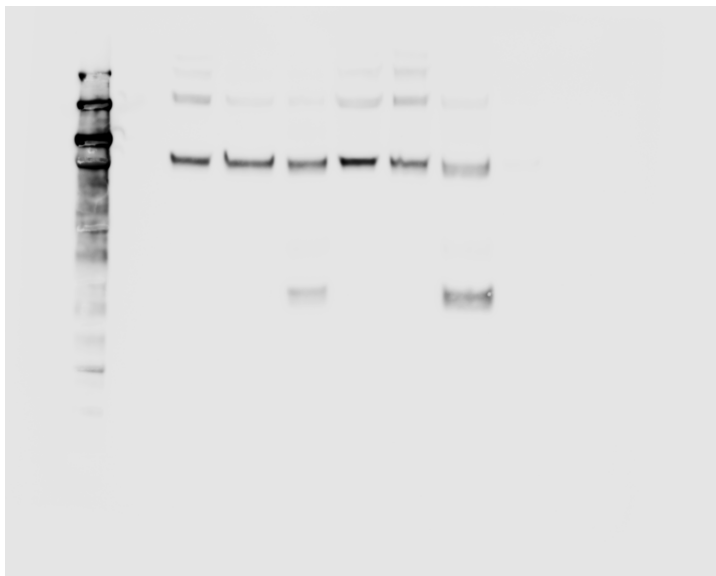
---



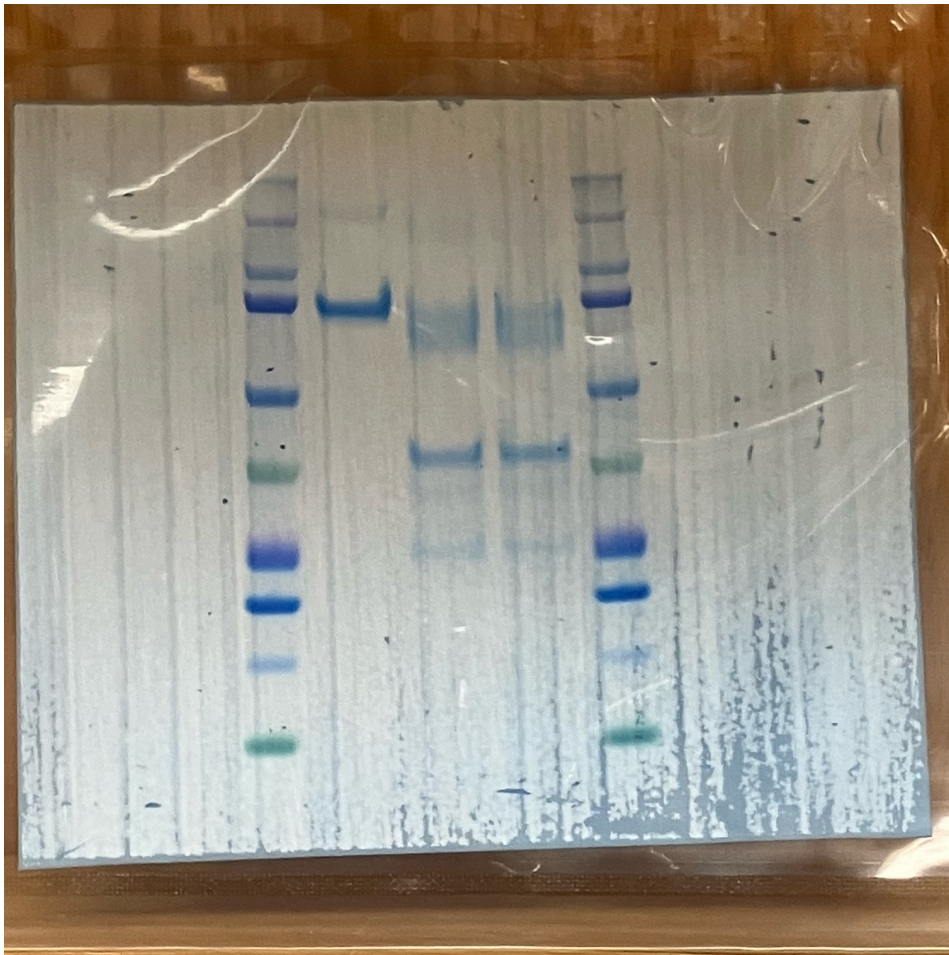
Full unedited membrane for Supplemental Figure2A

lanes used for the figure

---



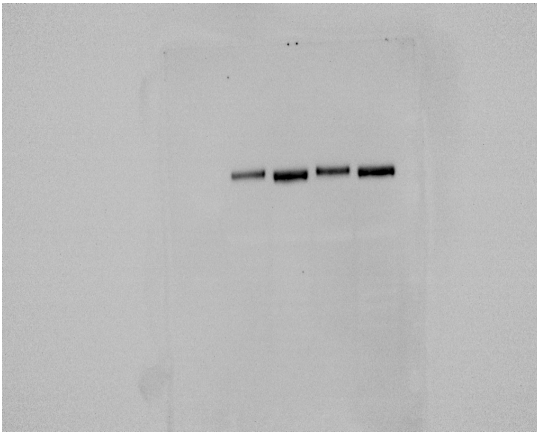
lanes used for the figure



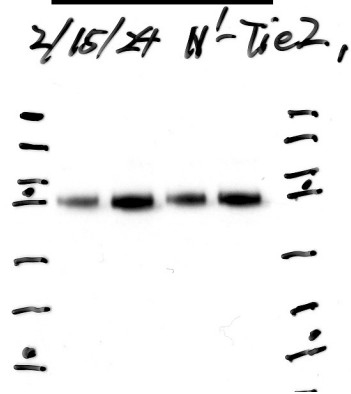
lanes used for the figure



lanes used for the figure, sTie1



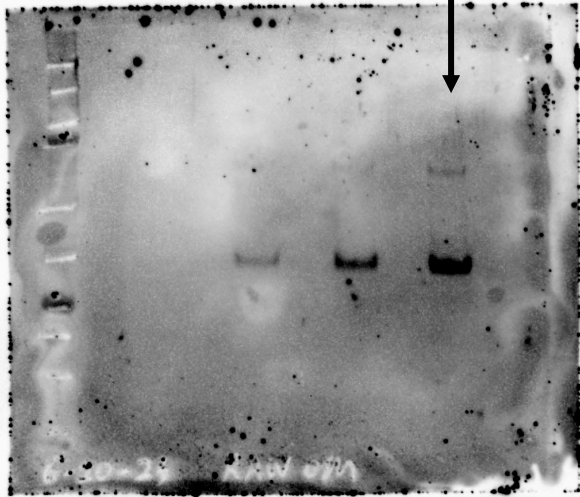
lanes used for the figure, sTie2



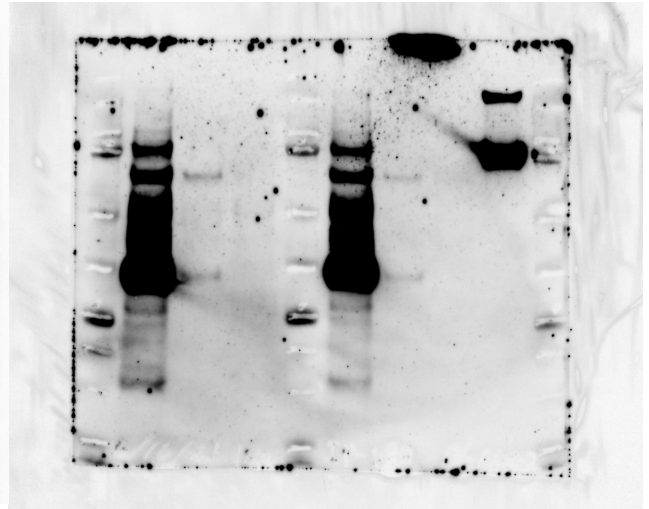


Full unedited membrane for Supplemental Figure 5

lane used for the figure, CM-Mq<sup>LPS</sup> + rANGPT2

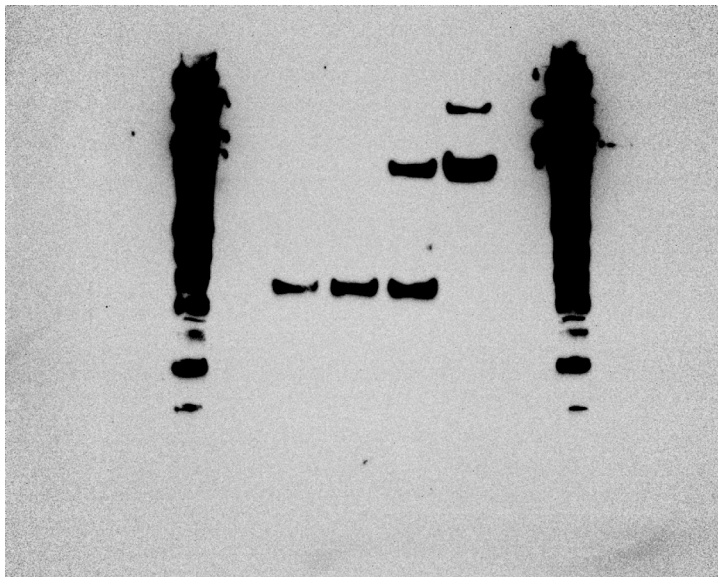


lanes used for the figure, pull-down



Full unedited membrane for Supplemental Figure 6G

lanes used for the figure



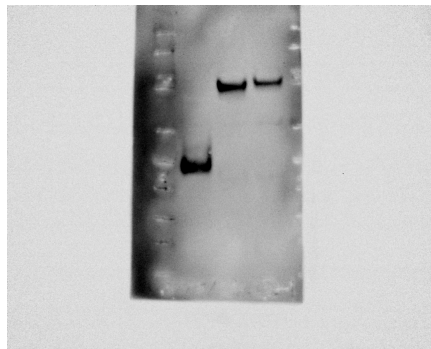
Full unedited membrane for Supplemental Figure 6J

lanes used for the figure, C'-ANGPT2

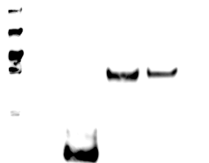


This Figure is also used in Figure 2D

lanes used for the figure, ANGPT2 (404-432)

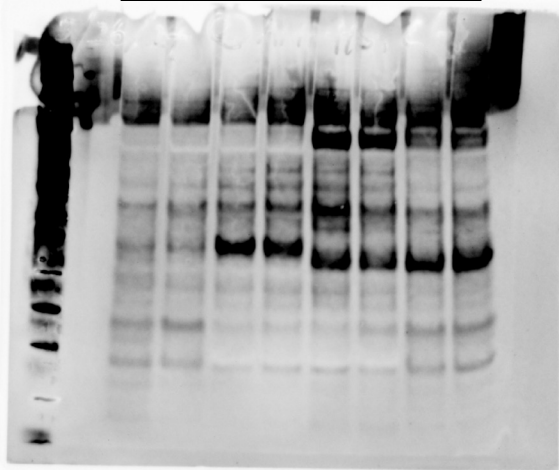


lanes used for the figure, His-tag



Full unedited membrane for Supplemental Figure 6K, L

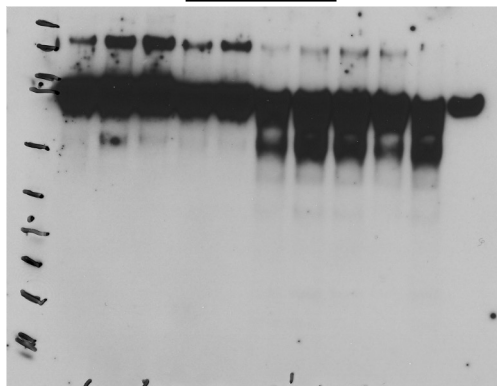
lanes used for the figure, His-tag



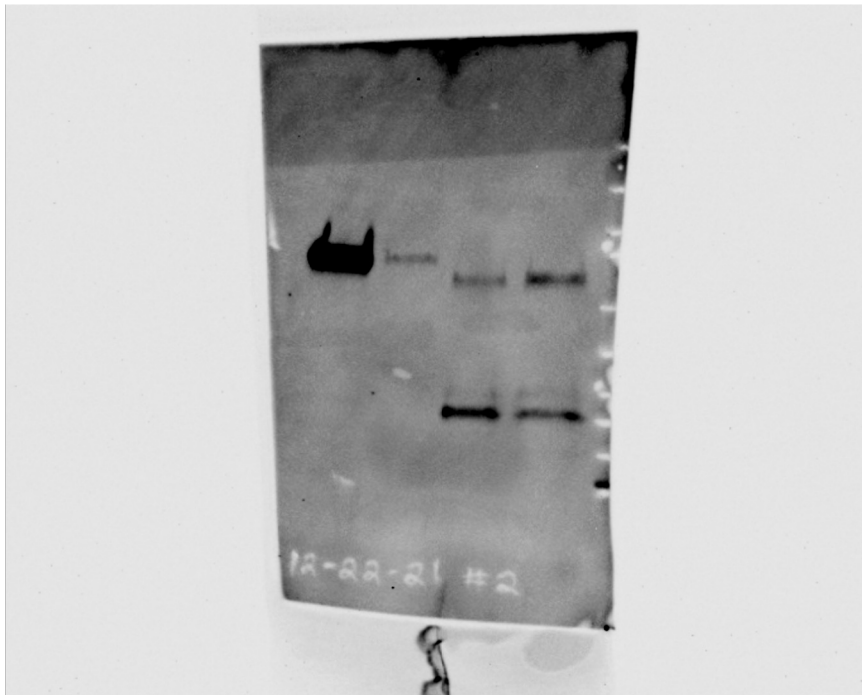
lanes used for the figure,  $\beta$ -actin



lanes used for the figure



lanes used for the figure



Full unedited membrane for Supplemental Figure 10

lanes used for the figure

