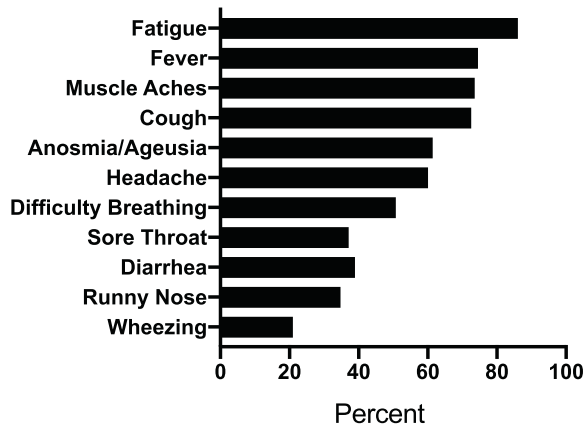
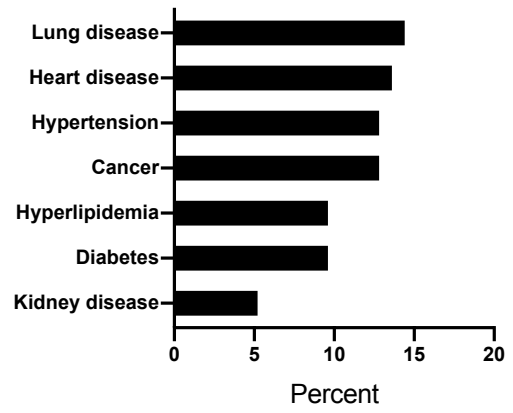


A



B



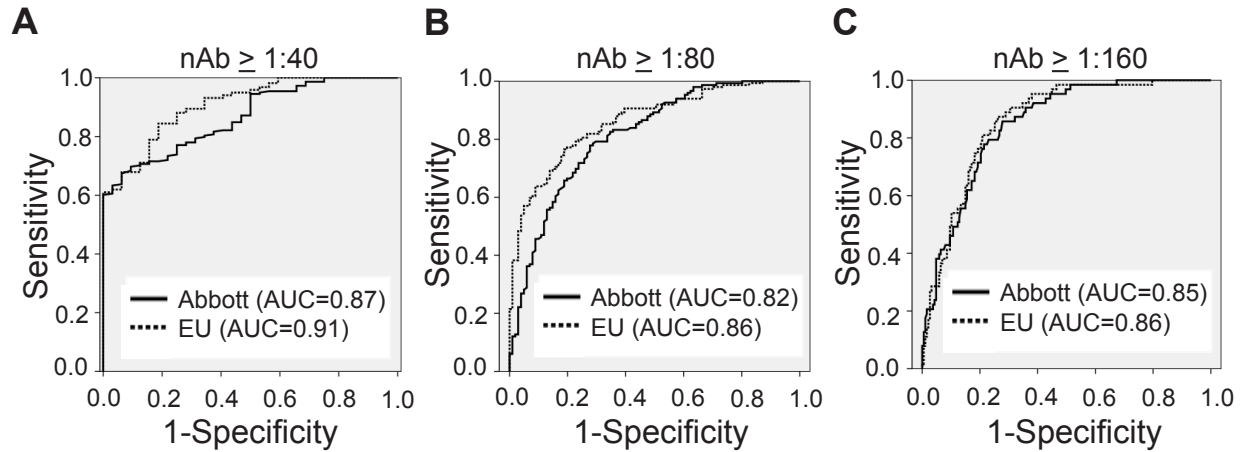
652

653

**Supplemental Figure 1.** Prevalence of symptoms (A) and comorbidities (B) in SARS-CoV-2-

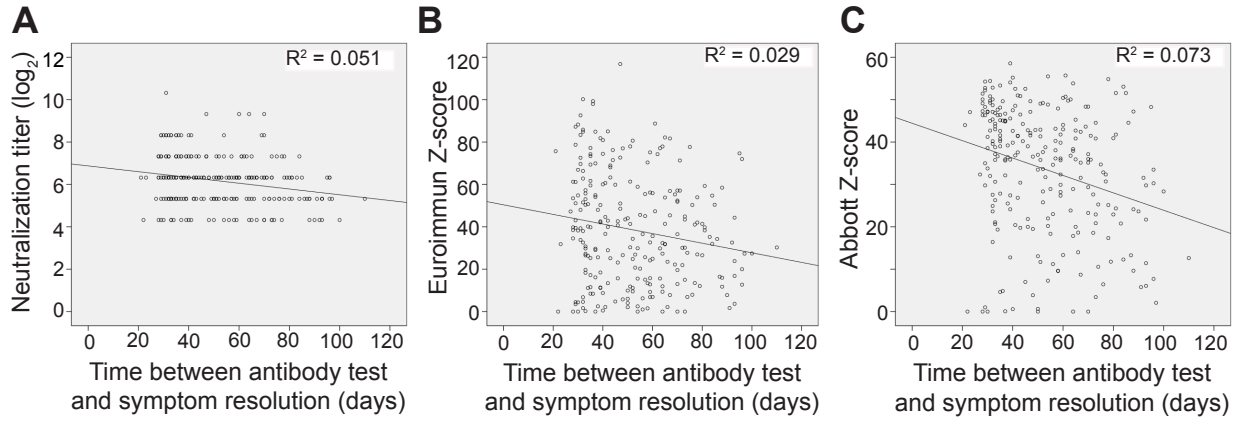
654

infected persons screened for convalescent plasma donation.



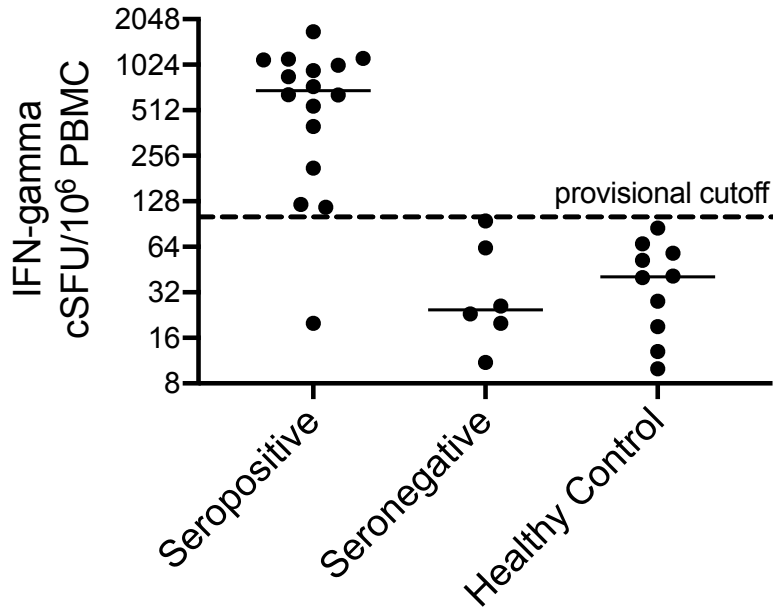
655

656 **Supplemental Figure 2.** Receiver operating characteristic (ROC) curves for predicting nAb  
 657 levels. ROC curves for nAb titers (A)  $\geq$  1:40, (B)  $\geq$  1:80, and (C)  $\geq$  1:160 based on z-scores from  
 658 the Abbott and Euroimmun assays. Abbreviations: nAb, neutralizing antibody; AUC, area under  
 659 the curve; EU, Euroimmun.



660

661 **Supplemental Figure 3.** Cross-sectional analyses of candidate COVID-19 convalescent plasma  
 662 donors with nAb titers of 1:40 or greater at the time of initial blood draw. The X axis is the  
 663 number of days between the resolution of COVID-19 symptoms and the time of blood sampling.  
 664 The dotted line represents the best fit by linear regression.



665 **Supplemental Figure 4.** PBMC interferon-gamma ELISPOT responses to SARS-CoV-2  
 666 peptides covering the major structural NP, S, and membrane proteins. Each symbol represents a  
 667 single donor. Seropositive categorization (x-axis) is based on positive serologic results from  
 668 either (or both) of two blood draws, whereas the seronegative categorization is based on negative  
 669 serologic results from both blood draws. IFN-gamma ELISPOTs were conducted on PBMCs  
 670 obtained from the second blood draw. Background corrected spot-forming units (cSFU) are  
 671 shown on the y-axis in log<sub>2</sub> scale. The provisional cutoff denotes the upper limit of IFN-gamma  
 672 ELISPOT results among healthy and seronegative subjects.