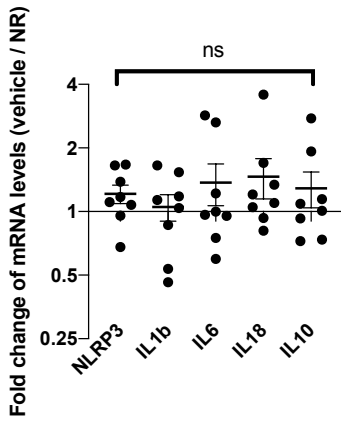
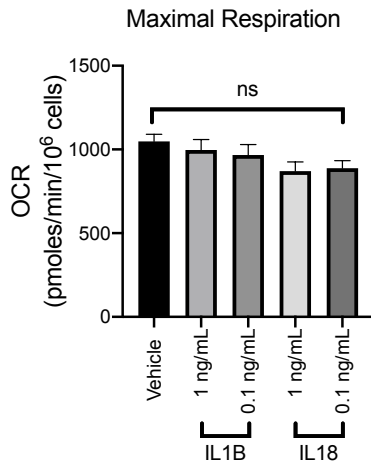


Supplemental Figure 1. A, Maximal respiration of healthy PBMCs post 4-hour vehicle or 10 ng/mL LPS treatment with or without 1mM NR. N=4. Data analyzed with 1-way ANOVA with multiple comparisons. B, Relative mRNA levels of NLRP3 and pro-inflammatory cytokines of healthy PBMCs post 4-hour vehicle or 10 ng/mL LPS treatment. P-value determined by paired two-tailed t test. C. Percent change of NLRP3 and cytokine mRNA level of healthy PBMCs post 4-hour treatment of 10 ng/mL LPS with 1mM NR treatment relative to LPS alone. **P-value <0.005 by paired two-tailed t-test. ns: not significant. All data shown in means +/- SEM.

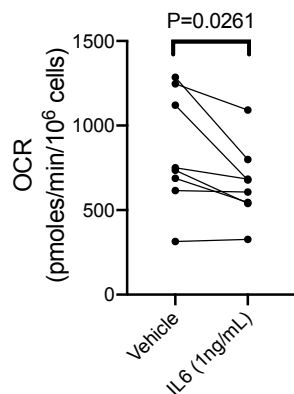


Supplemental Figure 2. Ratios of mRNA levels of PBMC from Stage D HF participants post 4-hour treatments of 1 mM NR treatments relative to vehicle. N=8. P-value determined by paired two-tailed t-test.



Supplemental Figure 3. Maximal respiration of healthy PBMCs post 4-hour treatments of vehicle or increasing concentrations of recombinant human IL1B or IL18. N=4. Data analyzed with 1-way ANOVA with multiple pairwise comparisons against vehicle.

Monocyte Maximum Respiration



Supplemental Figure 4. Maximal Respiration of isolated monocytes post 4-hour treatment of vehicle or 1 ng/mL of recombinant human IL6. N=7. P-value determined by paired 2-tailed t-test.

	Age	Gender	Etiology of CM	Inotropes	Mechanical Support	LVEF (%)	Days on NR	HTN	DM	Former Smoker	Ethnicity
Subject 1	32	M	NICM	Milrinone	none	26	5	no	no	yes	Caucasian
Subject 2	64	M	NICM	Dobutamine and Milrinone	Impella	16	5	no	no	no	Caucasian
Subject 3	27	M	NICM	Dobutamine	none	27	9	no	no	yes	Asian
Subject 4	30	M	NICM	none	none	23	6	yes	no	yes	Black

Supplemental Table 1. Background information of Stage D heart failure subjects who underwent NR administration. M: male. CM: cardiomyopathy. LVEF: left ventricular ejection fraction. NR: Nicotinamide Riboside. HTN: hypertension. DM: diabetes mellitus. NICM: Non-ischemic cardiomyopathy.

	Monocytes (1000/ μ L)	Lymphocytes (1000/ μ L)
Mean	0.75	1.59
STD	0.30	0.69
Range	0.13-1.26	0.26-2.95
Reference Range	0-0.8	1-4.8

Supplemental Table 2. Monocyte and lymphocyte counts of the 19 Stage D HF subjects by complete blood count (CBC). For 18 out of 19 subjects, the CBC was done within 15 days (mean 7.7 days) prior to the experimental blood sampling. For the remaining subject, the CBC was done 30 days prior to experimental blood sampling.