

(B) Publication Quality PDF

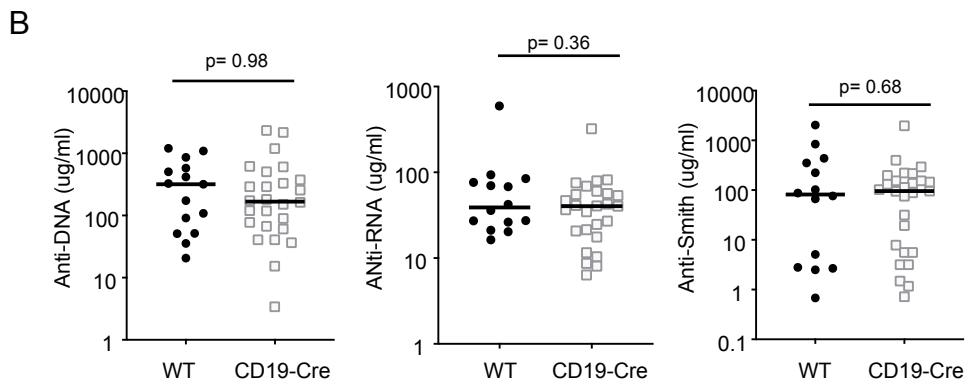
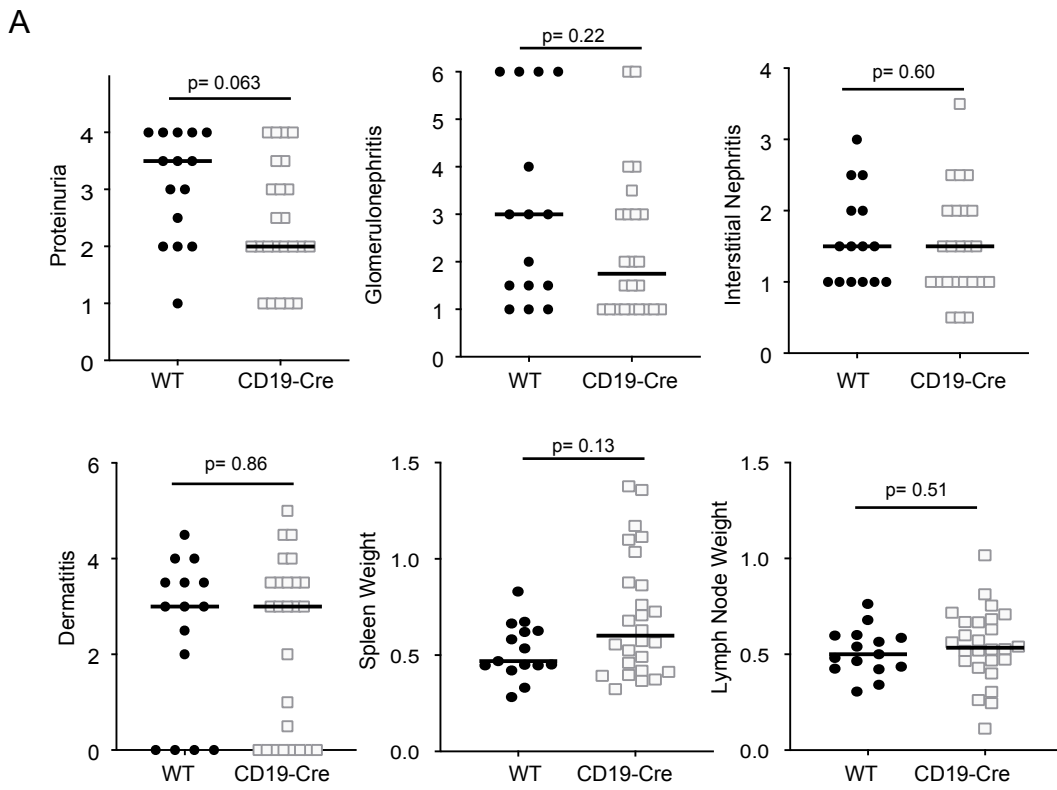
Supplemental Figure 1: **CD19-Cre knock-in allele does not alter disease phenotype, antibody profile, or cellular composition in MRL/lpr mice.**

(A) Evaluation of phenotypic markers of disease including proteinuria, glomerulonephritis, interstitial and perivascular renal infiltrates, dermatitis, spleen weight, and lymph node weight for CD19-Cre^{-/-} vs CD19-Cre^{+/-} n= 15 and 26 respectively.

(B) Serum concentrations of anti-nucleosome, anti-Sm and anti-RNA IgG from CD19-Cre^{-/-} vs CD19-Cre^{+/-} MRL/lpr mice. Scatter plots display data from individual mice with black lines representing median values. No comparisons were statistically significant by two-tailed Mann-Whitney test. (C) Percentage of cells from each lineage represented as mean and standard deviation with associated p-values as determined by two-tailed Mann-Whitney test.

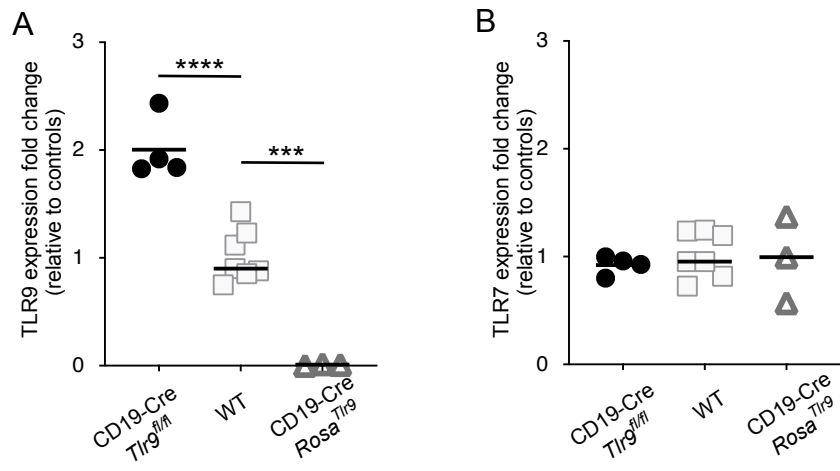
Supplemental Figure 2: **TLR9 expression does not alter TLR7 transcription.**

(A) qPCR analysis of TLR9 expression in sorted B cells from CD19-Cre *Rosa^{Tlr9}* mice (n=4) control MRL/lpr (n=7) and mice and CD19-Cre *Tlr9^{fl/fl}* mice (n=3). (B) qPCR analysis of TLR7 expression in sorted B cells from CD19-Cre *Rosa^{Tlr9}* mice (n=4) control MRL/lpr (n=7) and mice and CD19-Cre *Tlr9^{fl/fl}* mice (n=3). Scatter plots display fold change mRNA expression data from individual mice with black lines showing median values. *** p<0.001, **** p<0.0001 one-tailed Mann-Whitney U test.



C

	CD19-Cre neg	CD19-Cre +	p-value
B cells (% of total cells)	33 ± 11	24 ± 13	0.17
Plasmablasts (% of total cells)	2.1 ± 1.1	1.9 ± 1.2	0.54
B cell Subsets			
Follicular (as a % of B cells)	37 ± 12	36 ± 10	0.88
Marginal Zone (as a % of B cells)	36 ± 6	34 ± 13	0.97
Germinal Center (as a % of B cells)	0.7 ± 1.5	0.5 ± 0.8	0.73
CD8 T cells (% of total cells)			
CD8 T cells (% of total cells)	13 ± 4	12 ± 4	0.71
Naïve CD8 T cells (as a % of CD8 T cells)	13 ± 4	14 ± 4	0.92
CD4 T cells (% of total cells)			
CD4 T cells (% of total cells)	16 ± 2	15 ± 4	0.38
Naïve CD4 T cells (as a % of CD8 T cells)	4.8 ± 3.1	4.1 ± 2.6	0.59



Supplemental Table 1: Deletion Efficiency *Tlr9* of Cre lines on the MRL/lpr background

Strain	Cell Type	n	% Deletion Efficiency	Assay
CD19-Cre <i>Tlr9^{fl/fl}</i>	B cell	2	96.3	qPCR
	cDC	2	0	
	pDC	2	0	
	plasmablast	2	6.0	
LysM-Cre <i>Tlr9^{fl/fl}</i>	cDC	6	26.5	qPCR
	B cell	6	12.3	
	T cell	6	8.0	
	Macrophages	6	58.2	
	Neutrophils	6	69.3	
MRP8-Cre <i>Tlr9^{fl/fl}</i>	B cell	5	4.5	qPCR
	Macrophages	5	2.3	
	Neutrophils	5	90.6	
	T cell	5	0.0	
CD11c-Cre <i>Tlr9^{fl/fl}</i>	cDC	2	95.8	qPCR
	pDC	2	91.7	
	B cell	2	62.8	
	plasmablast	2	93.2	

Supplemental Table 2: Percent cell composition of MRL//*pr* spleens from indicated strains

	<i>Tlr9</i> ^{fl/fl}	CD19-Cre <i>Tlr9</i> ^{fl/fl}	<i>Tlr9</i> ^{fl/fl}	LysM-Cre <i>Tlr9</i> ^{fl/fl}	<i>Tlr9</i> ^{fl/fl}	MRP8-Cre <i>Tlr9</i> ^{fl/fl}	<i>Tlr9</i> ^{fl/fl}	CD11c-Cre <i>Tlr9</i> ^{fl/fl}	ROSA ^{<i>Tlr9</i>}	CD19-Cre ROSA ^{<i>Tlr9</i>}
B cells	27.5 ± 12	19.2 ± 11.8	21.8 ± 11.8	23.0 ± 13.0	34 ± 13	31 ± 15	31 ± 11	27.7 ± 9.9	21.1 ± 8.1	19.1 ± 10.8
Plasmablasts	2.1 ± 1.2	2.1 ± 1.7	1.7 ± 0.8	1.8 ± 1.1	1.26 ± 0.69	0.99 ± 0.82	2.9 ± 1.1	4.5 ± 1.6	1.82 ± 0.81	1.83 ± 1.03
cDCs	0.50 ± 0.16	0.58 ± 0.21	0.37 ± 0.20	0.36 ± 0.17	0.31 ± 0.16	0.28 ± 0.12	0.72 ± 0.22	0.70 ± 0.29	1.19 ± 0.49	1.24 ± 0.42
pDCs	0.26 ± 0.11	0.26 ± 0.17	0.11 ± 0.1	0.11 ± 0.08	0.11 ± 0.04	0.11 ± 0.05	0.26 ± 0.11	0.23 ± 0.12	0.12 ± 0.05	0.14 ± 0.05
CD4 T cells	15.3 ± 2.7	16.7 ± 3.5	10.0 ± 2.4	9.8 ± 2.9	10.7 ± 2.7	12.6 ± 3.0	17.3 ± 1.7	17.7 ± 3.2	10.9 ± 2.65	11.3 ± 3.1
CD4 naïve T cells (% of Total CD4)	5.9 ± 2.4	3.6 ± 1.5	6.9 ± 4.9	6.8 ± 5.0	6.1 ± 2.6	7.7 ± 3.4	2.7 ± 1.5	1.96 ± 1.21	7.8 ± 3.3	7.7 ± 5.0
CD8 T cells	10.0 ± 2.2	9.9 ± 3.5	10.1 ± 3.4	10.4 ± 3.8	10.1 ± 3.3	10.9 ± 4.5	10.2 ± 2.7	10.0 ± 2.8	11.5 ± 3.7	10.1 ± 3.3
CD8 naïve T cells (% of Total CD8)	13.9 ± 3.5	11.0 ± 4.2	14.0 ± 6.4	11.9 ± 6.1	15.4 ± 3.6	16.3 ± 3.6	8.3 ± 4.7	5.96 ± 3.9	15.0 ± 3.9	15.2 ± 5.0
CD11b+	4.25 ± 1.45	4.6 ± 1.8	6.0 ± 3.2	6.3 ± 3.0	7.4 ± 2.6	7.6 ± 2.2	3.81 ± 0.82	3.9 ± 1.3	6.7 ± 1.7	7.64 ± 2.2
Macrophages	0.94 ± 0.43	1.15 ± 0.57	0.83 ± 0.47	0.84 ± 0.34	1.11 ± 0.55	1.13 ± 0.55	0.97 ± 0.36	0.99 ± 0.47	1.29 ± 0.55	1.51 ± 0.73
Monocytes	0.75 ± 0.29	0.85 ± 0.64	0.73 ± 0.38	0.72 ± 0.35	0.79 ± 0.47	0.78 ± 0.4	0.68 ± 0.22	0.67 ± 0.24	0.83 ± 0.62	0.96 ± 0.52
Neutrophils	1.17 ± 0.73	1.16 ± 0.81	3.3 ± 2.2	3.5 ± 2.1	4.0 ± 1.6	4.1 ± 1.6	0.89 ± 0.25	0.91 ± 0.36	3.55 ± 0.88	4.3 ± 1.5

Grey comparisons indicate statistically significant differences $p < 0.05$ by Mann Whitney

Supplemental Table 3: Cell counts from MRL//pr spleens from indicated strains

	<i>Tlr9^{fl/fl}</i>	CD11c-Cre <i>Tlr9^{fl/fl}</i>	<i>Tlr9^{fl/fl}</i>	CD19-Cre <i>Tlr9^{fl/fl}</i>	ROSA ^{<i>Tlr9</i>}	CD19-Cre ROSA ^{<i>Tlr9</i>}
B cells	93 ± 42	88 ± 29	75 ± 33	56 ± 31	65 ± 27	58 ± 41
Plasmablasts	10.1 ± 6.9	17.0 ± 11.6	6.2 ± 4.0	6.4 ± 5.5	5.3 ± 2.7	4.8 ± 2.2
cDCs	2.7 ± 2.0	1.5 ± 1.8	1.4 ± 0.6	1.8 ± 0.8	4.3 ± 2.9	4.1 ± 1.7
pDCs	0.93 ± 0.64	0.75 ± 0.50	0.73 ± 0.35	0.83 ± 0.55	0.47 ± 0.23	0.48 ± 0.27
CD4 T cells	62 ± 44	63 ± 33	44 ± 14	57 ± 22	38 ± 12	39 ± 18
CD4 naïve T cells	1.7 ± 1.5	1.2 ± 0.9	2.5 ± 1.4	1.8 ± 1.5	3.0 ± 1.7	3.6 ± 3.3
CD8 T cells	36 ± 25	33 ± 12	29 ± 10	33 ± 16	40 ± 15	38 ± 24
CD8 naïve T cells	3.0 ± 2.3	2.2 ± 1.8	4.1 ± 1.8	4.0 ± 2.0	6.2 ± 3.0	6.1 ± 4.2
CD11b+	13 ± 8	14 ± 9	12 ± 7	16 ± 10	24 ± 8	26 ± 13
Macrophages	3.3 ± 2.0	3.4 ± 1.9	2.6 ± 1.7	4.0 ± 2.5	4.6 ± 2.0	5.2 ± 3.9
Monocytes	2.3 ± 1.6	2.4 ± 1.6	2.2 ± 1.4	3.3 ± 3.2	2.8 ± 2.1	3.2 ± 1.6
Neutrophils	3.3 ± 2.5	3.5 ± 2.8	3.5 ± 3.0	4.5 ± 4.7	12.6 ± 3.5	14.5 ± 6.6

Grey comparisons indicate statistically significant differences dark grey p<0.05, light grey p<0.1 by Mann Whitney