

Enterotoxigenic *Escherichia coli*–blood group A interactions intensify diarrheal severity

Pardeep Kumar, ... , Mark Donowitz, James M. Fleckenstein

J Clin Invest. 2019;129(7):2980-2980. <https://doi.org/10.1172/JCI130874>.

Corrigendum

Original citation: *J Clin Invest.* 2018;128(8):3298–3311. <https://doi.org/10.1172/JCI97659> Citation for this corrigendum: *J Clin Invest.* 2019;129(7):2980. <https://doi.org/10.1172/JCI130874> The corresponding author recently notified the editors that Figure 5A of this article contained microscopy images that were previously published in Figure 2A of an *American Journal of Tropical Medicine and Hygiene* publication by this group (1). The same images were used to demonstrate the presence of the A blood group in HT-29 cells. This experiment was repeated multiple times, and the authors are updating this panel with an independent replicate. The corrected panel appears below. The authors regret the error.

Find the latest version:

<https://jci.me/130874/pdf>



Corrigendum

Enterotoxigenic *Escherichia coli*-blood group A interactions intensify diarrheal severity

Pardeep Kumar, F. Matthew Kuhlmann, Subhra Chakraborty, A. Louis Bourgeois, Jennifer Foulke-Abel, Brunda Tumala, Tim J. Vickers, David A. Sack, Barbara DeNearing, Clayton D. Harro, W. Shea Wright, Jeffrey C. Gildersleeve, Matthew A. Ciorba, Srikanth Santhanam, Chad K. Porter, Ramiro L. Gutierrez, Michael G. Prouty, Mark S. Riddle, Alexander Polino, Alaullah Sheikh, Mark Donowitz, and James M. Fleckenstein

Original citation: *J Clin Invest*. 2018;128(8):3298–3311. <https://doi.org/10.1172/JCI97659>.

Citation for this corrigendum: *J Clin Invest*. 2019;129(7):2980. <https://doi.org/10.1172/JCI130874>.

The corresponding author recently notified the editors that Figure 5A of this article contained microscopy images that were previously published in Figure 2A of an *American Journal of Tropical Medicine and Hygiene* publication by this group (1). The same images were used to demonstrate the presence of the A blood group in HT-29 cells. This experiment was repeated multiple times, and the authors are updating this panel with an independent replicate. The corrected panel appears below.

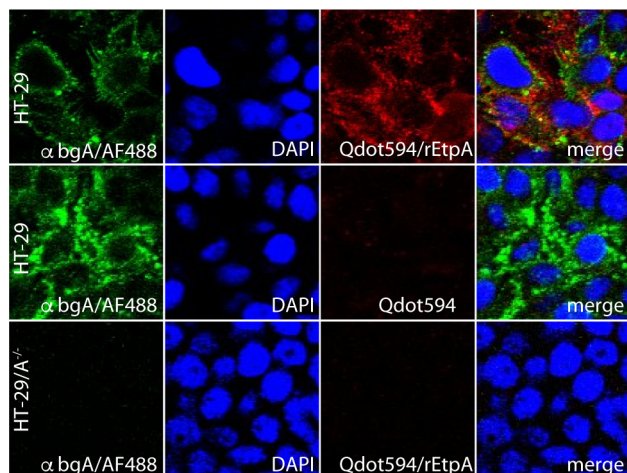


Figure 5

The authors regret the error.

1. Kuhlmann FM, Santhanam S, Kumar P, Luo Q, Ciorba MA, Fleckenstein JM. Blood group O-dependent cellular responses to cholera toxin: parallel clinical and epidemiological links to severe cholera. *Am J Trop Med Hyg*. 2016;95(2):440–443.