

High-accuracy determination of internal circadian time from a single blood sample

Nicole Wittenbrink, ... , Dieter Kunz, Achim Kramer

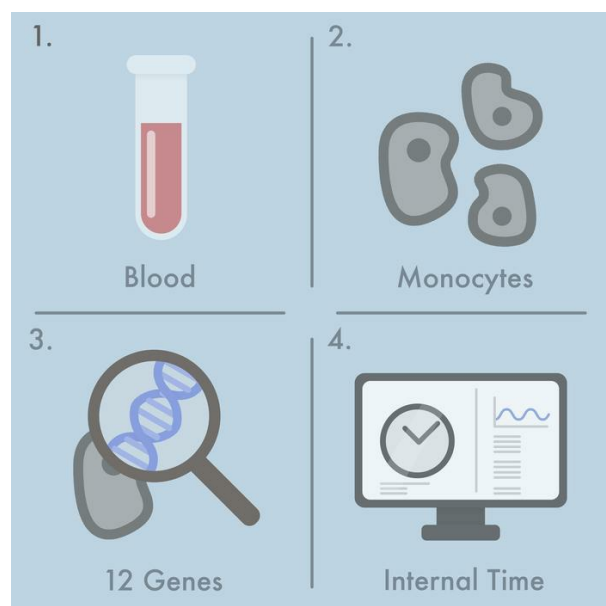
J Clin Invest. 2018. <https://doi.org/10.1172/JCI120874>.

Clinical Research and Public Health

In-Press Preview

Genetics

Graphical abstract



Find the latest version:

<https://jci.me/120874/pdf>



High-accuracy determination of internal circadian time from a single blood sample

Nicole Wittenbrink^{1,2*}, Bharath Ananthasubramaniam^{1,3*}, Mirjam Münch^{1,4,5*}, Barbara Koller¹, Bert Maier¹, Charlotte Weschke¹, Frederik Bes^{4,5}, Jan de Zeeuw^{5,6}, Claudia Nowozin^{4,5}, Amely Wahnschaffe^{4,5}, Sophia Wisniewski^{4,5}, Mandy Zaleska⁶, Osnat Bartok⁷, Reut Ashwal-Fluss⁷, Hedwig Lammert⁸, Hanspeter Herzel³, Michael Hummel⁸, Sebastian Kadener^{7,9}, Dieter Kunz^{4,5,6}, Achim Kramer^{1,#}

¹ Charité Universitätsmedizin Berlin, corporate member of Freie Universität Berlin, Humboldt-Universität zu Berlin, and Berlin Institute of Health, Laboratory of Chronobiology, Berlin, Germany

² Humboldt-Universität zu Berlin, Department of Biology, Systems Immunology Lab, Berlin, Germany

³ Humboldt-Universität zu Berlin, Institute for Theoretical Biology, Berlin, Germany

⁴ St-Hedwig-Krankenhaus, Clinic for Sleep & Chronomedicine, Berlin, Germany

⁵ Charité Universitätsmedizin Berlin, Institute of Physiology, Berlin, Germany

⁶ Intellux GmbH, Berlin, Germany

⁷ The Hebrew University, Biological Chemistry Department, Jerusalem, Israel

⁸ Charité Universitätsmedizin Berlin, Institute of Pathology, Berlin, Germany

⁹ Brandeis University, Department of Biology, Waltham, MA, USA

* these authors contributed equally

correspondence:

Achim Kramer

Charité Universitätsmedizin Berlin

Laboratory of Chronobiology

Charitéplatz 1

10117 Berlin

Germany

Tel. +49-30-450-524263

Email achim.kramer@charite.de

Conflict of interest

The study was supported by Intellux GmbH Berlin. J.Z. and M.Z. are employees of Intellux GmbH. D.K. is shareholder of Intellux GmbH. Charité Universitätsmedizin Berlin has filed a patent application (EP17177735) relating to the BodyTime assay, in which A.K., B.A. and N.W. are listed as inventors; decision is pending.

Role of the funding source

This study was supported by the Bundesministerium für Bildung und Forschung, Germany (FKZ: 13N13160 and 13N13162) and Intellux GmbH Berlin, Germany, which had no role in the design, conduct, analysis, interpretation, or decision to publish the study.

Abstract

BACKGROUND. The circadian clock is a fundamental and pervasive biological program that coordinates 24-hour rhythms in physiology, metabolism and behaviour, and it is essential to health. Whereas time-of-day adapted therapy is increasingly reported to be highly successful, it needs to be personalized since internal circadian time is different for each individual. In addition, internal time is not a stable trait, but is influenced by many factors including genetic predisposition, age, gender, environmental light levels and season. An easy and convenient diagnostic tool is currently missing.

METHODS. To establish a validated test, we followed a three-stage biomarker development strategy: (i) using circadian transcriptomics of blood monocytes from 12 individuals in a constant routine protocol combined with machine learning approaches, we identified biomarkers for internal time; (ii) these biomarkers were migrated to a clinically relevant gene expression-profiling platform (NanoString), and (iii) externally validated using an independent study with 28 early or late chronotypes.

RESULTS. We developed a highly accurate and simple assay (BodyTime) to estimate the internal circadian time in humans from a single blood sample. Our assay needs only a small set of blood-based transcript biomarkers and is as accurate as the current gold standard dim light melatonin onset method at smaller monetary, time and sample number cost.

CONCLUSION. The BodyTime assay provides a new diagnostic tool for personalization of healthcare according to the patient's circadian clock.

FUNDING. This study was supported by the Bundesministerium für Bildung und Forschung, Germany (FKZ: 13N13160 and 13N13162) and Intellux GmbH, Germany.

Introduction

Many fundamental aspects of human physiology, metabolism and behavior display 24-hour rhythms. These are found at all levels – from cells, tissues and organs to the entire organism (for a review see (1)). The master circadian clock resides in the hypothalamic suprachiasmatic nuclei (SCN) and coordinates daily rhythms of sleep and wakefulness, core body temperature and hormone secretion (such as cortisol, melatonin and many others). The circadian clock is synchronized to Earth's rotation primarily by light-dark cycles – a process called 'entrainment'. In addition, virtually every cell of the body contains a circadian oscillator that contributes to the daily rhythmicity of a large variety of physiological and metabolic activities including immune responses, xenobiotic detoxification as well as renal and cardiovascular functions. In fact, at least 40% of protein-coding genes show daily rhythms in expression in a tissue-specific manner not only in nocturnal rodents (2), but also in humans (3).

Given this ubiquity of daily rhythms, it is not surprising that the metabolism (pharmacokinetics) and effects (pharmacodynamics) of many, especially short half-life drugs change over the 24 hours. A recent study has shown that ~50% of all current drugs target the product of a circadian gene (3). Additionally, therapeutic outcomes such as survival after open-heart surgery (4), efficacy and tolerance of chemotherapy (5), wound healing (6), antibody response to vaccination (7) or effectiveness of acetylsalicylic acid application for cardiovascular diseases (8) all vary across time-of-day.

Therefore, tailoring drug administration or other therapeutic interventions to optimal time-of-day (chronotherapeutics) aims to maximize efficacy and/or improve tolerance (9). However, one key barrier to widespread adoption of chronotherapeutics is that humans are heterogeneous with respect to timing of their internal clocks as well as to their behaviour

influencing synchronization of their clocks to the environmental light-dark cycle. In other words, humans have different ‘phases of entrainment’ – a concept, which underlies different ‘chronotypes’ whose physiological and behavioural rhythms range from early (‘morning larks’) to late (‘night owls’), the majority being somewhere in between (10). Moreover, the phase of entrainment of humans is not a stable trait; it rather depends on many internal and external factors. It has a genetic basis (11), is age- and sex-dependent (10), depends on light exposure level (12, 13), on the season (12, 14) as well as on the location within the time zone (10).

Therefore, any timed therapeutic intervention needs to be personalized. In other words, we need a simple diagnostic tool to read out objectively the internal time of an individual at a given moment. The present approaches to assess internal time are either based on questionnaires and therefore not objective (10, 15); or they are cumbersome and costly requiring multiple measurements under controlled conditions. The current gold standard to assess circadian phase is to determine the time point when endogenous melatonin secreted from the pineal gland reaches a predefined threshold concentration in saliva or blood plasma (dim light melatonin onset, DLMO) (16, 17). Because light suppresses melatonin secretion, sampling has to be carried out under controlled dim light conditions. Moreover, the sampling rate (every 30-60 minutes over a period of 5-6 h) makes the protocol inconvenient to be used in daily clinical routine. Together, the current situation is suboptimal, which is unfortunate because there is an increasing need for internal circadian time assessment as reflected by inclusion of DLMO in the latest catalogue of diagnostic criteria for circadian rhythm sleep disorders (18).

The estimation of internal circadian time from single or multiple samples was pioneered by Ueda et al. (19). Their molecular-timetable method was originally developed on

mouse liver transcripts and later translated to humans by analyzing blood metabolites from two samples taken 12 hours apart (20). Subsequent studies applied machine learning approaches (ZeitZeiger and partial least squares) to circadian transcriptomes from human peripheral blood mononuclear cells (PBMCs), which however did not result in a prediction accuracy similar to the current gold standard DLMO measurement (21, 22). In addition, the identified biomarkers were not validated in truly independent studies and the measurement platforms were not adapted for clinical usage.

Here, we present a simple solution to determine internal time of an individual from a single blood sample taken at any time during the day. To establish a *validated* assay for clinical usage, we first searched the circadian transcriptome of blood monocytes for biomarkers using machine learning approaches. Next, we migrated the biomarkers to a clinically relevant gene expression-profiling platform and finally validated our assay using an independent study. Our BodyTime assay uses a small set of blood-based transcript biomarkers to compute internal time with an accuracy equalling the current gold standard method at a smaller monetary and time cost. Thus, the BodyTime assay is a precise new diagnostic tool allowing personalized therapeutic intervention adapted to the patient's endogenous circadian phase. Such a tool has the potential to foster further development of chronomedicine on a much larger scale.

Results

Strategy for BodyTime assay development

The goal of the present study was to develop an objective and simple assay to determine internal circadian time in humans for both clinical and research use (BodyTime assay). Specifically, we aimed to accurately quantify the phase of entrainment (also called chronotype) of humans using multiplex gene expression profiling. To establish a *validated* test, we followed a three-stage biomarker development strategy ([Figure 1A](#)) (23): (i) unbiased discovery of biomarkers (i.e., time-telling genes) using a large-content platform (RNA-Seq). Time-telling genes are likely to be identified among those genes, whose expression is robustly time-of-day dependent across many individuals with similar phase, amplitude and expression level; (ii) migration to a targeted gene expression profiling platform (RNA-Seq → NanoString™); and (iii) independent external biomarker/assay validation.

To this end, we conducted two independent studies with healthy volunteers: the BOTI study ([Figure 1B](#)) to identify the time-telling genes (stage 1+2) and the VALI study ([Figure 1C](#)) to test whether the final assay performs well on a clinically relevant platform with an independent subject cohort (stage 3). The design of these studies will be outlined in the respective result sections. To assess the performance of the BodyTime assay, we compared it to the current gold standard for internal circadian time, the measurement of DLMO.

We chose to use peripheral blood monocytes as source material for gene expression profiling, because (i) blood is an easily accessible source of human cells and (ii) monocytes comprise a homogenous blood cell population and have been shown to possess a high-amplitude circadian clock (24, 25) in contrast to other peripheral blood mononuclear cells (PBMCs), such as B or T cells. For the final multiplex gene expression profiling, we chose the NanoString

Technologies nCounter platform, since it offers key advantages (sensitivity, reproducibility, technical robustness, etc.) over more traditional methods such as microarrays and quantitative RT-PCR (26). Moreover, NanoString-based diagnostic tests with Food and Drug Administration (FDA) clearance are already on the market (27).

Stage 1: Extraction of biomarkers for internal time from human monocyte transcriptome time series data

The goal of stage 1 was to extract a candidate set of time-telling genes from whole monocyte transcriptomic time series data from multiple individuals. That is, we sought a function that maps gene expression signatures to time. To this end, we conducted the BOTI study under controlled laboratory conditions using a narrow cohort design (12 exclusively male subjects, mean age = 25.3 ± 2.6 y (\pm SD), range [22-30 y]; mean DLMO = $21:17 \pm 1:09$, range [19:13-22:36]) ([Figure 1B](#), [Supplemental Table 1](#)). For each subject, 14 blood samples were taken at regular intervals of 3 hours over a period of 40 hours in a constant routine protocol (28) to minimize unwanted effects of sleep, activity or meals on circadian gene expression. Subjects remained in a semi-recumbent posture in bed under dim light, constant temperature and humidity during a period of 40 hours of sleep deprivation. They received isocaloric snacks every hour and water. Hourly saliva samples were taken for determination of melatonin secretion profiles. Monocytes were sorted from whole blood and resulting RNA was subjected to RNA-Seq. In addition to the external time of day, each sample was assigned an additional time stamp, which relates to the subject's DLMO (internal time). After quality assessment, the final RNA-Seq time series included 136 mRNA abundance profiles (9115 genes) from 10 subjects ([Supplemental Table 2](#), [Supplemental Figure 1](#)).

Among the various bioinformatics methods proposed to obtain predictors that map gene signatures to time, we applied ZeitZeiger (29) to the RNA-Seq data set, because ZeitZeiger achieves good prediction performance with fewer genes compared to other methods. We devised a 4-predictors approach, i.e., we tested four types of predictors that differ with respect to the predicted variable (external time or internal time) and the format of the RNA-Seq data input (1-sample or 2-samples 6 hours apart). The difference between the two formats is the mRNA abundance profile assigned to each measurement (M_i) in the time series (1-sample: single profile recorded at M_i ; 2-sample: ratio of two profiles recorded 6 h apart, M_i/M_{i+2}). The idea of the 4-predictor approach is that genes with high and robust time-telling properties should be less dependent on the type of predictor and thus should be frequently extracted by ZeitZeiger.

To evaluate the performance of the predictors, we followed a leave-one-subject-out cross-validation approach. To this end, the predictors were trained with data from all subjects except one, and internal/external times of the samples from this left-out subject were subsequently predicted. This was repeated for all subjects. Moreover, cross-validation was always done for nine combinations of ZeitZeiger's two main parameters *sumabsv* and *nSPC*. Briefly, *sumabsv* controls how many genes form each sparse principal components (SPC) and *nSPC* determines how many SPC are used for prediction, i.e. the higher *sumabsv* or *nSPC*, the more genes are needed for prediction. All four types of predictors performed comparably ([Figure 2A](#), [Table 1](#)) in terms of optimal parameter combination ($nSPC=2$, $sumabsv=\{2, 3\}$) and mean number of genes used for prediction (12 to 15 genes for $sumabsv=2$, 30 to 35 genes for $sumabsv=3$). As a measure of accuracy, we use the median absolute difference between the predicted and the observed (internal or external time) time stamps and its interquartile range

(IQR). Hereafter, for simplicity, we abbreviate median absolute difference to MdAE. The accuracy achieved in predicting internal time is similar for the 1-sample (MdAE=1.6 h, IQR=2.4-3.2 h) and the 2-sample method (MdAE=1.4-1.7 h, IQR=1.9 h) ([Figure 2A](#), [Table 1](#)); differences between the two methods are not statistically significant (Benjamini-Hochberg adjusted p-value of pairwise Wilcoxon test > 0.05). With 53.7-59.6% of the predictions showing an error of ≤ 2 h, our predictors' performances are comparable to those of previously published internal cross-validation predictors (21, 22). The MdAEs show no significant variation over the entire constant routine (Kruskal-Wallis test on 3 h time bins, p-value > 0.05) for any of the predictors, indicating that the cumulative sleep deprivation experienced by the subjects does not affect prediction accuracy. Likewise, there is no statistically significant difference in terms of MdAE between samples obtained during day 1 [0-24 h] and day 2 [24-40 h] of the constant routine (Mann-Whitney U test, p-value > 0.05). The accuracies of the external time of day predictors (MdAE=1.2-1.6 h, IQR=1.8-2.4 h; [Figure 2A](#), [Table 1](#)) are similar to those of the internal time predictors. Likewise, the 1-sample (MdAE=1.4-1.6 h, IQR=1.8-2.0 h) and 2-sample methods (MdAE=1.2-1.4 h, IQR=2.3-2.4 h) perform comparably. The global gene sets of all predictors are shown in [Figure 2B](#). The global gene set of a predictor aggregates all genes identified by ZeitZeiger for prediction (biomarkers) across the internal cross-validation runs. For reasons of comprehensibility, the composition of the global gene sets will be specified in the context of migration to the NanoString platform (stage 2).

Together, our results indicate that monocyte transcriptome time series data are well suited to extract time-telling genes with internal cross-validation performance similar to previous studies (21, 22). However, the MdAEs as well as the frequencies of predictions with an error ≥ 1 h

indicate that the accuracy of predictions can still be improved, since for internal time it is below the accuracy established by the gold standard saliva melatonin radioimmunoassay that was used to determine DLMO in our study cohort (30 minutes to 1 hour (16, 17)).

Stage 2: Platform migration – selection of a candidate biomarker set for internal time

Following the biomarker extraction process and internal validation, the next stage aimed to adapt candidate biomarkers (time-telling genes) to a clinically applicable assay platform ([Figure 1A](#)). It is crucial which and how many time-telling genes are selected for migration to the NanoString platform. Therefore, we predefined the following selection criteria: (i) the final number of genes should be as small as possible, and (ii) the genes selected for migration should have robust time-telling properties. Our selection of a candidate set of time-telling genes is based on the global gene sets of the best-performing predictors ([Table 1](#), [Figure 2B](#)). The global gene set of a predictor aggregates the genes extracted by ZeitZeiger for prediction across the internal cross-validation runs. In case of leave-one-subject-out cross-validation, as performed here, the number of cross-validation runs equals the number of subjects ($N=10$). Since our predictors use two sparse principal components for prediction, the maximal times a gene can be identified is $N \times nSPC=20$. [Figure 2B](#) summarizes the global gene sets of the best-performing predictors in terms of which genes were identified and how often. A total of 119 genes were extracted at least once across all predictors. Gene ontology (GO) functional enrichment analysis revealed that they are significantly associated ($p\text{-value} < 10^{-5}$) with biological processes related to the immune system (e.g. immune response, defense response, cell activation; for a full list see [Supplemental Table 3](#)). Furthermore, four genes have previously been related to the circadian clock (*DBP*, *NR1D2*, *PER1* and *PER2*) (1).

Out of the 119 genes, 34 were selected as candidates for migration to the NanoString platform because they were frequently identified during cross-validation of the individual predictors and across predictors: *ABHD5*, *AGFG1*, *C7orf50*, *CD99*, *CLEC4E*, *CRISPLD2*, *CX3CR1*, *CYP51A1*, *DBP*, *ELMO2*, *FASN*, *FKBP4*, *FKBP5*, *FUS*, *HNRNPDL*, *HSPA1A*, *HSPH1*, *IRAK3*, *IRS2*, *LGALS3*, *LILRA5*, *MLKL*, *NID1*, *NR1D2*, *PER1*, *PER2*, *PHC2*, *RBM3*, *RSRP1*, *SERPINB9*, *SMAP2*, *TSC22D3*, *TSPAN4* and *UBE2J1*. Due to the size of the candidate set, we opted for a 48-plex configuration for the NanoString assay. In addition to the 34 candidate genes we chose to further include 4 housekeeping genes (*GAPDH*, *HPRT1*, *PPIA*, *PSMB2*), 3 clock (or clock associated) genes that were not part of the RNA-Seq data set because of low expression (*KLF9*, *NR1D1*, *PER3*), 2 clock genes that were not identified in the biomarker extraction process (*CRY1*, *CRY2*) as well as 5 genes that showed high frequencies of detection when the RNA-Seq data set was still incomplete (*CPED1*, *DHRS9*, *HGSNAT*, *ODC1*, *PLAC-8*).

To assess the impact of migration of our candidate set to the NanoString platform on prediction accuracy, we performed platform comparison. To this end, gene expression profiles using the 48-plex NanoString gene set were acquired for all blood monocyte RNA-preparations obtained during the BOTI study ([Supplemental Table 4](#)). Afterwards, internal cross-validation predictors for both the RNA-Seq and the NanoString data sets were built only using the genes shared by both assays (n=41) and all samples that passed quality control for both assays (n=136). We again followed the 4-predictor leave-one-subject-out approach; predictor performances are shown in [Figure 2C](#), predictor performance measures are summarized in [Supplemental Table 5](#). Most strikingly, all predictors' performances significantly increase after migration to the NanoString platform (internal time 1-sample: $p < 0.0008$, internal time 2-sam-

ple: $p < 0.005$, external time 1-sample: $p < 0.0001$, external time 2-sample: $p < 0.03$; Benjamini-Hochberg adjusted p -value of pairwise Wilcoxon test). The MdAEs improved by about 1 hour ranging between 0.6 and 0.9 hours for the different predictors. Moreover, the spread of MdAEs narrowed by about a factor of 2, now reaching values in the range of 1 hour. Consequently, the frequencies of predictions with an error ≤ 1 h or ≤ 2 h increased up to $>50\%$ and $>70\%$, respectively. Of particular note is that the NanoString predictors performed equally well for different values of sumabsv; that is, a predictor using just 2 genes for prediction achieved the same accuracy as a predictor using ≥ 12 genes. Spearman's correlation and Bland-Altman analyses further revealed that, in terms of prediction error, there was no relevant bias between the two platforms ($\rho \leq 0.33$, [Supplemental Figure 2](#); Bland-Altman mean difference [-0.2 to 0.5 h], [Supplemental Figure 3](#)). Taken together, the migration of our candidate set to the NanoString platform was not only successful, but in fact significantly improved its performance.

After migration of the candidate set of time-telling genes to the NanoString platform, we sought to establish and validate a final assay to assess internal circadian time. By means of internal cross-validation (leave-one-subject-out approach), we first identified the optimal parameter values for ZeitZeiger-based prediction of internal time in the NanoString data set of the BOTI study. This analysis differed slightly from the one performed for platform comparison, in that here all genes ($m=44$) and all samples that passed quality control were considered ($n=154$ in 11 subjects) and not only those that are also present in the RNA-Seq data set. Regarding accuracy and optimal parameters ($nSPC=2$, $\text{sumabsv}=\{1, 2\}$) the results of the final 1-sample and 2-sample assays' internal validation were essentially identical to those described

above for platform comparison (for a detailed view on performance measures and a description of the global gene sets see [Table 1](#) and [Supplemental Figure 4](#), respectively).

Using the identified optimal parameter combinations, we next trained two final internal time predictors on all samples in the 1-sample and 2-sample NanoString data set of the BOTI study ([Figure 3A](#)). Both the 1-sample and the 2-sample predictor trained with $\text{sumabsv}=1$ are formed by just two genes (*NR1D2*, *PER2*). The predictors trained with $\text{sumabsv}=2$ comprise 12 genes (SPC1: *NR1D2*, *PER3*, *NR1D1*, *LGALS3*, *PER2*, *ELMO2*, *FKBP4*, *HSPH1*, *CRY1*; SPC2: *CRY1*, *PER2*, *CRISPLD2*, *KLF9*, *PER1*) and 13 different genes (SPC1: *NR1D2*, *PER3*, *NR1D1*, *LGALS3*, *TSPAN4*, *FKBP4*, *ELMO2*, *CRY1*; SPC2: *CRY1*, *PER2*, *CRISPLD2*, *CPED1*, *CX3CR1*, *KLF9*, *ELMO2*, *PER3*), respectively. More importantly, the 1-sample and 2-sample predictors show a strong overlap in terms of genes that form SPC1 and SPC2, emphasizing the high time-telling capacity of these very small sets of genes. In line with this, the expression levels of the identified genes show consistent circadian oscillations in each subject of the BOTI study ([Figure 3C](#)). Interestingly, the graphical illustration of the course of SPC1 and SPC2 over internal time resembles a clock (12-gene 1-sample predictor, [Figure 3B](#); for the other predictors see [Supplemental Figure 5B-D](#)). When plotted in the two-dimensional SPC-space, the BOTI study's samples describe a virtually perfect circle with the progression of internal time following an anti-clockwise trajectory. Such behavior is observed for each individual subject ([Supplemental Figure 5A](#)) and might form the basis for future personalized approaches to detect perturbations of the circadian clock in humans. Taken together, we established not one but four final BodyTime predictors that all show comparably high accuracy and use a very small set of genes.

Stage 3: External validation of the final BodyTime assay in an independent study

Predictors often perform better on data they were built on than on independent samples (30). Therefore, it is essential to validate them externally before implementation for clinical or research use. We thus sought to validate the final BodyTime predictors in an independent study (VALI study). In contrast to the BOTI study, the VALI study used a broad cohort design (11 male + 17 female subjects, mean age = 26.9 ± 5.7 y, range [18-41 y]; mean DLMO = $21:04 \pm 2:08$, range [16:42-00:28]) (Figure 1C, Supplemental Table 6). In addition, in contrast to the BOTI study, where we chose a controlled laboratory setting (constant routine), now we decided on a setting better reflecting real life conditions, i.e., subjects of the VALI study were allowed to sleep, to eat meals and to be exposed to light at their habitual times. Most importantly, however, all subjects were classified as extreme or moderate early or late chronotypes (based on questionnaires; see Materials and Methods) prior to inclusion in the study to characterize the prediction range of the BodyTime assay with respect to chronotype.

For each subject, two blood samples were taken (in the morning and 6 hours later in the afternoon), monocytes were sorted and mRNA abundance profiles against the 48-plex NanoString gene set were acquired (Supplemental Table 4). To assess and compare the prediction of internal time by the four BodyTime predictors trained on the BOTI study data set, we applied them to the mRNA abundance profiles acquired during the independent VALI study (Figure 1C) (note that external time prediction is not meaningful for extreme chronotypes since their individual DLMOs are spread over ~9 hours, Supplemental Table 6). The 1-sample 2-gene and 12-gene BodyTime predictors applied to the VALI study morning samples achieved the best prediction accuracy of internal time (Figure 4A, Table 2). With MdAEs of 0.54 h (IQR=0.82 h) or 0.69 h (IQR=0.87 h) and 100% or 96.3% of samples showing an error of ≤ 2 h,

both predictors performed as well as they can, considering that the error of the gold-standard reference method (DLMO determined from saliva melatonin concentrations measured by radioimmunoassay, RIA) itself lies between 0.5 and 1 h (16, 17). The agreement of our BodyTime predictors with the current gold-standard is further emphasized by the high (circular Pearson $r \geq 0.9$) and significant ($p < 0.0001$) correlation of DLMO estimated by our predictors with DLMO determined from saliva melatonin concentrations (Figure 4B). Moreover, Bland-Altman analyses showed that there is no systematic difference between the two methods (Bland-Altman mean difference [-1.02 to 0.24h]; Figure 4C and Supplemental Figure 6). Application of the 1-sample BodyTime predictors to the afternoon samples resulted in a small but statistically insignificant loss of accuracy in terms of MdAE (2-gene: 0.99 h, 12-gene: 0.80 h). Likewise, the accuracies of the two 2-sample predictors (2-gene: 0.75 h, 13-gene: 0.74 h) were somewhat better than those of the 1-sample predictors with the difference not being statistically significant. Furthermore, the accuracy of prediction does not depend on the phase of entrainment (Supplemental Figure 7).

Taken together, we succeeded in establishing the first externally validated assay that estimates internal circadian time from a single sample. Hallmarks of this BodyTime assay are its high accuracy, its robustness and low complexity in that it requires expression profiling of just a handful of genes. Most importantly, it provides a much more convenient alternative to the current gold-standard multi-sample methods.

Discussion

Following a three-stage biomarker development strategy, we established and validated a novel assay (BodyTime) for assessing internal circadian time using monocyte NanoString-based gene expression profiles. Our BodyTime assay achieves similar accuracy (MdAE: 0.54-0.69 h) as the current gold standard DLMO assay (error: 0.5-1 h (16, 17)) while eliminating its shortcomings. It requires only one blood sample taken at any time during the day and there is no need for a dim light environment during sampling. Moreover, it depends on just a handful of genes (≤ 12), is of low complexity and, thus low cost (<100\$ per test). In its current form, our assay is readily useable in a research or clinical context, since the requirements regarding equipment (MACS sorting device) and staff are easily met. If not available in-house, NanoString gene expression analysis can be out-sourced to one of many external service providers. In [Supplemental Table 7](#), we provide an Excel-based tool, where users can paste their expression values from NanoString to get an estimate of their DLMO based on our 12-gene 1-sample BodyTime predictor.

What distinguishes our approach from all previous attempts (21, 22) to establish an assay for internal time is that we focused on biomarker development strategy and decision-making instead of bioinformatics tool development. While bioinformatics is certainly crucial for biomarker discovery, our approach demonstrates that, on its own, it is not sufficient. In fact, the success of our BodyTime predictors can be attributed in large part to the decision to migrate the assay to the NanoString platform. Just the migration increased the accuracy of our predictors significantly. We used ZeitZeiger to identify the time-telling genes for use in our multiplex assay for internal time. ZeitZeiger has the advantage that it performs both model construction for internal time estimation and feature extraction to find the best multiplex for

use in the assay. Other established methods (molecular time table (19) or partial least squares (22) use theoretically sub-optimal approaches to find the best combination of time-telling genes. We used the maximum likelihood scheme (described in (29)) to estimate internal time from a subject sample. However, other machine learning methods (LASSO and partial least squares) resulted in very similar internal time estimation performances ([Supplemental Figure 8, Supplemental Table 8](#)), further emphasizing that biomarker discovery and the analysis platform (NanoString) rather than a bioinformatics approach had a greater influence on the success of our approach.

Our choice of monocytes as a source material was driven by a desire to reduce the cellular noise in the data, at the cost of a slightly more expensive and complex assay. In contrast to whole PBMCs or other PBMC subsets, monocytes have been shown to comprise a homogenous blood cell population with a high-amplitude circadian clock (24, 25). Whether this decision significantly contributes to our success in establishing the BodyTime assay is difficult to assess, because all previous attempts (while being PBMC-based) did not go beyond stage 1 of the biomarker development pipeline (21, 22). That is, direct comparison cannot be made. However, some observations during initial biomarker extraction suggest that the choice of monocytes had a favorable impact on the performance of the assay: (i) independent of the predicted variable (internal or external time) and the data input format (1-sample or 2-sample), we observed a strong overlap in the genes extracted by ZeitZeiger ([Figure 3A](#)), (ii) compared to other PBMC-based internal-cross validation approaches with similar performance our predictors need a much smaller set of genes (12-15 versus ~100) (22). We believe that these observations reflect a combination of reduced cellular noise of monocytes in terms of gene expression compared to PBMCs and an improved clinically proven gene expression

measurement platform (NanoString) leaving the possibility that our final assay would perform just as well on PBMCs.

The accuracy of the BodyTime assay is the same for all chronotypes ([Supplemental Figure 7](#)), even the extreme ones as revealed in our external validation study. It is thus not affected by where the sleep period of a person is located during the 24-hour window of a day as long as sleep occurs at the person's normal time (i.e. similar phase angle with respect to the melatonin rhythm and assuming no internal desynchronization). Archer et al. (31) previously showed that when sleep was scheduled out of circadian phase (i.e. out of phase with the melatonin secretion rhythm) the blood transcriptome was affected such that the expression of circadian genes may become arrhythmic or low-amplitude. That is, a predictor including such genes may fail for individuals sleeping out of phase such as shift workers, with or without internal desynchronization. However, when using the information provided by Archer et al. and comparing it with our BodyTime predictors, the majority of genes were unaffected when sleeping out of phase (31). Moreover, the accuracy of our internal cross-validation predictors was not affected by the cumulative sleep loss experienced by the subjects enrolled in the BOTI study. We therefore assume that the BodyTime assay should be able to reliably assess internal time even in the case of circadian rhythm disorders or circadian misalignment that may occur during shift work. Whether BodyTime works similarly well in patients or cohorts with known lower circadian amplitudes (e.g. the elderly, shift workers) and/or in the presence of internal circadian desynchronization remains to be elucidated. It is important to note that neither BodyTime nor DLMO determined from saliva melatonin concentrations report the circadian phase of the SCN; rather BodyTime estimates DLMO, and the classical melatonin RIA directly measures the time of onset of melatonin secretion. Onset of melatonin

secretion is a characteristic of circadian rhythms in the pineal gland, although in clinical circadian and sleep research it serves as the gold standard proxy for SCN phase.

Among the BodyTime predictors were several core clock genes or genes associated with the circadian clock, which is in contrast to biomarker sets previously suggested based on analysis of data acquired on high-content discovery platforms such as microarrays (21, 22). Since the BodyTime predictors are small in size (2 to 15 genes) we cannot deduce any further biological meaning. However, although they did not make it into the final BodyTime predictors, we identified many time-telling candidate genes that are associated with biological processes related to the immune system. This is in line with the previously suggested biomarker sets for internal time and hints at modulation of immune processes by the circadian clock (32).

Our assay provides a simple yet effective tool for chronotyping individuals from a single blood sample. This assay should therefore become a useful tool for example during drug development to assess whether the effectiveness and side effects of a drug are influenced by the administration schedule. Beyond that, it opens up the opportunity to investigate the dynamics of the internal circadian phase in response to environmental changes and interventions (in large study cohorts), e.g. shift work, jet lag, season (photoperiod), light level, daylight saving time as well as with age. In addition, the BodyTime predictor genes may have the diagnostic potential to assess molecular perturbations of the circadian system. When plotted in the SPC-space defined by the BodyTime predictor genes, the time series data of the BOTI study describe a circle with the progression of internal time following an anti-clockwise trajectory (**Figure 3B**). Hughey et al. have previously reported a similar behavior for a predictor of external time of day in mice (29). Importantly, they were able to show that genetic perturbations of the clock result in characteristic changes in relation to the circular trajectory, such as axis

shifts (muscle *Bmal1*^{-/-}) and shrinking of the radius (liver *Nr1d1*^{-/-} *Nr1d2*^{-/-}). If this is also true for humans, the circular trajectory of our BodyTime predictors may provide the basis for the establishment of diagnostic tests.

In summary, our BodyTime assay is a new precision medicine tool that allows the personalization of diagnostics and therapy according to an individual's circadian phase – an under-recognized yet important physiological parameter. BodyTime is simple (it requires only a single blood sample taken anytime during the day) and highly accurate (as good as the current gold standard) and therefore should foster the spread of chronomedicine.

Materials and Methods

Study 1 (BOTI) – Study design, protocol and participants

Study Design: The 4-day laboratory study was conducted between May 2015 and January 2016 and consisted of an adaptation and a baseline night in the sleep laboratory, followed by a 40-h episode of sleep deprivation and an 8-h recovery sleep episode. The entire protocol was carried out under constant routine (CR) conditions (<6 lx, constant room temperature, semi-recumbent posture in bed, regularly small isocaloric snacks and water, and no time cues (28)). Continuous polysomnographic recordings and core body temperature measurements started before the first baseline night. During the CR part, salivary samples for hormone analyses were collected hourly, and blood samples via indwelling catheter were obtained every three hours.

Study Protocol: Participants had to keep a regular sleep wake cycle 7 days before the laboratory part of the study, with self-selected target bed and wake times (± 30 min), and an approximate 8-h sleep episode. Compliance was verified by activity watches (Motion Watch 8, Camntech, Cambridge, UK) and sleep diaries. On the laboratory admission day, participants had to abstain from caffeine and alcohol after 2 pm. They came to the sleep laboratory on the evening of day 1. After completion of a urinary drug screen (möLab GmbH, Langenfeld, Germany), participants were prepared for the polysomnographically recorded adaptation night in the laboratory. Habitual sleep and wake times were determined by centering an 8-hour sleep episode to the averaged times of mid-sleep obtained at home, during the 7 days preceding the study. On day 2, participants stayed in their room (illuminance ~ 500 lx in a vertical direction). In the evening of day 2, i.e. 6 h before habitual bedtime, participants remained in dim light (<6 lx). Salivary samples were obtained for hormonal analyses every hour. Participants were then again prepared for polysomnographic recordings for the baseline night. After wake

time on day 3 (in dim light), the CR protocol in bed and in dim light began. An indwelling catheter was inserted in a peripheral vein of the left or right forearm. An isotonic electrolyte infusion (1000 ml Ringer Lactate / 24 h), with 10'000 IE Heparin / 24 h was continuously applied via an automatic infusion pump system. The following 40 hours, participants stayed awake in a semi-recumbent position in bed. They produced a salivary sample every hour, and every 3 hours, a blood sample (8 ml each) was drawn via indwelling catheter by a trained assistant. For this purpose, the indwelling catheter was flushed with 10 ml saline solution (0.9% NaCl) and the first 5 ml of the first drawn blood/saline mix were voided. During the entire CR protocol, an assistant was present and constant wakefulness and compliance with the protocol was verified. During the CR, participants were allowed to read (no light emitting devices, no cell phones), play an instrument or to engage in conversation with the assistant. Wake EEG and performance data obtained during the CR will be reported elsewhere. After the 40 hours of extended wakefulness, the 8 h recovery sleep episode started and the CR protocol ended on the next morning (day 5) after wake time. Blood platelet concentrations were regularly controlled (at least 3 times, according to local regulations) in order to prevent a heparin-induced thrombocytopenia (HIT). Before, during and after the study, venous hemoglobin concentrations were measured in order to monitor changes in blood volume concentrations.

Participants: Twelve healthy men (mean age 25.3 ± 2.6 yrs; range: 22-30 yrs; [Supplemental Table 1](#)) without any medical, psychiatric or sleep disorder were included in the study. Before their first visit, participants completed five questionnaires: entrance questionnaire, the Munich Chronotype Questionnaire (MCTQ; MSF_sc=corrected for sleep duration on free days), Horne-Ostberg Morning Eveningness Questionnaire (HO), Pittsburgh Sleep Quality Index

(PSQI), Seasonal Pattern Assessment Questionnaire (SPAQ). The mean scores, standard deviations (SD) and ranges are shown in [Supplemental Table 1](#). Participants also underwent a physical examination, completed the Ishihara color plates for normal color vision, and a polysomnographically recorded adaptation night in the sleep laboratory. All participants were healthy, non-smokers, had no recent history of drug abuse and were not extreme morning or evening chronotypes. The questionnaires had to be within a normal range (as reported in the literature) for each participant. Exclusion criteria for the study were travels across more than one time zone within the last three months and/or shift work during the last eight weeks before the study.

Study 2 (VALI) – Study design, protocol and participants

Study Design and Protocol: The validation study with extreme morning and evening types was conducted between February and April 2017 and consisted of three ambulatory visits on the same day. During the first visit, a venous blood sample (15 ml) was taken from a peripheral arm vein at the laboratory for Medical Immunology at Charité Universitätsmedizin Berlin (Germany). The blood sample was drawn approximately two hours after habitual wake time and was immediately processed. The participants then left the laboratory and returned after 6 hours for the second blood sample (15 ml). Finally, the participants came to the sleep laboratory 6 hours prior to their habitual bed time for assessment of circadian phase by means of DLMO. For this purpose, participants remained in constant sitting position in dim light (<6 lux) for six hours and provided a salivary sample every 30 min. They received small snacks and water and were allowed to read or to engage in conversation with other participants and the assistant. Twenty minutes before each salivary sample, participants were instructed to stop

drinking/eating and to rinse their mouth with water. After the last sample, participants left the laboratory. As already in the first study, participants had to keep a regular sleep wake cycle 7 days before the study day, with self-selected target bed and wake times, and an approximate 8-h sleep episode. Compliance was verified by activity watches (Motion Watch 8, Camntech, Cambridge, UK) and sleep diaries. The procedures for salivary samples were the same as in the first study, except that the sampling interval was 30 min for the validation study.

Participants: Extreme morning and evening types ('larks' and 'owls') were recruited via flyers at schools and universities in the area of Berlin and Potsdam (Germany). Out of 172 returned questionnaires (MCTQ, HO, PSQI, SPAQ, entrance questionnaire, see first study for abbreviations), only participants who met the initial criteria for morning or evening types, based on MCTQ and the HO scores, were invited for the screening visit. They had to have an MCTQ (MSF-sc; sleep duration corrected on free days) score below 3 (= extreme morning type), or higher than 6 (extreme evening type), and to be at least a moderate morning (59 - 69) or moderate evening type (31 - 41) in the HO questionnaire. Or conversely, participants had to be an extreme morning (>69) or extreme evening type (<31) based on the HO score, and at least a moderate chronotype in the MCTQ score (i.e. <4 for morning types; or >5 for evening types). We also accepted two moderate morning types with a MCTQ between 3 and 4 and a HO score between 59 and 69 as study participants. Two participants were extreme morning types only in either the HO (score=77) or the MCTQ (score=6.47). Exclusion criteria were medical or psychiatric disorders, recent drug abuse, PSQI scores <10, recent shift work and travels across more than one time zone within the last two months. A total of 14 morning (12 extreme and 2 moderate) and 14 evening types ([Supplemental Table 6](#)) completed the study. A sample

size of 28 was targeted based on the power calculation for a power of 0.8 with an alpha level of 0.05 and a large effect size of 0.5.

Melatonin and cortisol measurement and DLMO determination

Salivary samples were obtained with salivettes (Salivette®, Sarstedt AG & Co, Nümbrecht, Germany) for melatonin (study 1 and study 2) and cortisol (study 1) assays. Individual secretion profiles of both hormones during the CR (study 1) are shown in [Supplemental Figure 9](#). Upon collection, each salivary sample was frozen at -20° C. All samples were sent for radioimmunoassay (RIA) to an external laboratory after study completion (study 1: IBL International GmbH, Hamburg, Germany; study 2: Chrono@work, Groningen, The Netherlands). To assess circadian phase, DLMO was calculated by using melatonin concentrations on the first evening of the CR (study 1). Two different methods for determination of DLMO were applied (33): The two-standard deviation (2-SD) method (for study 1) and the threshold method (for study 2). For the 2-SD method, DLMO was defined as the time when melatonin concentrations exceeded two standard deviations (2 SD) of three low daytime concentrations. The threshold method defined DLMO as the time when melatonin concentrations exceeded 10 pg/ml (study 1) or 3 pg/ml (study 2; due to higher sensitivity of the antibody used for the RIA (Bühlmann Laboratories, Schönenbuch, Switzerland)). For both methods, the software 'HOCKEYSTICK' developed by Danilenko et al. was used (16). Both methods led to similar timing for DLMO. By visual inspection of the melatonin profiles of study 2, some melatonin concentrations in between two samples were very high and considered as 'outliers', which might have happened due to remaining small food particles in between two samples. These high values were linearly interpolated prior to DLMO assessment, which was done for a total of 14 values out of 336 (4.17%).

For the same reason, four measurements (at the beginning of the study) were omitted (=1.20%). Intra- and inter-assay coefficients of variability (CV) are given in [Supplemental Table 9](#).

Blood collection, monocyte sorting and RNA preparation

Eight ml of EDTA whole blood taken every 3 hours in the BOTI study and twice (6 hours apart) in the VALI study were immediately processed. CD14⁺ blood monocytes were collected by MACS sort using whole blood CD14-microbeads (Miltenyi Biotec, Bergisch Gladbach, Germany) and the Auto-MACS-Pro device. All steps were performed at 4 °C according to the manufacturer's instructions. Median purity of monocyte preparations (BOTI study) was 89% as revealed by analytical FACS sorting (CD11b⁺/CD15⁻ fraction; anti-CD11b: #558123 (BD Biosciences); anti-CD15: #560828 (BD Biosciences)). The CD14⁺ cell fraction was pelleted by centrifugation and frozen at -80° C. After completion of the entire time series, total RNA was isolated using TRIzol reagent (Thermo Fisher Scientific). Quality and quantity of isolated RNA was analysed using the NanoDrop 2000c (Thermo Fisher Scientific) and the Qubit RNA BR Assay Kit (Thermo Fisher Scientific).

RNA libraries preparation

Total RNA was treated with DNase I (NEB) following the manufacturer's protocol. Stranded, ligation-based, digital gene expression RNA libraries preparation was modified from Shishkin et al. (34) as follows: 400 ng of total RNA was fragmented in FastAP buffer (Thermo Scientific) for 3 min at 94 °C, dephosphorylated with FastAP, cleaned (using SPRI beads, Agencourt) and then ligated to a linker1 (5Phos/AXXXXXXXXXAGATCGGAAGAGCGTCGTGTAG/3ddC/, XXXXXXXX

is an internal barcode specific for each sample), using T4 RNA ligase I (NEB). Ligated RNA was cleaned, and 16 samples of each subject were pooled together into a single tube using RNA Clean & Concentrator columns (Zymo Research). The pooled RNA was then PolyA selected (using Oligo(dT) beads, Invitrogen) according to the manufacturer's protocol. RT was performed for the pooled, PolyA⁺ samples, with a specific primer (5'-CCTACACGACGCTCTTCC-3') using AffinityScript Multiple Temperature cDNA Synthesis Kit (Agilent Technologies). Then, RNA-DNA hybrids were degraded by incubating the RT mixture with 10% 1 M NaOH at 70 °C for 12 minutes. PH was then normalized by addition of corresponding amount of 0.5 M AcOH. The reaction mixture was cleaned up using Silane beads (Dynabeads MyOne, Life Technologies) and a second ligation was performed, where the 3'-end of the cDNA was ligated to linker2 (5Phos/AGATCGGAAGAGCACACGTCTG/3ddC/) using T4 RNA ligase I. The sequences of linker1 and linker2 are partially complementary to the standard Illumina read1 and read2 barcode adapters, respectively. Reaction Mixture was cleaned up (Silane beads) and PCR enrichment was set up using enrichment primers 1 and 2 (5'-AATGATACGGCGACCACCGAGATCTACAC-TCTTTCCCTACACGACGCTCTTCCGATCT-3', 5'-CAAGCAGAAGACGGCATACGAGATXXXXXXXGTGACTGGAGTTCAGAC).

3'-end RNA-Seq screen

The libraries were 3'-end sequenced (35) using Illumina NextSeq 500 and the results obtained in fastq format. After quality control using RSeqQC (36), technical replicates for the same sample were combined. 3'-end reads were aligned to the human genome (hg19) using STAR (37) with the following settings: --outFilterMultimapNmax 1 --clip3pNbases N (where N was chosen between 0-8 if there was a loss of quality at the end of reads), and saved as .bam files.

Expression counts of high-quality reads for each gene were then extracted from the .bam files using the End Sequence Analysis tool (ESAT) (version 1) (38) with the following command: `java -jar -Xmx20g esat.v1.jar -annotations (hg19 Refseq annotation) -wExt 2000 -quality 20`. We retained only genes with at least 2.5 counts per million in at least half the number of samples of each subject. The resulting count table was normalized for library size and composition using the trimmed mean of M-values (default method in the edgeR package (39)) and log2 transformed using the *cpm* function in edgeR to obtain the whole transcriptome RNA-seq time series data (in log2 counts per million). Raw data have been deposited in the SRA archive (SRP133635). The alignment statistics of the RNA-seq are provided in [Supplemental Table 10](#).

Rhythmicity analysis

Rhythmicity analysis was performed ([Supplemental Figure 1](#)) on the raw count data obtained from the ESAT tool (see section on 3'end RNA-seq screen). The count data was analysed using the limma-voom R package that accounts for the dependence of noise in the read counts on the mean gene expression. We assess rhythmicity by fitting cosine curves with a 24 h period with respect to external time to the count data. After FDR correction using Benjamini-Hochberg, genes were called circadian if their adjusted p-value was below 0.05. This analysis was repeated for each subject independently.

NanoString 48-plex data acquisition

A 48-plex NanoString panel was designed comprising 44 candidate time-telling genes and four control housekeeping genes (*GAPDH*, *HPRT1*, *PPIA*, *PSMB2*). The custom-designed probes included a 3'-end biotinylated capture probe and a 5'-fluorescence-barcoded reporter probe for

each gene target ([Supplemental Table 11](#)). Hybridization of the probes and 250 ng monocyte RNA was carried out according to the manufacturer's instructions. Raw expression data were obtained using a NanoString nCounter Digital Analyzer (NanoString Technologies, Seattle, Washington, USA). Normalization was carried out in three steps according to the bioconductor package NanostringQCPro: (i) normalization by the arithmetic mean of the positive spike-in controls, (ii) subtraction of the mean of the negative controls and (iii) normalization by the geometric mean of the four housekeeping genes. For all further down-stream analyses, data were log2-transformed.

Establishment and evaluation of internal time predictors using ZeitZeiger

To build and evaluate predictors of time based on monocyte transcriptomics data, we applied the supervised learning method ZeitZeiger developed and described by Hughey et al. (29) using the statistics environment R (40). The R-package of ZeitZeiger can be downloaded from <https://github.com/jakejh/zeitzeiger>. ZeitZeiger extracts a time-telling gene set by means of supervised sparse principal component analysis (SPCA). The sparsity of a gene set, i.e. the number of genes it includes, is controlled by the parameter `sumabsv`. The smaller the value of `sumabsv`, the higher the sparsity, i.e., the fewer genes. To predict the time stamp of a test observation, ZeitZeiger applies maximum-likelihood estimation in which the number of genes involved in prediction is controlled by number of sparse principal components (`nSPC`). During both the biomarker extraction and the platform migration process, we trained and evaluated ZeitZeiger predictors based on the BOTI study time series data sets (RNA-Seq or NanoString) following a leave-one-subject-out internal cross-validation strategy. The latter provides a well-

established and convenient solution to assess a predictor's performance within a single dataset. For each subject, a predictor is trained on all the other subjects and subsequently used to predict the time stamps of the left-out subject's samples. To identify the optimal parameters for training of a predictor, internal cross-validation was performed for a range of values of $\text{sumabsv}=\{1, 2, 3\}$ and $\text{nSPC}=\{1, 2, 3\}$. In the external validation process, we trained ZeitZeiger predictors on the complete BOTI NanoString time series data and subsequently used them to predict the time stamps of the samples included in the VALI study. For calculation of prediction errors, we used the `calcTimeDiff` function for periodic variables provided by the ZeitZeiger R package; `calcTimeDiff` makes the error as close to zero as possible (for details, see (29)). To assess and compare the performance of ZeitZeiger predictors, we calculated the median absolute difference (MdAE) between the predicted and the observed time stamps and its interquartile range (IQR). ZeitZeiger predictors were trained for two different formats of data input, referred to as 1-sample and 2-sample format. The difference between the two formats is the mRNA abundance profile assigned to each measurement (M_i) in the time series (1-sample: single profile recorded at M_i ; 2-sample: ratio of two profiles recorded 6 h apart, M_i/M_{i+2}).

Excel-based prediction tool

For platform migration and assay validation using NanoString, we normalized all data (from BOTI and VALI studies) together as previously described. However, a sample-by-sample normalization is necessary to make predictions based on a newly obtained blood samples profiled by NanoString. We developed such a scheme by replacing the first and last steps outlined previously by a combination of two scale factors (computed only from BOTI data) and arithmetic mean of positive spike-in controls (of the new sample) and the geometric mean of the

housekeepers (in the new sample only). We subsequently verified this scheme by confirming that prediction performance on the sample-by-sample normalized VALI data was unchanged ([Supplemental Table 12](#)). Once a new sample is thus normalized, a simple look-up table allows the prediction of the internal time of the sample that we implement as an Excel-based tool ([Supplemental Table 7](#)).

Functional enrichment analysis

Gene ontology analysis of the 119 selected time telling genes (biomarkers) was carried out using the topGO package in R within the biological process (BP) categorization of the genes with $p < 0.01$ and annotated within the *org.Hs.eg.db* database in Bioconductor. We used a custom (monocyte specific) background gene set for the analysis consisting of the 9115 genes identified as expressed across all subjects in our RNA-seq analysis.

Prediction using LASSO and partial least squares regression

Similar to the ZeitZeiger-based predictors, prediction models were constructed using LASSO and partial least squares regression (PLS) in order to test the relative performance of different machine learning algorithms (41). Both approaches found linear predictors (of time in our case) based on the features (genes). The use of either approach required transforming time (the predicted quantity) to a pair of predicted variables ($\cos(2\pi t/24)$, $\sin(2\pi t/24)$), like in (22). The predicted time was finally obtained by inferring time from the two predicted components using the *arctan* function. For the 2-sample assay, we predicted the difference of the log2 normalized data at the two time points (that is the ratio of the data before log2 normalization) as this is more optimal approach with PLS and LASSO. To find the optimal LASSO model, we

used the *glmnet* R package under the “mgaussian” family. Similarly, for the PLS model we used the *p/s* R package with standard settings. Both internal cross-validation using leave-one-subject-out cross-validation of the BOTI NanoString data as well as predicted DLMO for the VALI data were computed by selecting optimal models using cross-validation with the “one-sigma” selection criteria (available in the packages). The analysis thus closely parallels the ZeitZeiger-based analysis of the NanoString data.

Statistics

The subjects included in the BOTI study experienced cumulative sleep deprivation over the sampling period of 40 h. To assess whether the accuracy (MdAE) of ZeitZeiger predictors showed variation across sampling time, a Kruskal-Wallis test on 3 h time bins was performed. In addition, a Mann-Whitney U-test was performed to test for differences between samples obtained during day 1 [0 h-24 h] and day 2 [24 h-40 h] of the sampling period. Differences between predictors in terms of accuracy (MdAE) were assessed by pairwise Wilcoxon tests with p-values being corrected for multiple comparison according to Benjamini-Hochberg (42). Bland-Altman and circular Pearson correlation analyses were performed to evaluate the level of agreement in terms of prediction accuracy between both different platforms (RNA-Seq, NanoString) and different assays (saliva melatonin RIA, BodyTime assay). For Bland-Altman analyses the R-package BlandAltmanLeh was used. For circular Pearson correlation analysis, the R-package circStats was used. P-values lower than 0.05 were considered as statistically significant. All statistical analyses were performed in the statistics environment R (40).

Study approval

The two studies were conducted according to the tenets of the Declaration of Helsinki and were approved by the ethics committee of the Charité – Universitätsmedizin Berlin, Germany.

All study participants provided oral and written informed consent.

Author contributions

A.K., H.H., D.K., S.K., M.M., M.H. designed research study; M.M., B.K., B.M., C.W., F.B., J.Z., C.N., A.W., S.W., M.Z., O.B., R.A., H.L. performed experiments and collected data; N.W. and B.A. planned and carried out simulations; N.W., B.A., M.M., R.A., S.K., D.K., A.K. analysed and interpreted the data, N.W. and A.K. drafted the article; B.A., M.M., B.K., B.M., A.W., S.W., J.Z., S.K., H.H. critically revised the article; all authors approved the final version of the article.

Acknowledgements

We thank Anna Wirz-Justice for critical reading of the manuscript. The study was supported by the Bundesministerium für Bildung und Forschung, Germany (FKZ: 13N13160 and 13N13162) and Intellux GmbH Berlin, Germany.

References

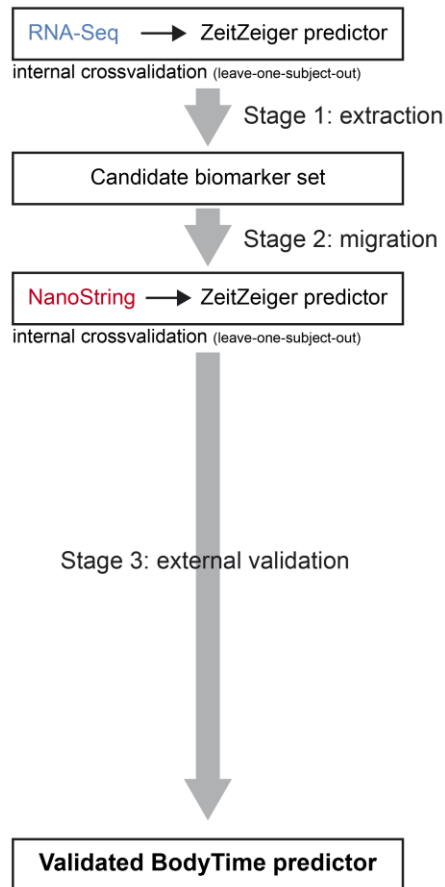
1. Yang G, Paschos G, Curtis AM, Musiek ES, McLoughlin SC, FitzGerald GA. Knitting up the raveled sleeve of care. *Sci Transl Med*. 2013;5(212):212rv3.
2. Zhang R, Lahens NF, Ballance HI, Hughes ME, Hogenesch JB. A circadian gene expression atlas in mammals: implications for biology and medicine. *Proc Natl Acad Sci U S A*. 2014;111(45):16219-16224.
3. Anafi RC, Francey LJ, Hogenesch JB, Kim J. CYCLOPS reveals human transcriptional rhythms in health and disease. *Proc Natl Acad Sci U S A*. 2017;114(20):5312-5317.
4. Montaigne D, Marechal X, Modine T, Coisne A, Mouton S, Fayad G, et al. Daytime variation of perioperative myocardial injury in cardiac surgery and its prevention by Rev-Erbalpha antagonism: a single-centre propensity-matched cohort study and a randomised study. *Lancet*. 2018;391(10115):59-69.
5. Dallmann R, Okyar A, Levi F. Dosing-Time Makes the Poison: Circadian Regulation and Pharmacotherapy. *Trends Mol Med*. 2016;22(5):430-445.
6. Hoyle NP, Seinkmane E, Putker M, Feeney KA, Krogager TP, Chesham JE, et al. Circadian actin dynamics drive rhythmic fibroblast mobilization during wound healing. *Sci Transl Med*. 2017;9(415).
7. Long JE, Drayson MT, Taylor AE, Toellner KM, Lord JM, Phillips AC. Morning vaccination enhances antibody response over afternoon vaccination: A cluster-randomised trial. *Vaccine*. 2016;34(24):2679-2685.
8. Bonten TN, Saris A, van Oostrom MJ, Snoep JD, Rosendaal FR, Zwaginga J, et al. Effect of aspirin intake at bedtime versus on awakening on circadian rhythm of platelet reactivity. A randomised cross-over trial. *Thromb Haemost*. 2014;112(6):1209-1218.
9. Ballesta A, Innominato PF, Dallmann R, Rand DA, Levi FA. Systems Chronotherapeutics. *Pharmacol Rev*. 2017;69(2):161-199.
10. Roenneberg T, Kuehnle T, Juda M, Kantermann T, Allebrandt K, Gordijn M, et al. Epidemiology of the human circadian clock. *Sleep Med Rev*. 2007;11(6):429-438.
11. Hsu PK, Ptacek LJ, Fu YH. Genetics of human sleep behavioral phenotypes. *Methods Enzymol*. 2015;552:309-324.
12. Stothard ER, McHill AW, Depner CM, Birks BR, Moehlman TM, Ritchie HK, et al. Circadian Entrainment to the Natural Light-Dark Cycle across Seasons and the Weekend. *Curr Biol*. 2017;27(4):508-513.
13. Wright KP, Jr., McHill AW, Birks BR, Griffin BR, Rusterholz T, Chinoy ED. Entrainment of the human circadian clock to the natural light-dark cycle. *Curr Biol*. 2013;23(16):1554-1558.
14. Allebrandt KV, Teder-Laving M, Kantermann T, Peters A, Campbell H, Rudan I, et al. Chronotype and sleep duration: the influence of season of assessment. *Chronobiol Int*. 2014;31(5):731-740.
15. Horne JA, Ostberg O. A self-assessment questionnaire to determine morningness-eveningness in human circadian rhythms. *Int J Chronobiol*. 1976;4(2):97-110.
16. Danilenko KV, Verevkin EG, Antyufeyev VS, Wirz-Justice A, Cajochen C. The hockey-stick method to estimate evening dim light melatonin onset (DLMO) in humans. *Chronobiol Int*. 2014;31(3):349-355.

17. Klerman EB, Gershengorn HB, Duffy JF, Kronauer RE. Comparisons of the variability of three markers of the human circadian pacemaker. *J Biol Rhythms*. 2002;17(2):181-193.
18. American Academy of Sleep Medicine, eds. *The International Classification of Sleep Disorders – Third Edition (ICSD-3)*. Darien, Illinois, USA: American Academy of Sleep Medicine; 2014.
19. Ueda HR, Chen W, Minami Y, Honma S, Honma K, Iino M, et al. Molecular-timetable methods for detection of body time and rhythm disorders from single-time-point genome-wide expression profiles. *Proc Natl Acad Sci U S A*. 2004;101(31):11227-11232.
20. Kasukawa T, Sugimoto M, Hida A, Minami Y, Mori M, Honma S, et al. Human blood metabolite timetable indicates internal body time. *Proc Natl Acad Sci U S A*. 2012;109(37):15036-15041.
21. Hughey JJ. Machine learning identifies a compact gene set for monitoring the circadian clock in human blood. *Genome Med*. 2017;9(1):19.
22. Laing EE, Moller-Levet CS, Poh N, Santhi N, Archer SN, Dijk DJ. Blood transcriptome based biomarkers for human circadian phase. *Elife*. 2017;6.
23. Goossens N, Nakagawa S, Sun X, Hoshida Y. Cancer biomarker discovery and validation. *Transl Cancer Res*. 2015;4(3):256-269.
24. Keller M, Mazuch J, Abraham U, Eom GD, Herzog ED, Volk HD, et al. A circadian clock in macrophages controls inflammatory immune responses. *Proc Natl Acad Sci U S A*. 2009;106(50):21407-21412.
25. Spies CM, Hoff P, Mazuch J, Gaber T, Maier B, Strehl C, et al. Circadian rhythms of cellular immunity in rheumatoid arthritis: a hypothesis-generating study. *Clin Exp Rheumatol*. 2015;33(1):34-43.
26. Veldman-Jones MH, Brant R, Rooney C, Geh C, Emery H, Harbron CG, et al. Evaluating Robustness and Sensitivity of the NanoString Technologies nCounter Platform to Enable Multiplexed Gene Expression Analysis of Clinical Samples. *Cancer Res*. 2015;75(13):2587-2593.
27. Wallden B, Storhoff J, Nielsen T, Dowidar N, Schaper C, Ferree S, et al. Development and verification of the PAM50-based Prosigna breast cancer gene signature assay. *BMC Med Genomics*. 2015;8:54.
28. Minors DS, Waterhouse JM. The use of constant routines in unmasking the endogenous component of human circadian rhythms. *Chronobiol Int*. 1984;1(3):205-216.
29. Hughey JJ, Hastie T, Butte AJ. ZeitZeiger: supervised learning for high-dimensional data from an oscillatory system. *Nucleic Acids Res*. 2016;44(8):e80.
30. Bleeker SE, Moll HA, Steyerberg EW, Donders AR, Derksen-Lubsen G, Grobbee DE, et al. External validation is necessary in prediction research: a clinical example. *J Clin Epidemiol*. 2003;56(9):826-832.
31. Archer SN, Laing EE, Moller-Levet CS, van der Veen DR, Bucca G, Lazar AS, et al. Mistimed sleep disrupts circadian regulation of the human transcriptome. *Proc Natl Acad Sci U S A*. 2014;111(6):E682-691.
32. Scheiermann C, Kunisaki Y, Frenette PS. Circadian control of the immune system. *Nat Rev Immunol*. 2013;13(3):190-8.
33. Benloucif S, Burgess HJ, Klerman EB, Lewy AJ, Middleton B, Murphy PJ, et al. Measuring melatonin in humans. *J Clin Sleep Med*. 2008;4(1):66-69.

34. Shishkin AA, Giannoukos G, Kucukural A, Ciulla D, Busby M, Surka C, et al. Simultaneous generation of many RNA-seq libraries in a single reaction. *Nat Methods*. 2015;12(4):323-325.
35. Afik S, Bartok O, Artyomov MN, Shishkin AA, Kadri S, Hanan M, et al. Defining the 5 and 3 landscape of the Drosophila transcriptome with Exo-seq and RNaseH-seq. *Nucleic Acids Res*. 2017;45(11):e95.
36. Wang L, Wang S, Li W. RSeQC: quality control of RNA-seq experiments. *Bioinformatics*. 2012;28(16):2184-2185.
37. Dobin A, Davis CA, Schlesinger F, Drenkow J, Zaleski C, Jha S, et al. STAR: ultrafast universal RNA-seq aligner. *Bioinformatics*. 2013;29(1):15-21.
38. Derr A, Yang C, Zilionis R, Sergushichev A, Blodgett DM, Redick S, et al. End Sequence Analysis Toolkit (ESAT) expands the extractable information from single-cell RNA-seq data. *Genome Res*. 2016;26(10):1397-1410.
39. Robinson MD, McCarthy DJ, Smyth GK. edgeR: a Bioconductor package for differential expression analysis of digital gene expression data. *Bioinformatics*. 2010;26(1):139-140.
40. R Core Team, eds. *R: A language and environment for statistical computing*. Vienna, Austria: R Foundation for Statistical Computing; 2012.
41. Hastie T, Tibshirani R, Friedman JH, eds. *The Elements of Statistical Learning*. New York, New York, USA: Springer; 2001.
42. Benjamini Y, Hochberg, Y. Controlling the false discovery rate – a practical and powerful approach to multiple testing. *J Roy Stat Society B*. 1995;57(1):289-300.

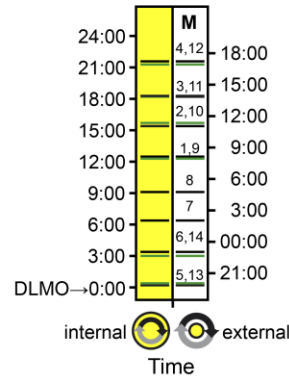
Figures

A Biomarker discovery pipeline

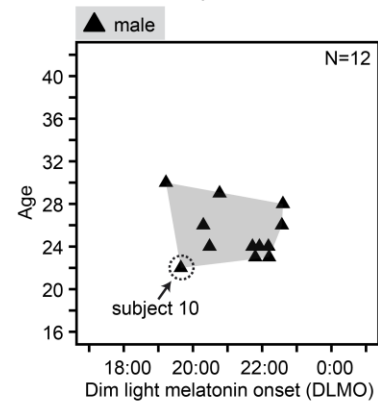


B Study 1 (BOTI): Biomarker extraction and migration

Sampling scheme (subject 10)
(every 3h over a period of 40 hours, M=14)

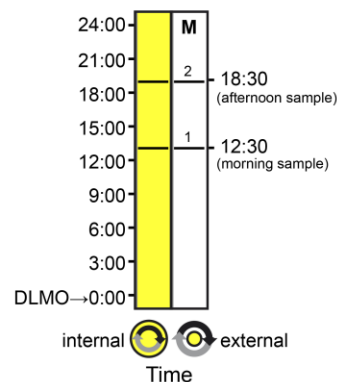


Study cohort



C Study 2 (VALI): Biomarker validation

Sampling scheme (subject 9)
(every 6h over a period of 6 hours, M=2)



Study cohort

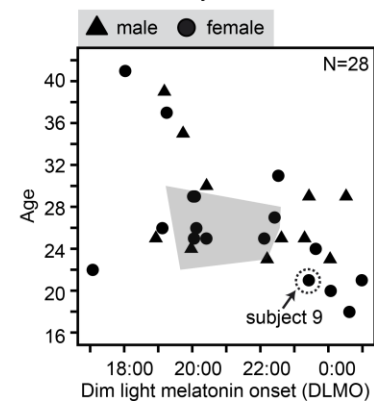


Figure 1. Biomarker discovery strategy, sampling schemes and study cohorts. (A) Biomarker discovery pipeline. (B) Sampling scheme and composition of the BOTI study cohort (N=12 subjects) by gender, age and dim light melatonin onset (DLMO). Blood samples were drawn at regular 3-hour intervals over a period of 40 hours (M=14 samples per subject). Each sample was assigned an external time (CET) and an internal time (hours past DLMO according to saliva melatonin RIA). The displayed sampling scheme is representative of the subject highlighted by a circle in the study cohort plot (green lines indicated sampling times on the second day). (C) Sampling scheme and composition of the VALI study cohort (N=28 subjects) by gender, age and DLMO. The spread of the BOTI study cohort (B) in the same coordinate system is shaded in grey. In contrast to the BOTI study, the VALI study includes extreme and moderately extreme chronotypes. For each subject two blood samples were obtained, drawn 6 h apart (M1: morning sample, M2: afternoon sample). Each sample was assigned an external time (CET) and an internal time (hours past DLMO derived from saliva melatonin secretion profiles).

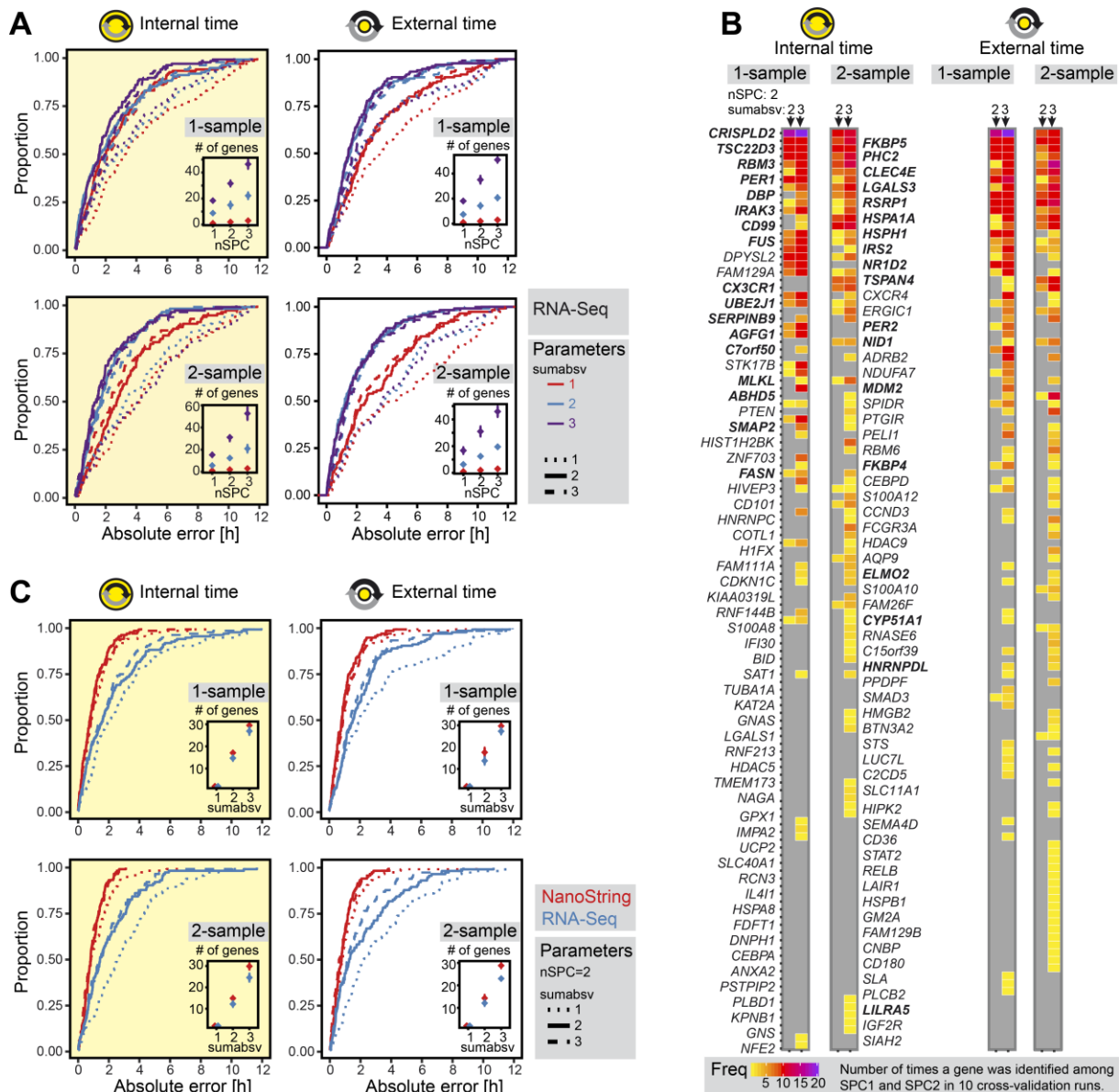


Figure 2. Extraction of candidate biomarkers and migration to the NanoString platform. (A) Cumulative frequency distributions of the absolute prediction errors for four types of ZeitZeiger internal cross-validation predictors of either internal or external time by 1- or 2-sample mRNA abundance profiles ($n=136$). Each type of predictor was built for nine combinations of the ZeitZeiger parameters $\text{sumabsv}=\{1, 2, 3\}$ and $\text{nSPC}=\{1, 2, 3\}$. Insets show the average number of genes \pm SD in the internal cross-validation predictors as a function of sumabsv and nSPC . (B) Global gene sets of the best-performing internal cross-validation predictors shown in panel A. Each column depicts a predictor defined by the type of the predictor variable (internal or external time), the format of the data input (1-sample or 2-sample) and the ZeitZeiger parameters (sumabsv , nSPC). Each predictor includes ten leave-one-subject-out cross-validation runs, i.e. ten gene sets. The ordering (from top to bottom) and the colors indicate how often a gene was identified as time-telling and assigned to SPC1, SPC2 or both among those ten gene sets. 34 genes that showed a high frequency of identification among cross-validation runs and were consistently identified across the best-performing predictors were chosen as a candidate biomarker set for internal time and migrated to the NanoString platform (highlighted in bold).

font). (C) Impact of platform migration on the performance of the candidate biomarkers for internal time. Given are cumulative frequency distributions of the absolute prediction errors of ZeitZeiger internal cross-validation models built on either RNA-Seq (blue) or NanoString data (red) obtained from the same RNA preparations. Platform comparison was performed for four types of predictors of either internal or external time by 1- or 2-sample mRNA abundance profiles ($n=136$).

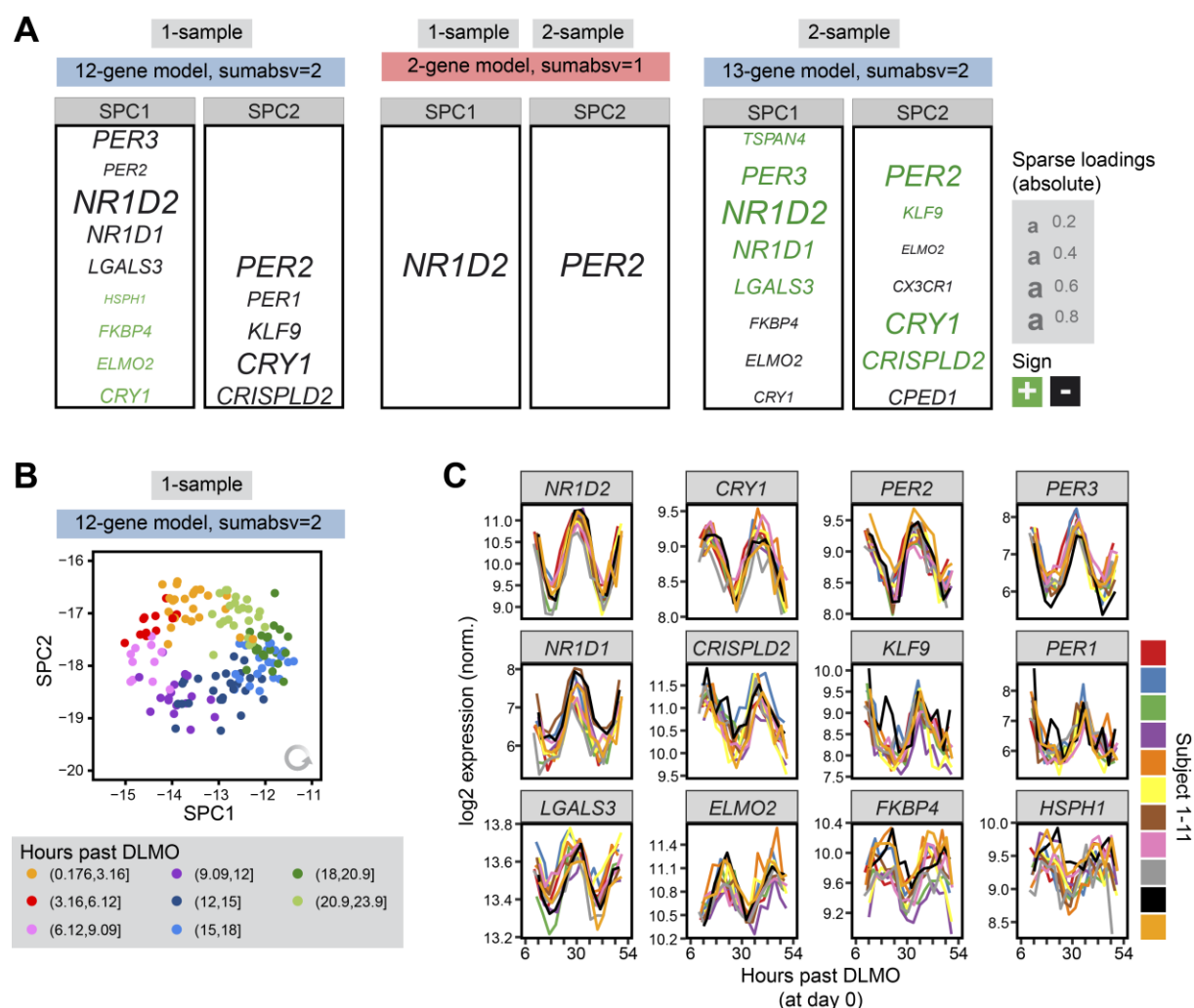


Figure 3. Composition and properties of the final NanoString BodyTime predictors. (A) 1-sample and 2-sample predictors trained on the NanoString data of the BOTI study ($n=154$ samples) for sumabsv={1, 2} and nSPC=2. Genes assigned to SPC1 or SPC2 as well as their loadings are shown. (B) NanoString expression profiles of the BOTI study's samples ($n=154$) in the SPC space of the 1-sample 12-gene predictor. Colors indicate bins of the internal time. (C) Time course of expression of the genes building the 1-sample 12-gene predictor. Colors indicate the individual subjects of the BOTI study. Each time course starts with the internal time of the first sample of a subject (M1, day 1) and ends with its last (M14, day 2).

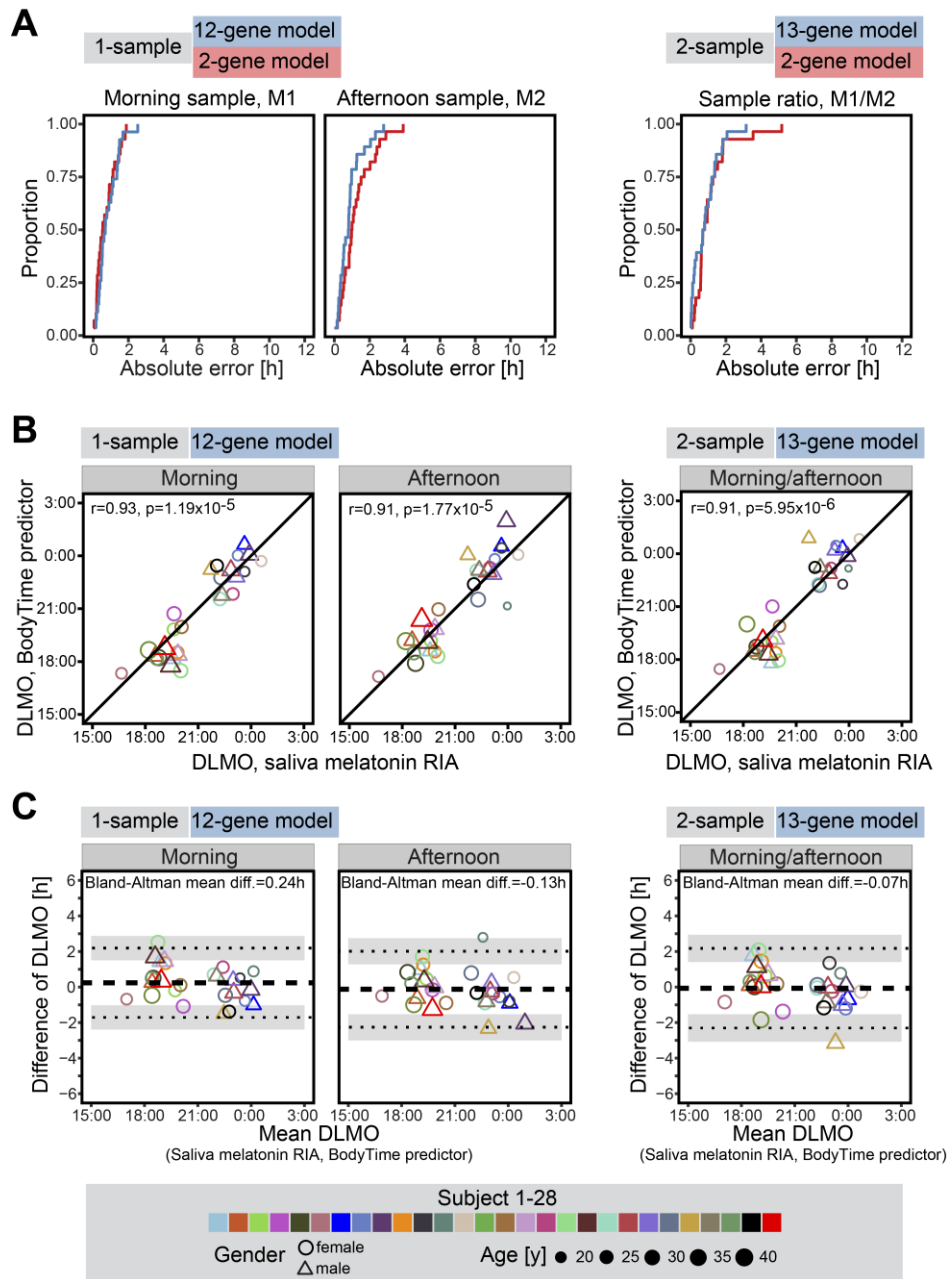


Figure 4. External validation and performance of the NanoString BodyTime predictors. (A) Cumulative frequency distributions of the absolute prediction errors of the 1-sample and 2-sample NanoString BodyTime predictors when they were applied to the VALI study data set. In case of the 1-sample assay, the internal time stamps of all morning (M1) or afternoon (M2) samples were predicted; in case of the 2-sample assay the time stamp of the sample ratio was predicted (M1/M2). Proportion refers to the number of predictions with an absolute error that is less or equal to the specified value divided by the total number of predictions (1-sample, M1: n=28, 1-sample, M2: n=28, 2-sample, M1/M2: n=28). **(B)** Correlation of DLMO estimated by the BodyTime predictors and DLMO determined by the saliva melatonin RIA kit (gold standard); circular Pearson correlation coefficients (r) and p -values are indicated. **(C)** Bland-

Altman analysis of the bias between saliva melatonin RIA and BodyTime estimations. The dashed horizontal line indicates the mean of the differences (bias), dotted lines represent the upper and lower limits (mean of the differences \pm 2 standard deviations) with their 95% confidence intervals being shaded light gray. The morning sample of one subject was excluded from A-C because its 12-gene predictor maximum likelihood curve was ambiguous.

Tables

Table 1. Best-performance internal cross-validation predictors built on the BOTI RNA-Seq or NanoString data sets.^a

Predictor (time)	Assay	Data source	Parameters (sumabsv, nSPC)	Number of genes (mean \pm sd)	MdAE [IQR]	AE \leq 1 h [% of samples]	AE \leq 2h [% of samples]
internal	1-sample	RNA-Seq	2, 2	15 \pm 3	1.6 [3.2]	39.0	53.7
internal	1-sample	RNA-Seq	3, 2	32 \pm 2	1.6 [2.4]	38.2	59.6
internal	2-sample	RNA-Seq	2, 2	12 \pm 2	1.7 [1.9]	35.7	59.1
internal	2-sample	RNA-Seq	3, 2	30 \pm 3	1.4 [1.9]	40.9	58.7
external	1-sample	RNA-Seq	2, 2	14 \pm 2	1.6 [2.0]*	33.8	59.6
external	1-sample	RNA-Seq	3, 2	35 \pm 3	1.4 [1.8]	34.6	64.0
external	2-sample	RNA-Seq	2, 2	12 \pm 1	1.2 [2.3]*	43.5	66.1
external	2-sample	RNA-Seq	3, 2	31 \pm 4	1.4 [2.4]*	40.9	64.3
internal	1-sample	NanoString	1, 2	2 \pm 0	0.9 [1.2]	55.2	79.2
internal	1-sample	NanoString	2, 2	14 \pm 1	0.8 [1.1]	59.7	88.3
internal	1-sample	NanoString	3, 2	30 \pm 1	0.8 [1.1]	59.1	87.0
internal	2-sample	NanoString	1, 2	2 \pm 0	0.8 [1.1]*	61.4	85.6
internal	2-sample	NanoString	2, 2	13 \pm 2	0.7 [1.0]	64.4	90.9
internal	2-sample	NanoString	3, 2	29 \pm 1	0.7 [1.0]*	61.4	90.9

^aAsterisks indicate cases where the absolute prediction error showed significant variation across 3 h time bins (Kruskal-Wallis test p-value < 0.05).

Table 2: External validation of the BodyTime predictors in the independent VALI study.

Predictor	Type of validation sample	Absolute prediction error median [IQR]	Absolute prediction error ≤ 1 h [% of samples]	Absolute prediction error ≤ 2 h [% of samples]
1-sample, 12-gene	morning	0.69 [0.82]	63.0	96.3
	afternoon	0.80 [0.62]	60.7	92.9
1-sample, 2-gene	morning	0.54 [0.87]	71.4	100.0
	afternoon	0.99 [1.00]	50.0	78.6
2-sample, 13-gene	morning/afternoon	0.74 [1.10]	60.7	92.9
2-sample, 2-gene	morning/afternoon	0.75 [0.72]	64.3	92.9

