

A human non-XLA immunodeficiency disease characterized by blockage of B cell development at an early proB cell stage.

E Meffre, ... , A Fischer, C Schiff

J Clin Invest. 1996;**98**(7):1519-1526. <https://doi.org/10.1172/JCI118943>.

Research Article

We report a detailed analysis of a B cell defect affecting a patient girl born from first cousin parents, characterized by a severe non-X-linked agammaglobulinemia with a total absence of CD19⁺ cells in the periphery. In the bone marrow, CD19 expression was also highly impaired, resulting in the absence of both B and preB compartments. By contrast, CD34⁺CD10⁺, CD34⁺psiL⁺, and some CD19⁺CD10⁺ mostly CD34⁺ early proB cells were present, although diminished. Semiquantitative RT-PCR analysis performed on mononuclear bone marrow cells indicated that lambda-like, VpreB, Rag-1, Rag-2, and TdT transcripts expressed during proB cell stages were found at normal levels whereas E2A, CD10, Syk, Pax-5, CD19, Igalpha, Igbeta, VH-Cmu, and Vkappa-Ckappa transcripts characteristic of later stages were severely depressed. This phenotype resembles that of Pax-5 knock-out mice, but since the coding sequence of the patient Pax-5 cDNA was shown to be normal, the defect might rather result from an altered regulation of this gene. All these data indicate that the patient suffers from a new genetic defect that results in an arrest of differentiation within the proB cell compartment, i.e., earlier than X-linked agammaglobulinemia, before the onset of Ig gene rearrangements.

Find the latest version:

<https://jci.me/118943/pdf>



A Human Non-XLA Immunodeficiency Disease Characterized by Blockage of B Cell Development at an Early ProB Cell Stage

E. Meffre,* F. LeDeist,† G. de Saint-Basile,‡ A. Deville,§ M. Fougereau,* A. Fischer,‡ and C. Schiff*

*Centre d'Immunologie de Marseille-Luminy, 13288 Marseille Cedex 09, France; †INSERM U429, Hôpital Necker, Enfants Malades, 75743 Paris Cedex 15, France; and ‡Fondation Lenval, Hôpital pour Enfants, Immuno-Hématologie, 06200 Nice, France

Abstract

We report a detailed analysis of a B cell defect affecting a patient girl born from first cousin parents, characterized by a severe non-X-linked agammaglobulinemia with a total absence of CD19⁺ cells in the periphery. In the bone marrow, CD19 expression was also highly impaired, resulting in the absence of both B and preB compartments. By contrast, CD34⁺CD10⁺, CD34⁺ΨL⁺, and some CD19⁺CD10⁺ mostly CD34⁺ early proB cells were present, although diminished. Semiquantitative RT-PCR analysis performed on mononuclear bone marrow cells indicated that λ-like, VpreB, Rag-1, Rag-2, and TdT transcripts expressed during proB cell stages were found at normal levels whereas E2A, CD10, Syk, Pax-5, CD19, Igα, Igβ, V_H-C_μ, and V_κ-C_κ transcripts characteristic of later stages were severely depressed. This phenotype resembles that of Pax-5 knock-out mice, but since the coding sequence of the patient Pax-5 cDNA was shown to be normal, the defect might rather result from an altered regulation of this gene. All these data indicate that the patient suffers from a new genetic defect that results in an arrest of differentiation within the proB cell compartment, i.e., earlier than X-linked agammaglobulinemia, before the onset of Ig gene rearrangements. (*J. Clin. Invest.* 1996; 98:1519–1526.) Key words: proB cells • surrogate light chain • Ig genes • Btk • Pax-5

Introduction

B cell development from pluripotent stem cells proceeds through proB, preB, and B cell stages that may be followed by a variety of experimental approaches: (a) sequential acquisition and/or loss of a number of cell surface markers (1, 2), such as, in humans, CD34, CD10, CD19, CD20; (b) occurrence of successive Ig gene rearrangements that follow an essentially regulated kinetics, H → κ → λ (3); (c) follow-up of fully rearranged gene expression and also detection of germ-line tran-

scripts that precede most rearrangement events (4); and (d) identification of mutations occurring in genes responsible for a block in B cell differentiation (5).

Among the earliest cell surface markers of the B lineage, the surrogate light chains (ΨL) are of special interest. They are encoded by the λ-like gene in humans (6–8) or the λ5 in the mouse (9), and the VpreB gene (10, 11). At the proB cell stage, ΨL are expressed at the cell surface in the absence of μ chains (12–14). Recently, using “proB specific” anti-VpreB mAbs, we have identified proB cell subpopulations that are CD34⁺ΨL⁺ and do or do not express CD10 and/or CD19 markers in normal human bone marrow (see reference 22). Normal preB cells have been identified within the CD19⁺ population (15), either as having ΨL associated with μ (6, 14–17), or as a CD34⁺CD19⁺ fraction that contains intracytoplasmic μ chains (18). In addition, Igα and Igβ, which constitute the signaling elements of the B cell receptor, and are encoded by the mb1 and B29 genes, respectively (19), were also detected at the cell surface of preB (20, 21), but not proB cells (22).

X-linked agammaglobulinemia (XLA),¹ also known as Bruton's disease, is a rare immunoglobulin deficiency characterized by severe decrease or absence of mature B cells and serum immunoglobulins (23). Mutations in the Bruton's tyrosine kinase (Btk) gene have been shown to be responsible for a blockage at the preB stage (24, 25), resulting in the accumulation of proB (CD34⁺CD19⁺) and presence of preB (CD34⁺CD19⁺) cells in the bone marrow (26). The preB cells express normal amounts of λ-like and VpreB transcripts and a V-D-J-C_μ repertoire characteristic of normal preB cells (26). Conley and Sweinberg have reported in two girls a recessive disorder that is phenotypically identical to XLA but which is of possible autosomal origin (27). Recently in a similar case, defect in the Btk gene was also ruled out (28). In this patient, presence of CD10⁺ cells but absence of CD19⁺ cells and a 10-fold decrease of mature V-D-J-C_μ transcripts suggested a blockage at an earlier stage of B cell development.

In this paper, we describe another young female patient with a severe agammaglobulinemia and demonstrate, by a detailed analysis of B cell subpopulations and B cell specific transcripts, a blockage at an early proB cell stage of the B cell differentiation pathway before the onset of Ig gene rearrangement. This case is reminiscent of the Pax5^{-/-} phenotype in the mouse (29).

Address correspondence to Dr. Claudine Schiff, Centre d'Immunologie de Marseille-Luminy, Case 906, 13288 Marseille Cedex 9, France. Phone: 33-91-26-94-48; FAX: 33-91-26-94-30; E-mail: schiff@ciml.univ-mrs.fr

Received for publication 5 April 1996 and accepted in revised form 30 July 1996.

J. Clin. Invest.

© The American Society for Clinical Investigation, Inc.

0021-9738/96/10/1519/08 \$2.00

Volume 98, Number 7, October 1996, 1519–1526

1. Abbreviations used in this paper: Btk, Bruton's tyrosine kinase; XLA, X-linked agammaglobulinemia.

Methods

Case report. The patient is a girl born to healthy first cousin parents. From the age of 4 mo, she suffered from recurrent infections, consisting of otitis media, candidiasis, arthritis caused by *Hemophilus influenzae*, and *Herpes simplex* stomatitis associated with failure to thrive. She was referred to Hôpital des Enfants-Malades at the age of 11 mo for suspicion of an immunodeficiency condition. Lymphocyte counts were within normal range or increased (4,000–13,000/ μ l) while a neutropenia was detected (500/ μ l). In peripheral blood no serum immunoglobulins were detectable (IgG < 0.07 grams/liter, IgA < 0.08 grams/liter, IgM < 0.07 grams/liter). Lymphocyte phenotyping showed the absence of sIgM⁺CD19⁺ mature B cells, while T lymphocyte subsets were present (Table I). The CD4 to CD8 ratio that was inverted in the first analysis (presumably due to an infectious episode) was normal as shown when rechecked 6 mo later. Mitogen- and antigen-induced proliferation was also found to be normal (Table I). Cytogenetic analysis of lymphocytes did not detect any anomaly. In particular, a normal 46XX karyotype was observed both in blood and bone marrow of the patient (data not shown), excluding the possibility of a Turner syndrome or an X-autosome translocation. Furthermore, absence of detectable X-allelic polymorphism in this patient prevented X inactivation pattern analysis. After onset of intravenous immunoglobulin substitution, clinical status improved, growth normalized, and neutropenia resolved.

The parents gave informed consent for this study. The bone marrow sample was obtained when the patient was 18 mo old and under general anesthesia required for central line insertion. Age-matched control cells were an aliquot obtained from a healthy donor in the course of a bone marrow transplantation.

X inactivation pattern analysis. X inactivation pattern analysis was performed using a PCR-based detection of the X-linked androgen receptor gene as previously described (30), on DNA isolated from CD19⁻ and CD19⁺ sorted cells from the patient's mother using a FACStar[®] cell sorter (Becton Dickinson, San Diego, CA).

Antibodies. Cell surface phenotyping was performed by direct immunofluorescence using FITC-mAb anti-CD10, anti-CD13, anti-CD19, anti-CD20, anti-CD22, anti-CD34, anti-CD38, or PE-mAb

anti- α/β TcR (BMA031, IgG1) or anti- γ/δ TcR (IMMU510, IgG1) all purchased from Immunotech SA (Marseille, France). FITC-anti-CD3 (Leu 4, IgG1), anti-CD2 (Leu 5b, IgG2a), anti-CD4 (Leu 3a, IgG1), and PE-anti-CD8 (Leu 2a, IgG1) were from Becton Dickinson. FITC-sIgM was from Nordic Immunology (Tilburg, The Netherlands) and FITC-anti-CD24 was from Tebu Caltag Laboratories (San Francisco, CA). Indirect immunofluorescence using 9C2 (14) and 3C7 (22) anti-VpreB mAbs, and PE-labeled F(ab')₂ goat anti-mouse IgM (Jackson ImmunoResearch Laboratories, Inc., West Grove, PA) as revealing antibodies.

Cell surface staining. Cells (2×10^5) were incubated with mAb for 30 min on ice. After three washes with PBS 0.2% BSA, 0.1% NaN₃, cells were incubated for 30 min with 100 μ l of revealing antibodies. Irrelevant IgM mAb (IgM negative control; Immunotech SA) was included as a control. Immunofluorescence was analyzed using a FACScan[®] analyzer (Becton Dickinson).

Proliferation assays. PBMC were isolated from freshly drawn heparinized blood by means of Ficoll-Hypaque (Pharmacia Fine Chemicals, Uppsala, Sweden) density gradient centrifugation. Proliferation assays were performed as described elsewhere (31). In brief, PBMC were stimulated either with 50 ng/ml of anti-CD3 (OKT3, IgG2a; Ortho Pharmaceutical, Raritan, NJ) in a 4-d culture or by 1:250 final dilution of tetanus toxoid (Pasteur-Merieux, Lyon, France) and 50 μ g/ml of Candidin (Pasteur Diagnostic, Marne la coquette, France) in a 6-d culture. Data are the mean incorporation of [³H]thymidine for the last 18 h of culture.

PCR. cDNA from bone marrow cells was first prepared from total RNA of 4×10^6 cells, using 150 ng of oligo dN6 as primer and the reverse transcriptase (BRL, Cergy-Pontoise, France), according to the manufacturer's instructions. PCR was performed in a Cetus apparatus using 1/20 of cDNA with 50 pmol of each oligonucleotide as primer (Table II). To ensure that PCR products were not derived from DNA, primers were defined from discrete exons for each transcript, except Rag-1 and Rag-2. In these cases, RNA preparations were treated with DNase (Boehringer Mannheim Corp., Indianapolis, IN) and a PCR control without RT was included. Quantification was performed by reference to amplification of 25, 2.5, and 0.25 ng actin mRNA. The first cycle was run as follows: denaturation at 94°C for 3 min, annealing at temperatures indicated in Table II for 1 min, and synthesis at 72°C for 2 min. The next 28 cycles were run similarly, except that denaturation lasted only 1 min. For the last cycle, synthesis time was 7 min. One-fourth of the amplified products was run in agarose gel made 1 or 2% in 1 \times TBE.

Cloning and sequence analysis of the Pax-5 cDNA. PCR product of Pax-5 cDNA (1,208 bp) derived from patient bone marrow mononuclear cells was purified using QIA quick spin PCR purification kit (Qiagen, Coger, France) and cloned in competent *Escherichia coli* by using the TA cloning[™] system (Invitrogen, Leek, The Netherlands). Double-strand DNA sequence of the PCR product was performed using the dideoxy chain termination protocol with ³⁵SdATP, a modified T7 DNA polymerase, a Sequenase kit (United States Biochemical Corp., Cleveland, OH), using -40 and SP6 oligonucleotides and the following internal specific primers derived from the Pax-5 cDNA published sequence (32): antisense 5'ATCCTGTTGATGGAAGTACGAC3' position 468–488; sense 5'CTCTGTGGTGGTGAAGATGTCT3' position 794–815; antisense 5'TGTTTGAGAGGCAGCACTACTC3' position 816–837.

Table I. Characterization of Patient's Peripheral Blood Lymphocytes

	Patient (18 mo)	Controls (age-matched)
Lymphocyte counts (per μ l)	4–13 $\times 10^3$	4–6 $\times 10^3$
Lymphocyte phenotype (%)		
CD19	< 1 (< 1)*	5–25
Surface μ	0 ND	5–25
CD2	98 ND	75–95
CD3	92 (94)	70–90
CD4	36 (59)	35–65
CD8	55 (33)	15–35
TcR α/β /CD3	99 (96)	90–99
TcR γ/δ /CD3	1 (3)	1–10
Lymphocyte proliferation (cpm $\times 10^3$)		
None (day 3)	0.2	0.7 \pm 0.3
Anti-CD3 mAb	30	36 \pm 23
None (day 6)	0.5	0.5 \pm 0.2
Tetanus toxoid	43	31 \pm 21
Candida Ag	37	34 \pm 21

*Numbers in parentheses correspond to a second sampling performed 6 mo later.

Results

Random X inactivation pattern of the patient's mother. Using a PCR-based detection of the X-linked androgen receptor gene (30), a similar random X inactivation pattern was observed in the patient's mother for both the CD19⁺ and CD19⁻ sorted PBMC, indicating that she was not an XLA carrier (data not shown).

Table II. Oligonucleotide Primers Used for cDNA-PCR Amplification

		Primers used (5' to 3')	Annealing temperature	Product size (bp)
Actin	sense	TACCACTGGCATCGTGATGGACT3'	65°C	507
	antisense	TCCTTCTGCATCCTGTCCGGCAAT3'		
Rag-1	sense	CCAGCTGTTTGCTTGCCATCCGT	65°C	353
	antisense	TTGGGATCTCATGCCTTCCAAGAT		
Rag-2	sense	ATGTCCCTGCAGATGGTAACA	55°C	246
	antisense	GCCTTTGTATGAGCAAGTAGC		
TdT	sense	TATGAGAGCAGCTTCTGTATTG	58°C	375
	antisense	TCTTTAACCAGCACACTGACG		
λ-like	sense	<i>ATGCATGCGGCCGCGGCATGTGTTTGCCAGC</i>	60°C	194
	antisense	<i>ATCCGCGGCCGCATCGATAGGTCACCGTCAAGATT</i>		
VpreB	sense	CATGCTGTTTGTCTACTGCACAG	60°C	396
	antisense	TGCAGTGGGTTCCATTTCTCC		
I _μ /CH1 _μ	sense	AGATTCTGTTCCGAATCACCGATGC	68°C	340
	antisense	AAGGAAGTCCTGTGCGAGGCAGC		
VHcons. C _μ	sense	GACACGGCCGTGTATTACTG	60°C	150–200
	antisense	<i>ATCCGCGGCCGCGGAATTCTCACAGGAGACGA</i>		
V _κ cons. I _κ C _κ	sense	ATGACCCAGTCTCCATCCTCCCTG	65°C	390–410 (V _κ /C _κ) 207 (I _κ /C _κ)
	sense	<i>GTTGAGCTTCAGCAGCTGACCCA</i>		
	antisense	<i>ATGCGGCCGCGGAAGATGAAGACAGATG</i>		
Igα (mb1)	sense	<i>TAGTCGACATGCCTGGGGTCCAGGAGTCCTC</i>	68°C	697
	antisense	<i>TAGGATCCTCACGGCTTCTCCAGCTGGACATC</i>		
Igβ (B29)	sense	<i>CGGTGACATGGCCAGGCTGGCGTTGTCTCCT</i>	68°C	716
	antisense	<i>ATGGATCCTCACTCCTGGCTGGGTGCTCACC</i>		
CD10	sense	CTGTGACAATGATCGCACTCTATG	65°C	584
	antisense	GATTCCAGTGCATTCATAGTAATCTC		
CD19	sense	CGAGTTCTATGAGAACGACTC	60°C	596
	antisense	ACTGGAAGTGTCACTGGCATG		
IL7Rα	sense	CAGAATGACAATTCTAGGTACAAC	62°C	1431
	antisense	AATCATCTTTGTGCTCACGGT		
E2A	sense	GCTGACCACTCGGAGGAG	62°C	297
	antisense	CGCTCTCGCACCTGCTGC		
Id	sense	CTGCTATAACAACATGAACGACTGC	62°C	285
	antisense	GCTGTCATTTGACATTAACCTCAGAAGG		
Syk	sense	GCATGGCTGACAGCGCCAAC	62°C	1810
	antisense	GTTAGTTCACCACGTCATAGTAG		
Btk	sense	<i>GGATCCGGTGAACCTCCAGAAAGAAGAAG</i>	58°C	2095
	antisense	<i>GCGGCCGCCCCGGGCTCCAGGGCTCCTAAGCTTGG</i>		
Pax-5	sense	CTGTCCATTCCATCAAGTCCTG	63°C	1218
	antisense	TCAGTGACGGTCATAGGCAGTG		

Linker sequences are italicized.

Phenotypic analysis of patient bone marrow cells reveals a major defect in B cell differentiation. The main characteristic of the patient's PBMC was the absence of CD19⁺ and surface μ⁺ cells (Table I). For a more precise focus of the B cell impairment, bone marrow mononuclear cells were screened for a number of surface markers and compared with age-matched con-

trol, as indicated in Table III. CD34 expression was within normal values, whereas that of CD19, CD20, CD22, CD24, and surface μ⁺ which clearly assign commitment to the B lineage were severely depressed. Expression of CD10, although markedly diminished points to a defect which should be located at early B cell precursor stages. As shown earlier, 3C7 mAb iden-

Table III. Phenotypic Characterization of Patient's Bone Marrow Mononuclear Cells

	Patient (18 mo)	Control (age-matched)
CD34	13	15
CD38	63	76
Ψ L (3C7)	2	4
Ψ L (9C2)	3	5
CD10	7	42
CD19	2.5	47
CD20	1	27
CD22	2	11
CD24	2.5	42
Surface μ	0	22
CD33	15	11
CD13	13	5
CD3	41	38

Cell populations were gated for the lymphoid light scatter. All values are percentages.

ties proB cells (Ψ L⁺ μ ⁻) whereas 9C2 mAb also encompasses identification of preB stages (22). Identification of surrogate light chain (Ψ L) by both reagents therefore indicates that the B differentiation pathways proceeds at least to the proB stage.

Two-color FACS[®] analysis performed on lymphoid cell gated populations visualized the absence of immature and/or mature B cells in patient's bone marrow (absence of μ and CD20, Fig. 1 B). The CD34⁻CD19⁺ preB cell population was also absent (Fig. 1 B), and the CD34⁺CD19⁺ proB cell population decreased (1.6 vs. 8.6%). The few CD19⁺ cells were positive for CD10 (2.5%, Fig. 1 A) and were mostly CD34⁺, strongly suggesting that differentiation did not proceed beyond proB cells. Presence of proB cells within the CD34⁺CD10⁺ population was also supported by the identification of Ψ L chain at the surface of 1.7% of CD34⁺ cells. The CD34⁺CD10⁺ was however smaller than that of the control (3.5 vs. 11%), indicating that the early proB compartment was already affected.

Identification of transcriptional defects in patient bone marrow cells. To approach the molecular defect, characterization of transcripts present in patient's cells was performed by RT-PCR using the primers described in Table II. Transcripts of total bone marrow cells from patient and age matched control were compared by reference to actin calibration (Fig. 2 A). We chose to analyze transcripts directly linked to Ig gene expression or rear-

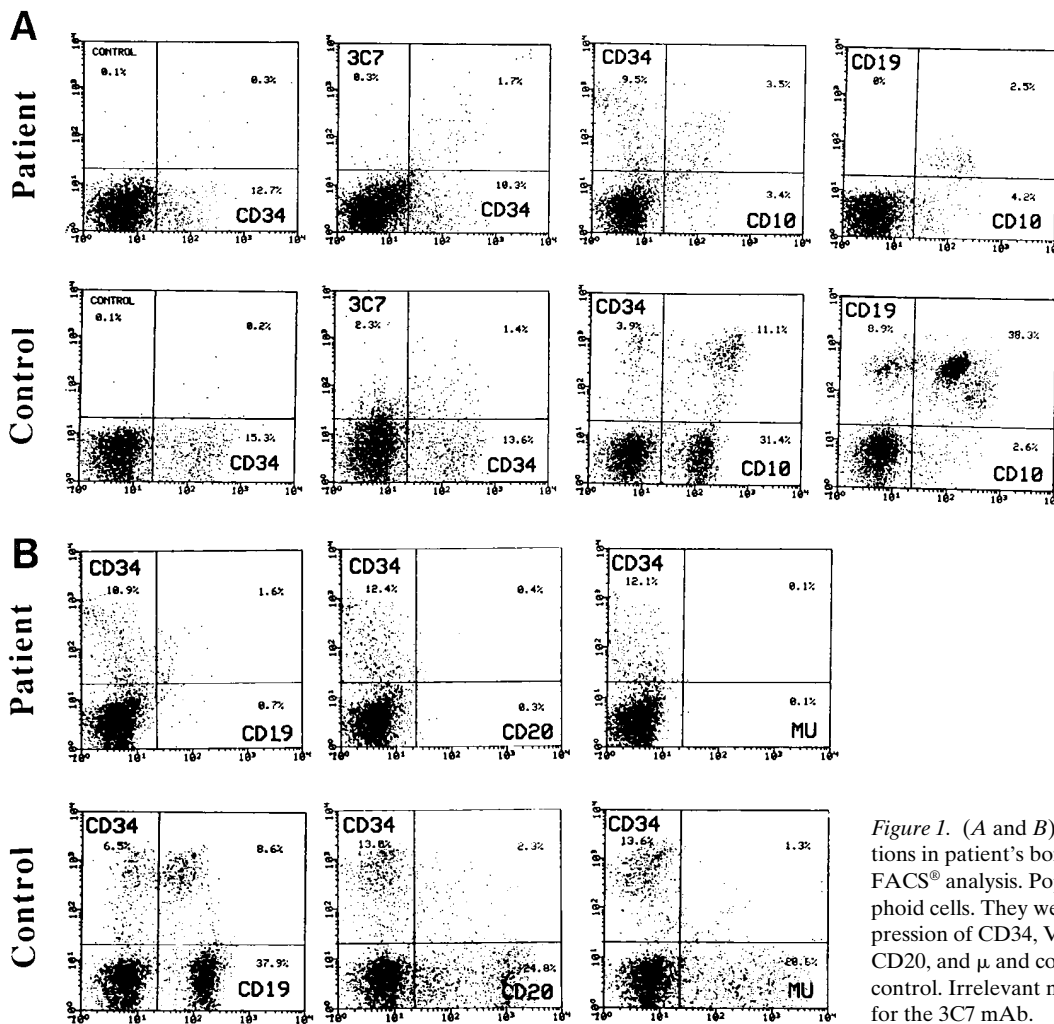


Figure 1. (A and B) Identification of cell populations in patient's bone marrow by two-color FACS[®] analysis. Populations were gated on lymphoid cells. They were analyzed for surface expression of CD34, VpreB (3C7), CD10, CD19, CD20, and μ and compared with age-matched control. Irrelevant mouse IgM served as control for the 3C7 mAb.

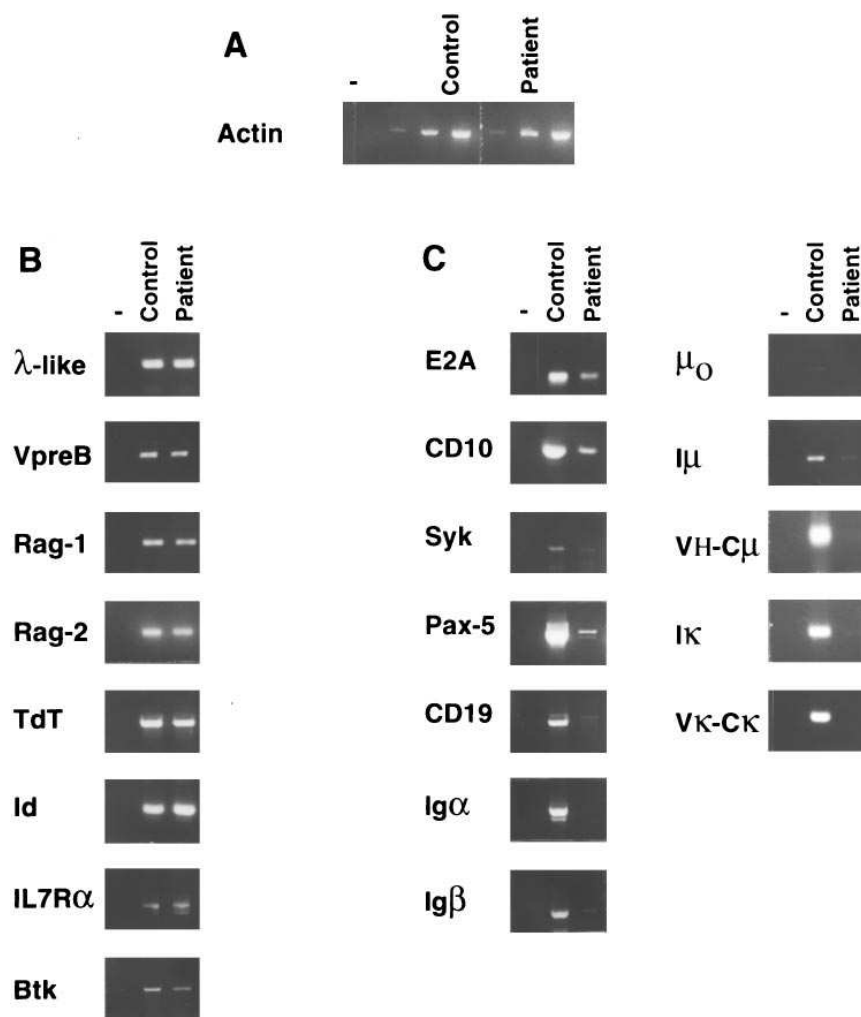


Figure 2. Transcriptional activity of the patient's bone marrow cells compared with an age-matched control. (A) Quantitative RT-PCR controls were performed on three dilutions (25, 2.5, and 0.25 ng) of cDNA with actin primers. (B and C) PCR were performed on 250 ng of cDNA, using primers and conditions depicted in Table I. A control without cDNA was included in the left column of each series (-).

rangements but also transcripts derived from genes which have been shown of importance in B cell differentiation at the proB stage, as evidenced from gene targeting or transgene overexpression experiments in the mouse, namely E2A (33), Pax-5 (29), Id (34), and IL7R α (35). The expression of Btk (36) and Syk (37), involved at a slightly later stage of differentiation, was also performed.

Among the classical markers directly linked to Ig gene expression, λ -like, VpreB, Rag-1, Rag-2, and TdT transcripts were clearly present in the same amount between the 2 samples (Fig. 2 B). Pertaining to this group of nonaffected transcripts were also found Id, IL7R α , and Btk (Fig. 2 B). By contrast, expression of transcripts corresponding to the heavy (V-D-J-C μ) and light (V κ -C κ) Ig rearranged gene loci was highly impaired or absent, respectively (Fig. 2 C). I μ (38) and I κ (39) sterile transcripts that initiate 5' of the E μ and E κ intronic enhancers, respectively, and which are normally expressed before the corresponding Ig gene rearrangements, were only faintly visible, as was the μ_0 sterile transcript that initiates 5' of the J H locus (40), but it should be emphasized that in the control it was already rather weak. Finally, E2A, CD10, Syk, Pax-5, CD19, Ig α , and Ig β expression was also affected in the patient, although at variable levels (Fig. 2 C). A more precise evaluation of the affected transcripts could not be given due to the limits of the quantification technique.

Taken together these results are in agreement with the above FACS[®] analysis, pointing to a blockage of differentiation at the proB stage in this patient, before the heavy chain locus rearrangements are completed.

Sequence determination of the Pax-5 cDNA. Because Pax-5 might be a potential candidate accounting for the observed defect (see below), PCR product encompassing the entire coding region (1,218 bp) was cloned and sequenced, using two external and three internal primers as indicated in Methods. Three independent clones failed to reveal any difference with the Pax-5 coding region previously reported (32).

Discussion

In this paper, we report the case of a young girl suffering a complete agammaglobulinemia with total absence of peripheral B cells, and normal T and myeloid compartments, thus resembling the phenotypic pattern of XLA. However, this syndrome may be eliminated for several reasons: (a) the patient is a girl born to first cousin healthy parents; (b) a normal 46XX karyotype was observed both in the blood and bone marrow of the patient, excluding the possibility of a Turner syndrome or an X-autosome translocation; and (c) the patient's mother was not an XLA carrier and therefore this case cannot result from

not due to an alteration of Rag-1 nor Rag-2, since the T compartment was normal. Nevertheless, a mutation that would affect the control of Rag transcription solely in the B lineage could be invoked, as this was reported to be the case for the E2A^{-/-} phenotype (33). In the second group, which included E2A, CD10, Syk, Pax-5, CD19, Ig α , Ig β , μ_0 , I μ , V_H-C μ , I κ , and V κ -C κ , gene expression was severely impaired. As expression of these genes extends beyond the preB stage, the lower level of transcripts is most simply explained by the absence of more mature cells. The precise step of differentiation which is directly affected by the defect must be very close to the onset of transcription of these genes. In this regard, several genes must be critically analyzed. The presence of λ -like, VpreB, Rag-1 and Rag-2 transcripts in the patient rules out E2A defect, which was shown to severely impair transcription of these genes in the mouse (33). The phenotype that results from gene targeting of Ig β is close to that of the patient in that blockage arises at the proB stage. However, its implication appears unlikely in our case, since in Ig β ^{-/-} mice V_H-D-J_H occurs, although with a low efficiency, and the level of Ig α transcription remains normal (45). Gene targeting of CD19 did not affect B cell differentiation until the immature B lymphocyte stage (46), making it unlikely a direct defect of this gene in the patient. Among factors that control CD19 expression, Pax-5 transcription factor has been shown to be clearly involved (47). Binding sites for Pax-5 have been also identified in the promoters of other B specific genes such as λ -like/ λ 5, VpreB, Blk, and at multiple sites within the IgH locus (48). The very low level of CD19 transcription, the strong impairment in Ig gene rearrangements, and the presence of normal levels of λ -like and VpreB transcripts were reminiscent of the phenotype reported in Pax-5^{-/-} mice (29, 49) and therefore made the Pax-5 gene the most likely candidate to date (Fig. 3). However, sequencing of the coding portion of the cDNA did not differ from the previously reported sequence, thus leaving the definitive answer with a question mark. Using a molecular genetic approach of primary immune deficiencies that may be similar to our case, Vorechovsky et al. concluded that involvement of the coding portion of the Pax-5 gene was unlikely (41). However, implication of Pax-5 cannot be definitively ruled out, either directly through a mutation in the regulatory boxes of this gene, or by a defect of a gene encoding a factor regulating the Pax-5 gene. It should be recalled that Pax-5 also drives important steps of development in the posterior midbrain and anterior cerebellum in the mouse (29). The patient had no evidence of such a syndrome, but this might be explained by the redundancy in the Pax gene family, Pax-2 being expressed in the central nervous system (50).

Therefore, this new non-XLA primary immunodeficiency provides a potential model to attempt elucidation of very early stages of human B cell differentiation.

Acknowledgments

The technical expertise of E. Termine (oligonucleotide synthesis), N. Brun-Roubereau and M. Barad (cytofluorometry), and C. Beziers-Lafosse (artwork) is greatly acknowledged.

This work was supported by CNRS (Centre National de la Recherche Scientifique), INSERM (Institut National de la Santé et de la Recherche Médicale), IUF (Institut Universitaire de France), ARC (Association de Recherche contre le Cancer), and Ministère de la Recherche et de l'Enseignement Supérieur.

References

1. Uckun, F.M., and J.A. Ledbetter. 1988. Immunobiologic differences between normal and leukemic human B-cell precursors. *Proc. Natl. Acad. Sci. USA.* 85:8603–8607.
2. Wormann, B., J.M. Anderson, J.A. Liberty, K. Galz-Peczalska, R.D. Brunning, T.L. Silberman, D.C. Arthur, and T.W. LeBien. 1989. Establishment of a leukemic cell model for studying human pre-B to B cell differentiation. *J. Immunol.* 142:110–117.
3. Alt, F.W., T.K. Blackwell, R.A. De Pinho, M.G. Reth, and M.D. Yancopoulos. 1986. Regulation of genome rearrangement events during lymphocyte differentiation. *Immunol. Rev.* 89:5–30.
4. Blackwell, T.K., and F.W. Alt. 1989. Mechanism and developmental program of immunoglobulin gene rearrangement in mammals. *Annu. Rev. Genet.* 23:605–636.
5. Dorshkind, K. 1994. Transcriptional control points during lymphopoiesis. *Cell.* 79:751–753.
6. Kerr, W.G., M.D. Cooper, L. Feng, P.D. Burrows, and L.M. Hendershot. 1989. μ heavy chains can associate with a pseudo light chain complex (Ψ L) in human pre-B cell lines. *Int. Immunol.* 1:355–361.
7. Hollis, G.F., G.A. Evans, J.M. Stafford-Hollis, S.J. Korsmeyer, and J.P. McKearn. 1989. Immunoglobulin λ light chain related genes 14.1 and 16.1 are expressed in pre-B cells and may encode the human immunoglobulin Ω light chain protein. *Proc. Natl. Acad. Sci. USA.* 86:5552–5556.
8. Bossy, D., M. Milili, J. Zucman, G. Thomas, M. Fougereau, and C. Schiff. 1991. Organisation and expression of the λ -like genes that contribute to the μ - Ψ light chain complex in human pre-B cells. *Int. Immunol.* 3:1081–1090.
9. Sakaguchi, N., and F. Melchers. 1986. λ 5, a new light chain related locus selectively expressed in pre-B lymphocytes. *Nature (Lond.)* 324:579–582.
10. Kudo, A., N. Sakaguchi, and F. Melchers. 1987. Organization of the murine Ig-related λ 5 gene transcribed selectively in pre-B lymphocytes. *EMBO (Eur. Mol. Biol. Organ.) J.* 6:103–107.
11. Bauer, S.R., A. Kudo, and F. Melchers. 1988. Structure and preB lymphocyte restricted expression of the VpreB gene in humans and conservation of its structure in other mammalian species. *EMBO (Eur. Mol. Biol. Organ.) J.* 7:111–116.
12. Karasuyama, H., A. Rolink, Y. Shinkai, F. Young, F.W. Alt, and F. Melchers. 1994. The expression of V_{pre-B}/lambda5 surrogate light chain in early bone marrow precursor B cells of normal and B cell-deficient mutant mice. *Cell.* 77:133–143.
13. Winkler, T.H., A. Rolink, F. Melchers, and H. Karasuyama. 1995. Precursor B cells of mouse bone marrow express two different complexes with the surrogate light chain on the surface. *Eur. J. Immunol.* 25:446–450.
14. Guelpa-Fonlupt, V., C. Tonnelde, D. Blaise, M. Fougereau, and F. Fumoux. 1994. Discrete early pro-B and pre-B stages in normal human bone marrow as defined by surface pseudo-light chain expression. *Eur. J. Immunol.* 24:257–264.
15. Nishimoto, N., H. Kubagawa, T. Ohno, G.L. Gartland, A.K. Stankovic, and M.D. Cooper. 1991. Normal pre-B cells express a receptor complex of μ heavy chains and surrogate light-chain proteins. *Proc. Natl. Acad. Sci. USA.* 88:6284–6288.
16. Lassoued, K., C.A. Nunez, L. Billips, H. Kubagawa, R.C. Monteiro, T.W. LeBien, and M.D. Cooper. 1993. Expression of surrogate light chain receptors is restricted to a late stage in pre-B cell differentiation. *Cell.* 73:73–86.
17. Bossy, D., J. Salamero, D. Olive, M. Fougereau, and C. Schiff. 1993. Structure, biosynthesis and transduction properties of the human μ - Ψ L complex: similar behavior of preB and intermediate preB-B cells in transducing ability. *Int. Immunol.* 5:467–478.
18. Nunez, C., N. Nishimoto, G.L. Gartland, L.G. Billips, P.D. Burrows, H. Kubagawa, and M.D. Cooper. 1996. B cells are generated throughout life in humans. *J. Immunol.* 156:866–872.
19. Campbell, K.S., E.J. Hager, R.J. Friedrich, and J.C. Cambier. 1991. IgM antigen receptor complex contains phosphoprotein products of B29 and *mb-1* genes. *Proc. Natl. Acad. Sci. USA.* 88:3982–3986.
20. Sakaguchi, N., S. Kashiwamura, M. Kimoto, P. Thalmann, and F. Melchers. 1988. B lymphocyte lineage-restricted expression of *mb-1*, a gene with CD3-like structural properties. *EMBO (Eur. Mol. Biol. Organ.) J.* 7:3457–3464.
21. Hermanson, G.G., D. Eisenberg, P.W. Kincade, and R. Wall. 1988. B29: a member of the immunoglobulin gene superfamily exclusively expressed on beta-lineage cells. *Proc. Natl. Acad. Sci. USA.* 85:6890–6894.
22. Meffre, E., M. Fougereau, J.-N. Argenson, J.-M. Aubaniac, and C. Schiff. 1996. Cell surface expression of surrogate light chain (Ψ L) in the absence of μ on human proB cell lines and normal proB cells. *Eur. J. Immunol.* In press.
23. Conley, M.E. 1985. B cells in patients with X-linked agammaglobulinemia. *J. Immunol.* 134:3070–3074.
24. Vetrie, D., I. Vorechovsky, P. Sideras, J. Holland, A. Davies, F. Flintner, L. Hammarström, C. Kinnon, R. Levinsky, M. Bobrow, C.I.E. Smith, and D.R. Bentley. 1993. The gene involved in X-linked agammaglobulinemia is a member of the src family of protein-tyrosine kinases. *Nature (Lond.)* 361:226–233.
25. Tsukada, S., D.C. Saffran, D.J. Rawlings, O. Parolini, R. Cutler Allen, I.

- Klisak, R.S. Sparkes, H. Kubagawa, T. Mohandas, S. Quan, et al. 1993. Deficient expression of a B cell cytoplasmic tyrosine kinase in human X-linked agammaglobulinemia. *Cell* 72:279–290.
26. Milili, M., F. Le Deist, G. De Saint-Basile, A. Fischer, M. Fougereau, and C. Schiff. 1993. Bone marrow cells in X-linked agammaglobulinemia express pre-B-specific genes (lambda-like and V pre-B) and present immunoglobulin V-D-J gene usage strongly biased to a fetal-like repertoire. *J. Clin. Invest.* 91:1616–1629.
27. Conley, M.E., and S.K. Sweinberg. 1992. Females with a disorder phenotypically identical to X-linked agammaglobulinemia. *J. Clin. Immunol.* 12: 139–143.
28. De la Morena, M., R.N. Haire, Y. Ohta, R.P. Nelson, R.T. Litman, N.K. Day, R.A. Good, and G.W. Litman. 1995. Predominance of sterile immunoglobulin transcripts in a female phenotypically resembling Bruton's agammaglobulinemia. *Eur. J. Immunol.* 25:809–815.
29. Urbanek, P., Z.-Q. Wang, I. Fetka, E.F. Wagner, and M. Busslinger. 1994. Complete block of early B cell differentiation and altered patterning of the posterior midbrain in mice lacking Pax5/BSAP. *Cell* 79:901–912.
30. Allen, R.C., H.Y. Zoghbi, A.B. Moseley, H.M. Rosenblatt, and J.W. Belmont. 1992. Methylation of *HpaII* and *HhaI* sites near the polymorphic CAG repeat in the human androgen-receptor gene correlates with X chromosome inactivation. *Am. J. Hum. Genet.* 51:1229–1239.
31. Le Deist, F., G. Thoenes, J. Corado, B. Lisowska-Grosppierre, and A. Fischer. 1991. Immunodeficiency with low expression of the T cell receptor/CD3 complex: effect on T lymphocytes activation. *Eur. J. Immunol.* 21:1641–1647.
32. Adams, B., P. Dörfler, A. Aguzzi, Z. Kozmik, P. Urbanek, I. Maurer-Fogy, and M. Busslinger. 1992. Pax-5 encodes the transcription factor BSAP and is expressed in B lymphocytes, the developing CNS, and adult testis. *Genes Dev.* 6:1589–1607.
33. Zhuang, Y., P. Soriano, and H. Weintraub. 1994. The helix-loop-helix gene E2A is required for B cell formation. *Cell* 79:875–884.
34. Sun, X.-H. 1994. Constitutive expression of the *Id1* gene impairs mouse B cell development. *Cell* 79:893–900.
35. Peschon, J.J., P.J. Morrissey, K.H. Grabstein, F.J. Ramsdell, E. Maraskovsky, B.C. Gliniak, L.S. Park, S.F. Ziegler, D.E. Williams, C.B. Ware, et al. 1994. Early lymphocyte expansion is severely impaired in interleukin 7 receptor-deficient mice. *J. Exp. Med.* 180:1955–1960.
36. De Weers, M., M.C.M. Verschuren, M.E.M. Kraakman, R.G.J. Mensink, R.K.B. Schuurman, J.J.M. Van Dongen, and R.W. Hendriks. 1993. The Bruton's tyrosine kinase gene is expressed throughout B cell differentiation, from early precursor B cell stages preceding immunoglobulin gene rearrangement up to mature B cell stages. *Eur. J. Immunol.* 23:3109–3114.
37. Turner, M., P.J. Mee, P.S. Costello, O. Williams, A.A. Price, L.P. Duddy, M.T. Furlong, R.L. Geahlen, and V.L.J. Tybulewicz. 1995. Perinatal lethality and blocked B-cell development in mice lacking the tyrosine kinase Syk. *Nature (Lond.)* 378:298–302.
38. Neale, G.A.M., and G.R. Kitchingman. 1991. mRNA transcripts initiating within the human immunoglobulin mu heavy chain enhancer region contain a non-translatable exon and are extremely heterogeneous at the 5' end. *Nucleic Acids Res.* 19:2427–2433.
39. Thompson, A., E. Timmers, M.J.H. Kenter, M.E.M. Kraakman, R.W. Hendriks, and R.K.B. Schuurman. 1992. Immunoglobulin kappa light chain germ-line transcripts in human precursor B lymphocytes. *Eur. J. Immunol.* 22: 3167–3171.
40. Thompson, A., E. Timmers, R.K.B. Schuurman, and R.W. Hendriks. 1995. Immunoglobulin heavy chain germ-line J_H - C_μ transcription in human precursor B lymphocytes initiates in a unique region upstream of DQ52. *Eur. J. Immunol.* 25:257–261.
41. Vorechovsky, I., S. Koskinen, R. Paganelli, C.I.E. Smith, M. Busslinger, and L. Hammarström. 1995. The Pax5 gene: a linkage and mutation analysis in candidate human primary immunodeficiencies. *Immunogenetics* 42:149–152.
42. Campana, D., J. Farrant, N. Inamdar, A.D.B. Webster, and G. Janossy. 1990. Phenotypic features and proliferative activity of B cell progenitors in X-linked agammaglobulinemia. *J. Immunol.* 145:1675–1680.
43. Khan, W.N., F.W. Alt, R.M. Gerstein, B.A. Malynn, I. Larsson, G. Rathbun, L. Davidson, S. Müller, A.B. Kantor, L.A. Herzenberg, et al. 1995. Defective B cell development and function in Btk-deficient mice. *Immunity* 3:283–299.
44. Kerner, J.D., M.W. Appleby, R.N. Mohr, S. Chien, D.J. Rawlings, C.R. Maliszewski, O.N. Witte, and R.M. Perlmutter. 1995. Impaired expansion of mouse B cell progenitors lacking Btk. *Immunity* 3:301–312.
45. Gong, S., and M.C. Nussenzweig. 1996. Regulation of an early developmental checkpoint in the B cell pathway by Ig β . *Science (Wash. DC)* 272:411–414.
46. Engel, P., L.-J. Zhou, D.C. Ord, S. Sato, B. Koller, and T.F. Tedder. 1995. Abnormal B lymphocyte development, activation, and differentiation in mice that lack or overexpress the CD19 signal transduction molecule. *Immunity* 3:39–50.
47. Kozmik, Z., S. Wang, P. Dörfler, B. Adams, and M. Busslinger. 1992. The promoter of the CD19 gene is a target for the B-cell-specific transcription factor BSAP. *Mol. Cell. Biol.* 12:2662–2672.
48. Baker, S.J., and E.P. Reddy. 1995. B cell differentiation: role of E2A and Pax5/BSAP transcription factors. *Oncogene* 11:413–426.
49. Busslinger, M., and P. Urbanek. 1995. The role of BSAP (Pax-5) in B-cell development. *Curr. Opin. Genet. Dev.* 5:595–601.
50. Sanyanusin, P., L.A. Schimmenti, L.A. McNoe, T.A. Ward, M.-E.M. Pierpont, M.J. Sullivan, W.B. Dobyns, and M.R. Eccles. 1995. Mutation of the Pax2 gene in a family with optic nerve colobomas, renal anomalies and vesicoureteral reflux. *Nat. Genet.* 9:358–364.
51. Li, Y.-S., K. Hayakawa, and R.R. Hardy. 1993. The regulated expression of B lineage associated genes during B cell differentiation in bone marrow and fetal liver. *J. Exp. Med.* 178:951–960.
52. ten Boekel, E., F. Melchers, and A. Rolink. 1995. The status of Ig loci rearrangements in single cells from different stages of B cell development. *Int. Immunol.* 7:1013–1019.
53. Grawunder, U., T.M. J. Leu, D.G. Schatz, A. Werner, A.G. Rolink, F. Melchers, and T.H. Winkler. 1995. Down-regulation of RAG1 and RAG2 gene expression in preB cells after functional immunoglobulin heavy chain rearrangement. *Immunity* 3:601–608.
54. Kitamura, D., A. Kudo, S. Schaal, W. Müller, F. Melchers, and K. Rajewsky. 1992. A critical role of lambda5 protein in B cell development. *Cell* 69: 823–831.