

Transcription factors SOHLH1 and SOHLH2 coordinate oocyte differentiation without affecting meiosis I

Yong-Hyun Shin,¹ Yu Ren,¹ Hitomi Suzuki,² Kayla J. Golnoski,¹ Hyo won Ahn,¹ Vasil Mico,¹ and Aleksandar Rajkovic^{1,3,4}

¹Magee-Womens Research Institute, Department of Obstetrics, Gynecology and Reproductive Sciences, University of Pittsburgh, Pittsburgh, Pennsylvania, USA. ²Department of Experimental Animal Models for Human Disease, Graduate School of Medical and Dental Sciences, Tokyo Medical and Dental University, Tokyo, Japan. ³Department of Human Genetics, and ⁴Department of Pathology, University of Pittsburgh, Pittsburgh, Pennsylvania, USA.

Following migration of primordial germ cells to the genital ridge, oogonia undergo several rounds of mitotic division and enter meiosis at approximately E13.5. Most oocytes arrest in the dictyate (diplotene) stage of meiosis circa E18.5. The genes necessary to drive oocyte differentiation in parallel with meiosis are unknown. Here, we have investigated whether expression of spermatogenesis and oogenesis bHLH transcription factor 1 (*Sohlh1*) and *Sohlh2* coordinates oocyte differentiation within the embryonic ovary. We found that SOHLH2 protein was expressed in the mouse germline as early as E12.5 and preceded SOHLH1 protein expression, which occurred circa E15.5. SOHLH1 protein appearance at E15.5 correlated with SOHLH2 translocation from the cytoplasm into the nucleus and was dependent on SOHLH1 expression. NOBOX oogenesis homeobox (NOBOX) and LIM homeobox protein 8 (LHX8), two important regulators of postnatal oogenesis, were coexpressed with SOHLH1. Single deficiency of *Sohlh1* or *Sohlh2* disrupted the expression of LHX8 and NOBOX in the embryonic gonad without affecting meiosis. *Sohlh1*-KO infertility was rescued by conditional expression of the *Sohlh1* transgene after the onset of meiosis. However, *Sohlh1* or *Sohlh2* transgene expression could not rescue *Sohlh2*-KO infertility due to a lack of *Sohlh1* or *Sohlh2* expression in rescued mice. Our results indicate that *Sohlh1* and *Sohlh2* are essential regulators of oocyte differentiation but do not affect meiosis I.

Introduction

In contrast to the sex-determining region Y-dependent (SRY-dependent) testis-determining system in early XY gonads, the molecular mechanisms behind XX female gonadal fate are poorly understood. Unlike male germ cells, in which differentiation culminates in meiosis, the oocyte is a unique multitasker, with meiosis and oocyte differentiation proceeding alongside each other. The somatic component plays an important role in XX determination, just as it does in well-characterized XY gonadal differentiation, and forkhead box L2 (*Foxl2*) expression circa E12 is an important determinant of granulosa cell differentiation and oocyte maintenance (1). However, little is understood regarding oocyte differentiation outside of the somatic sphere of influence.

Previous studies have discovered a group of transcription factors that play a crucial role in postnatal oocyte differentiation; these include spermatogenesis and oogenesis bHLH transcription factor 1 (*Sohlh1*) (2), *Sohlh2* (3, 4), LIM homeobox protein (*Lhx8*) (5, 6), NOBOX oogenesis homeobox (*Nobox*) (7), and folliculogenesis-specific basic helix-loop-helix (*Figla*) (8) genes. *Sohlh1* and *Sohlh2* are expressed preferentially in the male and female germline and are critical for male and female germline develop-

ment. *Lhx8*, *Nobox*, and *Figla* are mainly expressed in the female germline, and their KOs disrupt only ovarian development, without affecting male germline differentiation. The postnatal phenotypes in ovaries deficient in these transcriptional regulators share many similarities: embryonic gonads look relatively unaffected on gross histology and oocyte counts, and newborn ovaries are similarly unaffected. Within the first few days of postnatal life, the histology reveals significant disruption in follicle formation, with ensuing oocyte death within a few weeks. However, it is clear from ultrastructural studies of embryonic *Nobox*-deficient gonads that anatomic abnormalities, such as deficient formation of somatic cell projections, commence as early as E16.5 (7). We therefore focused our studies on the prenatal regulation of oocyte differentiation by oocyte-specific transcriptional regulators. Here, we show that SOHLH1 and SOHLH2 protein expression commence in the embryonic gonad and that *Sohlh1* and *Sohlh2* gene deficiency disrupts embryonic expression of the oocyte differentiation factors NOBOX and LHX8, without an appreciable effect on meiosis I. We conclude that *Sohlh1* and *Sohlh2* are critical genes in oocyte differentiation, independent of meiosis. Together with findings from previous studies (9), these results indicate that *Sohlh1* and *Sohlh2* genes are universal regulators of both male and female germline differentiation, with distinct and sex-specific downstream pathways.

Results

SOHLH2 nucleocytoplasmic translocation is dependent on SOHLH1 expression. Little is known regarding embryonic expression of

► Related Commentary: p. 2044

Conflict of interest: The authors have declared that no conflict of interest exists.

Submitted: August 22, 2016; **Accepted:** March 7, 2017.

Reference information: *J Clin Invest.* 2017;127(6):2106–2117.

<https://doi.org/10.1172/JCI90281>.

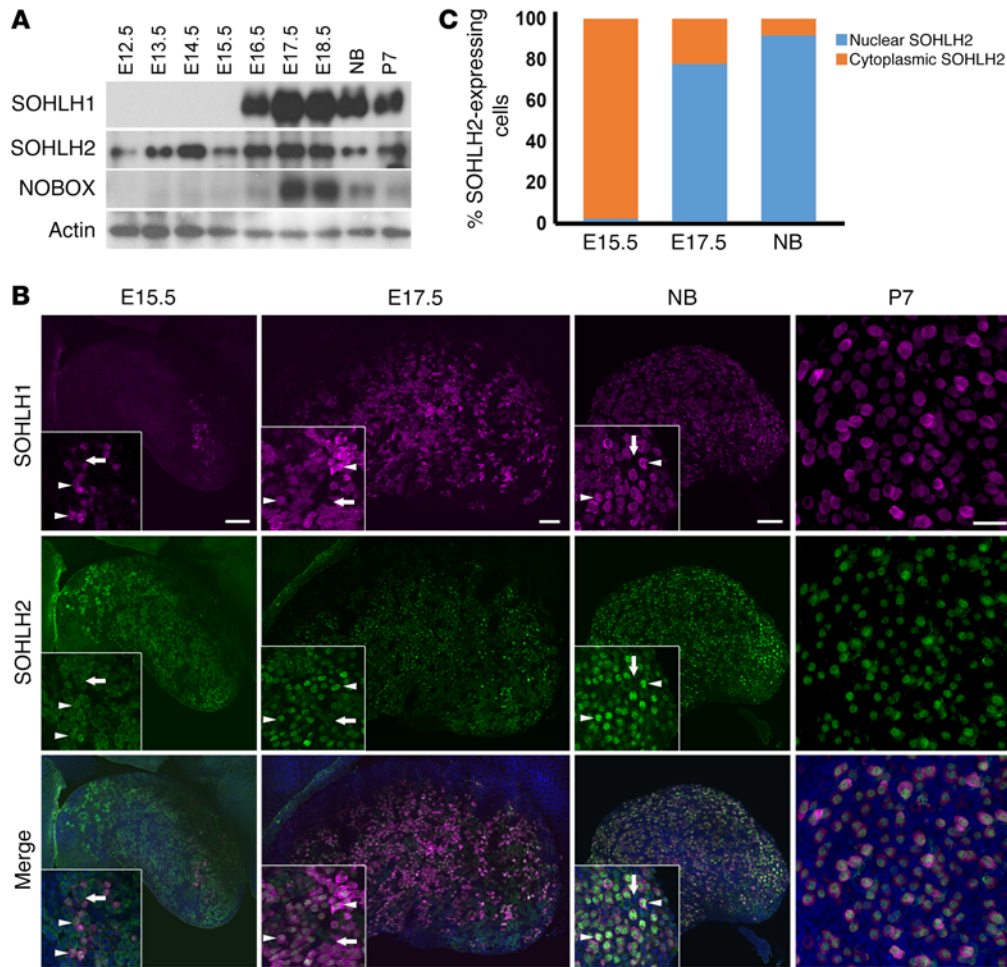


Figure 1. Expression of SOHLH2 and SOHLH1 during embryonic development. (A) Western blot analysis of protein extracts from embryonic (E12.5–E18.5), newborn (NB), and P7 ovaries. Affinity-purified polyclonal antibodies were used to detect SOHLH1, SOHLH2, NOBOX, and actin expression ($n = 3$ per group). (B) Whole-mount immunofluorescence staining with SOHLH1 (magenta) and SOHLH2 (green) in ovaries at E15.5, E17.5, the newborn (NB) stage, and P7. White arrows indicate oocytes that lack SOHLH1 expression and show SOHLH2 localization to the cytoplasm, while white arrowheads indicate oocytes expressing both SOHLH1 and SOHLH2 ($n = 3$ per group). Scale bars: 100 μm . Original magnification: $\times 40$. (C) Quantitation of SOHLH2-expressing cells showing nuclear or cytoplasmic localization ($n = 3$ per group). Data are representative of at least 3 independent experiments.

SOHLH1, SOHLH2, LHX8, and NOBOX in embryonic gonads. We evaluated the expression of these proteins at different developmental stages of the ovary, using immunofluorescence and Western blotting. SOHLH2 was expressed as early as E12.5, prior to oocyte entry into meiosis (Figure 1A), and preceded SOHLH1 expression. NOBOX protein and RNA expression had an onset similar to that for SOHLH1 expression in the embryonic ovaries (Figure 1A and Supplemental Figure 1; supplemental material available online with this article; <https://doi.org/10.1172/JCI90281DS1>). Interestingly, SOHLH2 expression circa E15.5 and earlier was exclusively cytoplasmic (Figure 1, B and C). We did not detect SOHLH1 expression at E12.5 by immunofluorescence or by composite data derived from the NCBI's Gene Expression Omnibus (GEO) profiles on embryonic ovarian RNA expression (Supplemental Figure 1). At E15.5, oocytes had entered the zygotene stage of meiosis I. At this time, a small subset of oocytes expressed the SOHLH1 protein, which was located in both the cytoplasm and the nucleus (Figure 1B). Western blot-

ting did not detect SOHLH1 at E15.5 (Figure 1A), while immunofluorescence did, perhaps due to epitope conformation or sensitivity. In oocytes that expressed SOHLH1 at E15.5, we found that SOHLH2 expression was mostly confined to the nucleus (Figure 1, B and C). At E17.5 and beyond, 80% of germ cells coexpressed SOHLH1 and SOHLH2, with SOHLH2 expression mainly confined to the nucleus, while SOHLH1 expression was detected in both the nucleus and cytoplasm (Figure 1, B and C). We found that SOHLH2 translocation from the cytoplasm to the nucleus was closely associated with expression of SOHLH1. SOHLH1 and SOHLH2 proteins were also coexpressed postnatally and were detectable mainly in the oocytes of primordial follicles and a few primary follicles (Figure 1, B and C) (4, 5). Western blotting did not detect SOHLH1 protein in *Sohlh2*-KO ovaries, while SOHLH2 expression persisted in *Sohlh1*-KO ovaries (Figure 2A). The Western blot results are consistent with SOHLH2 expression being upstream of SOHLH1. We also assessed whether SOHLH2 localization is disrupted in *Sohlh1*-deficient embryonic ovaries.

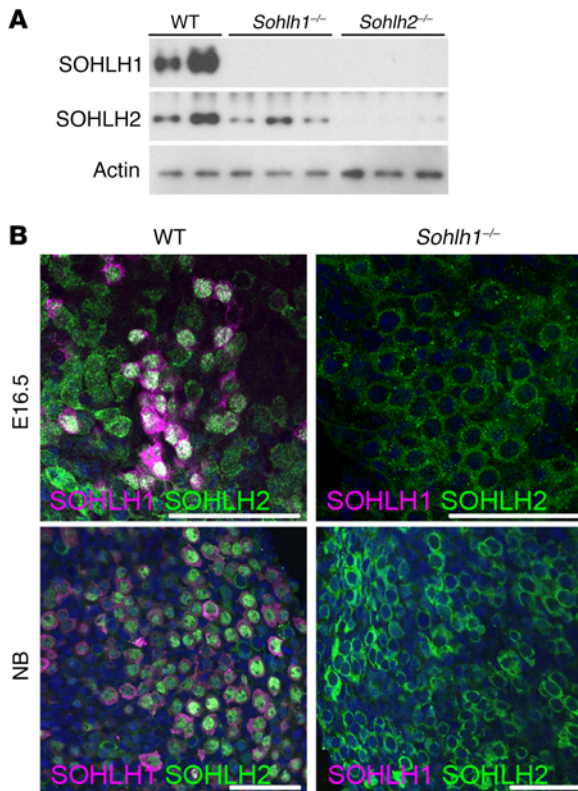


Figure 2. *Sohlh1* deficiency disrupts SOHLH2 cellular localization. (A) Western blot of proteins extracted from newborn ovaries show a lack of expression of SOHLH1 and SOHLH2 in *Sohlh2*^{-/-} ovaries and the presence of SOHLH2 in *Sohlh1*^{-/-} ovaries ($n = 3$ per group). (B) Immunofluorescence staining with anti-SOHLH1 (magenta) and anti-SOHLH2 (green) antibodies in E16.5 and newborn ovaries. At both time points, SOHLH1-deficient oocytes did not express SOHLH2 in the nucleus ($n = 3$ per group). DNA was stained with DAPI (blue). Data are representative of at least 3 independent experiments. Scale bars: 50 μm .

Immunofluorescence staining with anti-SOHLH1 and anti-SOHLH2 antibodies on ovaries derived from E16.5 and newborn (E19.5) *Sohlh1*-deficient animals showed that *Sohlh1* deficiency abrogated SOHLH2 translocation into the nucleus (Figure 2B). These results further indicate that SOHLH2 nuclear localization is dependent on SOHLH1 expression.

SOHLH1 and SOHLH2 regulate oocyte growth and differentiation. SOHLH1 and SOHLH2 proteins are known to interact in vivo, and we hypothesized that complete elimination of SOHLH1 and SOHLH2 proteins from the ovaries may cause a more severe developmental defect than would single deficiency (9, 10). We generated *Sohlh1/Sohlh2* double-deficiency mice (referred to hereafter as S1/2DKO mice) to investigate the effects of combined deficiency on oogenesis. Mice with loss of both *Sohlh1* and *Sohlh2* in their ovaries showed no histomorphological differences when compared with single-deficiency *Sohlh1* and *Sohlh2* mice, and both combined and single-deficiency ovaries were substantially smaller when compared with WT ovaries (Figure 3). In newborn mice, we found that *Sohlh1*- or *Sohlh2* single- or double-KO ovarian histology was no different from that of WT littermates (Figure 3, A–D). *Sohlh1* or *Sohlh2* single-KO ovaries, as well as S1/2DKO ovaries, have remarkably diminished primordial and primary follicles when compared with 1- and 2-week-old WT littermates (Figure 3, E–L) and lose the vast majority of oocytes by the time they reach reproductive maturity at approximately 7 weeks of age (Figure 3, M–P).

Given that *Sohlh1*-KO, *Sohlh2*-KO, and S1/2DKO phenotypes are histologically identical despite a different onset of their embryonic expression (4), that SOHLH2 protein precedes SOHLH1 expression, and that SOHLH2 protein translocation to

the nucleus is associated with the appearance of SOHLH1 expression circa E15.5, we further tested the hypothesis that the phenotypes observed in *Sohlh2*-deficient ovaries are solely due to the disruption of SOHLH1 expression. If this is the case, then activating *Sohlh1* expression in *Sohlh2*-KOs may rescue the *Sohlh2*-KO phenotype and lead to normal oogenesis. To address this question, we engineered a transgenic mouse that expresses *Sohlh1-mCherry* under the CMV early enhancer–chicken β -actin hybrid (CAG) promoter, when *Cre*-mediated excision removes the chloramphenicol acetyltransferase (*CAT*) gene, which lies between the CAG promoter and *Sohlh1* (Supplemental Figure 2) (11). We labeled this conditional *Sohlh1*-expressing construct *CCS1*. We used DEAD (Asp–Glu–Ala–Asp) box polypeptide–*Cre* (*Ddx4-Cre*) (12), whose expression commences between E15.5 and E18.5, after the onset of meiosis, to activate *Sohlh1* expression within superoxide dismutase copper chaperone (*CCS1*). Moreover, we found that *Sohlh1* and *Sohlh2* deficiencies did not suppress *DDX4* protein expression (Supplemental Figure 3); therefore, *Ddx4* promoter-driven *Cre* will be expressed in the background of *Sohlh1*- and *Sohlh2*-deficient ovaries. *Ddx4-Cre*-driven expression of *Sohlh1* from the *CCS1* transgene rescued ovarian development and fertility in *Sohlh1*-KOs (Figure 4A). The expression of *mCherry* and growth differentiation factor 9 (*Gdf9*) RNA in the *CCS1 Sohlh1*^{-/-} ovary indicated successful expression of the *Sohlh1-mCherry* transgene in *Sohlh1*^{-/-} mice (Figure 4B). Moreover, SOHLH2 expression in the *CCS1 Sohlh1*^{-/-} animals was now shifted from the cytoplasm to the nucleus (Supplemental Figure 4). These rescue results are consistent with the appearance of *Sohlh1* circa E15.5 and indicate that *Sohlh1* does not play a critical role prior to the formation of the embryonic gonad. These results also indicate that *Sohlh1* is not essential for meiosis, as meiosis commences around E13.5.

We then assessed whether *Sohlh1* expression on the *Sohlh2*-KO background can rescue ovarian development. We assessed fertility parameters such as pups per litter over a 10-month period and performed histomorphometric analyses to determine the presence and types of follicles from 5 pairs of ovaries per genotype (Figure 4, A and C). *Sohlh1* expression under the control of *Ddx4-Cre* did not rescue *Sohlh2*-KO mice (Figure 4A), despite positive expression of *Sohlh1*, as evidenced by the presence of the *mCherry* transcript (Figure 4B). These results indicate that genes other than *Sohlh1* are important for *Sohlh2* downstream effects or that SOHLH2 expression (absent in the rescue) and heterodimerization (9) with SOHLH1 protein are essential steps for downstream effects and rescue.

We also attempted to rescue the *Sohlh2*-KO using the *Sohlh2* transgene, whose expression is driven by a floxed CAG promoter (*CCS2* transgene line, identical to *CCS1*, except for *Sohlh2* expres-

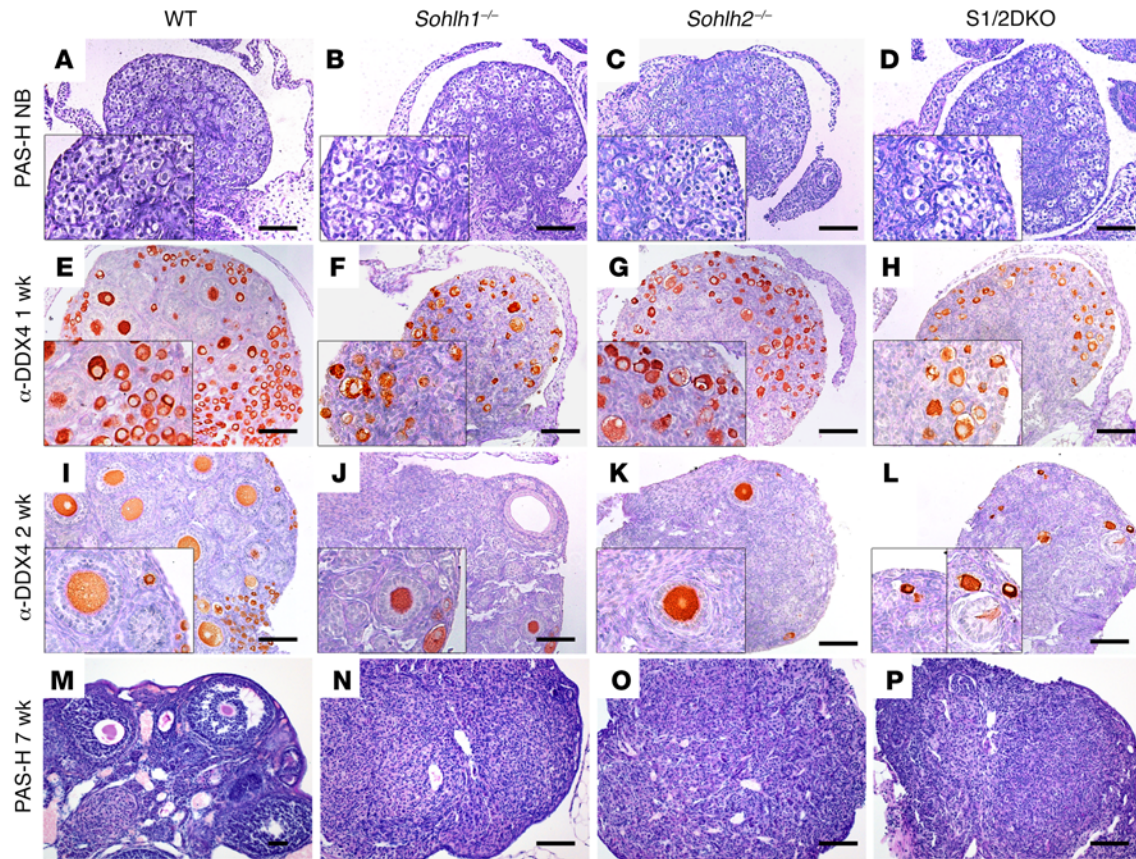


Figure 3. *Sohlh1* and *Sohlh2* double deficiency disrupts folliculogenesis similarly to single deficiency of *Sohlh1* or *Sohlh2*. (A–P) PAS staining of newborn ovaries. Ovarian phenotype of WT, *Sohlh1*^{-/-}, *Sohlh2*^{-/-}, and S1/2DKO mice at the indicated stages of postnatal ovarian development. (E–L) IHC with anti-DDX4 antibody in ovaries harvested from 1- and 2-week-old mice. (M–P) PAS staining of 7-week-old ovaries for the indicated genotypes ($n = 3$ per group). Data are representative of at least 3 independent experiments. Scale bars: 100 μ m. Original magnification: $\times 40$. PAS-H, periodic acid-Schiff-hematoxylin.

sion). The *CCS2* transgene in the presence of *Ddx4-Cre* and on the background of *Sohlh2*-KO (*CCS2 Sohlh2*^{-/-}) did not rescue *Sohlh2*-KOs (Figure 5A), unlike the ability of *CCS1* to rescue *Sohlh1*-KOs at the same time point (E15.5). One explanation is that, in the *Sohlh1*-KO rescue with *CCS1*, there is an ongoing expression of *Sohlh2*, which allows for SOHLH1:SOHLH2 heterodimers to form and for oogenesis to proceed. In the *Sohlh2*-KO, even with *Sohlh2* rescue with the *CCS2* transgene, the expression of *Sohlh1* was not restored (Figure 5, B–D), and SOHLH2:SOHLH1 heterodimers were not formed. The lack of *Sohlh1* re-expression in *CCS2 Sohlh2*^{-/-} mice is probably why the fertility of *Sohlh2*^{-/-} mice was not rescued.

We also wanted to test the hypothesis that *Sohlh1*-KO rescue will occur when *Sohlh1* is expressed postnatally. We used *Gdf9-Cre* to induce *Sohlh1* expression in *CCS1 Sohlh1*^{-/-} mice. *Gdf9-Cre* expression commences on P3 in oocytes of primordial follicles (13). To our surprise, *CCS1 Sohlh1*^{-/-} mice had normal folliculogenesis and were fertile (Figure 6, A, B, D, and E). However, they had a significantly reduced primordial follicle pool size compared with that of WT mice, and expression of *Sohlh1*, *Sohlh2*, and *Gdf9* was partially rescued (Figure 6, C and F). Nonetheless, these data show that *Sohlh1*^{-/-} oocytes in newborn ovaries can be rescued and can be fertilized and produce offspring.

Oocyte-specific transcriptional regulator expression is dependent on Sohlh1 and Sohlh2. We hypothesized that the appearance of SOHLH1 around E15.5, with concomitant nuclear translocation of SOHLH2, correlates with the embryonic appearance of transcripts that encode genes essential for oocyte differentiation. Previous studies have shown that postnatal deficiency of SOHLH1 and SOHLH2 leads to downregulation of multiple oocyte-specific transcriptional regulators, including *Nobox*, *Figla*, KIT proto-oncogene receptor tyrosine kinase (*Kit*), and *Lhx8* (5, 14). We used publicly available GEO profiles of ovarian development to assess the expression of *Sohlh1*, which correlated very well with our experimental data, and chose *Sohlh1* profile neighbors. We discovered that *Nobox*, *Figla*, *Kit*, and *Lhx8* overlap *Sohlh1* expression (Supplemental Figure 1). Western blot analysis using anti-NOBOX antibodies followed the *Nobox* RNA GEO profile expression pattern and overlapped with SOHLH1 protein and RNA expression (Figure 1A and Supplemental Figure 1). We analyzed coexpression of SOHLH1, NOBOX, and LHX8 proteins in embryonic ovaries using immunofluorescence with affinity-purified antibodies against SOHLH1, NOBOX, and LHX8. A subset of oocytes within the E16.5 ovary expressed SOHLH1 protein, which was localized in both the nucleus and cytoplasm. We found that NOBOX and LHX8 expression commenced sole-

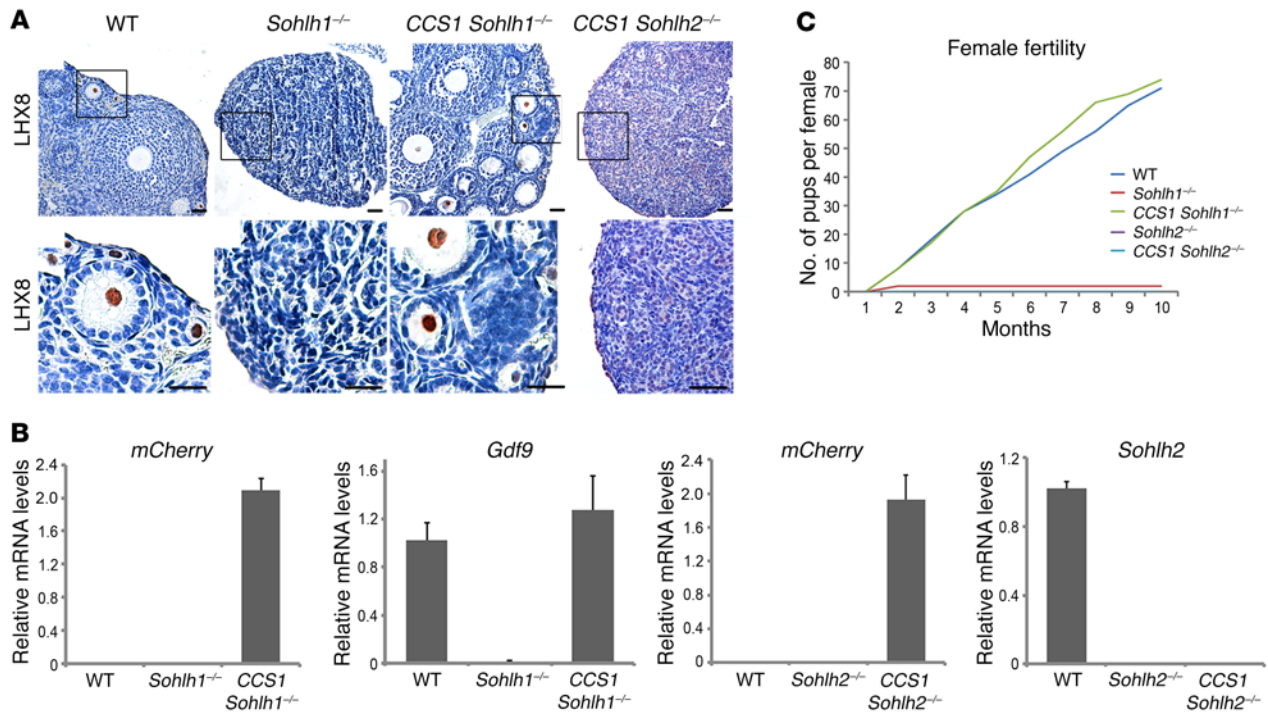


Figure 4. *Sohlh1* ectopic expression on the background of *Sohlh1*- and *Sohlh2*-deficient animals. (A) Conditional expression of *Sohlh1* from the *CCS1* transgene (Supplemental Figure 2) with the *Ddx4* promoter-driven Cre rescued the *Sohlh1*^{-/-} phenotype (*CCS1* *Sohlh1*^{-/-}) but not the *Sohlh2*^{-/-} phenotype (*CCS1* *Sohlh2*^{-/-}). Histology sections were stained with anti-LHX8 antibodies to identify oocyte nuclei ($n = 3$ per group). WT ovaries show various stages of folliculogenesis, while *Sohlh1*^{-/-} ovaries lack follicles beyond 3 weeks of postnatal life. Scale bars: 30 μ m. Black squares in the upper panel are magnified in the lower panel. Original magnification: $\times 40$. **(B)** RNA expression of *mCherry*, *Gdf9*, and *Sohlh2* from the ovaries of mice of various genotypes. *mCherry* expression shows that the *CAG* promoter in *CCS1* is active in the presence of *Ddx4*-Cre ($n = 6$ per group). Error bars indicate the mean \pm SD. **(C)** Fertility data (pups per female) for mice of various genotypes are plotted for a 10-month period ($n = 3$ per group). Data are representative of at least 3 independent experiments.

ly in SOHLH1-positive cells in E16.5 ovaries and that more than 90% of the oocytes in E17.5 and newborn ovaries coexpressed SOHLH1 together with LHX8 and NOBOX (Figure 7). These results are consistent with GEO profile expression data showing that essential transcriptional regulators are profile neighbors and are coexpressed in the same subset of germ cells.

We next examined whether NOBOX and LHX8 protein expression is dependent on SOHLH1 and SOHLH2 expression. In *Sohlh1*- and *Sohlh2*-deficient newborn ovaries, we found that expression of NOBOX and LHX8 was reduced but not abolished, as determined by immunofluorescence staining with specific antibodies (Figure 8). *Sohlh1* or *Sohlh2* single deficiency or S1/2DKO did not affect NOBOX or LHX8 intracellular localizations. However, we observed that LHX8 and NOBOX proteins did not colocalize in 52% and 58% of oocytes, respectively, in the embryonic gonad in either *Sohlh1* or *Sohlh2* single- or double-KOs (Figure 8, A and B). These results indicate that SOHLH1 and SOHLH2 are required for proper NOBOX and LHX8 expression and colocalization. We also investigated the expression of SOHLH1 protein in *Lhx8* global-KO animals (14). SOHLH1 expression was substantially diminished in *Lhx8*-deficient embryonic ovaries (Figure 8A). Moreover, *Sohlh1*, *Sohlh2*, and *Lhx8* individual deficiencies markedly downregulated the expression of *Kit*, a well-characterized receptor in germline differentiation (Supplemental Figure 3). All of these results indicate

that SOHLH1 and SOHLH2 and other oocyte-specific transcription factors are codependent on one another for their appropriate expression in the embryonic gonad (4, 5, 7, 14).

Sohlh1 and *Sohlh2* deficiencies do not disrupt meiosis I. Meiosis in mouse ovaries commences circa E13.5 and arrests in the diplotene stage before birth. By E16.5, most oocytes show zygotene and pachytene stages of meiosis, whereas at E18.5, pachytene and diplotene stages predominate. The substages of meiosis I prophase are defined by the following chromosome configurations and structures: pairing, which occurs during the leptotene and zygotene stages; synapsis, which is completed at the onset of the pachytene stage; and desynapsis, which occurs during the diplotene stage (15). Rapid oocyte loss occurs when meiosis I components are perturbed, as exemplified by KO models for mutS homolog 5 (*Msh5*) (16), REC8 meiotic recombination protein (*Rec8*) (17), and DNA meiotic recombinase 1 (*Dmcl1*) (18). SOHLH2 expression precedes SOHLH1 expression in the embryonic gonad and overlaps the initiation of meiosis I. SOHLH1 and SOHLH2 ovaries lose oocytes rapidly after birth, at the time when most oocytes have entered the diplotene stage of meiosis I. We studied whether gross perturbations in meiosis account for rapid oocyte loss in *Sohlh1*- and *Sohlh2*-deficient ovaries.

We performed RNA-sequencing (RNA-seq) on *Sohlh1* and *Sohlh2* single-KOs as well as on S1/2DKO newborn ovaries (Table 1) to assess the expression profiles of genes encoding well-char-

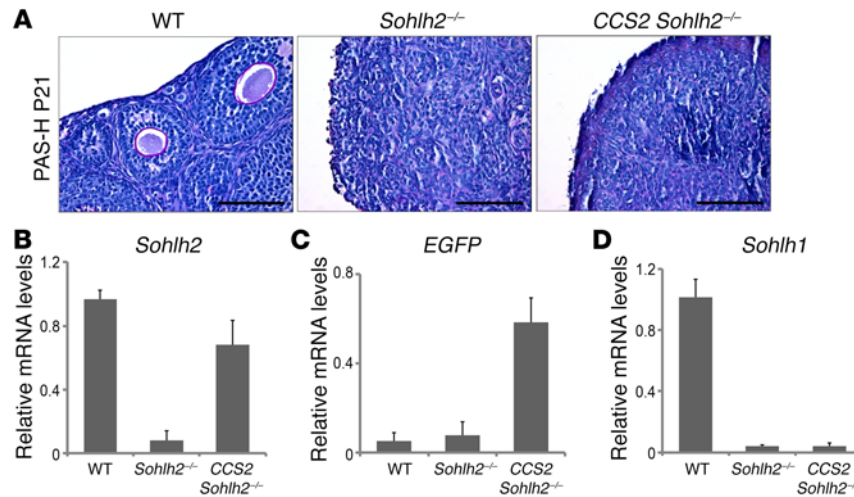


Figure 5. *Sohlh2* overexpression with *Ddx4* promoter-driven Cre fails to reverse the *Sohlh2*^{-/-} phenotype. (A) PAS staining of WT, *Sohlh2*^{-/-}, and *CCS2 Sohlh2*^{-/-} ovaries at P21. Hematoxylin was used for counterstaining ($n = 3$ per group). Scale bars: 50 μm . (B–D) RNA expression of *Sohlh2*, *EGFP*, and *Sohlh1*. *Sohlh2* was fused with *EGFP*, and expression of *EGFP* showed that the *Ddx4*-Cre promoter was active in *Sohlh2*^{-/-} ovaries. However, overexpression of *Sohlh2* in *Sohlh2*^{-/-} ovaries could not rescue *Sohlh1* expression ($n = 6$ per group). Error bars indicate the mean \pm SD. Data are representative of at least 3 independent experiments.

acterized meiotic factors. The relative transcript levels of *Dmc1*, *Msh5*, SPO11 meiotic protein covalently bound to DSB (*Spo11*), *Rec8*, and other well-characterized meiotic genes were not significantly different between the WT and *Sohlh1*, *Sohlh2*, or S1/2DKO ovaries (Figure 9). These results indicate that meiotic components currently known to disrupt early oogenesis are not affected by *Sohlh1* or *Sohlh2* deficiency and that oocyte differentiation can be governed by factors independent of meiosis.

SOHLH1- and SOHLH2-dependent gene expression profile in the ovary. We performed RNA-seq analysis on single-KO or S1/2DKO newborn mouse ovaries to determine the molecular perturbations that precede a frank pathology in double-KO versus single-KO mouse ovaries. SOHLH1 and SOHLH2 were coexpressed in the vast majority of oocytes in newborn ovaries, and the histology of newborn ovaries was equivalent between WT and KOs. Analysis of the RNA-seq data revealed that 63 genes were significantly downregulated and 154 genes were markedly upregulated in *Sohlh1*^{-/-} mice; 53 genes were downregulated and 155 were upregulated in *Sohlh2*^{-/-} mice; and 94 genes were downregulated and 140 were upregulated in double-KO ovaries (Figure 10). *Sohlh1*- and *Sohlh2*-regulated networks were mainly repressed in the presence of *Sohlh1* and *Sohlh2*, but a substantial number of genes were also activated (downregulated in KOs). There was a significant overlap in genes misexpressed between *Sohlh1* and *Sohlh2* single-KO ovaries. Among downregulated genes, *Sohlh1* and *Sohlh2* single-KOs shared 44 genes of a total of 63 among *Sohlh1*-KOs (70%) and 53 genes among *Sohlh2*-KOs (83%). Among upregulated genes, *Sohlh1* and *Sohlh2* shared 135 genes (90%). S1/2DKO ovaries showed a substantially higher number of downregulated genes, 94, while the number of upregulated genes was not significantly different. The significantly higher number of genes downregulated in S1/2DKOs argues that *Sohlh1* and *Sohlh2* may have synergistic effects at the molecular level, despite a lack of effect on the histology phenotype. SOHLH1 and SOHLH2 proteins are known to

heterodimerize (9), and heterodimers may have additional effects on gene expression.

The downregulated genes include well-known oocyte-specific genes, such as *Lhx8*, *Nobox*, *Zp3*, and *Kit* (Figure 10 and Supplemental Table 1). Thirty genes were exclusively downregulated in S1/2DKO ovaries (Figure 10 and Supplemental Table 2). The downregulated gene list is enriched in the histone transcripts *H2afx*, *Hist2h4*, *Hist2h3c2*, *Hist1h4m*, *Hist2h2ac*, and *Hist1h2ag*, although the significance of this is unclear. One hundred twenty-six genes were upregulated in both single- and double-KO ovaries (Figure 10 and Supplemental Table 3) and include stimulated by retinoic acid gene 8 (*Stra8*) as well as testis-specific genes such as histone cluster 1, H1t (*Hist1h1t*); histone cluster 1, H2aa (*Hist1h2aa*); histone cluster 1, H2ba (*Hist1h2ba*); testis-expressed gene 16 (*Tex16*); and testis-expressed gene 101 (*Tex101*). Multiple members of the reproductive homeobox cluster (*Rhox*) family of homeobox genes, important in male infertility (19), are also upregulated and, in part, account for the preponderance of misregulated X chromosome genes (39%) in *Sohlh1*- and *Sohlh2*-deficient ovaries. The overexpression of testis-specific genes has been previously observed in other oocyte-specific KOs of *Nobox* (20) and *Figla* (21) genes and signifies the importance of oocytes in repressing male germline differentiation.

Discussion

Oocyte differentiation is closely intertwined with the onset of meiosis I, but the drivers of oocyte differentiation are unknown. The role of somatic factors is well established in embryonic male gonadal differentiation. Moreover, we and others have previously shown that *Sohlh1* and *Sohlh2*, two unique and germline-specific basic helix-loop-helix transcriptional regulators, coordinate male spermatogonial differentiation (9, 10, 22, 23). Much less is known regarding female gonadal differentiation, though somatic proteins encoded by *Wnt4* and *Foxl2* genes occupy a prominent role in the

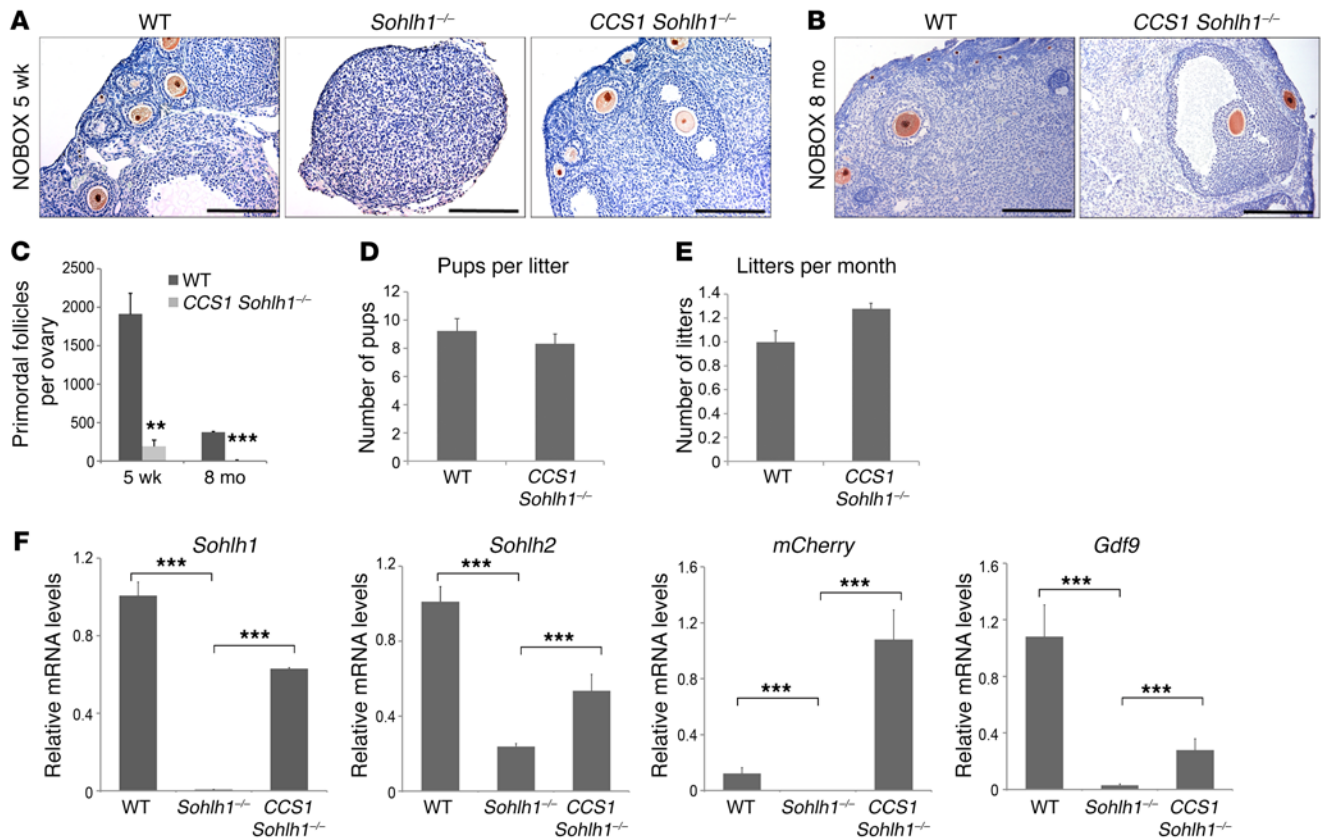


Figure 6. *Sohlh1* overexpression with *Gdf9* promoter-driven Cre rescues *Sohlh1*^{-/-} fertility but not the primordial follicle reserve. (A and B) Conditional expression of *Sohlh1* from the *CCS1* transgene with *Gdf9-Cre* rescued *Sohlh1*^{-/-} folliculogenesis. Histology sections were stained with anti-NOBOX antibodies to identify oocyte nuclei. The WT ovary showed various stages of folliculogenesis, while the *Sohlh1*^{-/-} ovary lacked oocytes at 5 weeks. *CCS1 Sohlh1*^{-/-} mice showed normal folliculogenesis from primary to large antral follicles at 5 weeks and 8 months, but had an unusually low number of primordial follicles ($n = 3$ per group). (C) Primordial follicle numbers in WT and *CCS1 Sohlh1*^{-/-} mice at 5 weeks and 8 months ($n = 5$ per group). (D and E) Fertility testing of *CCS1 Sohlh1*^{-/-} mice over a period of 6 months ($n = 3$ per group). (F) Expression levels of *Sohlh1*, *Sohlh2*, *mCherry*, and *Gdf9* in WT, *Sohlh1*-deficient (*Sohlh1*^{-/-}), and *Sohlh1*^{-/-}-rescued ovaries (*CCS1 Sohlh1*^{-/-}). ** $P < 0.01$ and *** $P < 0.001$, by 2-tailed Student's *t* test. Data represent the mean \pm SEM and are representative of at least 3 independent experiments.

female pathway. Even less is known regarding oocyte-expressed genes that drive oocyte differentiation independently of meiosis. We and others have previously shown the importance of the transcriptional regulators SOHLH1 (2, 5), SOHLH2 (3, 4), LHX8 (5, 6), NOBOX (7), FIGLA (8), and TATA-box-binding protein-associated factor 4b (TAF4B) (24) in postnatal oocyte differentiation. Postnatal studies have shown that these factors are critical in primordial follicle formation, primordial follicle-to-primary follicle transition, and oocyte survival. However, the embryonic onset of their expression and action in the embryonic ovary is poorly understood. SOHLH1 and SOHLH2 are exclusively expressed in the male and female germline (2, 3). We hypothesized that SOHLH1 and SOHLH2 are important factors in driving oocyte differentiation in the embryonic ovary.

The *Sohlh2* gene was initially identified as a homolog of *Sohlh1* (3), with their limited homology confined to the bHLH domains (~50%). Our data presented here, as well as the GEO expression profile data (Supplemental Figure 1), show that *Sohlh2* RNA and protein expression commences relatively early, as early as E12.5, and precedes *Sohlh1* expression. Interestingly, we observed that SOHLH2 protein was predominantly located in the cytoplasm pri-

or to the appearance of SOHLH1 protein (Figure 1). SOHLH1 protein's appearance, circa E15.5, led to the translocation of SOHLH2 into the nucleus and coincided with the appearance of LHX8 and NOBOX proteins (Figure 7). *Sohlh1*^{-/-} ovaries, examined at E16.5 and in newborns, showed that SOHLH2 protein expression was confined to the cytoplasm (Figure 2), reinforcing the conclusion that SOHLH2 cellular localization depends on SOHLH1 expression. Single deficiency of *Sohlh1*, *Sohlh2*, *Lhx8*, or *Nobox* disrupts the pattern of expression of other genes, implying an interdependence of these factors (Figure 8).

We do not know whether cytoplasmic SOHLH2 has a specific function. Transcription factors like p53 have posttranscriptional roles and bind transcripts to regulate their translation (25, 26). We hypothesize that cytoplasmic SOHLH2 is inactive and that translocation and heterodimerization with SOHLH1 are necessary for activity, however, further studies are needed to address this hypothesis.

Because SOHLH1 and SOHLH2 show limited homology, we originally hypothesized that these 2 proteins play independent roles and that double deficiency will produce synergistic effects in the ovary. However, the onset and extent of pathology in mice lacking both *Sohlh1* and *Sohlh2* is identical to that in single-KO

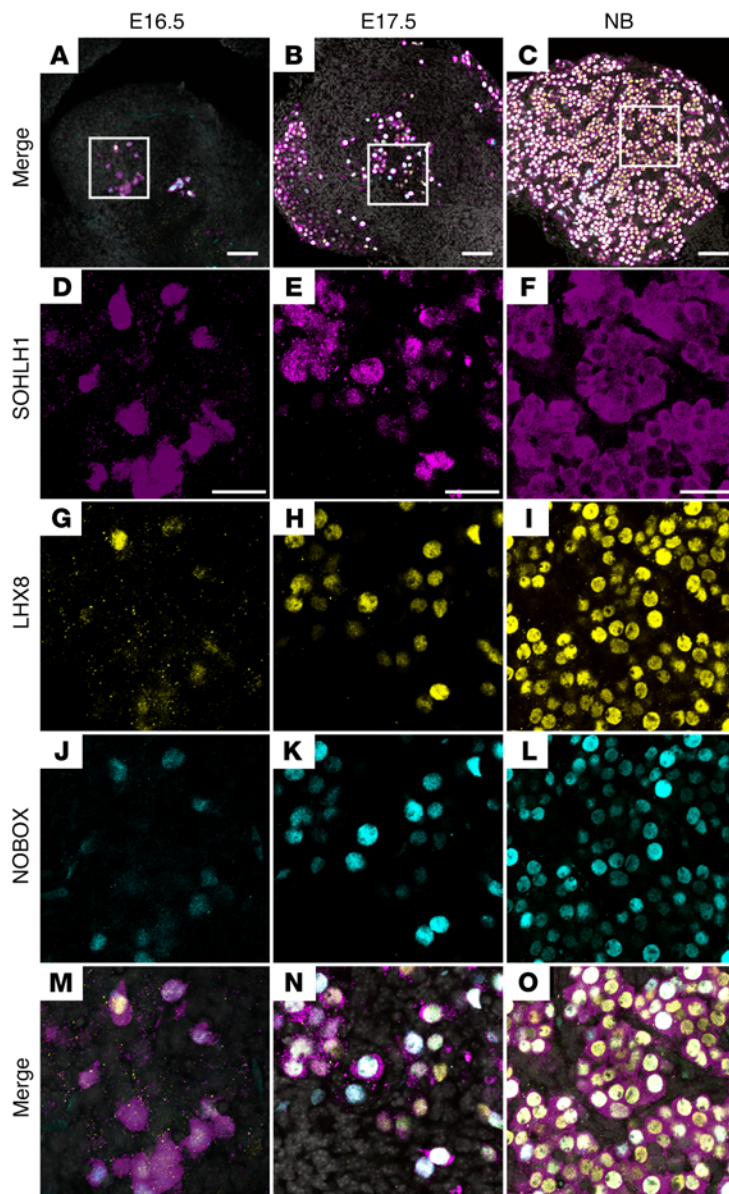


Figure 7. SOHLH1, LHX8, and NOBOX are coexpressed in embryonic ovaries. (A–C) Low-magnification merge images show squared areas that are magnified in D–O. Images show immunofluorescence results from whole-mount ovaries stained with antibodies against SOHLH1 (D–F, magenta), LHX8 (G–I, yellow), and NOBOX (J–L, cyan) at the indicated ages. (M–O) Merge images at higher magnification show coexpression of all 3 transcriptional regulators in the vast majority of cells at the indicated time points. DNA was stained with DAPI (blue) ($n = 3$ per group). Data are representative of at least 3 independent experiments. Scale bars: (A–C) 100 μm ; (D–O) 50 μm .

deficient ovaries (27). *Stra8*, one of the genes stimulated by retinoic acid, is essential for oocyte entry into meiosis. *Stra8* has a narrow window of expression around E14.5, after which it rapidly declines (Supplemental Figure 1). SOHLH1 has been proposed, in somatic cell lines, to play a role in *Stra8* downregulation (28). Despite the lack of a meiotic prophase, a subset of *Stra8*-deficient oocytes survive fetal life, can synthesize zona pellucida, can organize surrounding somatic cells into follicles, are ovulated in response to hormonal stimulation, undergo asymmetric cell division to produce a polar body, and cleave to form 2-cell embryos upon fertilization (29). Nonetheless, *Stra8*-deficient ovaries are highly abnormal, with a large loss of oocytes commencing in fetal ovaries and oocyte depletion being completed by 6 weeks' postnatal age, with resulting sterility (30).

Deficiency of *Sohlh1* and *Sohlh2* is associated with persistent expression of *Stra8* (Figure 10J and Supplemental Table 3). Because *Stra8* expression persists in both *Sohlh1*- and *Sohlh2*-KOs, it is likely that SOHLH1:SOHLH2 heterodimers are important in regulating *Stra8* expression. Despite persistent *Stra8* expression, meiosis I is grossly normal, and expression of other meiotic gene transcripts is unaffected (Figure 9). Other meiotic gene KOs support the notion that abnormal meiosis does not disrupt oocyte differentiation. For example, HORMA domain-containing 1 (*Hormad1*) is a major pachytene checkpoint, and our previous work revealed that *Hormad1*-deficient oocytes have unsynapsed chromosomes and lack pachynema, yet have a normal number of primordial follicles with normal oogenesis and folliculogenesis (31, 32). *Hormad1* deficiency does not affect oocyte differentiation (33), nor does it perturb the expression of SOHLH1 (Supplemental Figure 3).

The expression of many oocyte-specific transcriptional regulators, such as LHX8, NOBOX, and FIGLA, is initiated in the embryonic ovaries and overlaps with SOHLH1 expression and SOHLH2 nuclear translocation. Moreover, *Sohlh1* and *Sohlh2* gene deficiencies disrupt LHX8 and NOBOX protein embryonic expression without disrupting meiosis. The loss of oocytes at the very early ages in single and combined *Sohlh1* and *Sohlh2* deficiencies is therefore unlikely to be due to meiosis but rather to disruption in the regulation of genes such as *Lhx8* and *Nobox* (5, 7, 14). Our results are consistent with the interpretation that SOHLH1 and SOHLH2 are important regulators of oocyte differentiation, independent of meiosis, whose molecular inter-

mice (Figure 3). The lack of a synergistic effect is consistent with the interpretation that *Sohlh1* and *Sohlh2* share a common pathway that is enabled at E15.5, when the appearance of SOHLH1 induces SOHLH2 nuclear translocation. Previous studies have shown that SOHLH1 and SOHLH2 physically interact and can form homo- and heterodimers (9, 10). Consistent with KO studies, which indicate that SOHLH1 and SOHLH2 could regulate common pathways, RNA-seq analyses of gene expression in *Sohlh1*- and *Sohlh2*-deficient ovaries showed a large overlap in misexpressed genes. Double mutants had more profound changes in gene expression, consistent with *Sohlh1* and *Sohlh2* synergism (Figure 10). SOHLH1 and SOHLH2 heterodimers may regulate genes involved in later steps of oocyte differentiation rather than those involved in the earlier steps of development.

Meiosis is a big event in the female embryonic ovary, commencing circa E13.5. Meiosis is dissociable from oocyte differentiation, as shown in studies of postnatal phenotypes in *Stra8*-

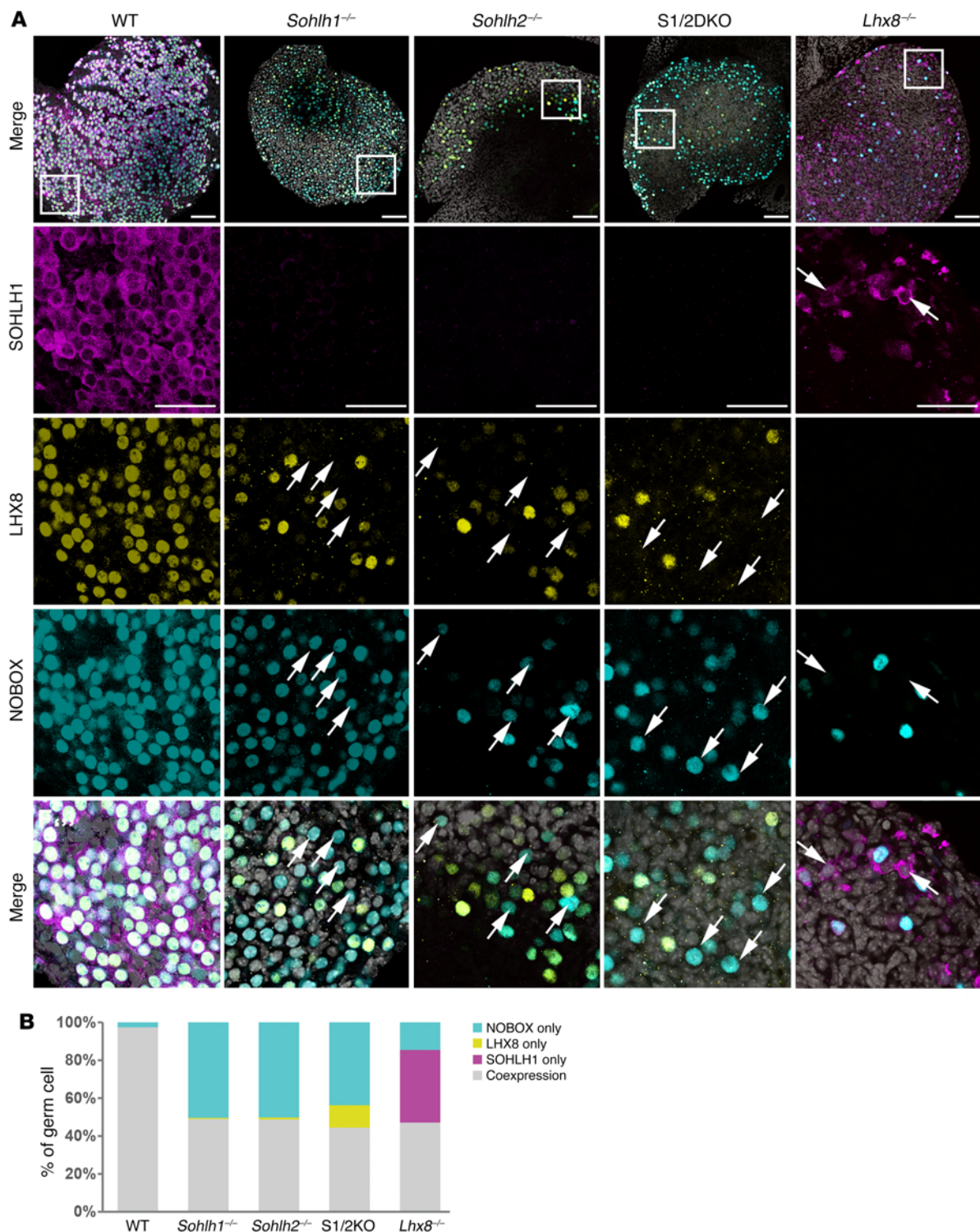


Figure 8. Transcriptional regulator deficiencies disrupt coexpression of oocyte-specific transcriptional regulators. (A) Immunofluorescence staining with SOHLH1 (magenta), LHX8 (yellow), and NOBOX (cyan) in ovaries from WT, *Sohlh1*^{-/-}, *Sohlh2*^{-/-}, S1/2DKO, and *Lhx8*^{-/-} mice. Scale bars: 100 μ m (top) and 50 μ m (enlargements). Arrows indicate oocytes expressing only LHX8 or NOBOX but not both ($n = 3$ per group). DNA was stained with DAPI (gray). (B) Quantitation of NOBOX-only, LHX8-only, SOHLH1-only, and LHX8/NOBOX-coexpressed oocytes in A. Data are representative of at least 3 independent experiments.

play begins circa E15.5 with the appearance of SOHLH1 and nuclear translocation of SOHLH2.

Recent human studies have shown that SOHLH1 and SOHLH2 loss-of-function mutations are involved in a subset

of XX and XY gonadal dysgenesis cases (34, 35) and show the importance of this pathway in human gonadal differentiation (34, 35). Our results show a dynamic interaction between oocyte-specific transcriptional regulators in the embryonic gonad and

Table 1. Meiosis gene expression

Gene	WT RPKM	<i>Sohlh1</i> -KO RPKM	<i>Sohlh2</i> -KO RPKM	S1/2DKO RPKM	P value	Significant
<i>Atm</i>	21.04	26.11	22.37	24.73	0.84	No
<i>Atr</i>	41.07	43.37	37.94	46.61	0.78	No
<i>Dmc1</i>	3.57	6.05	4.84	6.01	0.54	No
<i>Hormad1</i>	96.06	139.10	128.90	175.60	0.36	No
<i>Hormad2</i>	2.85	4.16	3.23	6.96	0.85	No
<i>Mlh1</i>	8.37	9.21	9.93	9.38	0.67	No
<i>Mlh3</i>	16.96	18.88	19.71	19.92	0.64	No
<i>Msh2</i>	42.36	32.31	33.26	34.51	0.46	No
<i>Msh3</i>	19.34	21.38	23.88	26.08	0.60	No
<i>Msh4</i>	3.76	4.00	4.02	6.02	0.89	No
<i>Msh5</i>	0.96	0.90	0.81	0.95	1.00	No
<i>Msh6</i>	57.84	56.83	56.15	57.12	0.93	No
<i>Smc1a</i>	49.26	57.59	54.25	47.89	0.76	No
<i>Sycp1</i>	238.40	261.23	244.03	318.64	0.94	No
<i>Sycp3</i>	438.99	315.22	299.07	338.24	0.22	No

Atm, ataxia telangiectasia mutated; *Atr*, ataxia telangiectasia and Rad3-related; *Mlh1/3*, mutL homolog 1; *Smc1a*, structural maintenance of chromosomes 1A; RPKM, reads per kilobase per million.

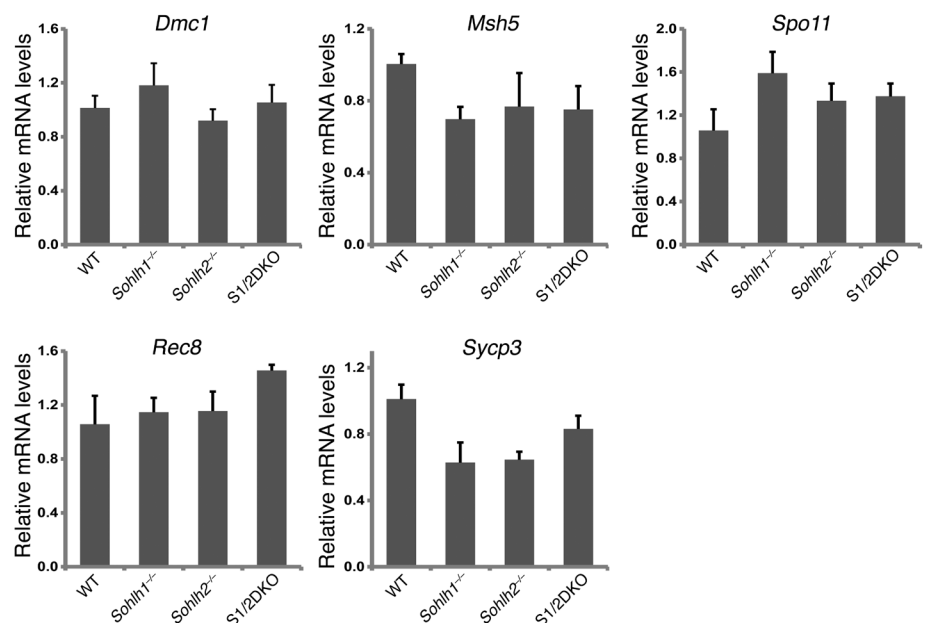
the importance of this interaction in orchestrating postnatal primordial follicle formation and oocyte differentiation independently of meiosis. Our previous studies in testes showed that *Sohlh1* and *Sohlh2* also coordinate spermatogonial differentiation (2, 9). *Sohlh1* and *Sohlh2* are therefore universal regulators of male and female germline differentiation. The sex-specific interplay of SOHLH1 and SOHLH2 is not well understood, but must be sexually dimorphic at the molecular level. For example, LHX8 and NOBOX determine ovarian development; their ovarian expression is dependent on SOHLH1 and SOHLH2, yet LHX8 and NOBOX deficiencies have no effect on male gonadal development or male infertility. The identity of somatic as well as germline factors that induce and extinguish *Sohlh1* and *Sohlh2*

expression and orchestrate sex-specific germline differentiation remain to be determined.

Methods

Animal breeding and transgenic lines. Pups were weaned at 3 weeks of age, and breeding pairs were set up at 6 weeks of age. One mating pair was placed per cage and inspected daily for the presence of litters. *Sohlh1*, *Sohlh2*, *Lhx8*, and *Hormad1* mice used in the current studies were previously described (2, 3, 14, 31). The *CCSI*- and *CCS2*-transgenic mice were generated by integrating the *CAG-loxp-CAT-loxp Sohlh1-mCherry (CCSI)* transgene or the *CAG-loxp-CAT-loxp Sohlh2-EGFP (CCS2)* transgene into the pronuclei of zygotes of FVB × FVB mice. Founder *CCSI* or *CCS2* mice were bred with FVB mice to

Figure 9. *Sohlh1* and *Sohlh2* deficiency and meiosis. Quantitative PCR analysis was conducted for *Dmc1*, *Msh5*, *Spo11*, *Rec8*, and synaptonemal complex protein 3 (*Sycp3*) transcripts in WT, *Sohlh1*^{-/-}, *Sohlh2*^{-/-}, and S1/2DKO mice (*n* = 6 per group). *Gapdh* was used for normalization, and the $\Delta\Delta C_t$ was calculated for the fold change. Error bars indicate the mean \pm SD. A 2-tailed Student's *t* test was used to calculate *P* values (compared with WT). Data are representative of at least 3 independent experiments. A *P* value of less than 0.05 was considered statistically significant. No significant differences in expression were found between different genotypes (*P* value was greater than 0.05).



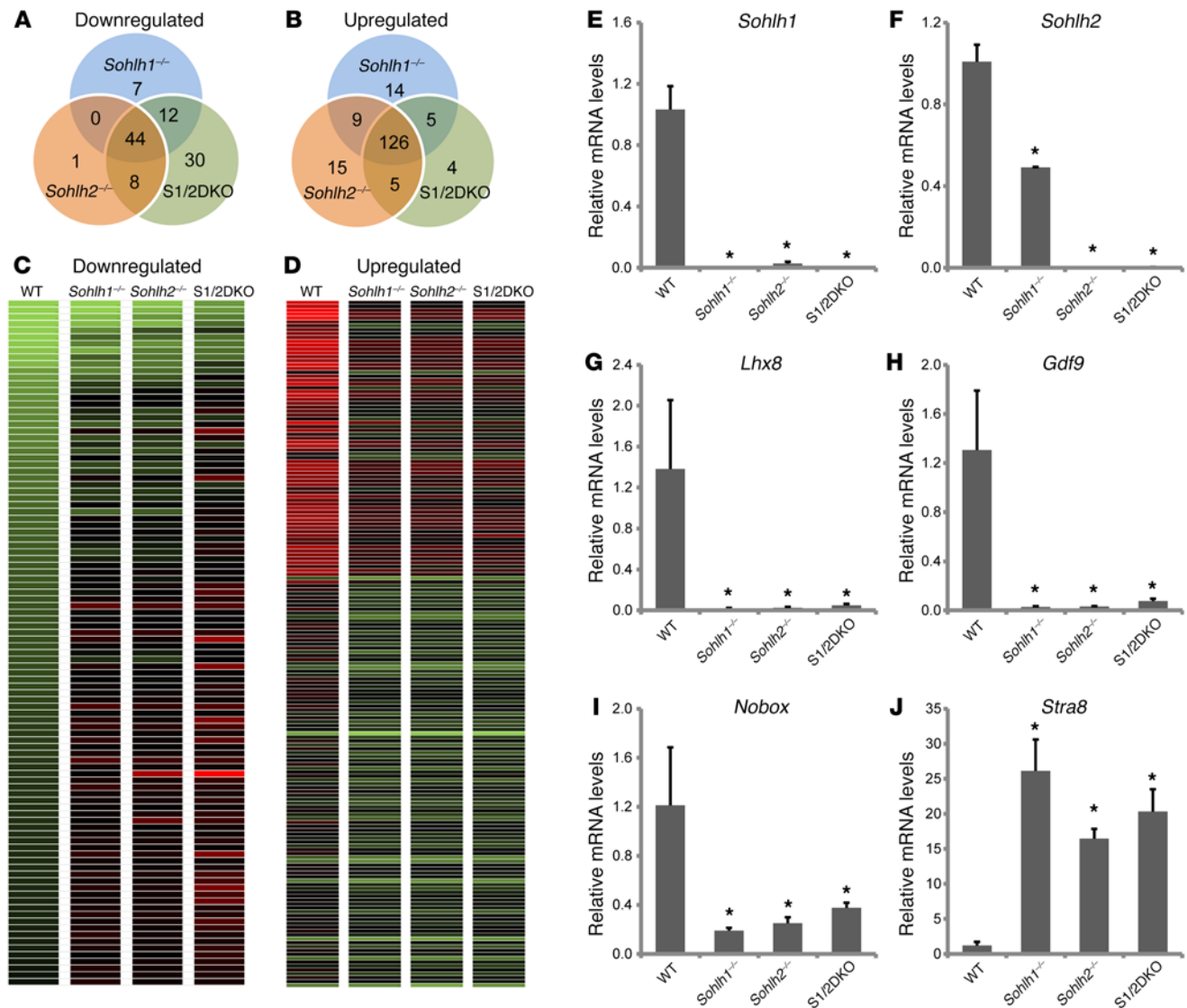


Figure 10. *Sohlh1* and *Sohlh2* deficiencies show significant overlap in affected genes. Venn diagrams show overlap and differences in the number of downregulated (A) and upregulated (B) transcripts as well as transcript heatmaps (C and D) derived from *Sohlh1*^{-/-}, *Sohlh2*^{-/-}, and S1/2DKO mice when compared with the WT newborn ovary transcriptomes. Transcript data were derived from RNA-seq, and genes that showed a greater-than 2-fold change compared with WT were included. (E–J) Quantitative PCR analyses derived from RNA-seq of select genes such as *Sohlh1* (E), *Sohlh2* (F), *Lhx8* (G), *Nobox* (H), *Gdf9* (I), and *Stra8* (J) in WT, *Sohlh1*^{-/-}, *Sohlh2*^{-/-}, and S1/2DKO mice ($n = 6$ per group). *Gapdh* was used for normalization, and $\Delta\Delta Ct$ was calculated for the fold change. Error bars indicate the mean \pm SD. * $P < 0.05$, by 2-tailed Student's t test (compared with WT). Data are representative of at least 3 independent experiments.

expand the colony. *Ddx4-Cre* mice were purchased from The Jackson Laboratory, and *Gdf9-Cre* mice were a gift of Austin Cooney (University of Texas at Austin, Austin, Texas, USA) (13).

Histology and whole-mount immunostaining. Ovaries were fixed in 10% buffered formalin (Sigma-Aldrich). Fixed tissues were embedded in paraffin, serially sectioned (5- μ m thickness), and stained with hematoxylin (Sigma-Aldrich) and periodic acid-Schiff (PAS). Germ cell cysts and primordial, primary, and secondary follicles were defined as described previously (5). WT and mutant oocytes were stained concurrently with the same mixture of antibodies.

For whole mounting, ovaries were fixed in 4% paraformaldehyde and serially washed with 25%, 50%, 75%, and 100% methanol. Oocytes were labeled with anti-SOHLH1 (2); anti-SOHLH2 (3); anti-DDX4 (ab13840; Abcam); anti-c-KIT (a gift of Tasumi Hirata,

National Institute of Genetics, Mishima, Japan) (36); anti-NOBOX (7); and anti-LHX8 antibodies (14). Confocal microscopy (Nikon A1) was used to detect immunofluorescence.

RNA-seq. RNA-seq was performed in WT and *Sohlh1*^{-/-} and *Sohlh2*^{-/-} single- or double-KO mouse ovaries. Total RNA was isolated from pools of 5 newborn ovaries, using the RNeasy Mini Kit (QIAGEN) and following the manufacturer's protocol. A cDNA library was made using a SMARTer Stranded Total RNA Sample Prep Kit (Clontech), and next-generation sequencing was performed on an Illumina NextSeq 500 (Illumina) with the Mid Output Kit (Illumina). Approximately 40 million reads were generated per sample (WT control and single and double knockouts cDNA). *Sohlh1*^{-/-} and *Sohlh2*^{-/-} single- or double-KO RNA-seq reads were mapped and analyzed using TopHat (37), Cufflinks (38), and Cuffdiff (39). The raw RNA-seq data from this study

have been deposited in the NCBI's Sequence Read Archive (accession no. PRJNA293873). RNA-seq data for specific transcripts were validated by quantitative PCR as previously described (4).

Statistics. Data are presented as the mean \pm SEM. Results were analyzed using a 2-tailed Student's *t* test. A *P* value of less than 0.05 was considered statistically significant.

Study approval. All experimental and surgical procedures complied with the NIH *Guide for the Care and Use of Laboratory Animals* (National Academies Press, 2011) and were approved by the IACUC of the University of Pittsburgh, under protocol number 14094558.

Author contributions

YHS, KJG, VM, HS, and HWA conducted the experiments. YHS, KJG, YR, and AR analyzed and interpreted the data. YHS, YR, and

AR wrote the manuscript. YR and AR reviewed and revised the manuscript. AR supervised the study.

Acknowledgments

We thank Huaiyang Jiang (Magee-Womens Research Institute, Pittsburgh, PA, USA) for his help with the RNA-seq data analysis. This study was supported by the Magee-Womens Research Foundation and National Institutes of Health grants HD044858 and HD070647.

Address correspondence to: Aleksandar Rajkovic, Magee-Womens Research Institute, Department of Obstetrics, Gynecology and Reproductive Sciences, University of Pittsburgh, Pittsburgh, Pennsylvania 15213, USA. E-mail: rajkovic@upmc.edu.

- Schmidt D, et al. The murine winged-helix transcription factor Foxl2 is required for granulosa cell differentiation and ovary maintenance. *Development*. 2004;131(4):933–942.
- Ballow D, Meistrich ML, Matzuk M, Rajkovic A. Sohlh1 is essential for spermatogonial differentiation. *Dev Biol*. 2006;294(1):161–167.
- Ballow DJ, Xin Y, Choi Y, Pangas SA, Rajkovic A. Sohlh2 is a germ cell-specific bHLH transcription factor. *Gene Expr Patterns*. 2006;6(8):1014–1018.
- Choi Y, Yuan D, Rajkovic A. Germ cell-specific transcriptional regulator sohlh2 is essential for early mouse folliculogenesis and oocyte-specific gene expression. *Biol Reprod*. 2008;79(6):1176–1182.
- Pangas SA, et al. Oogenesis requires germ cell-specific transcriptional regulators Sohlh1 and Lhx8. *Proc Natl Acad Sci U S A*. 2006;103(21):8090–8095.
- Qin Y, Zhao H, Kovanci E, Simpson JL, Chen ZJ, Rajkovic A. Analysis of LHX8 mutation in premature ovarian failure. *Fertil Steril*. 2008;89(4):1012–1014.
- Rajkovic A, Pangas SA, Ballow D, Suzumori N, Matzuk MM. NOBOX deficiency disrupts early folliculogenesis and oocyte-specific gene expression. *Science*. 2004;305(5687):1157–1159.
- Soyal SM, Amleh A, Dean J. FIGalpha, a germ cell-specific transcription factor required for ovarian follicle formation. *Development*. 2000;127(21):4645–4654.
- Suzuki H, et al. SOHLH1 and SOHLH2 coordinate spermatogonial differentiation. *Dev Biol*. 2012;361(2):301–312.
- Toyoda S, Yoshimura T, Mizuta J, Miyazaki J. Auto-regulation of the Sohlh1 gene by the SOHLH2/SOHLH1/SP1 complex: implications for early spermatogenesis and oogenesis. *PLoS ONE*. 2014;9(7):e101681.
- Kawamoto S, et al. A novel reporter mouse strain that expresses enhanced green fluorescent protein upon Cre-mediated recombination. *FEBS Lett*. 2000;470(3):263–268.
- Gallardo T, Shirley L, John GB, Castrillon DH. Generation of a germ cell-specific mouse transgenic Cre line, Vasa-Cre. *Genesis*. 2007;45(6):413–417.
- Lan ZJ, Xu X, Cooney AJ. Differential oocyte-specific expression of Cre recombinase activity in GDF-9-iCre, Zp3cre, and Msx2Cre transgenic mice. *Biol Reprod*. 2004;71(5):1469–1474.
- Choi Y, Ballow DJ, Xin Y, Rajkovic A. Lim homeobox gene, lhx8, is essential for mouse oocyte differentiation and survival. *Biol Reprod*. 2008;79(3):442–449.
- Moens PB, Kolas NK, Tarsounas M, Marcon E, Cohen PE, Spyropoulos B. The time course and chromosomal localization of recombination-related proteins at meiosis in the mouse are compatible with models that can resolve the early DNA-DNA interactions without reciprocal recombination. *J Cell Sci*. 2002;115(Pt 8):1611–1622.
- de Vries SS, et al. Mouse Muts-like protein Msh5 is required for proper chromosome synapsis in male and female meiosis. *Genes Dev*. 1999;13(5):523–531.
- Bannister LA, Reinholdt LG, Munroe RJ, Schimmenti JC. Positional cloning and characterization of mouse mei8, a disrupted allele of the meiotic cohesin Rec8. *Genesis*. 2004;40(3):184–194.
- Bannister LA, et al. A dominant, recombination-defective allele of Dmc1 causing male-specific sterility. *PLoS Biol*. 2007;5(5):e105.
- Richardson ME, Bleiziffer A, Tüttelmann F, Gromoll J, Wilkinson MF. Epigenetic regulation of the RHOX homeobox gene cluster and its association with human male infertility. *Hum Mol Genet*. 2014;23(1):12–23.
- Choi Y, Qin Y, Berger MF, Ballow DJ, Bulyk ML, Rajkovic A. Microarray analyses of newborn mouse ovaries lacking Nobox. *Biol Reprod*. 2007;77(2):312–319.
- Joshi S, Davies H, Sims LP, Levy SE, Dean J. Ovarian gene expression in the absence of FIGLA, an oocyte-specific transcription factor. *BMC Dev Biol*. 2007;7:67.
- Hao J, et al. Sohlh2 knockout mice are male-sterile because of degeneration of differentiating type A spermatogonia. *Stem Cells*. 2008;26(6):1587–1597.
- Toyoda S, et al. Sohlh2 affects differentiation of KIT positive oocytes and spermatogonia. *Dev Biol*. 2009;325(1):238–248.
- Falender AE, Shimada M, Lo YK, Richards JS. TAF4b, a TBP associated factor, is required for oocyte development and function. *Dev Biol*. 2005;288(2):405–419.
- Tournillon AS, et al. p53 binds the mdmx mRNA and controls its translation. *Oncogene*. 2017;36(5):723–730.
- Cassiday LA, Maher LJ. Having it both ways: transcription factors that bind DNA and RNA. *Nucleic Acids Res*. 2002;30(19):4118–4126.
- Dokshin GA, Baltus AE, Eppig JJ, Page DC. Oocyte differentiation is genetically dissociable from meiosis in mice. *Nat Genet*. 2013;45(8):877–883.
- Desimio MG, Campolo F, Dolci S, De Felici M, Farini D. SOHLH1 and SOHLH2 directly down-regulate STIMULATED BY RETINOIC ACID 8 (STRA8) expression. *Cell Cycle*. 2015;14(7):1036–1045.
- Koubova J, et al. Retinoic acid activates two pathways required for meiosis in mice. *PLoS Genet*. 2014;10(8):e1004541.
- Paredes A, et al. Loss of synaptonemal complex protein-1, a synaptonemal complex protein, contributes to the initiation of follicular assembly in the developing rat ovary. *Endocrinology*. 2005;146(12):5267–5277.
- Shin YH, et al. Hormad1 mutation disrupts synaptonemal complex formation, recombination, and chromosome segregation in mammalian meiosis. *PLoS Genet*. 2010;6(11):e1001190.
- Daniel K, et al. Meiotic homologue alignment and its quality surveillance are controlled by mouse HORMAD1. *Nat Cell Biol*. 2011;13(5):599–610.
- Shin YH, McGuire MM, Rajkovic A. Mouse HORMAD1 is a meiosis I checkpoint protein that modulates DNA double-strand break repair during female meiosis. *Biol Reprod*. 2013;89(2):29.
- Bayram Y, et al. Homozygous loss-of-function mutations in SOHLH1 in patients with nonsyndromic hypergonadotropic hypogonadism. *J Clin Endocrinol Metab*. 2015;100(5):E808–E814.
- Qin Y, et al. Novel variants in the SOHLH2 gene are implicated in human premature ovarian failure. *Fertil Steril*. 2014;101(4):1104–1109.e6.
- Yamatani H, Sato Y, Fujisawa H, Hirata T. Chronotopic organization of olfactory bulb axons in the lateral olfactory tract. *J Comp Neurol*. 2004;475(2):247–260.
- Trapnell C, Pachter L, Salzberg SL. TopHat: discovering splice junctions with RNA-Seq. *Bioinformatics*. 2009;25(9):1105–1111.
- Trapnell C, et al. Transcript assembly and quantification by RNA-Seq reveals unannotated transcripts and isoform switching during cell differentiation. *Nat Biotechnol*. 2010;28(5):511–515.
- Trapnell C, et al. Differential gene and transcript expression analysis of RNA-seq experiments with TopHat and Cufflinks. *Nat Protoc*. 2012;7(3):562–578.