

# Loss of *DDRGK1* modulates SOX9 ubiquitination in spondyloepimetaphyseal dysplasia

Adetutu T. Egunsola,<sup>1</sup> Yangjin Bae,<sup>1</sup> Ming-Ming Jiang,<sup>1</sup> David S. Liu,<sup>1</sup> Yuqing Chen-Evenson,<sup>1</sup> Terry Bertin,<sup>1</sup> Shan Chen,<sup>1</sup> James T. Lu,<sup>2,3</sup> Lisette Nevarez,<sup>4</sup> Nurit Magal,<sup>5</sup> Annick Raas-Rothschild,<sup>6,7</sup> Eric C. Swindell,<sup>8</sup> Daniel H. Cohn,<sup>4,9,10</sup> Richard A. Gibbs,<sup>1,2</sup> Philippe M. Campeau,<sup>11</sup> Mordechai Shohat,<sup>12</sup> and Brendan H. Lee<sup>1</sup>

<sup>1</sup>Department of Molecular and Human Genetics, <sup>2</sup>Human Genome Sequencing, and <sup>3</sup>Department of Structural and Computational Biology and Molecular Biophysics, Baylor College of Medicine, Houston, Texas, USA. <sup>4</sup>Department of Molecular Cell and Developmental Biology, UCLA, Los Angeles, California, USA. <sup>5</sup>Recanati Institute of Medical Genetics at Rabin Medical Center, Petach Tikva, Israel. <sup>6</sup>Institute for Rare Diseases at Sheba-Tel Hashomer Medical Center, Ramat Gan, Israel. <sup>7</sup>Department of Pediatrics, Sackler School of Medicine, Tel Aviv University, Tel Aviv, Israel. <sup>8</sup>The University of Texas Graduate School of Biomedical Sciences, Houston, Texas, USA. <sup>9</sup>Department of Orthopaedic Surgery and <sup>10</sup>International Skeletal Dysplasia Registry, UCLA, Los Angeles, California, USA. <sup>11</sup>Department of Pediatrics, University of Montreal, Montreal, Quebec, Canada. <sup>12</sup>Maccabi Genetic Institute and Bioinformatics Unit — Sheba Cancer Research Center, Sackler School of Medicine, Tel Aviv University, Tel Aviv, Israel.

**Shohat-type spondyloepimetaphyseal dysplasia (SEMD) is a skeletal dysplasia that affects cartilage development. Similar skeletal disorders, such as spondyloepiphyseal dysplasias, are linked to mutations in type II collagen (COL2A1), but the causative gene in SEMD is not known. Here, we have performed whole-exome sequencing to identify a recurrent homozygous c.408+1G>A donor splice site loss-of-function mutation in DDRGK domain containing 1 (*DDRGK1*) in 4 families affected by SEMD. In zebrafish, *ddrgk1* deficiency disrupted craniofacial cartilage development and led to decreased levels of the chondrogenic master transcription factor *sox9* and its downstream target, *col2a1*. Overexpression of *sox9* rescued the zebrafish chondrogenic and craniofacial phenotype generated by *ddrgk1* knockdown, thus identifying *DDRGK1* as a regulator of SOX9. Consistent with these results, *Ddrgek1*<sup>-/-</sup> mice displayed delayed limb bud chondrogenic condensation, decreased SOX9 protein expression and *Col2a1* transcript levels, and increased apoptosis. Furthermore, we determined that *DDRGK1* can directly bind to SOX9 to inhibit its ubiquitination and proteasomal degradation. Taken together, these data indicate that loss of *DDRGK1* decreases SOX9 expression and causes a human skeletal dysplasia, identifying a mechanism that regulates chondrogenesis via modulation of SOX9 ubiquitination.**

## Introduction

Chondrodysplasias are a clinically and genetically diverse group of skeletal dysplasias that primarily affect cartilage and present with disproportionate short stature and premature osteoarthritis (OA) (1–3). Shohat type spondyloepimetaphyseal dysplasia (SEMD) is a chondrodysplasia characterized by vertebral, epiphyseal, and metaphyseal abnormalities. These abnormalities include scoliosis with vertebral compression fractures, flattened vertebral bodies, and hypomineralization of the long bones. Additionally, affected individuals may have a small trunk, short neck, small limbs, joint laxity, bowlegs, and/or abdominal distension with hepatosplenomegaly (4–6).

Shohat-type SEMD shares some clinical features with the spondyloepiphyseal dysplasia (SED) spectrum, including long-bone and vertebral defects. Disorders of the SED spectrum, which include SED congenita and X-linked SED tarda, are usually caused by mutations altering the expression and/or processing of type II collagen (*COL2A1*), the most abundant extracellular matrix protein in cartilage (1, 2, 7, 8). Specifically, mutations in *COL2A1* were the first reported cause of a human chondrodysplasia, SED congenita. Shohat-type SEMD is not caused by any known mutations in genes that affect the structure or trafficking of *COL2A1*. However,

its phenotypic overlap with the SED spectrum led us to hypothesize that its causative gene may control *COL2A1* processing and/or cartilage formation.

To identify the genetic cause of Shohat-type SEMD, we performed whole-exome sequence (WES) on a proband and identified a homozygous c.408+1G>A donor splice site mutation in the *DDRGK* domain containing 1 (*DDRGK1*) gene. *DDRGK1*, also known as UFM1-binding protein 1 containing a PCI domain (UFBP1), has been linked to protein stability and activation. For instance, in vitro knockdown of *Ddrgek1* indirectly inhibits IκBα ubiquitination by increasing phosphorylation of IκBα, a prerequisite for its ubiquitination (9). *DDRGK1* is also required for estrogen receptor α (ERα) transactivation, as it mediates activating signal co-integrator 1 (ASC1) ubiquitination, an ubiquitin-like posttranslational modification (10). While the cellular functions of *Ddrgek1* have been investigated in other systems (9–13), its role in skeletal development remains unknown.

Here, we report that *Ddrgek1* is essential for cartilage development and the differentiation of chondrocytes, the cells that produce and maintain cartilage. Furthermore, we demonstrate that *DDRGK1* loss of function causes Shohat-type SEMD pathogenesis by increasing ubiquitin-dependent proteasomal degradation of SOX9.

## Results

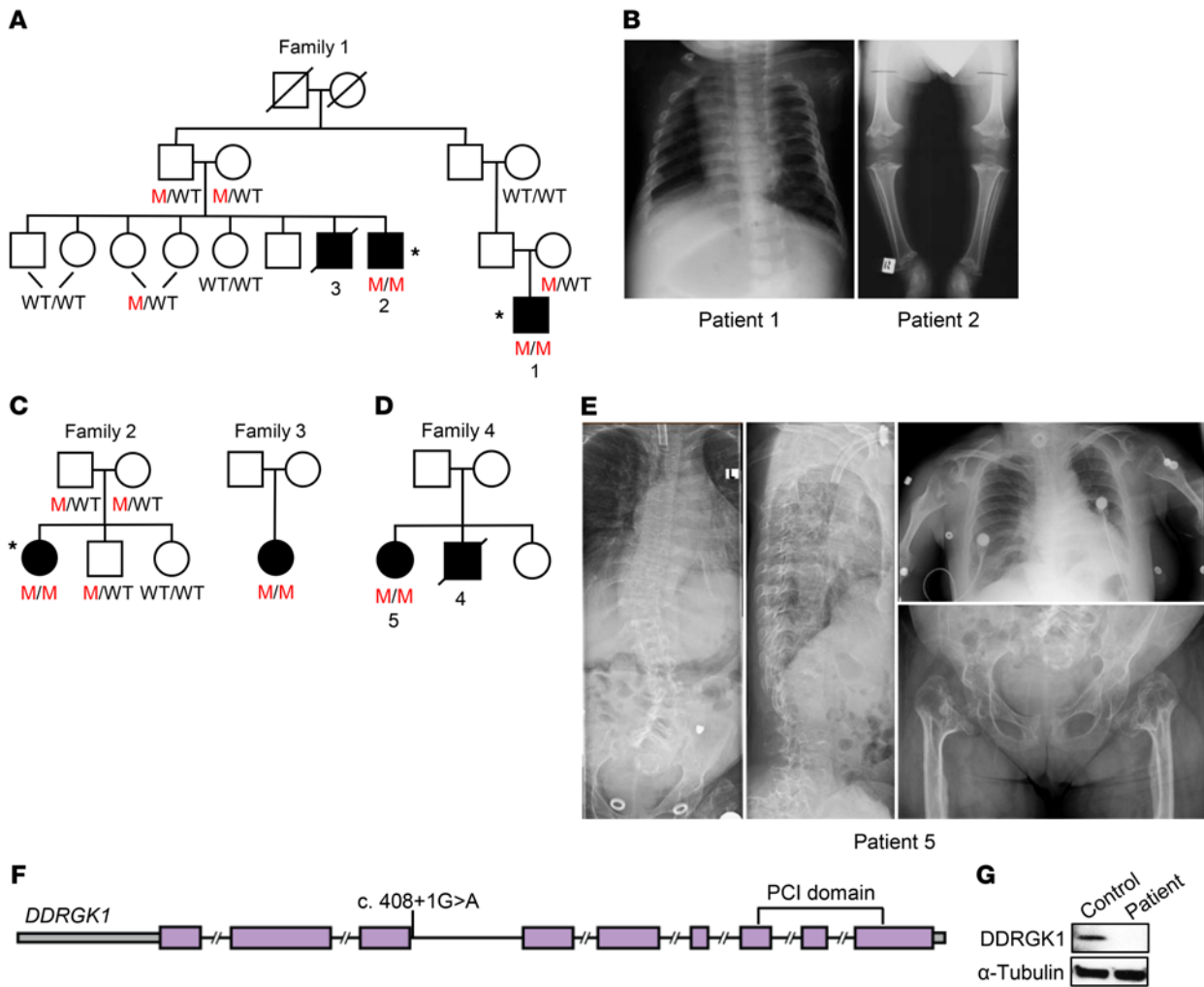
*Shohat-type SEMD is caused by a loss-of-function mutation within the DDRGK1 gene.* Family 1, of Jewish Iraqi descent, was first

**Conflict of interest:** The authors have declared that no conflict of interest exists.

**Submitted:** August 17, 2016; **Accepted:** January 12, 2017.

**Reference information:** *J Clin Invest.* 2017;127(4):1475–1484.

<https://doi.org/10.1172/JCI90193>.



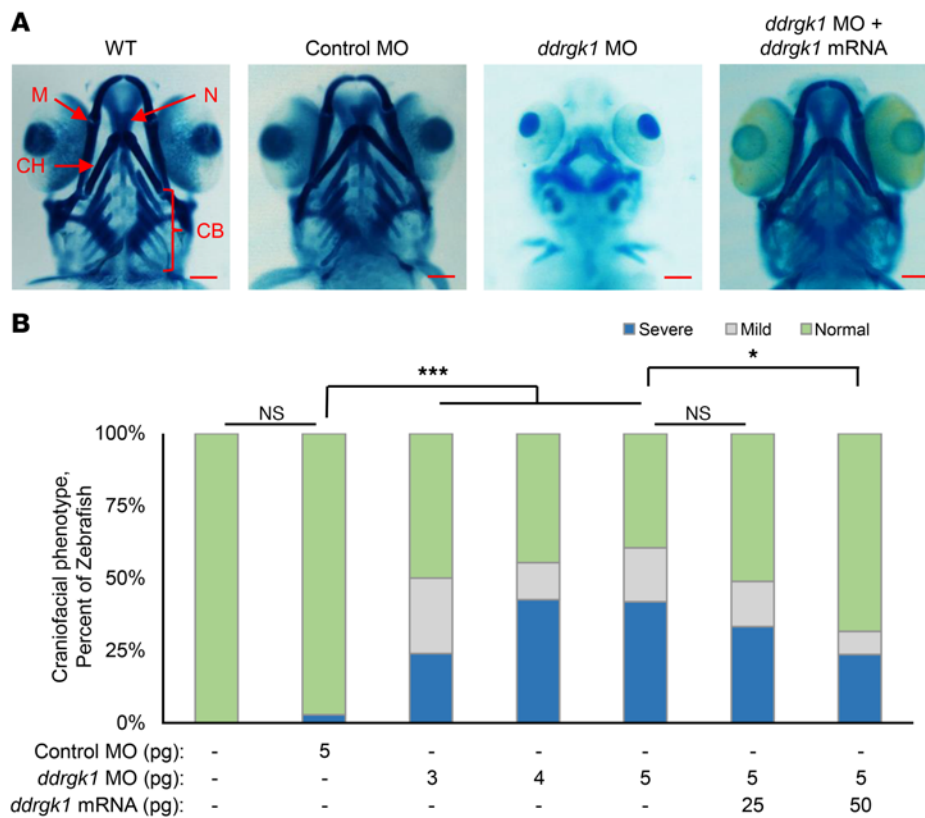
**Figure 1. Homozygous *DDRGK1* loss-of-function mutation identified in Iraqi Jewish families with Shohat-type SEMD.** (A) Pedigree of family 1. M represents mutant allele. Asterisks indicate individuals who were selected for WES. (B) Radiographs from family 1 reveal platyspondyly and hypomineralized epiphyses and metaphyses in patients 1 and 2, respectively. (C and D) Pedigrees of families 2, 3, and 4. (E) Radiographs show severe scoliosis, vertebral compression fractures, platyspondyly, broaden hypomineralized metaphyses, and smaller than average hypomineralized epiphyses in patient 5 from family 4. (F) Schematic of the c.408+1G>A mutation in the *DDRGK1* gene. (G) Western analysis of whole cell lysates reveals absence of *DDRGK1* expression in patient LCLs.

reported and diagnosed in 1993 with Shohat-type SEMD (Figure 1A). As previously described, these patients have a disproportionate short stature, short neck, small chest, mild abdominal distension with hepatosplenomegaly, lordosis, short limbs, genu varum, and joint hypermobility (6). Radiographically, they have delayed epiphyseal ossification, platyspondyly with central notches in the vertebral end plates, radiolucency of the femoral metaphyses, and relative fibular overgrowth (6), as seen in the radiographs of patients 1 and 2 at ages 9 months and 5 years, respectively (Figure 1B). At age 18, because of his narrowed trachea, patient 1 required a lifesaving tracheostomy during an aborted orthopedic surgery. Unfortunately, this surgical complication was the cause of death for patients 3 and 4 from families 1 and 4, respectively. In addition, now at age 26, patient 1 has joint pain and hoarseness due to his severely narrowed larynx and bronchi.

The affected individuals in families 2 through 4, of Jewish Iraqi descent, were diagnosed with very short limbs in utero, and at birth, had vertebral and long-bone defects similar to those of

the patients in family 1 (Figure 1, C and D). In addition to severe scoliosis, vertebral compression fractures, platyspondyly, broadened hypomineralized metaphyses, and hypomineralized epiphyses (Figure 1E), patient 5 had a narrow trachea and severe upper airway obstruction requiring a tracheostomy (Figure 1E) with continuous positive airway pressure (CPAP) therapy while sleeping.

To identify the genetic cause of Shohat-type SEMD, we performed WES on 3 affected individuals from the first 2 Jewish families of Iraqi descent (Figure 1, A and C). By applying WES with an established method and variant filtering (14), we identified 1,951 genes with rare coding variants, 53 of which were shared by all 3 individuals. Out of the 53 genes, 13 had homozygous variants in all 3 patients; among these, *SLC4A11* and *DDRGK1* had rare variants having minor allele frequencies of less than 0.05 and were located at the same region of chromosome 20. The *SLC4A11* variant found in our patients is a known variant corresponding to dbSNP rs141705330, for which some individuals in the general population in the Exome Aggregation Consortium (ExAC; <http://exac>.



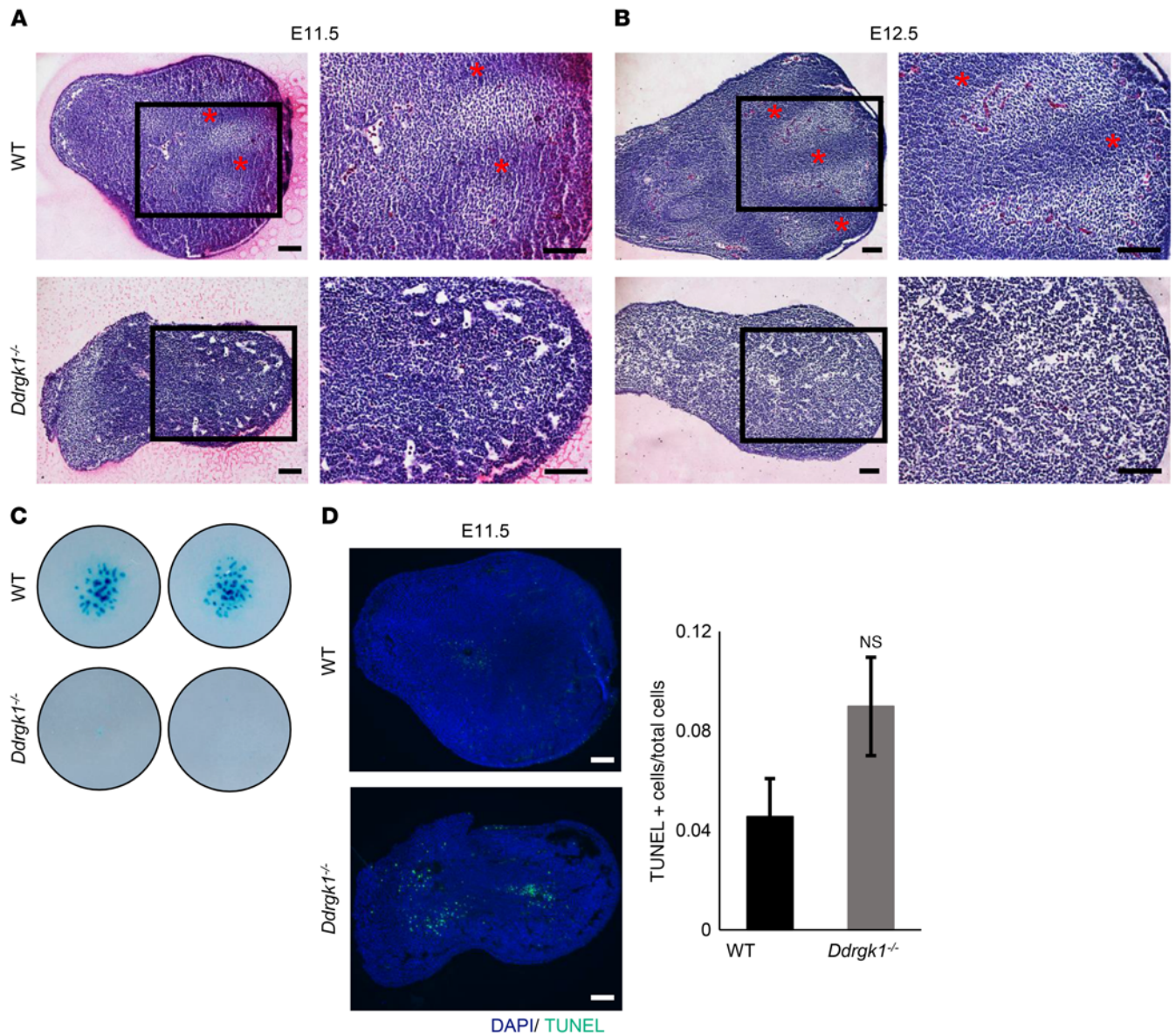
**Figure 2. Overexpression of *ddrgk1* mRNA rescues the *ddrgk1* knockdown cartilage phenotype in zebrafish.** (A) Ventral view at 120 h.p.f. of Alcian blue-stained WT embryos and embryos injected with either control MO or *ddrgk1* MO with or without exogenous *ddrgk1* mRNA. M, Meckel's cartilage; CH, ceratohyal cartilage; N, neurocranial cartilage; CB, ceratobranchial cartilage. Scale bars: 100  $\mu$ M. (B) Quantification of the craniofacial phenotype in the embryos. Embryos with normal craniofacial features had properly formed Meckel's cartilage, ceratohyal cartilage, neurocranial cartilage, and ceratobranchial cartilage. Embryos lacking ceratobranchial cartilage showed mild craniofacial defects, while embryos with several craniofacial defects had no neurocranial or ceratobranchial cartilage and poorly developed Meckel's cartilage and ceratohyal cartilage. WT,  $n = 44$ ; 5 pg control MO,  $n = 36$ ; 3 pg *ddrgk1* MO,  $n = 50$ ; 4 pg *ddrgk1* MO,  $n = 47$ ; 5 pg *ddrgk1* MO,  $n = 43$ ; 5 pg *ddrgk1* MO + 25 pg *ddrgk1* mRNA,  $n = 45$ ; 5 pg *ddrgk1* MO + 50 pg *ddrgk1* mRNA,  $n = 38$ . \* $P < 0.05$ ; \*\*\* $P < 0.001$ ; Kruskal-Wallis rank-sum test followed by Wilcoxon's rank-sum test with continuity correction.

broadinstitute.org/) database were homozygous. *SLC4A11* defects cause corneal endothelial dystrophy and sensorineural hearing loss in humans and mice (15, 16), while *DDRKG1* has been linked to protein stability and activation (9, 10). Therefore, based on the known variant and function of *SLC4A11*, *DDRKG1* appeared to be the best candidate gene for Shohat-type SEMD.

The 3 affected individuals had a homozygous c.408+1G>A donor splice site mutation in the third intron of the *DDRKG1* gene, while none of the unaffected family members were homozygous for this mutation (Figure 1F). Additionally, by conventional Sanger sequencing, we identified 2 more patients from families 3 and 4 who were homozygous for the same mutation (Figure 1, C and D). This variant was not found in the ExAC database, but there were other potential *DDRKG1* deleterious variants in the ExAC database, all heterozygous with minor allele frequencies of less than 0.001. To assess whether the c.408+1G>A mutation affected *DDRKG1* transcription and translation, we performed quantitative real-time PCR (qRT-PCR) and Western blot analysis on RNA and whole-cell lysates from lymphoblastoid cells (LCLs) of patient 1. While control LCLs expressed WT *DDRKG1* RNA, patient LCLs expressed a mix of 2 aberrant *DDRKG1* RNA species (Supplemental Figure 1, A and B; supplemental material available online with this article; <https://doi.org/10.1172/JCI90193DS1>). The first aberrant RNA was a read-through of the third intron and the second one was the result of use of a cryptic splice site, both resulting in a premature stop codon (Supplemental Figure 1B). When we examined protein expression, LCLs from the patient did not express *DDRKG1* (Figure 1G). These results suggest that the c.408+1G>A homozygous donor splice site mutation in *DDRKG1* leads to nonsense-mediated decay and is a founder, disease-causing variant of Shohat-type SEMD.

*Knockdown of *ddrgk1* disrupts cartilage development in zebrafish embryos.* In zebrafish, *ddrgk1* is highly expressed in the head at 60 hours post fertilization (h.p.f.) and the sequence of its *DdrGk1* protein is 53% identical to its human protein ortholog (17). Therefore, zebrafish were used to evaluate the functional consequences of *ddrgk1* deficiency in cartilage development. During zebrafish embryogenesis, chondrogenesis starts as early as 52 h.p.f., and well-developed craniofacial cartilage structures can be visualized by Alcian blue staining by 120 h.p.f. (18–20). We transiently knocked down the *ddrgk1* in zebrafish embryos with morpholino oligonucleotide (MO) injections. Similarly to WT, approximately 97% of embryos injected with control MO (control morphants) had well-developed Meckel's cartilage, ceratohyal cartilage, ceratobranchial cartilage, and neurocranial cartilage by 120 h.p.f. (Figure 2, A and B). Interestingly, 50% to 61% of embryos injected with *ddrgk1* MO (*ddrgk1* morphants) showed craniofacial defects, which increased in severity in a *ddrgk1* MO dosage-dependent manner (Figure 2, A and B). These defects included shortened and dysmorphic Meckel's cartilage and ceratohyal cartilage and the absence of ceratobranchial cartilage and neurocranial cartilage. The craniofacial defects in *ddrgk1* morphants thus suggest that *ddrgk1* is required for cartilage development.

To confirm that the craniofacial defects in *ddrgk1* morphants were caused by *ddrgk1* knockdown, we performed rescue experiments by coinjecting *ddrgk1* MO with *ddrgk1* mRNA resistant to MO targeting. Overexpression of *ddrgk1* mRNA rescued the cartilage malformations in *ddrgk1* morphants in a dosage-dependent manner, with the majority of *ddrgk1* morphants achieving normal craniofacial features. As the *ddrgk1* mRNA dose increased in *ddrgk1* morphants from 25 pg to 50 pg, the proportion of embryos

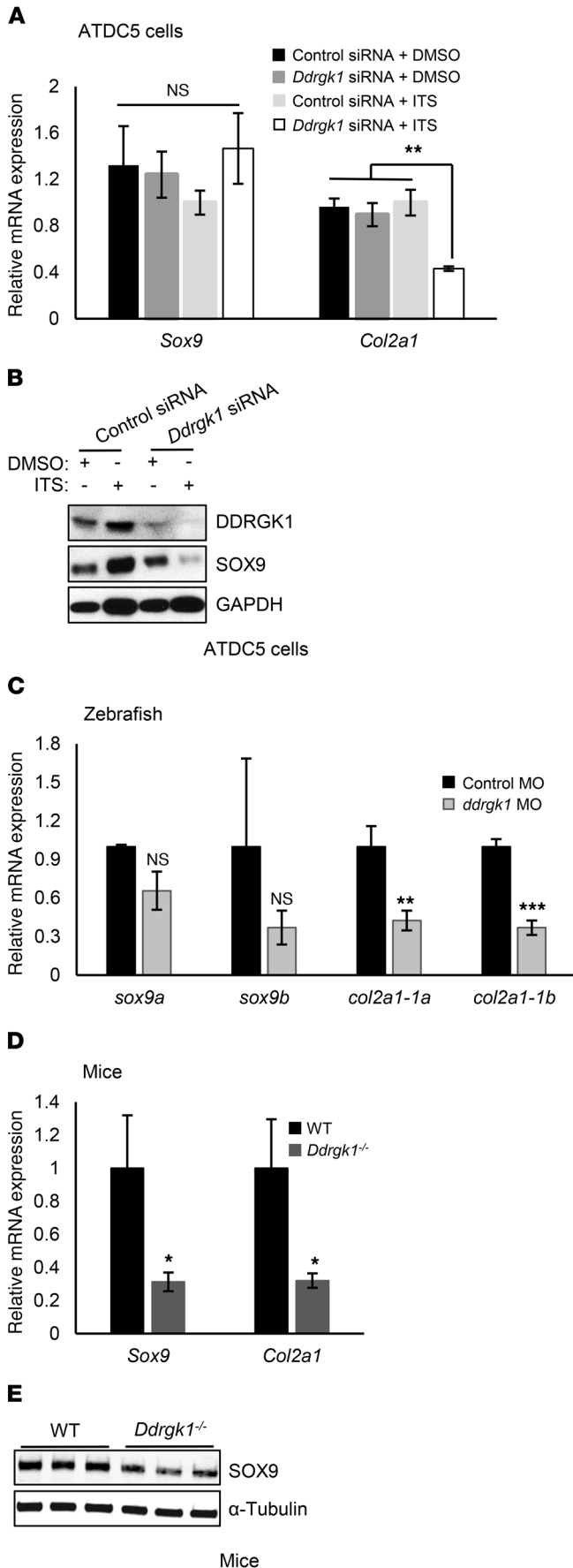


**Figure 3. Deletion of *DdrGk1* delays chondrogenic mesenchymal condensation and increases apoptosis in mouse limb buds.** (A and B) Mesenchymal condensation is detected in WT, but not in *DdrGk1*<sup>-/-</sup>, limb buds stained with H&E at (A) E11.5 and (B) E12.5. Red asterisks indicate regions undergoing mesenchymal condensation. Images on the right are higher magnification depictions of the boxed regions of the images to the left. (C) After 7 days, micromass cultures of dissociated *DdrGk1*<sup>-/-</sup> ( $n = 2$ ) mesenchymal cells produced fewer Alcian blue–positive cartilaginous nodules than WT ( $n = 2$ ) mesenchymal cells. Images are of 2 independent experiments. (D) TUNEL staining reveals *DdrGk1*<sup>-/-</sup> limb buds ( $n = 3$ ) have increased apoptosis compared with WT limb buds ( $n = 4$ ) at E11.5, trending toward significance. Values are represented as mean  $\pm$  SEM. Two-tailed  $t$  test. Scale bars: 100  $\mu$ M.

with normal craniofacial structures increased from 51% to 68% (Figure 2, A and B). This rescue of the cartilage phenotype in *ddrgk1* morphants by overexpression of *ddrgk1* mRNA confirms that *ddrgk1* is essential for cartilage development in zebrafish and supports the hypothesis that the c.408+1G>A *DDRKG1* loss-of-function mutation causes Shohat-type SEMD.

*DdrGk1*<sup>-/-</sup> mice show delayed chondrogenic mesenchymal condensation in the limb buds. To further characterize the in vivo function of *DdrGk1* in a mammalian context, we generated *DdrGk1* knockout mice using CRISPR/Cas9. After injecting *Cas9* mRNA and *DdrGk1* guide RNA into mouse embryos, we identified a 310-bp c.-249\_61del mutation in the *DdrGk1* gene in a founder mouse. This mutation deletes a fragment of the 5' UTR and most of the

first exon, including the start codon (Supplemental Figure 2, A and B). RT-PCR and Western blot analysis confirmed that *DdrGk1*<sup>2BL/2BL</sup> (*DdrGk1*<sup>-/-</sup>) mice do not express *DdrGk1* mRNA or protein (Supplemental Figure 2, C and D). As previously reported, we confirmed that *DdrGk1* loss of function results in embryonic lethality between E11.5 and E12.5 (ref. 13, Supplemental Figure 2E and Supplemental Table 1) because of an erythropoiesis deficiency (13). Deletion of *DdrGk1* decreases the number of erythrocytes and their progenitor cells in peripheral blood, while increasing the number of abnormal multinucleated erythrocytes in E11.5 embryos (13). However, there are no reports of Shohat-type SEMD patients with any erythropoiesis deficiency or phenotype (5, 6). These results suggest that erythropoiesis deficiency is potentially a mouse-specific phe-

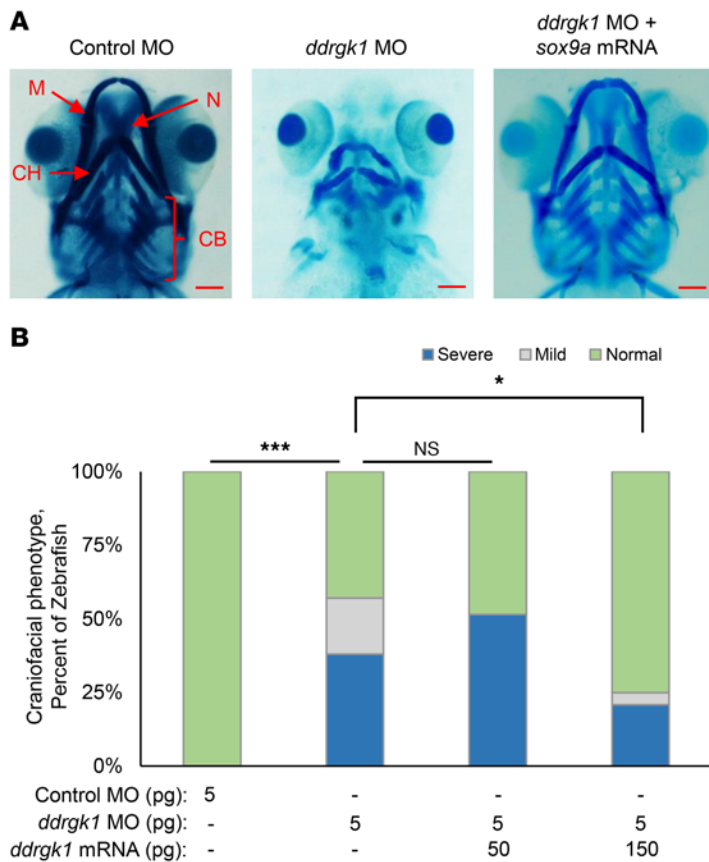


**Figure 4. *DdrGk1* deficiency decreases SOX9 protein and *Col2a1* mRNA expression.** (A and B) ATDC5 cells were transiently transfected with control or *DdrGk1* siRNA and treated with either DMSO or ITS to induce differentiation 24 hours later. The cells were harvested 7 days after treatment. (A) RT-PCR of total RNA from ATDC5 cells treated with control siRNA + DMSO ( $n = 3$ ), *DdrGk1* siRNA + DMSO ( $n = 3$ ), control siRNA + ITS ( $n = 3$ ), and *DdrGk1* siRNA + ITS ( $n = 3$ ). Values are represented as mean  $\pm$  SEM.  $**P < 0.01$ , 2-way ANOVA followed by Tukey's post-hoc test. (B) Immunoblots of total cell lysates from ATDC5 cells. The immunoblots are representative of 3 independent experiments. (C) *ddrgk1* morphants have less mRNA expression of *col2a1*, but not of *sox9*, than control morphants. Zebrafish embryos were injected with 5 pg control MO ( $n = 3$ ) or 5 pg *ddrgk1* MO ( $n = 3$ ), and total RNA was collected for RT-PCR 72 h.p.f. later. Values are represented as mean  $\pm$  SEM.  $**P < 0.01$ ;  $***P < 0.001$ , 2-tailed *t* test. (D and E) Deletion of *DdrGk1* decreases transcript levels of *Col2a1* via SOX9 protein reduction in E11.5 limb buds. (D) RT-PCR of total RNA from E11.5 WT ( $n = 3$ ) and *DdrGk1*<sup>-/-</sup> ( $n = 3$ ) limb buds. Values are represented as mean  $\pm$  SEM.  $*P < 0.05$ , 2-tailed *t* test. (E) Immunoblots of total cell lysates from E11.5 WT ( $n = 3$ ) and *DdrGk1*<sup>-/-</sup> ( $n = 3$ ) limb buds.

notype, which would explain why embryonic lethality occurs in *DdrGk1*<sup>-/-</sup> mice and not in Shohat-type SEMD patients.

To evaluate the consequences of *DdrGk1* loss during chondrogenesis, we assessed chondrogenic mesenchymal condensation from *DdrGk1*<sup>-/-</sup> limb buds at E11.5 and E12.5. We observed proper patterning of digit formation in WT limb buds at E11.5 and E12.5 by H&E staining (Figure 3, A and B). However, condensation of mesenchymal cells did not occur in *DdrGk1*<sup>-/-</sup> limb buds up to E12.5, which suggests that *DdrGk1* deletion causes a delay or absence of the early stages of chondrogenesis (Figure 3, A and B). These results are consistent with those obtained from ex vivo chondrogenic differentiation assay. After 7 days, E11.5 *DdrGk1*<sup>-/-</sup> mesenchymal cells generated fewer Alcian blue–positive cartilaginous nodules than E11.5 WT cells (Figure 3C). Additionally, deletion of *DdrGk1* increased apoptosis and cell death, trending toward significance, in E11.5 limb buds (Figure 3D). Taken together, the phenotypes of *ddrgk1* knockdown zebrafish and *DdrGk1* null mouse indicate that *DdrGk1* is required for chondrocyte differentiation from mesenchymal cells, and furthermore, they suggest that loss of *DDRKG1* reduces the chondrogenic potency of mesenchymal cells, causing the cartilage phenotype seen in Shohat-type SEMD.

*DDRKG1 regulates SOX9 protein stability.* We observed that *DdrGk1* deficiency partially phenocopies the skeletal phenotype of *Sox9* deficiency (21–23). Similar to *ddrgk1* morphants, *sox9a*-deficient zebrafish embryos lack Meckel's cartilage, ceratohyal cartilage, ceratobranchial cartilage, and neurocranial cartilage at 96 h.p.f. (21, 22). Also, there is an absence of mesenchymal condensation in the limb buds of conditional *Sox9* mice deleted for *Sox9* in their limb buds (*Sox9*<sup>fl/fl</sup> *Prx1-Cre*), which is comparable to the *DdrGk1*<sup>-/-</sup> limb bud phenotype (23). These phenotypic similarities led us to test the epistasis of *DDRKG1* and *SOX9*. Initially to address this question, we knocked down *DdrGk1* in undifferentiated and differentiated ATDC5 chondrogenic cells using siRNAs. Knockdown of *DdrGk1* did not alter the mRNA expression of *Sox9*, but did decrease *SOX9* protein levels in ATDC5 cells after 7 days of differentiation induced by insulin, transferrin, and selenium (ITS) treatment (Figure 4, A and B). *DdrGk1* knockdown in differentiated ATDC5 cells also reduced mRNA expression of *Col2a1* (Figure 4A). We found similar alterations in *ddrgk1* morphants



**Figure 5. Expression of *sox9a* mRNA rescues the *ddrgk1* knockdown cartilage phenotype in zebrafish.** (A) Ventral view at 120 h.p.f. of Alcian blue–stained embryos injected with either control MO or *ddrgk1* MO with or without *sox9a* mRNA. Scale bars: 100  $\mu$ M. (B) Quantification of the craniofacial phenotype in the embryos. The categories of craniofacial features are described in Figure 2. Control MO,  $n = 36$ ; 5 pg *ddrgk1* MO,  $n = 42$ ; 5 pg *ddrgk1* MO + 50 pg *ddrgk1* mRNA,  $n = 31$ ; 5 pg *ddrgk1* MO + 150 pg *ddrgk1* mRNA,  $n = 41$ . \* $P < 0.05$ ; \*\*\* $P < 0.001$ , Kruskal–Wallis rank-sum test followed by Wilcoxon’s rank-sum test with continuity correction.

and *DdrGk1*<sup>-/-</sup> mice. At 72 h.p.f., *ddrgk1* morphants had decreased transcript levels of *col2a1-1a* and *col2a1-1b*, but not *sox9a* or *sox9b*, compared with control morphants (Figure 4C). Also, at E11.5, *DdrGk1*<sup>-/-</sup> mice had decreased protein expression of *Sox9* and reduced *Col2a1* mRNA levels in their limb buds (Figure 4, D and E). Overall, these results demonstrate that SOX9 is a downstream target of DDRGK1.

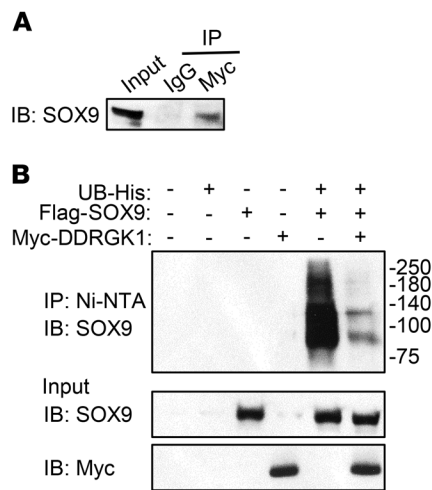
To further validate *sox9* as a downstream target of *ddrgk1* in zebrafish, we performed rescue experiments overexpressing *sox9a* in *ddrgk1* zebrafish morphants. Overexpressing *sox9a* mRNA caused 60% lethality in zebrafish embryos by 120 d.p.f. (data not shown), which is consistent with the 80% postnatal lethality in *Col2a1*<sup>Sox9/+</sup> mice overexpressing *Sox9* in the chondrocytes (24). When we coinjected *ddrgk1* MO with *sox9a* mRNA into zebrafish embryos, it rescued the *ddrgk1* craniofacial defects in a dosage-dependent manner (Figure 5, A and B). Only 43% of *ddrgk1* morphants had normal craniofacial features; however, as we increased *sox9a* mRNA in *ddrgk1* morphants from 50 pg to 150 pg, the proportion of *ddrgk1* morphants with normal craniofacial structures increased from 48% to 75% (Figure 5B). The rescue of

the *ddrgk1* cartilage phenotype by *sox9a* overexpression confirms *sox9* as a downstream target of *ddrgk1*. These results suggest that in Shohat-type SEMD patients, the c.408+1G>A *DDRKG1* loss-of-function mutation exerts its effects by decreasing SOX9 in the skeleton.

*DDRKG1* directly interacts with SOX9 to inhibit SOX9 ubiquitination. It has been reported that, mechanistically, DDRGK1 interacts with its downstream targets such as I $\kappa$ B and ASC1 to regulate posttranslational modification and protein stability (9, 10). With this in mind, we investigated whether DDRGK1 and SOX9 directly interacted in a coimmunoprecipitation assay by expressing Myc-tagged DDRGK1 and FLAG-tagged SOX9 in HEK293T cells. We found that SOX9 forms a complex with DDRGK1 (Figure 6A). After detecting a protein-protein interaction between SOX9 and DDRGK1, we assessed whether DDRGK1 regulates SOX9 stability by modulating its posttranslational modification, such as ubiquitination. As previously shown, SOX9 polyubiquitination can only be detected in vitro when proteasome inhibitors are added, thus demonstrating that SOX9 undergoes ubiquitin-dependent proteasomal degradation (25, 26). We confirmed SOX9 polyubiquitination by overexpressing *Sox9* and *Ub* in HEK293T cells and treating the cells with the proteasome inhibitor MG132 for 6 hours (Figure 6B). Interestingly, the levels of ubiquitinated SOX9 decreased when *Sox9* and *Ub* were coexpressed with *DdrGk1* in HEK293T cells (Figure 6B). This in vitro assay demonstrated that DDRGK1 forms a complex with SOX9 to regulate SOX9 ubiquitin-dependent proteasomal degradation during cartilage development. We then evaluated whether DDRGK1 can regulate the translation of SOX9 by assaying for DDRGK1 effects in the presence of the protein synthesis inhibitor cycloheximide. We coexpressed *Sox9* and *Ub* with or without *DdrGk1* in HEK293T and then treated the cells 24 hours later with cycloheximide for 6 hours. Even when translation was halted by cycloheximide, overexpression of *DdrGk1* increased *Sox9* protein expression, which indicates that inhibiting translation does not diminish the effects of DDRGK1 on SOX9 levels (Supplemental Figure 3). These results suggest that DDRGK1 regulates SOX9 primarily at the posttranslational level, but not at the translational level. Mechanistically, we have demonstrated that DDRGK1 is a critical upstream regulatory factor of SOX9 ubiquitination during the mesenchymal condensation stage of chondrocyte differentiation. Furthermore, the consequence of *DDRKG1* absence illustrates the importance of its in vivo role in cartilage development seen in Shohat-type SEMD.

## Discussion

In this study, we identified a homozygous c.408+1G>A donor splice site mutation in *DDRKG1* as a genetic cause of Shohat-type SEMD. Specifically, this mutation causes aberrant splicing and a loss of DDRGK1 in patient LCLs. Similarly to what is observed in humans, we demonstrated that *DdrGk1* deficiency disrupts chondrogenesis and cartilage formation in mice and zebrafish; however, unlike in Shohat-type SEMD patients, loss of *DdrGk1* in mice is embryonic lethal. Though previous studies have shown that *DdrGk1* deficiency causes defective erythropoiesis in mice (13),



**Figure 6. DDRGK1 forms a complex with SOX9 and inhibits SOX9 ubiquitination.** (A) SOX9 forms a complex with DDRGK1. 293T cells were transiently transfected with plasmids expressing Myc-tagged *DdrGk1* and FLAG-tagged *Sox9*. After 48 hours, SOX9 was detected by immunoblotting with a FLAG-specific antibody after immunoprecipitation of cell lysates with anti-Myc or IgG antibody. As a control, the input was immunoblotted with the FLAG-specific antibody. The immunoblot is representative of 3 independent experiments. (B) *DdrGk1* overexpression decreases SOX9 ubiquitination in 293T cells. 293T cells were transiently transfected with plasmids expressing His-tagged UB, FLAG-tagged SOX9, and Myc-tagged DDRGK1. Twenty-four hours later, the cells were treated with 20  $\mu$ M of proteasome inhibitor MG132 for 6 hours. Afterwards, we pulled down His-tagged ubiquitinated proteins using Ni-NTA beads, and ubiquitinated SOX9 was probed using anti-SOX9 antibody. As controls, the input was immunoblotted with anti-SOX9 and anti-Myc antibodies. The immunoblots are representative of 3 independent experiments.

we and others have not observed this phenotype in patients with Shohat-type SEMD. At the same time, a GWAS identified a link between *DDRKG1* variants and thrombocytopenia in hepatitis C patients treated with pegylated interferon and ribavirin (27). Taken together, these data suggest that, unlike in mice, mutations or variants in *DDRKG1* affect erythrocyte differentiation in humans only when secondary to other pathologies or therapeutic interventions, perhaps due to physiological functional redundancy in humans. In the future, it would be interesting to identify these redundant pathways and to assess whether they also have a role in chondrogenesis during cartilage development.

During development, there are numerous master regulators that orchestrate and control central tissue-specific developmental pathways. To list a few, RUNX2, MYOD, and TAL1 are master transcription factors that regulate the differentiation of osteoblast, skeletal muscle, and erythrocytes, respectively (28–30). On the other hand, SOX9 is a unique master transcription factor because of its essential role in regulating multiple developmental pathways, including chondrogenesis, gonadogenesis, gliogenesis, epithelial hair follicle stem cell specification, normal development of cardiac valve, septum, lung, pancreas, etc. (21, 23, 31–33). Dysregulation of SOX9 contributes to the development of different malignant cancers and causes developmental disorders (31, 34–36). For example, haploinsufficiency for *Sox9* causes campomelic dysplasia (CMD) (31, 37–39), a rare neonatal chondrodysplasia

characterized by bowing and angulation of long bones and many other skeletal and extraskelatal features (31). The few CMD survivors have disproportionate short stature, progressive kyphoscoliosis, and hip dislocation, among other findings (39), thus sharing phenotypic overlap with Shohat-type SEMD patients.

In both mice and zebrafish, SOX9 deficiency impairs chondrogenesis (21–23). *sox9a* knockout zebrafish show malformed Meckel’s cartilage and ceratohyal cartilage and lack neurocranial cartilage and ceratobranchial cartilage (21, 22), whereas loss of *Sox9* in mouse limb buds prevents chondrogenic mesenchymal condensation (23). Interestingly, many of the phenotypic features of the SOX9-deficient animal models were also observed in our DDRGK1-deficient animal models. For this reason, we assessed changes in expression of SOX9 and its downstream target gene, *Col2a1*. Using CRISPR/CAS9-generated *DdrGk1*<sup>-/-</sup> mice and differentiated ATDC5 cells, we found that *DdrGk1* deficiency decreases *Sox9* protein levels and the expression of its target gene, *Col2a1*. We then rescued the craniofacial phenotype in *drrgk1* knockdown zebrafish by overexpressing *sox9a* to confirm that Sox9 is an important epistatic downstream target of *DdrGk1*. Though the reduction in *Sox9* protein levels is less than 50% in *DdrGk1*<sup>-/-</sup> mice, these mice have a more severe skeletal phenotype than *Sox9*<sup>+/-</sup> mice haploinsufficient for *Sox9* (38). One possible explanation for the more severe phenotype in *DdrGk1*<sup>-/-</sup> mice may be that DDRGK1 regulates multiple targets involved in chondrogenesis in addition to SOX9. Another interesting finding that requires further investigation is that knockdown of *DdrGk1* decreases SOX9 in differentiated ATDC5 cells, but not in undifferentiated ATDC5 cells. These results suggest that the control of SOX9 protein stability by DDRGK1 is temporally regulated. The function of this potential temporal regulation, the factors that govern this regulation, and how they are regulated are interesting subjects for future studies.

The clinical overlap among CMD, the SED spectrum of disorders, and Shohat-type SEMD supports that their pathogenesis is caused by mutations in the same pathway. The SED spectrum phenotypes are caused by mutations altering the structure and trafficking of COL2A1, whereas CMD and Shohat-type SEMD are both caused by mutations affecting SOX9 in its regulation of COL2A1. Our study emphasizes the importance of studying phenocopies of disease because of the potential to reveal novel components of a developmental pathway. Investigating Shohat-type SEMD thus identified *DDRKG1* as an indirect regulator of COL2A1 expression through its ability to inhibit SOX9 ubiquitin-dependent proteasomal degradation.

In the present study, we show that DDRGK1 interacts in a complex with SOX9 to regulate its ubiquitination; however, the underlying mechanism mediating this inhibition remains unknown. DDRGK1 is known to be required for ufmylation, a ubiquitin-like posttranslational modification that covalently binds ubiquitin-like fold modifier 1 (UFM1) to substrates (10, 12, 40, 41). DDRGK1 forms a complex with UFM1 substrates and UFM1-specific ligase 1 (UFL1), an UFM1 E3 ligase, and *DdrGk1* knockdown prevents ASC1 ufmylation (10, 12). Therefore, based on these studies and our findings, it is possible that SOX9 may be ufmylated, a process for which DDRGK1 is required; SOX9 ufmylation in turn may prevent its ubiquitination and proteasomal degradation. Alternatively, another potential mechanism for DDRGK1 inhi-

bition of SOX9 ubiquitination may be independent of its role in ufmylation. DDRGK1 has a proteasome, COP9, initiation factor 3 (PCI) domain (ref. 42 and Figure 1F), which can also be found in large multisubunit protein complexes, including the proteasome, COP9 signalosome, and eukaryotic translation initiation factor 3 (43–45). The PCI domain facilitates protein-protein interactions, and it is thought to facilitate interactions in complexes containing this domain (43–45). Therefore, DDRGK1 may interact with the proteasome complex to directly mediate SOX9 ubiquitin-dependent proteasomal degradation.

In conclusion, our results demonstrate that the homozygous c.408+1G>A loss-of-function mutation in *DDRGK1* causes Shohat-type SEMD by loss of DDRGK1 inhibition of SOX9 ubiquitin-dependent proteasomal degradation, thus impairing chondrogenesis. By using a rapid multimodel system (a combination of morpholino-knockdown zebrafish, CRISPR/Cas9-generated mouse genetic models, and in vitro assays) to study the pathogenicity of a rare genetic variant, we identified the genetic cause of Shohat-type SEMD. Previous studies of DDRGK1 investigated its cellular and in vivo functions in mice, but our study addressed, for what we believe is the first time, its physiological role in the context of a human disease and skeletogenesis. Furthermore, this work reveals a mechanism regulating the developmental pathway of chondrogenesis.

## Methods

**WES.** Total genomic DNA was extracted from whole blood from 3 affected individuals. WES was performed on 3 affected individuals from families 1 and 2 and the data analyzed, as previously described (14). Afterwards, conventional Sanger sequencing was performed on all living patients to confirm the *DDRGK1* variant identified in the WES analysis, as previously described (14).

**Cell culture, transfection, and treatment.** LCLs were extracted from the proband and a control who did not have Sutcliffe type of spondylometaphyseal dysplasia. LCLs were grown at 37°C in  $\alpha$ MEM (HyClone) plus 10% FBS and with 100 units/ml of penicillin and 1  $\mu$ g/ml of streptomycin. HEK293T cells (ATCC) were grown at 37°C in DMEM (HyClone) supplemented with 100 units/ml of penicillin, 1  $\mu$ g/ml of streptomycin, and 10% FBS. 293T cells were transiently transfected with expression plasmids for 48 hours, using Lipofectamine 2000 (Invitrogen) according to the manufacturer's protocol. ATDC5 cells (ATCC) were grown at 37°C in DMEM/F12 (HyClone) supplemented with 100 units/ml of penicillin, 1  $\mu$ g/ml of streptomycin, and 5% FBS. For the in vitro knockdown experiments, ATDC5 cells were transiently transfected with either 50 nM siGENOME mouse *DdrGk1* siRNA or 50 nM siGENOME Non-Targeting siRNA Pool #1 (Dharmacon) using Lipofectamine 2000 (Invitrogen). To differentiate ATDC5 cells, cells were treated 24 hours after siRNA treatment with 1 $\times$  ITS Liquid Media Supplement (100 $\times$ , Sigma-Aldrich) for 7 days. For the ubiquitination assays, 293T cells were treated with 20  $\mu$ M of proteasome inhibitor MG132 6 hours before harvesting. To inhibit translation, 293T cells were treated with 10  $\mu$ g/ml of protein synthesis inhibitor cycloheximide for 6 hours before harvesting.

**Antibodies.** The rabbit anti-DDRGK1 antibody was a gift from Frans Shuit (12). Anti-SOX9 antibody (catalog AB5535), anti-c-Myc antibody (catalog sc-40), anti-FLAG antibody (catalog F1804), anti-BrdU antibody (catalog Ab1893), and normal rabbit IgG (catalog 2729) were purchased from Millipore, Santa Cruz Biotechnology Inc., Sigma-Aldrich,

Abcam, and Cell Signaling Technology, respectively. The anti-SOX9 antibody (AB5535) and anti-BrdU antibody (AB1893) were purchased from Abcam. The secondary antibodies used were goat anti-mouse IgG-HRP (H+L) conjugate (catalog 1721011, Bio-Rad), goat anti-mouse antibody (catalog 926-68070, Licor), goat anti-rabbit antibody (catalog 926-32211, LiCor), donkey anti-sheep antibody Alexa Fluor 594 (catalog Ab150180, Abcam), and anti-rabbit IgG, HRP-linked whole antibody (catalog NA934, GE Healthcare Life Sciences).

**Expression plasmids.** We previously generated the pcDNA3.1-FLAG-SOX9 plasmid (46); the pCMV\_Myc-DDRGK1 and His<sub>6</sub>-UB plasmids were gifts from Honglin Li (11) and Dae-Sik Lim (47), respectively. The *ddrgk1* and *sox9a* cDNAs were amplified from zebrafish cDNA using the primers listed in Supplemental Table 2 and then cloned into the pCS2<sup>+</sup> vector by In-Fusion Cloning (Clontech). Afterwards, to prevent *ddrgk1* MO targeting of exogenous *ddrgk1* mRNA, 5 nucleotide sequences of *ddrgk1* pCS2<sup>+</sup> vector were mutated by QuikChange (Agilent Technologies) site-directed mutagenesis without altering the protein sequence (Supplemental Table 2).

**Microinjection and Alcian blue staining of zebrafish embryos.** From 3 to 5 pg *ddrgk1* translational MO or *ddrgk1* control MO (Gene Tools) was injected into embryos at the 1-cell stage. For rescue experiments, mutated *ddrgk1* mRNA and *sox9a* mRNA were transcribed from the pCS2<sup>+</sup> vectors using the mMessage mMachine SP6 kit (Ambion). Amounts ranging from 25 to 150 pg were used for the injections (Supplemental Table 2). At 120 h.p.f., embryos were fixed in 2% PFA and then stained in 0.1% Alcian blue solution at 4°C for 24 hours. After 24 hours, the embryos were bleached in 3% H<sub>2</sub>O<sub>2</sub> and 0.5% KOH.

**CRISPR/Cas9 generation of *DdrGk1*<sup>-/-</sup> mice.** *DdrGk1* sgRNA (Supplemental Table 2) was designed using the online CRISPR Design Tool and cloned into the hSpCas9 vector as previously described (48). After cloning, the sgRNA template was generated by PCR amplification, which simultaneously added a T7 promoter in front of the *DdrGk1* sgRNA sequence (Supplemental Table 2). RNA was transcribed from the template using the MEGashortscript T7 Transcription Kit (Ambion) and cleaned up with the MEGAclear Transcription Clean-Up Kit (Ambion). 17 ng/ $\mu$ l *DdrGk1* sgRNA and 50 ng/ $\mu$ l Cas9 mRNA were coinjected into C57/B6J mouse embryos (Jackson Laboratory). The founder mice from these injections were screened for mutations in the *DdrGk1* gene (Supplemental Table 2), and the desired line was backcrossed 5 generations.

**Histology of mouse limb buds.** E11.5 and E12.5 limb buds were collected and fixed in 4% PFA at 4°C for 24 hours. The limb buds were then embedded in paraffin and sectioned 7- $\mu$ m thick. To examine morphology, sections were stained with H&E (Sigma-Aldrich). To assess apoptosis, sections were stained with the ApopTag Fluorescein In Situ Apoptosis Detection Kit (Milipore) according to the manufacturer's protocol.

**Coimmunoprecipitation.** 293T cells were transiently transfected with 3  $\mu$ g FLAG-Sox9 vector and 3  $\mu$ g Myc-DdrGk1. After 48 hours, the cells were lysed in lysis buffer (50 mM Tris HCl, pH 8, 150 mM NaCl, 0.1% NP-40, 1 mM EDTA, 2 mM N-ethylmaleimide and proteinase inhibitor cocktail; GenDEPOT), vortexed, and then incubated on ice for 20 minutes. After centrifugation at 13,000 g for 20 minutes at 4°C, the supernatant was precleared by adding protein G agarose (Roche) and rotating at 4°C for 20 minutes. The supernatant was then incubated with anti-MYC antibody (Sigma-Aldrich) or normal IgG (Santa Cruz Biotechnology Inc.) and bound to protein G beads (Roche). After washing the immunoprecipitated samples 3 times with lysis buffer,



proteins were separated by SDS-PAGE, and SOX9 was detected with anti-FLAG antibody.

**Ubiquitination assay.** 293T cells were transiently transfected with 2  $\mu$ g FLAG-Sox9 vector, His-Ub vector, and 4  $\mu$ g Myc-DdrGk1 plasmid. After 48 hours, the His-tagged ubiquitinated proteins were pulled down with Ni-NTA agarose beads (QIAGEN) as previously described (49). Following Ni-NTA pulldown, proteins were separated by SDS-PAGE and SOX9 was probed with anti-SOX9 antibody.

**qRT-PCR.** Total RNA was extracted from tissues and cells using TRIzol reagent (Invitrogen) and cDNA was synthesized from total RNA using the SuperScript III First Strand RT-PCR kit (Invitrogen). The qRT-PCR was performed on a LightCycler instrument (Roche).

**Statistics.** All the data are shown as mean  $\pm$  SEM. Statistical analyses used were a type 2-tailed Student's *t* test, 2-way ANOVA followed by a Tukey's post-hoc test, and Kruskal-Wallis rank-sum test followed by Wilcoxon's rank-sum test with continuity correction. *P* < 0.05 was considered significant.

**Study approval.** Prior to their participation in this study, the families provided written, informed consent to participate in the study approved by the IRB at Rabin Medical Center, Petah Tikva, Israel. The families underwent physical examinations, and we obtained radiographs of the patients. WT adult zebrafish strain (AB) and *DdrGk1*<sup>+/-</sup> mice were both maintained under standard laboratory conditions. Zebrafish embryos were obtained after natural crosses between males and females, and mouse embryos were obtained by timed mating. All animal studies were performed under protocols reviewed and approved by IACUCs at the University of Texas Medical School at Houston or Baylor College of Medicine.

## Author contributions

NM, ARR, and MS were involved in patient care, patient diagnoses, and human data collection. ATE, YB, ECS, PMC, and BHL designed the research studies. JTL, RAG, and PMC conducted the bioinformatics analyses. SC performed the statistical analyses. ATE, YB, MMJ, DSL, YCE, TB, LN, and PMC conducted experiments and acquired data. ATE, YB, ECS, DHC, PMC, and BHL analyzed data. ECS, DHC, and BHL provided the reagents. ATE wrote the manuscript, and YB, TB, ECS, DHC, PMC, MS, and BHL edited the manuscript.

## Acknowledgments

This work was supported by the Baylor College of Medicine Intellectual and Developmental Disabilities Research Center (HD024064) from the Eunice Kennedy Shriver National Institute of Child Health and Human Development, the Baylor College of Medicine Advanced Technology Cores with funding from the NIH (AI036211, CA125123, and RR024574), the Rolanette and Berdon Lawrence Bone Disease Program of Texas, and the Baylor College of Medicine Center for Skeletal Medicine and Biology. It was also supported by NIH grant R01AR062651 and the Adler chair for Pediatric Cardiology, Tel Aviv University.

Address correspondence to: Yangjin Bae or Brendan H. Lee, Baylor College of Medicine, One Baylor Plaza, R830, Houston, Texas 77030, USA. Phone: 713.798.3548; E-mail: bae@bcm.edu (Y. Bae), blee@bcm.edu (B.H. Lee).

- Spranger J, Winterpacht A, Zabel B. The type II collagenopathies: a spectrum of chondrodysplasias. *Eur J Pediatr.* 1994;153(2):56–65.
- Kuivaniemi H, Tromp G, Prockop DJ. Mutations in fibrillar collagens (types I, II, III, and XI), fibril-associated collagen (type IX), and network-forming collagen (type X) cause a spectrum of diseases of bone, cartilage, and blood vessels. *Hum Mutat.* 1997;9(4):300–315.
- Wirth T. [Spondyloepiphyseal and metaphyseal dysplasia]. *Der Orthopäde.* 2008;37(1):8–16.
- Cormier-Daire V. Spondylo-epi-metaphyseal dysplasia. *Best Pract Res Clin Rheumatol.* 2008;22(1):33–44.
- Figuera LE, Ramirez-Dueñas ML, Gallegos-Arreola MP, Cantú JM. Spondyloepimetaphyseal dysplasia (SEMD) Shohat type. *Am J Med Genet.* 1994;51(3):213–215.
- Shohat M, Lachman R, Carmi R, Bar Ziv J, Rimoin D. New form of spondyloepimetaphyseal dysplasia (SEMD) in Jewish family of Iraqi origin. *Am J Med Genet.* 1993;46(4):358–362.
- Venditti R, et al. Sedlin controls the ER export of procollagen by regulating the Sar1 cycle. *Science.* 2012;337(6102):1668–1672.
- Lee B, Vissing H, Ramirez F, Rogers D, Rimoin D. Identification of the molecular defect in a family with spondyloepiphyseal dysplasia. *Science.* 1989;244(4907):978–80.
- Xi P, Ding D, Zhou J, Wang M, Cong YS. DDRGK1 regulates NF- $\kappa$ B activity by modulating I $\kappa$ B $\alpha$  stability. *PLoS One.* 2013;8(5):e64231.
- Yoo HM, et al. Modification of ASC1 by UFM1 is crucial for ER $\alpha$  transactivation and breast cancer development. *Mol Cell.* 2014;56(2):261–274.
- Wu J, Lei G, Mei M, Tang Y, Li H. A novel C53/LZAP-interacting protein regulates stability of C53/LZAP and DDRGK domain-containing Protein 1 (DDRGK1) and modulates NF- $\kappa$ B signaling. *J Biol Chem.* 2010;285(20):15126–15136.
- Lemaire K, et al. Ubiquitin fold modifier 1 (UFM1) and its target UFBP1 protect pancreatic  $\beta$  cells from ER stress-induced apoptosis. *PLoS One.* 2011;6(4):e18517.
- Cai Y, et al. UFBP1, a key component of the Ufm1 conjugation system, is essential for ufmylation-mediated regulation of erythroid development. *PLoS Genet.* 2015;11(11):e1005643.
- Campeau PM, et al. Whole-exome sequencing identifies mutations in the nucleoside transporter gene SLC29A3 in dysosteosclerosis, a form of osteopetrosis. *Hum Mol Genet.* 2012;21(22):4904–4909.
- Lopez IA, et al. Slc4a11 gene disruption in mice: cellular targets of sensorineuronal abnormalities. *J Biol Chem.* 2009;284(39):26882–26896.
- Vithana EN, et al. Mutations in sodium-borate cotransporter SLC4A11 cause recessive congenital hereditary endothelial dystrophy (CHED2). *Nat Genet.* 2006;38(7):755–757.
- Thisse B, Thisse C. Fast release clones: a high throughput expression analysis. ZFIN direct data submiss. ZFIN web site. <https://zfin.org/ZDB-PUB-040907-1>. Accessed February 3, 2017.
- Javidan Y, Schilling TF. Development of cartilage and bone. *Methods Cell Biol.* 2004;76:415–436.
- Kimmel CB, et al. The shaping of pharyngeal cartilages during early development of the zebrafish. *Dev Biol.* 1998;203(2):245–263.
- Schilling TF, Kimmel CB. Musculoskeletal patterning in the pharyngeal segments of the zebrafish embryo. *Development.* 1997;124(15):2945–2960.
- Yan YL, et al. A zebrafish *sox9* gene required for cartilage morphogenesis. *Development.* 2002;129(21):5065–5079.
- Yan YL, et al. A pair of Sox: distinct and overlapping functions of zebrafish *sox9* co-orthologs in craniofacial and pectoral fin development. *Development.* 2005;132(5):1069–1083.
- Akiyama H, Chaboissier MC, Martin JF, Schedl A, de Crombrughe B. The transcription factor Sox9 has essential roles in successive steps of the chondrocyte differentiation pathway and is required for expression of Sox5 and Sox6. *Genes Dev.* 2002;16(21):2813–2828.
- Akiyama H, et al. Interactions between Sox9 and beta-catenin control chondrocyte differentiation. *Genes Dev.* 2004;18(9):1072–1087.
- Akiyama H, et al. The transcription factor Sox9 is degraded by the ubiquitin-proteasome system and stabilized by a mutation in a ubiquitin-target site. *Matrix Biol.* 2005;23(8):499–505.
- Hattori T, et al. E6-AP/UBE3A protein acts as a ubiquitin ligase toward SOX9 protein. *J Biol Chem.* 2013;288(49):35138–35148.
- Tanaka Y, et al. Genome-wide association study identified ITPA/DDRGK1 variants reflecting thrombocytopenia in pegylated interferon and ribavirin therapy for chronic hepatitis C. *Hum Mol Genet.* 2011;20(17):3507–3516.
- Komori T. Runx2, a multifunctional transcription factor in skeletal development. *J Cell Biochem.*

- 2002;87(1):1-8.
29. Weintraub H, et al. Activation of muscle-specific genes in pigment, nerve, fat, liver, and fibroblast cell lines by forced expression of MyoD. *Proc Natl Acad Sci U S A*. 1989;86(14):5434-5438.
30. Porcher C, Swat W, Rockwell K, Fujiwara Y, Alt FW, Orkin SH. The T cell leukemia oncoprotein SCL/tal-1 is essential for development of all hematopoietic lineages. *Cell*. 1996;86(1):47-57.
31. Jo A, et al. The versatile functions of Sox9 in development, stem cells, and human diseases. *Genes Dis*. 2014;1(2):149-161.
32. Akiyama H, et al. Essential role of Sox9 in the pathway that controls formation of cardiac valves and septa. *Proc Natl Acad Sci U S A*. 2004;101(17):6502-6507.
33. Kang P, et al. Sox9 and NFIA coordinate a transcriptional regulatory cascade during the initiation of gliogenesis. *Neuron*. 2012;74(1):79-94.
34. Wang H, McKnight NC, Zhang T, Lu ML, Balk SP, Yuan X. SOX9 is expressed in normal prostate basal cells and regulates androgen receptor expression in prostate cancer cells. *Cancer Res*. 2007;67(2):528-536.
35. Kopp JL, et al. Identification of Sox9-dependent acinar-to-ductal reprogramming as the principal mechanism for initiation of pancreatic ductal adenocarcinoma. *Cancer Cell*. 2012;22(6):737-750.
36. Kwok C, et al. Mutations in SOX9, the gene responsible for Campomelic dysplasia and autosomal sex reversal. *Am J Hum Genet*. 1995;57(5):1028-1036.
37. Bi W, Deng JM, Zhang Z, Behringer RR, de Crombrughe B. Sox9 is required for cartilage formation. *Nat Genet*. 1999;22(1):85-89.
38. Bi W, et al. Haploinsufficiency of Sox9 results in defective cartilage primordia and premature skeletal mineralization. *Proc Natl Acad Sci U S A*. 2001;98(12):6698-6703.
39. Mansour S, Offiah AC, McDowall S, Sim P, Tolmie J, Hall C. The phenotype of survivors of campomelic dysplasia. *J Med Genet*. 2002;39(8):597-602.
40. Tatsumi K, et al. A novel type of E3 ligase for the Ufm1 conjugation system. *J Biol Chem*. 2010;285(8):5417-5427.
41. Komatsu M, et al. A novel protein-conjugating system for Ufm1, a ubiquitin-fold modifier. *EMBO J*. 2004;23(9):1977-1986.
42. Neziri D, et al. Cloning and molecular characterization of Dashurin encoded by C20orf116, a PCI-domain containing protein. *Biochim Biophys Acta*. 2010;1800(4):430-438.
43. Ellisdon AM, Stewart M. Structural biology of the PCI-protein fold. *Bioarchitecture*. 2012;2(4):118-123.
44. Dessau M, Halimi Y, Erez T, Chomsky-Hecht O, Chamovitz DA, Hirsch JA. The Arabidopsis COP9 signalosome subunit 7 is a model PCI domain protein with subdomains involved in COP9 signalosome assembly. *Plant Cell*. 2008;20(10):2815-2834.
45. Hofmann K, Bucher P. The PCI domain: a common theme in three multiprotein complexes. *Trends Biochem Sci*. 1998;23(6):204-205.
46. Zhou G, et al. Dominance of SOX9 function over RUNX2 during skeletogenesis. *Proc Natl Acad Sci U S A*. 2006;103(50):19004-19009.
47. Song MS, Song SJ, Kim SY, Oh HJ, Lim DS. The tumour suppressor RASSF1A promotes MDM2 self-ubiquitination by disrupting the MDM2-DAXX-HAUSP complex. *EMBO J*. 2008;27(13):1863-1874.
48. Ran FA, et al. Genome engineering using the CRISPR-Cas9 system. *Nat Protoc*. 2013;8(11):2281-2308.
49. Mahanic CS, Budhavarapu V, Graves JD, Li G, Lin WC. Regulation of E2 promoter binding factor 1 (E2F1) transcriptional activity through a deubiquitinating enzyme, UCH37. *J Biol Chem*. 2015;290(44):26508-26522.