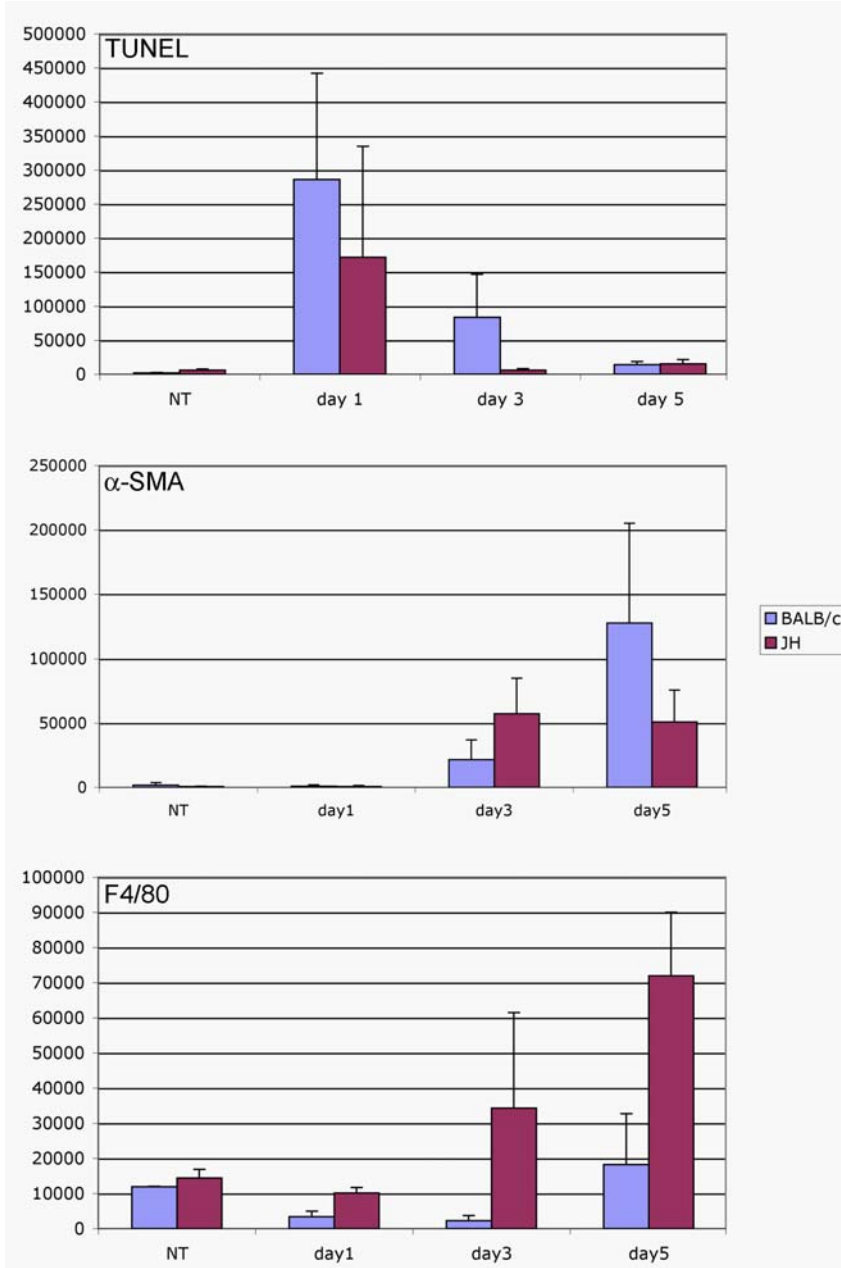


Supplementary Figure 1.



B cell deficient mice have altered kinetics of response to a CCl₄ induced liver injury

Mice of the genotype indicated were gavaged once with 1.75 mg/kg of CCl₄, or with mineral oil. 1, 3 or 5 days after treatment, mice were sacrificed and immunohistochemical analyses of liver sections were performed. Apoptotic cell specific TUNEL, macrophage specific F4/80 and myofibroblast specific anti-SMA stainings (Figure 4 and data not shown) were

quantified using Metamorph program. 3-4 mice per group were used in this experiment. Mean value is shown by the graph, error bars depict standard deviation. Several sections per liver were used for quantification. Results were reproduced in an independent experiment (not shown).